

Ancestry help sheet

How to print images



Solihull
METROPOLITAN
BOROUGH COUNCIL

www.ancestrylibrary.com - accessible from library computers only

To print an image, such as a census page, click on the 'Print' button immediately above the image.

Image about: Edward T Page

Administrative County of Warwickshire

The undermentioned Houses are situate within the Boundaries of the

Page 10

Code	No. of ROAD, STREET, etc. and No. or NAME of HOUSE	HOUSES	NAME and Surname of each Person	RELATION to Head of Family	CON-DITION as to Marriage	AGE last Birthday of	PROFESSION or OCCUPATION	WHERE BORN
	High Street		Mary A. Vason	Widow	S	28	Drapery Assistant	Warwick - Kenil
			John J. Pritchard	Serv	S	17	General Servant	Do - Do
			John H. Hild	Serv	S	17	General Servant	Stapleton - Blakenfield
63	Do	1	Edwin Trinder	Head	M	27	Chemist	Stapleton - Blakenfield
			Betty Do	Wife	M	24		Stapleton - Blakenfield
			Hugh J. Do	Son	S	24	Chemical Assistant	Warwick - Kenil
			Alfred Do	Son	S	24		Do - Do
			James E. Do	Son	S	15	Apprentice to Painter	Do - Do
			John Do	Son	S	17	General Servant	Do - Birmingham
64	Do	1	Harry S. Blackden	Head	M	30	School Teacher	Do - Do
			Edith M. Do	Wife	M	30		Do - Do
			William Do	Son	S	3		Do - Endington
			Ellen Bell	Serv	Mid	30	Cook Domestic Serv	Do - Perry Barr
			Elizabeth Mallett	Serv	S	19	Nurse Do Do	Blakenfield - Blakenfield
			Emma Blackden	Serv	S	14	Kitchen Maid Do Do	Birmingham - Warwick
			Thomas Blackden	Son	S	2		Warwick - Endington
65	Do	1	Edward T. Page	Head	S	27	Resident Medical Practitioner	Do - Solihull
			Marie M. Do	Wife	S	24		Do - Do
			Ann Lewis	Serv	S	28	General Servant	Do - Alcester
			Charles Jackson	Serv	S	16	Page - Domestic Serv	Do - Meriden
66	Do	1	Edna Mayne	Head	Mid	67	Lodging House Keeper	Warwick - Blakenfield
			Winnie Do	Daughter	S	24		Warwick - Birmingham

Images reproduced by courtesy of The National Archives, London, England.

This opens up a 'Print' box. Click on 'Properties'

Print

Printer: ICAM Printer

Name: ICAM Printer

Status: Ready

Type: iCAM Print Management

Where: NUL

Comment:

Print

Entire Image

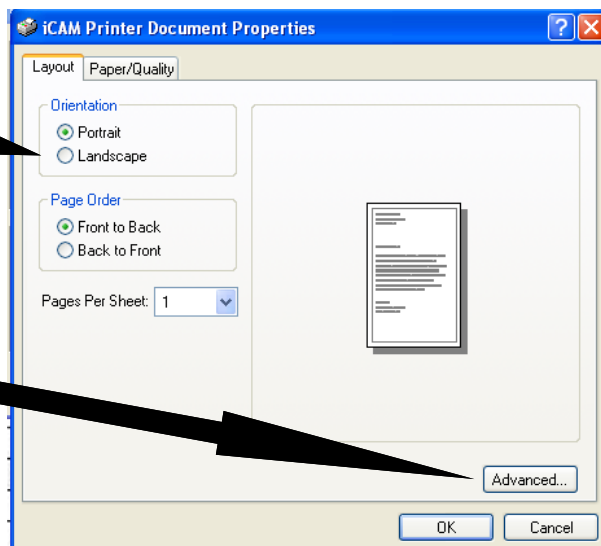
Current View

Copies

Number of copies: 1

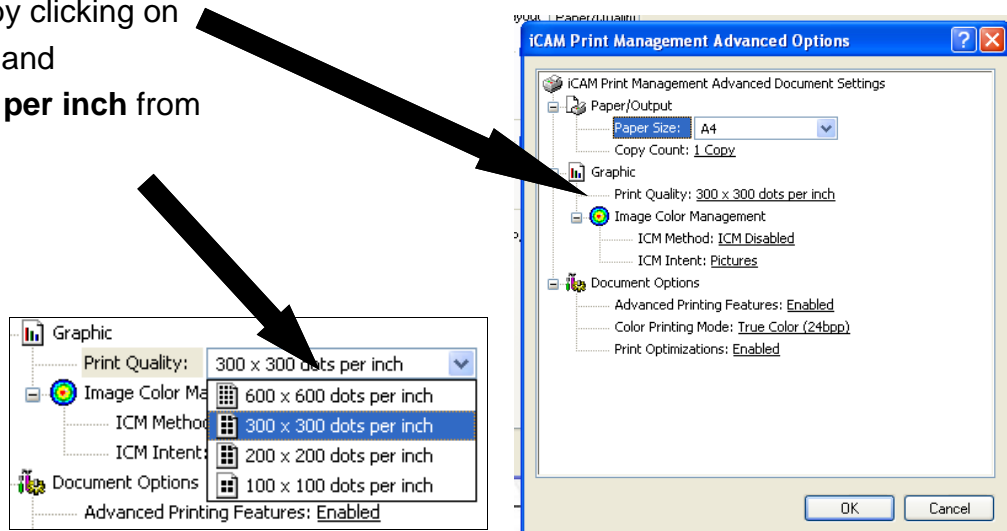
OK Cancel

Click on 'Landscape' to change the paper orientation.

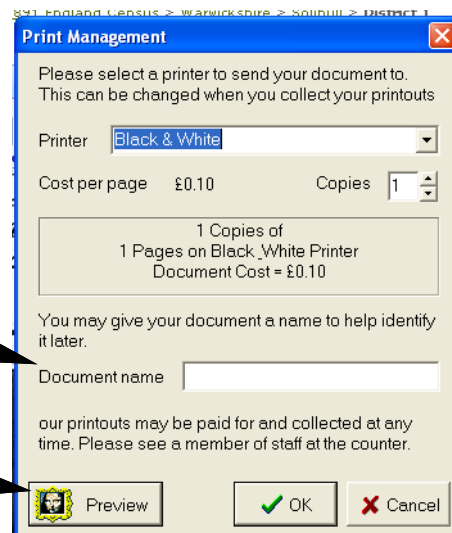


Click on 'Advanced'

Change the print quality by clicking on 300 x 300 dots per inch and selecting 600 x 600 dots per inch from the drop-down menu.



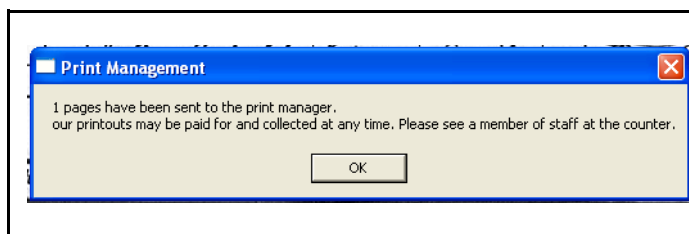
Then click on 'OK' on all the boxes until the Print Management box comes up.



Type in a name for the document.

Click on 'Preview' to make sure the printed document will look as you expect.

Click on 'OK'.



You can collect your prints from the help desk at any time during your session or when you have finished using the PC. Just tell staff the number of the PC.