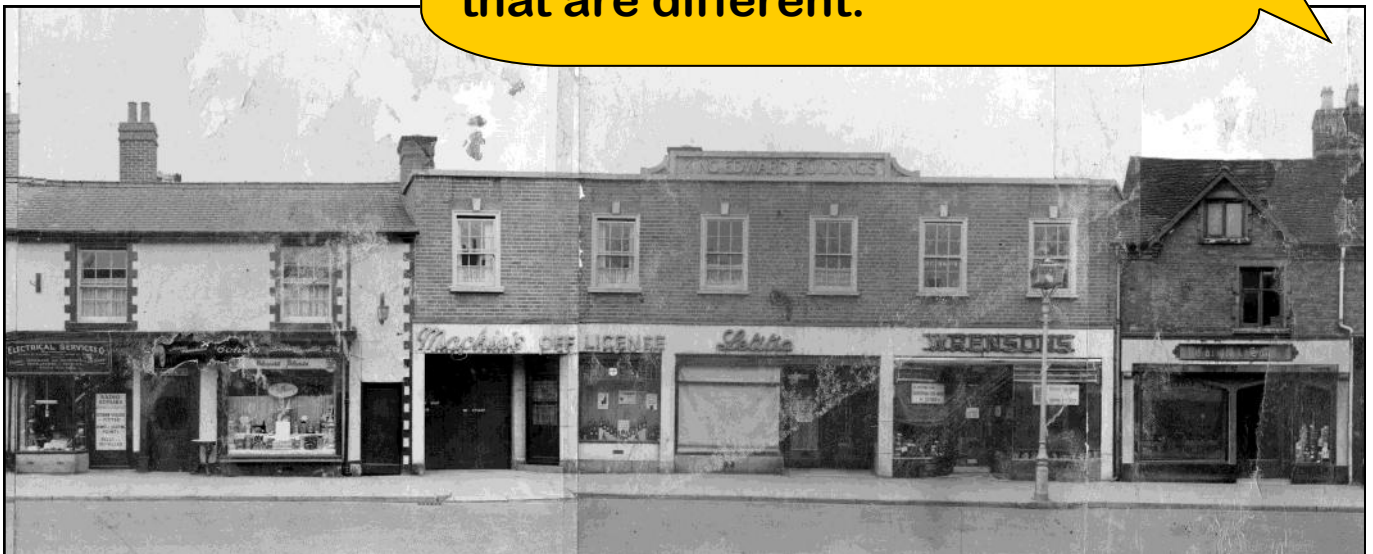


Step 1

Find a photo you can use — this is likely to be an older picture. You may need to scan it first and check the copyright.

It doesn't matter how old your image is, although it works best if there are some features that are the same as now and some that are different.



'Flat' images are easier to work with.

If you use an image that has been taken at an angle, it's much more difficult to get a matching modern picture from exactly the same viewpoint.

Step 2

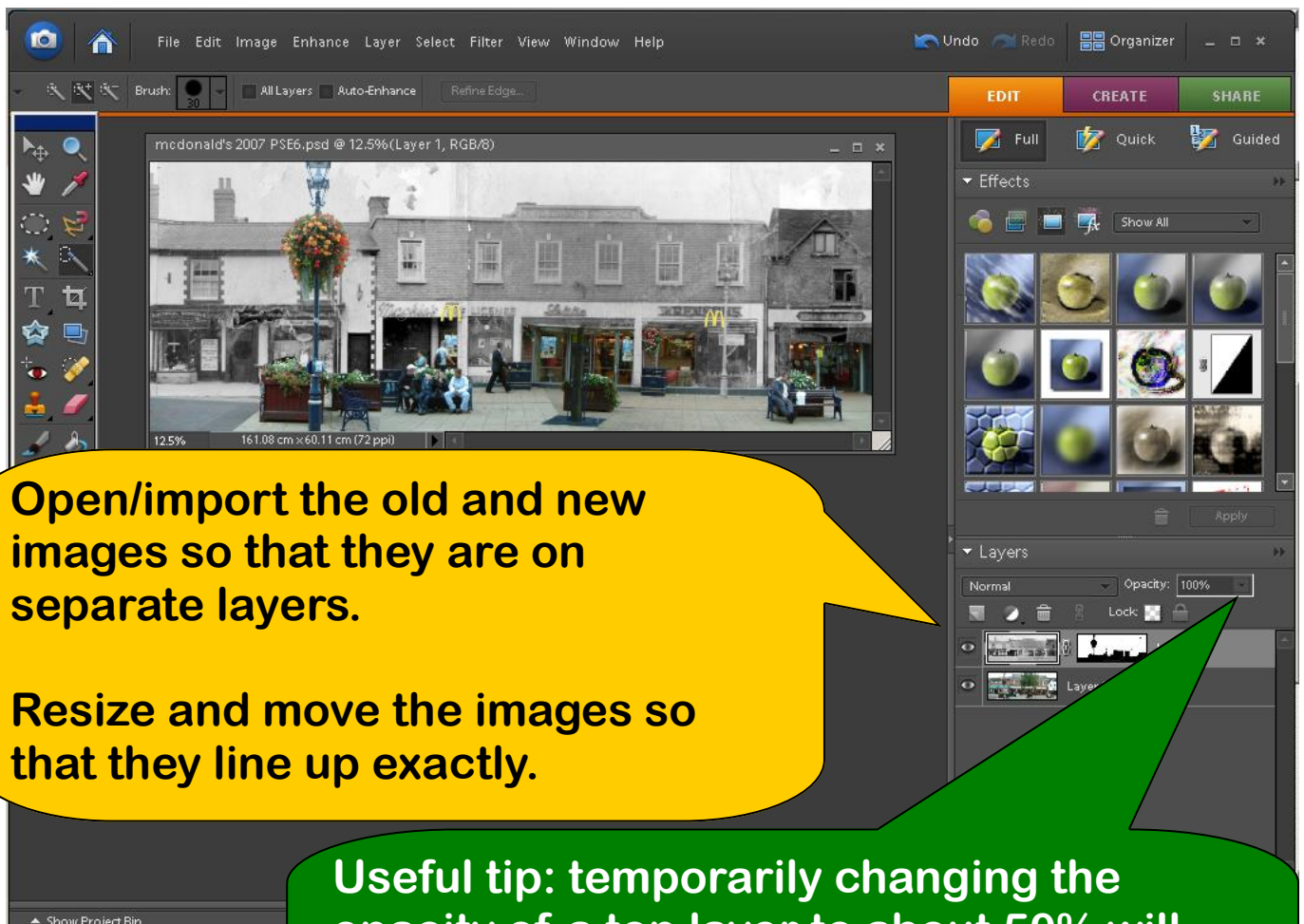
Find a matching image from a different date. You may need to scan a printed picture or take your own new photo(s).



It doesn't matter if you need to take more than one photo. The important thing is that the photos match the angle and perspective of the original as far as possible.

Step 3

Use image-editing computer software that has the ability to have images on separate layers and allows you to use layer masks.



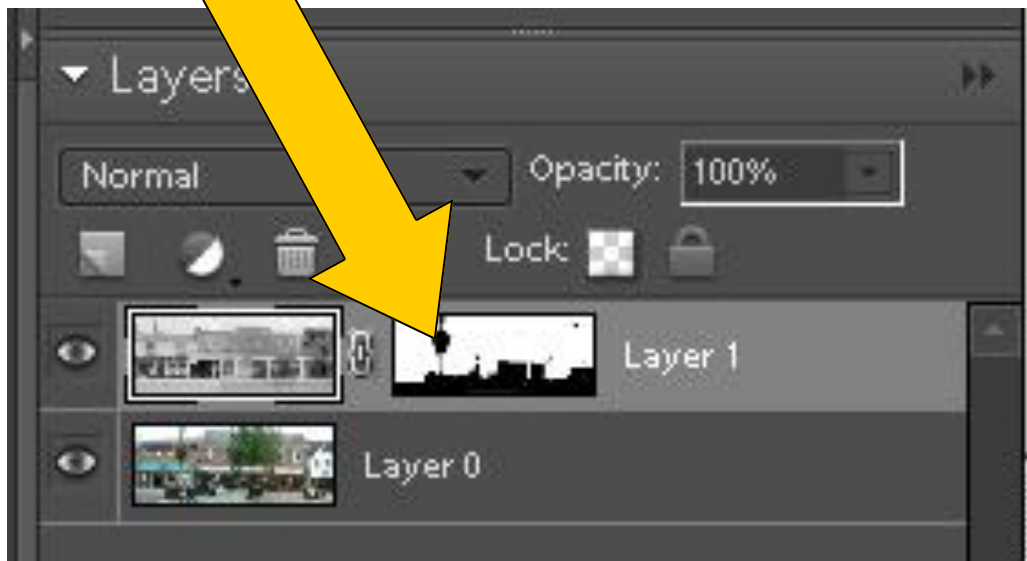
Open/import the old and new images so that they are on separate layers.

Resize and move the images so that they line up exactly.

Useful tip: temporarily changing the opacity of a top layer to about 50% will help you 'see through it' to the layer below. This will help you line up the images precisely.

Step 4

Add a layer mask to the image you want to 'rub out'.



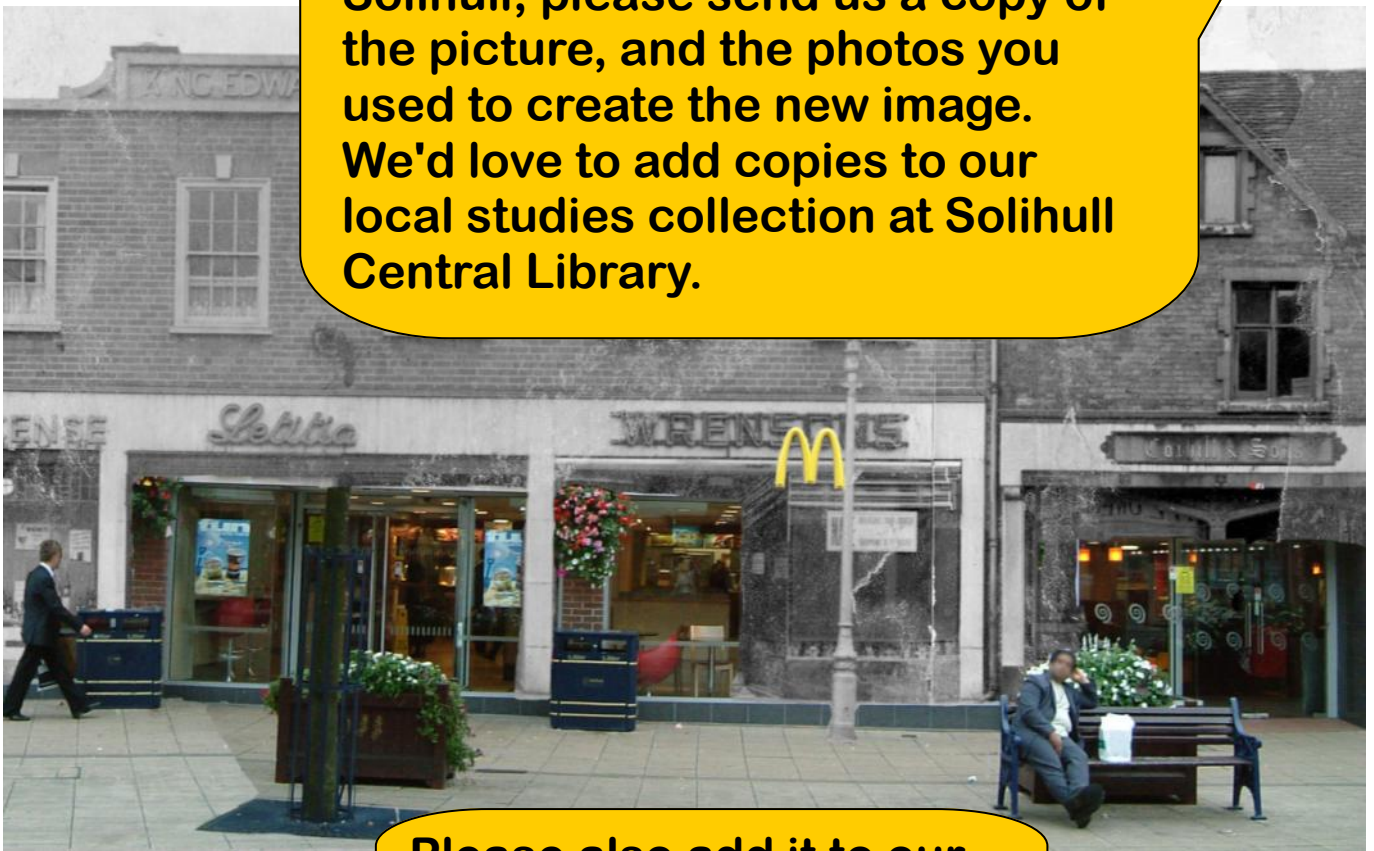
Select the layer mask and use the brush tool to rub out/bring back areas of the image as required. A black brush will rub out areas of the image, a white brush will restore them.

Useful tip: a graphics tablet and pen is easier to use for this than a mouse.

Step 5

When you're happy with the image, save the file. Then flatten the image so that you have only one layer. Save the flattened image as a jpg/tiff file.

If the image is of somewhere in Solihull, please send us a copy of the picture, and the photos you used to create the new image. We'd love to add copies to our local studies collection at Solihull Central Library.



Please also add it to our Solihull then and now Flickr group!

Help!

Improve your computer skills with books from Solihull Libraries. We have books you can borrow that can help you use various computer programs such as Photoshop Elements.

You can get a FREE Solihull Library Card if you have some proof of your name and address. Ask staff for your card now!

We have two PCs at Solihull Central Library that have Photoshop Elements installed. You can have one hour's computer use per day FREE OF CHARGE with your Solihull Library Card.