



Solihull

METROPOLITAN
BOROUGH COUNCIL

Solihull Parks

What's On Guide **2012**

www.solihull.gov.uk/events



Solihull Parks

What's On Guide 2012

Introduction

Welcome to your comprehensive guide to What's On in Solihull's parks in 2012. Solihull's motto is Urbs in Rure, which means 'the town in the country', and with 17 fantastic main parks to enjoy you can see why! We are very proud of our parks and are especially proud of the fact that seven of them have achieved Green Flag status; this means they are of a high standard and have facilities for the local community.

This guide is designed to be a handy, downloadable list of events taking place in our parks throughout 2012 – save it to your computer or print off pages to stick on your noticeboard/fridge. More details about each event will be posted on the events page of our website, where you will also find information on any changes or cancellations – for example, due to poor weather conditions.

The events are grouped seasonally – just pick a time of year below and click on it to go straight to the relevant page. You'll also find details about our parks at the end of the guide.

Please feel free to download and share this guide with your friends and family, and have fun exploring the great Solihull outdoors this year!

Contents

Late winter/early spring
February and March
2

Late spring
– April and May
4

Summer
– June
6

Summer
– July
7

Summer
– August
8

Autumn
– September/October
10

Winter
– November/December
12

Information about parks
in Solihull
13

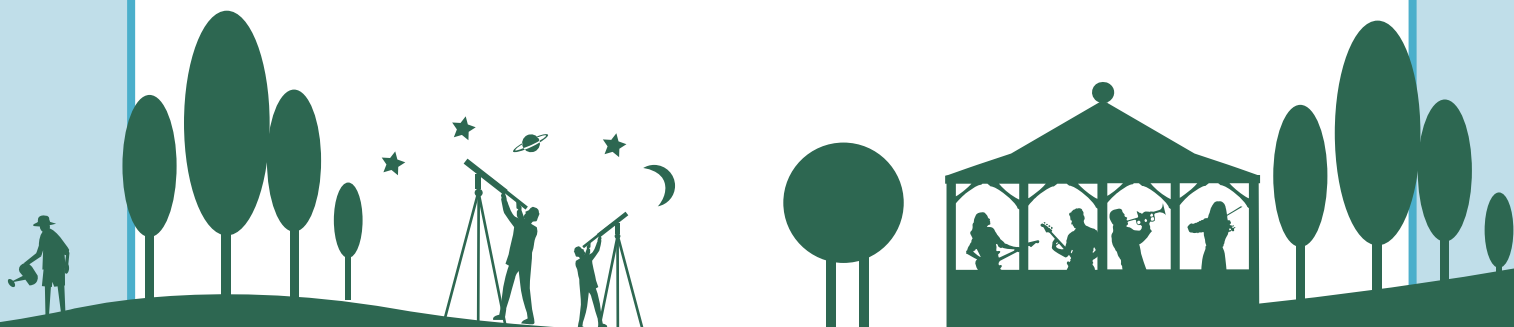


LATE WINTER/EARLY SPRING

February and March

February

| When | What | Where | Cost | How to book/ more information |
|---|---|---|--------------|---|
| Sunday 5 February times tbc | Woodland Management with the Solihull Conservation Volunteers | Bill's Wood | FREE | Contact davidcollins1@aol.com or 0121 459 1697 to reserve your place. |
| Tuesday 14 February, 11am-1pm | Winter Treasure Trail – treasure and crafts! | Bentley Heath Park meet at the car park | £1 per child | No booking necessary |
| Thursday 16 February 11am-12.30pm | Bird Feeder Making | Hillfield Park, meet by the play area | £1 per child | No booking required Bring a plastic bottle. |
| Sunday 19 February times tbc | Coppicing with the Solihull Conservation Volunteers | Millison's Wood | FREE | Contact davidcollins1@aol.com or 0121 459 1697 to reserve your place. |



March

| When | What | Where | Cost | How to book/ more information |
|--|--|--|------|--|
| Sunday 4 March times tbc | Rhododendron Control with the Solihull Conservation Volunteers | Elmdon Coppice | FREE | Contact davidcollins1@aol.com or 0121 459 1697 to reserve your place. |
| Friday 9 March, 11am-3pm | Park Rangers and Events promotion | tbc | FREE | Find out more about this year's park events and take part in a free craft activity. |
| Tuesday 13 March, 7.30pm-9.30pm | Star Gazing with the Knowle Astronomical Society | Dorridge Park | FREE | Reserve your place on 0121 704 8000 and if you have your own telescope, bring it with you. If conditions are not suitable, this event will be postponed until Thursday 15 March. |
| Wednesday 14 March, 10.30am-12pm | Community Day with the Environment Champions | Willow Park, Needlers End Lane, Balsall Common | FREE | Meet at the main entrance. Bring gloves, sturdy shoes and old clothes/overalls. |
| Sunday 18 March times tbc | Sycamore Coppicing with the Solihull Conservation Volunteers | Dorridge Wood | FREE | Contact davidcollins1@aol.com or 0121 459 1697 to reserve your place. |
| Wednesday 21 March, 10.30am-12pm | Community Day with the Environment Champions | Beechcroft Open Space, Smith's Wood | FREE | Meet at Danzey Green Road/ Brownsover Close car park. Bring gloves, sturdy shoes and old clothes/overalls. |
| Sunday 25 March, 9.30am-11.30am | Sport Relief 2012 | Tudor Grange Park and Leisure Centre | FREE | Visit www.sportrelief.com for more information |



All of our parks are on [Foursquare](#) so don't forget to check in!

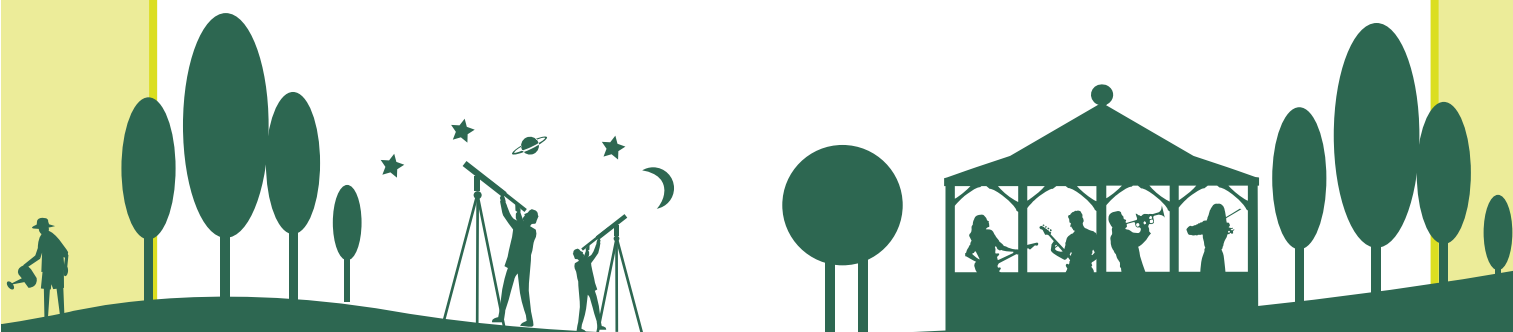


LATE SPRING

April and May

April

| When | What | Where | Cost | How to book/ more information |
|---|---|----------------------------------|--|--|
| Friday 6 April, 11am-3pm | Easter Egg Hunt, Puppet shows, rides, craft activities and more. | Elmdon Park | £2 per child, plus a small charge for some of the other attractions | Meet at the Tanhouse Farm Road car park entrance. |
| Wednesday 11 April, 11am-12.30pm | Dizzy Duck Race | Babbs Mill LNR | £1 per duck | Meet by the play area |
| Thursday 12 April, 11am-1pm | Art Animal Tracks Make plaster casts of animal footprints | Dorridge Park | £1 per child | Book your place on 0121 704 8000 and bring an apron or overalls. Meet by the car park. |
| Wednesday 18 April 1pm-3pm | Spring Walk | Meriden Park | FREE | Meet at the car park and wear sensible footwear. |
| Thursday 19 April, 10.30am-12.30pm | Scarecrow Making Day | Knowle Park | FREE | Book your place and get the equipment list on 0121 704 8000. Meet by the car park. |
| Wednesday 25 April, 10.30am-12.30pm | Community Day with the Environment Champions | Tythe Barn Lane Dickens Heath | FREE | Meet at the junction between Tythe Barn Lane and Tillesford Lane. Bring gloves, sturdy shoes and old clothes/overalls. |



May

| When | What | Where | Cost | How to book/ more information |
|---|---|--|---|---|
| Sunday 6 May, 4.30am-6.00am | Dawn Chorus | Elmdon Park | FREE | Meet at the car park on Tanhouse Farm Road. |
| Sunday 6 May, 2pm-4.15pm | Music in the Park 1: All That Jazz! | Knowle Park | FREE | Meet by the car park. Feel free to bring along a picnic. |
| Thursday 24 May – Sunday 27 May times tbc | Robert Wilkinson's Funfair | Meriden Park | £1 per person admission, plus a small charge for some of the rides. | Meet by the adventure playground Details may be subject to change |
| Saturday 19 May 12.30pm-4.30pm | Donkey Derby | Shirley Park | FREE | For more information contact Hugh Masters on h.masters@talktalk.net or 01564 774230. |
| Wednesday 23 May, 10.30am-12pm | Community Day with the Environment Champions | Hermitage Park, Hermitage Road (off Moat Lane) | FREE | Meet at the entrance by the ambulance station. Bring gloves, sturdy shoes and old clothes/overalls. |



You can also find details about park events on Facebook – just head to www.facebook.com/solihullcouncil for reminders of events before they happen and photos from events afterwards.

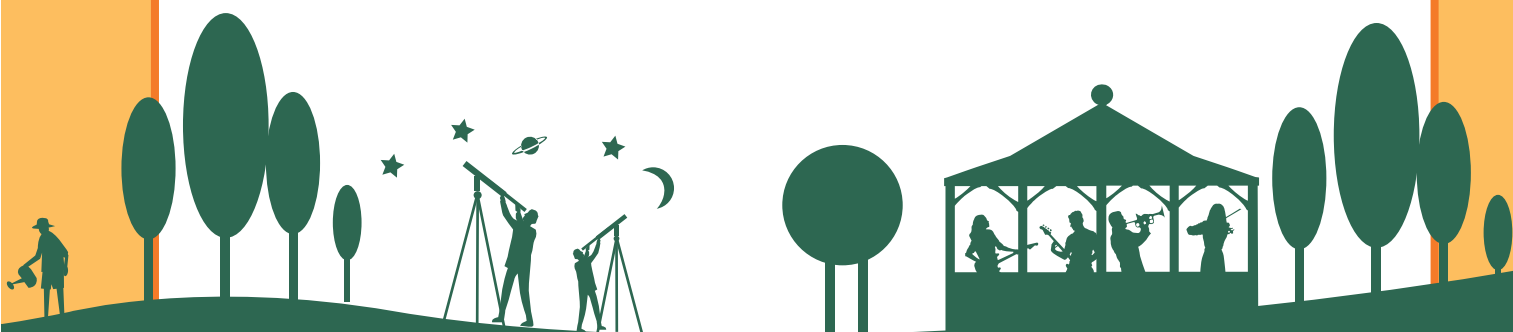


SUMMER

June, July, August

June

| When | What | Where | Cost | How to book/ more information |
|---|---|----------------------|---|--|
| Saturday 2 June, 11.30am-4.30pm | Knowle Festival/ Knockout Knowle | Knowle Park | See website for details | Visit the Friends of Knowle Park website for information on the Festival to register a team for Knockout Knowle. Register at http://www.itsaknockout.ardenpta.co.uk |
| Sunday 3 June, 2pm-4.15pm | Music in the Park 2: Queen's Diamond Jubilee Concert | Shirley Park | FREE | Bring along a picnic and take part in the Big Jubilee Lunch. |
| Wednesday 6 June, 11am-1pm | Teddy Bear's Picnic Royal theme and craft activity – and a chance to win a prize. | Meriden Park | £1 for the craft activity Plus small charge for some of the other attractions. | No booking required |
| Thursday 7 June, 11am-2.30pm | Kings and Queens Garden Party. Fancy dress, treasure trail, crafts and more | Malvern Park | £1 for the craft and treasure trail | Meet by the horse statue. No booking required |
| Thursday 14 June – Saturday 16 June times tbc | Solihull Funfair | Tudor Grange Park | Various | Visit www.solihullcarnival.com |
| Saturday 16 June times tbc | Solihull Carnival | Tudor Grange Park | FREE | Visit www.solihullcarnival.com |



June

| When | What | Where | Cost | How to book/ more information |
|---|--|--|--|--|
| Tuesday 19 June/ Wednesday 20 June | Outdoor Dance Programme Playground | Tudor Grange Park (Tuesday)/ Meriden Park (Wednesday) | FREE | Search for 'Dancescape' on Facebook. |
| Saturday 30 June 10.30am - 2.30pm | Friends of Elmdon Park event Dog show, dizzy duck race and lots more! | Elmdon Park | FREE | Parking at Tanhouse Farm Road and St Nicholas Church, Damson Parkway. |
| Saturday 30 June 10.30am - 2.30pm | Minibeast Mayhem at the Friends of Elmdon Park event | Elmdon Park | £1 for the craft activity and bug hunt | Bring an empty plastic bottle to make a home for insects. Meet at Tanhouse Farm Road car park. |

July

| When | What | Where | Cost | How to book/ more information |
|--|---|---|---------|--|
| Sunday 1 July, 11am-1pm (approx.) | Race For Life | Malvern and Brueton Parks, followed by Mell Square | FREE | Register to run at www.raceforlife.org or on 0871 641 111. |
| Wednesday 4 July, 10.30am-12pm | Community Day with the Environment Champions | Babbs Mill LNR | FREE | Meet at the car park entrance by Cooks Lane. Bring gloves, sturdy shoes and old clothes/overalls. |
| Wednesday 11 July, 10.30am-12pm | Community Day with the Environment Champions | Elmdon Park | FREE | Meet at the car park on Tanhouse Farm Road. Bring gloves, sturdy shoes and old clothes/overalls. |
| Saturday 14 July, 12.30pm-4.30pm (gates open at 12pm) | Shirley Carnival | Shirley Park | Various | Visit www.shirleylions.co.uk |



July

| When | What | Where | Cost | How to book/ more information |
|---|---|----------------------|--|---|
| Tuesday 17 July, Starting time 7.00pm. Running time 2 hours including interval | Much Ado About Nothing Outdoor Theatre Performance | Brueton Park | £9 adult £8 concessions £3 child in advance. £11 adult £10 concessions on gate | Book online at www.solihullartscomplex.co.uk Bring a blanket, seat, picnic and warm clothing. |
| Wednesday 18 July, 10.30am-12pm | Community Day with the Environment Champions | Knowle Park | FREE | Meet at the car park on Longdon Road. Bring gloves, sturdy shoes and old clothes/overalls. |
| Saturday 21 July 2pm-5pm | Music in the Park 3: The young local stars of tomorrow play rock, pop and soul | Tudor Grange Park | FREE | Bring along a picnic and get ready to rock with some great local bands. Meet by the play area. |
| Sunday 22 July, 10.30am-5pm | British Federation of Pedal Car Racing event | Tudor Grange Park | FREE | Meet by the cycle track. |
| Tuesday 31 July, Starting time 7.00pm. Running time 2 hours including interval | The Railway Children Outdoor Theatre Performance | Brueton Park | £7 adult £6 per child in advance £8 adult £7 child on gate. | Book online at www.solihullartscomplex.co.uk Bring a blanket, seat, picnic and warm clothing. |

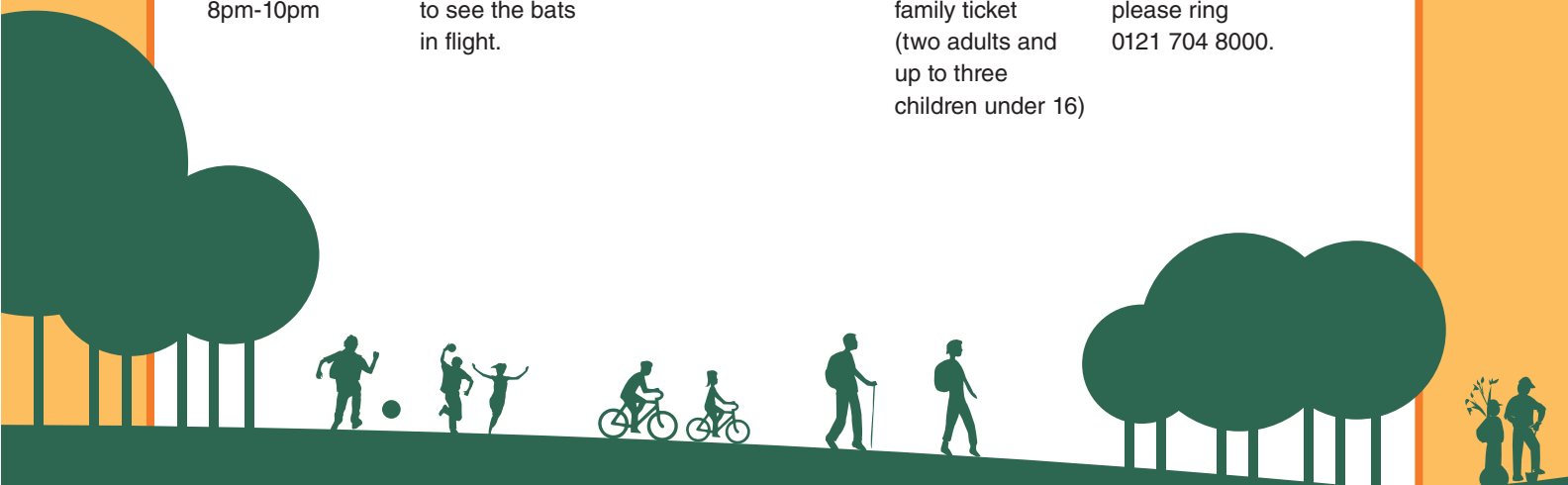
August

| When | What | Where | Cost | How to book/ more information |
|---|---|----------------------|--|--|
| Wednesday 1 August, 11am-3pm | Fun Festival 1: School Sports Day | Tudor Grange Park | £1 for the craft activity, (plus a small charge for some of the other attractions) | Meet by the children's play area. |
| Thursday 2 August – Sunday 5 August | Robert Wilkinson's Funfair | Meriden Park | £1 per person admission, plus a small charge for some of the rides. | Meet by the adventure playground. |
| Wednesday 8 August, 11am-3pm | Fun Festival 2: We are the Champions! | Meriden Park | £1 for the craft activity, (small charge for other attractions) | Meet by the children's play area. No booking required. |



August

| When | What | Where | Cost | How to book/ more information |
|---|--|-----------------------|---|--|
| Thursday 9 August, 8pm-10pm | Bat Walk 1 | Elmdon Park | £3 per person or £10 per family ticket (two adults and up to three children under 16) | Meet at the Tanhouse Farm Road car park. For booking enquiries please ring 0121 704 8000. |
| Wednesday 15 August, 11am-3pm | Fun Festival 3: Way Out West! | Shirley Park | £1 per child for the craft and treasure trail | Meet opposite the Rose Garden. No booking required. |
| Thursday 16 August, 8pm-10pm | Bat Walk 2 | Babbs Mills LNR | £3 per person or £10 per family ticket (two adults and up to three children under 16) | Meet at the car park off Fordbridge Road, between Oakthorpe Drive and Dunton Road. To book please ring 0121 704 8000. |
| Wednesday 22 August, 11am-3pm | Fun Festival 4: Summer Holiday! | Olton Jubilee Park | £1 per child for the craft and treasure trail | Meet by the park entrance off Lyndon Road. |
| Thursday 23 August, 10.30am-12.30pm | Art Animal Tracks 2. Make plaster casts of animal footprints to take home | Palmer's Rough | £1 per child | Book your place on 0121 704 8000 and bring an apron/overalls. |
| Sunday 26 August, 2pm-4.15pm | Music in the Park 4 Brass Magic! Finale to this year's music events | Elmdon Park | FREE | Feel free to bring a picnic. Meet by the Tanhouse Farm Road car park entrance. |
| Wednesday 29 August, 11am-3pm | Fun Festival 5: All the Fun of the Fair Fun Festival finale | Lavender Hall Park | £1 per child for the craft and treasure trail | Meet by the children's play area. |
| Thursday 30 August, 8pm-10pm | Bat Walk 3 Last chance to see the bats in flight. | Brueton Park | £3 per person or £10 per family ticket (two adults and up to three children under 16) | Meet by the car park. For booking enquiries please ring 0121 704 8000. |



AUTUMN

September and October

September

| When | What | Where | Cost | How to book/ more information |
|--|---|------------------------------|------|---|
| Saturday 1 September, 12pm-2pm | Heritage Trail discover the history of Elmdon Park | Elmdon Park | FREE | Meet at the church car park off Damson Parkway |
| Sunday 9 September times tbc | Dorridge Day | Dorridge Park | FREE | Visit www.roundtable.org.uk |
| Wednesday 12 September, 10.30am-12pm | Autumn planting and clean up day with the Environment Champions | Malvern and Brueton Parks | FREE | Meet at the car park in Malvern Park off Park Road. Bring gloves, sturdy shoes and old clothes/overalls. |
| Wednesday 19 September, 10.30am-12pm | Autumn planting and clean up day with the Environment Champions | Tudor Grange Park | FREE | Meet by the skate park. Bring gloves, sturdy shoes and old clothes/overalls. |
| Sunday 23 September | Solihull Rotary Fun Run and Walk | Tudor Grange Park | FREE | tbc |
| Wednesday 26 September, 10.30am-12pm | Autumn planting and clean up day with the Environment Champions | Lavender Hall Park | FREE | Meet at the car park. Bring gloves, sturdy shoes and old clothes/overalls. |



Stay up to date with all the latest borough news on Twitter, where we're [@SolihullCouncil](https://twitter.com/SolihullCouncil)



October

| When | What | Where | Cost | How to book/ more information |
|--|--|----------------|---|---|
| Tuesday 2 October, 7.30-9.30pm | Star Gazing, with the Knowle Astronomical Society | Brueton Park | FREE | Book your place on 0121 704 8000. Meet at the Parkridge Centre and, if you have your own telescope, bring it with you. If conditions are not suitable, this event will be postponed until Thursday 4 October. |
| Friday 5 October, 10.30am-12pm | Autumn planting and clean up day with the Environment Champions | Hillfield Park | FREE | Meet at the car park. Bring gloves, sturdy shoes and old clothes/overalls. |
| Friday 12 October, 10.30am-12pm | Autumn planting and clean up day with the Environment Champions | Shirley Park | FREE | Meet by the play area. Bring gloves, sturdy shoes and old clothes/overalls. |
| Sunday 14 October, 10.15am-3pm | Solihull CC Cyclo Cross Race, part of the West Midlands Cyclo Cross League | Elmdon Park | Various | Visit www.wmcccl.co.uk |
| Tuesday 30 October, 11am to 1pm | Wicked Workshop and Terror Trail | Elmdon Park | £1 per child for the craft and treasure trail | Meet by the car park on Tanhouse Farm Road Come in fancy dress! |
| Wednesday 31 October, 5.30pm, 5.50pm, 6.10pm, 6.30pm, 6.50pm | Haunting Halloween | Brueton Park | £3 per adult, £2 per child | For booking enquiries please ring 0121 704 8000. Bring a torch, warm clothing and come in your scariest fancy dress! |



EARLY WINTER

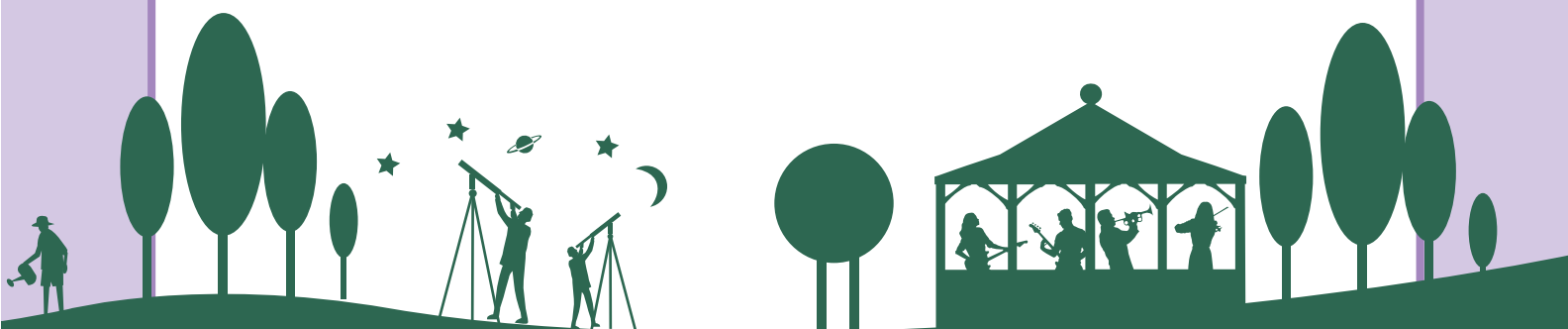
November and December

November

| When | What | Where | Cost | How to book/ more information |
|---|---|----------------------|--|--|
| Saturday 3 November, gates 5.30pm, display at 6.30pm | Solihull Round Table Fireworks Display | Tudor Grange Park | FREE but charity collections will be made | Visit www.roundtable fireworks.com |
| Wednesday 7 November, 10.30am-12pm | Autumn planting and clean up day with the Environment Champions | Meriden Park | FREE | Meet by the play area. Bring gloves, sturdy shoes and old clothes/overalls. |
| Wednesday 14 November, 10.30am-12pm | Autumn planting and clean up day with the Environment Champions | Dorridge Park | FREE | Meet by the car park. Bring gloves, sturdy shoes and old clothes/overalls. |
| Saturday 17 November 11am-3pm | Oaks and Shires | tbc | FREE | Learn about woodlands, take part in traditional woodland crafts and meet the heavy horse. |

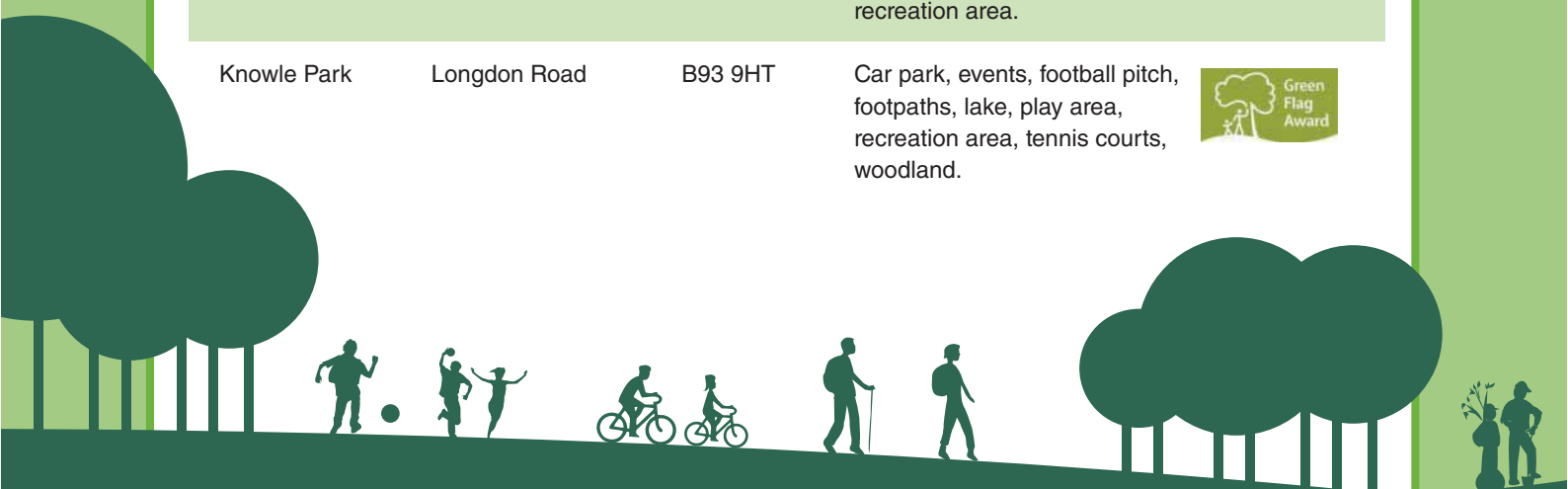
December

| When | What | Where | Cost | How to book/ more information |
|-----------------------------------|--|--------------|--------------|--|
| Sunday 9 December, 12pm-3pm | Christmas in the Park Carols in the Park from 1pm | Brueton Park | £3 per child | Reduce your queuing by booking a timeslot on 0121 704 8000. |



Information about parks in Solihull

| Park | Location | Postcode | Facilities | Green Flag? |
|----------------------------|--------------------------------------|--------------------|--|---|
| Babbs Mills Park & LNR | Fordbridge Road, Kingshurst | B37 6LN | Car park, changing rooms, events, football pitches, footpaths, lake, river, Local Nature Reserve, play area, recreation area, walks, woodland. | |
| Bentley Heath Park | Widney Road Bentley Heath | B93 9BH | Car park, changing rooms, events, footpaths, multiple sports court, play area, recreation area, skate park park, tennis courts. | |
| Cole Bank Park | Bushbury Croft | B37 6RH | River, play area, walks, wildflower meadow, woodland. | |
| Dickens Heath Country Park | Aldershaws | B90 1SQ | Events, footpaths, wildflower meadow, wetland area. | |
| Dorridge Park | Grange Road | B93 8LJ | Car park, events, football pitches, footpaths, Friends of the Park group, stream, play area, woodland. |  |
| Elmdon Park | Tanhouse Farm Road or Damson Parkway | B92 9EY or B91 2PP | Car park, events, football pitch, footpaths, lake, stream, Local Nature Reserve, tennis courts, walks, woodland, Park Action group. |  |
| Hillfield Park | Monkspath Hall Road | B91 3LU | Car park, changing rooms, football pitches, footpaths, lake, play area, recreation area. | |
| Knowle Park | Longdon Road | B93 9HT | Car park, events, football pitch, footpaths, lake, play area, recreation area, tennis courts, woodland. |  |



Information about parks in Solihull

For more detailed information and individual park maps, visit www.solihull.gov.uk/parks



You can also find details about park events on Facebook – just head to www.facebook.com/solihullcouncil for reminders of events before they happen and photos from events afterwards.



Also, if you're a Foursquare user be sure to check in to our parks when you're out and about, and feel free to leave tips and photos too. Who knows, you could soon claim the title of *Mayor* of your favourite park! Add us a friend too.



Finally, you can stay up to date with all the latest borough news on Twitter, where we're [@SolihullCouncil](https://twitter.com/SolihullCouncil)

