



**Solihull**  
METROPOLITAN  
BOROUGH COUNCIL

# Solihull

# Unemployment Briefing



Community & Economic  
Regeneration Division

**December 2009**

## Unemployment Briefing: December 2009

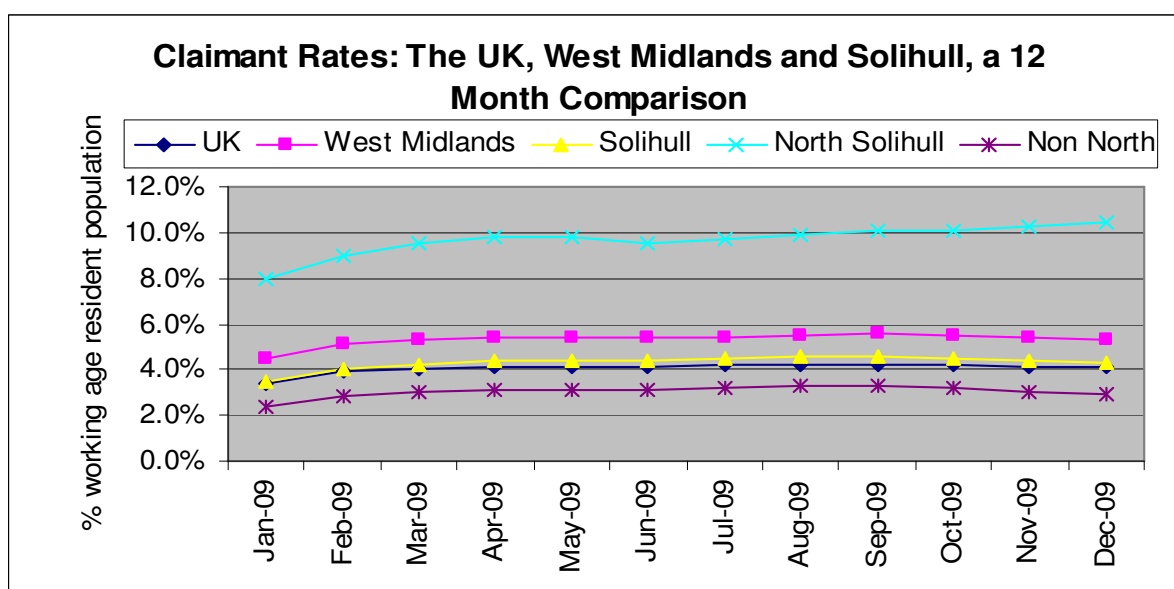
The standard measure of unemployment in the Borough of Solihull is the 'claimant count'; this count measures only those people who are claiming Jobseekers Allowance (JSA). This analysis of the claimant count is derived from the administrative records of Jobcentre Plus.

### The Claimant Count – Solihull in a National, Regional and Local Context.

#### National Context

▲ Increase    ▼ Decrease    ◀ No change (compared to the previous month's figure)

	Male No's	Male Rate %	Female No's	Female Rate %	Total No's	Total Rate %
<b>U.K</b>	1,148,772	5.8	418,233	2.3	1,567,005	4.1 ◀
<b>West Midlands</b>	130,207	7.5	45,604	2.9	175,811	5.3 ▼
<b>Solihull</b>	3,847	6.1	1,404	2.4	5,251	4.3 ▼
<b>Non North Wards</b>	2,049	4.0	788	1.7	2,837	2.9 ▼
<b>North Solihull</b>	1,801	15.5	620	5.3	2,421	10.4 ▲



#### UK / Regional Context

Government Office Region	Number	Rate
East	116,616	3.3 ▼
East Midlands	110,063	4.0 ◀
London	220,750	4.3 ▼
North East	85,625	5.4 ▲
North West	194,777	4.6 ◀
Northern Ireland	53,084	4.8 ◀
Scotland	133,738	4.1 ◀
South East	152,629	3.0 ◀
South West	90,035	2.9 ◀
Wales	78,084	4.3 ◀
<b>West Midlands</b>	175,811	5.3 ▼
Yorkshire and The Humber	155,793	4.8 ◀
United Kingdom	1,567,005	4.1 ◀

Within the UK Government Office regions the North East recorded the only regional increase (0.1%) in the claimant count rate, making the North East claimant rate of 5.4% the highest recorded in the UK for December 2009. Eight regions claimant rates stayed the same as in November and three regions had

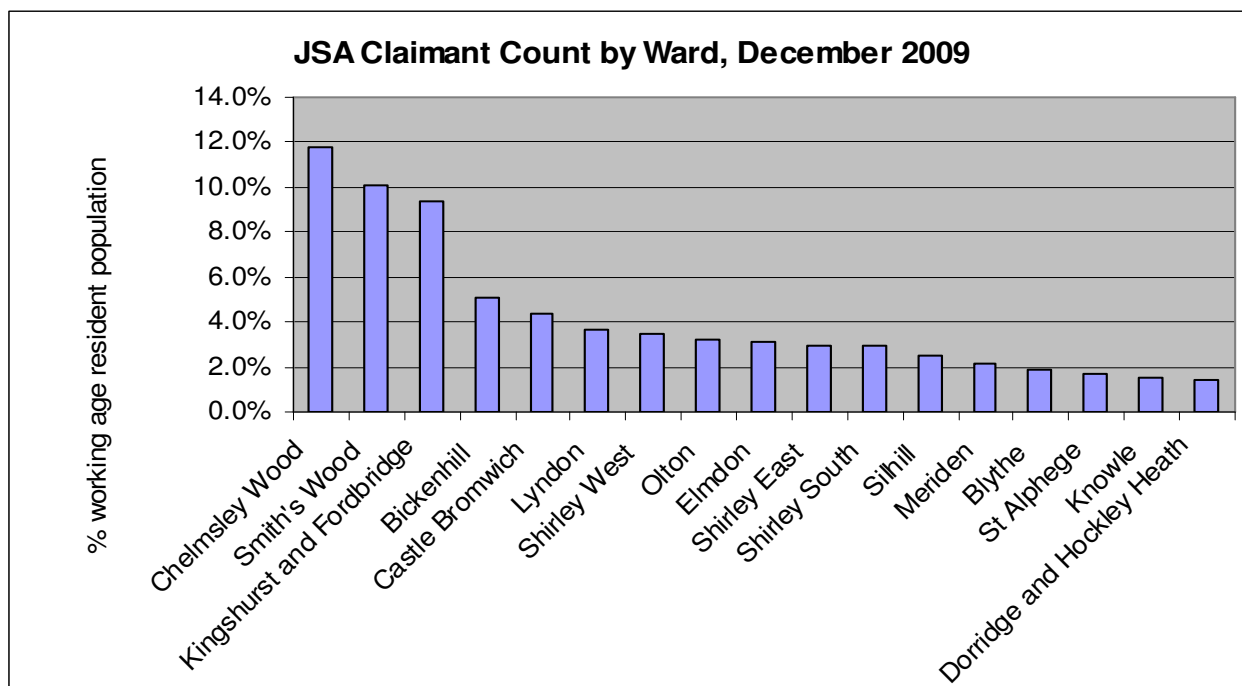
claimant rates which decreased by 0.1%. The West Midlands claimant count rate decreased to 5.3%, a decrease of 0.1% for the third consecutive month.

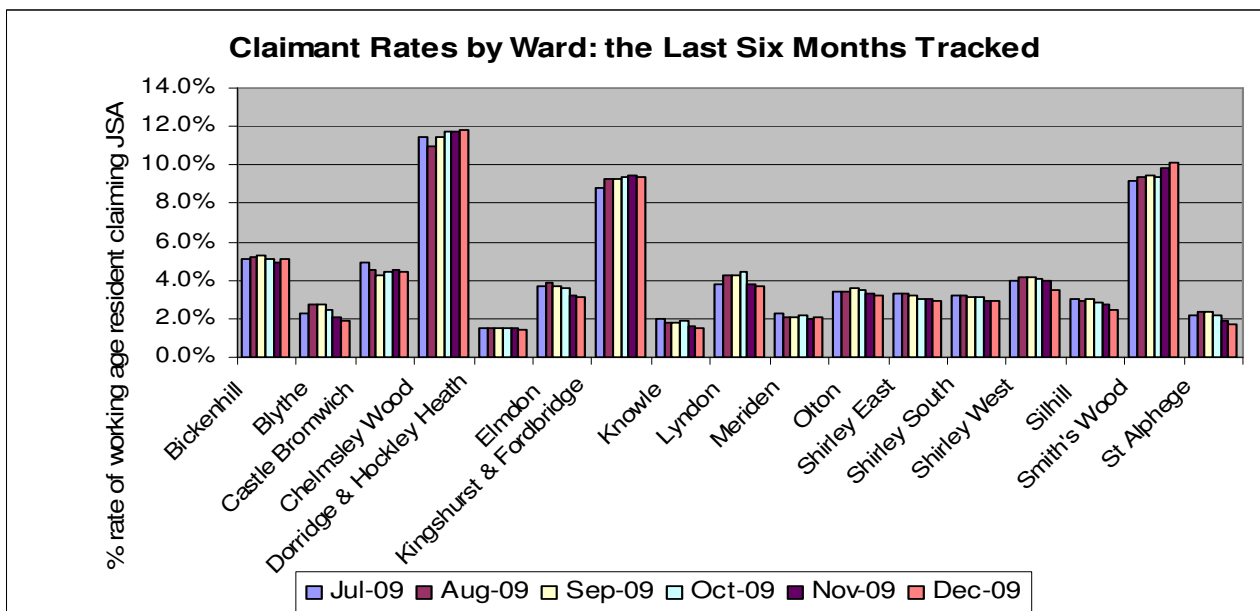
### Local Context

The numbers of people unemployed for each ward are based upon the number of Job Seeker's Allowance claims derived from the administrative records of Jobcentre Plus. Claimant count rates have been calculated using Office for National Statistics Mid-2007 Population Estimates for 2009 Wards in England and Wales.

### The claimant count in Solihull's wards (numbers and rates)

	Male Numbers	Male Rates %	Female Numbers	Female Rates %	Total Numbers	Total Rates %
Bickenhill	287	7.2	100	2.8	387	5.1 ▲
Blythe	111	2.6	47	1.2	158	1.9 ▼
Castle Bromwich	232	6.0	90	2.6	322	4.4 ▼
Chelmsley Wood	677	17.8	209	5.7	886	11.8 ▲
Dorridge & Hockley Heath	65	2.0	21	0.7	86	1.4 ▼
Elmdon	147	4.0	72	2.1	219	3.1 ▼
Kingshurst and Fordbridge	547	13.9	198	5.0	745	9.4 ▼
Knowle	60	1.9	27	1.0	87	1.5 ▼
Lyndon	208	5.2	80	2.1	288	3.7 ▼
Meriden	96	2.7	43	1.4	139	2.1 ▲
Olton	167	4.6	53	1.6	220	3.2 ▼
Shirley East	125	3.8	64	2.0	189	2.9 ▼
Shirley South	163	4.4	40	1.2	203	2.9 ▼
Shirley West	173	4.7	77	2.2	250	3.5 ▼
Silhill	124	3.8	33	1.1	157	2.5 ▼
Smith's Wood	577	15.0	213	5.4	790	10.1 ▲
St Alphege	91	2.3	41	1.1	132	1.7 ▼





Unemployment figures released for December 2009 show that since the November 2009 claimant figure release, the unemployment rate in Solihull increased in four wards, decreased in twelve wards and remained the same in one ward. Smith's Wood recorded the highest claimant rate increase (0.3%), Shirley West recorded the highest claimant rate decrease (0.5%). The total number of JSA claimants in Solihull fell by 81 to 5,251.

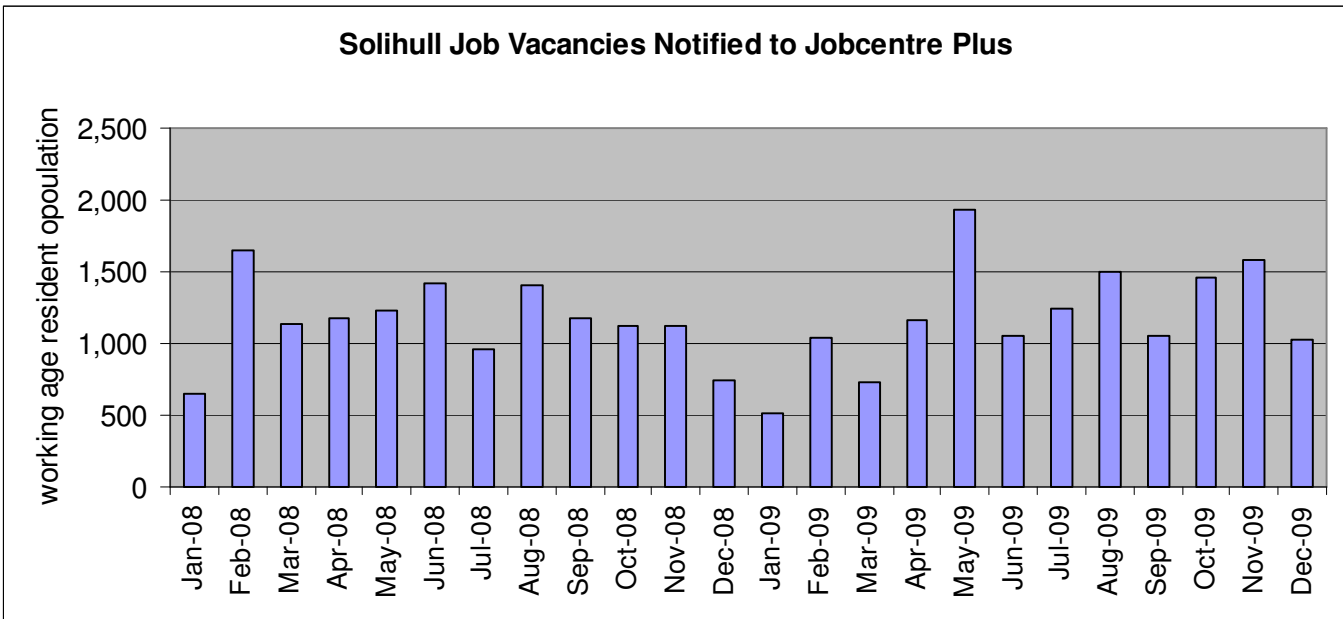
### Solihull Job Vacancies notified to Jobcentre Plus

Data on the number of vacancies notified to Jobcentre Plus is released on a monthly basis. The number of recorded job seekers divided by the number of notified vacancies per month indicates the person to job vacancy ratio. The person per job ratio in December 2009 increased to 5.14:1 from the November 2009 figure of 3.38:1.

JSA claimants per job vacancy ratio, December 2009		
Job Seekers	Vacancies	Job Seekers: Vacancy Ratio
5,251	1,021	5.14 : 1 ▲

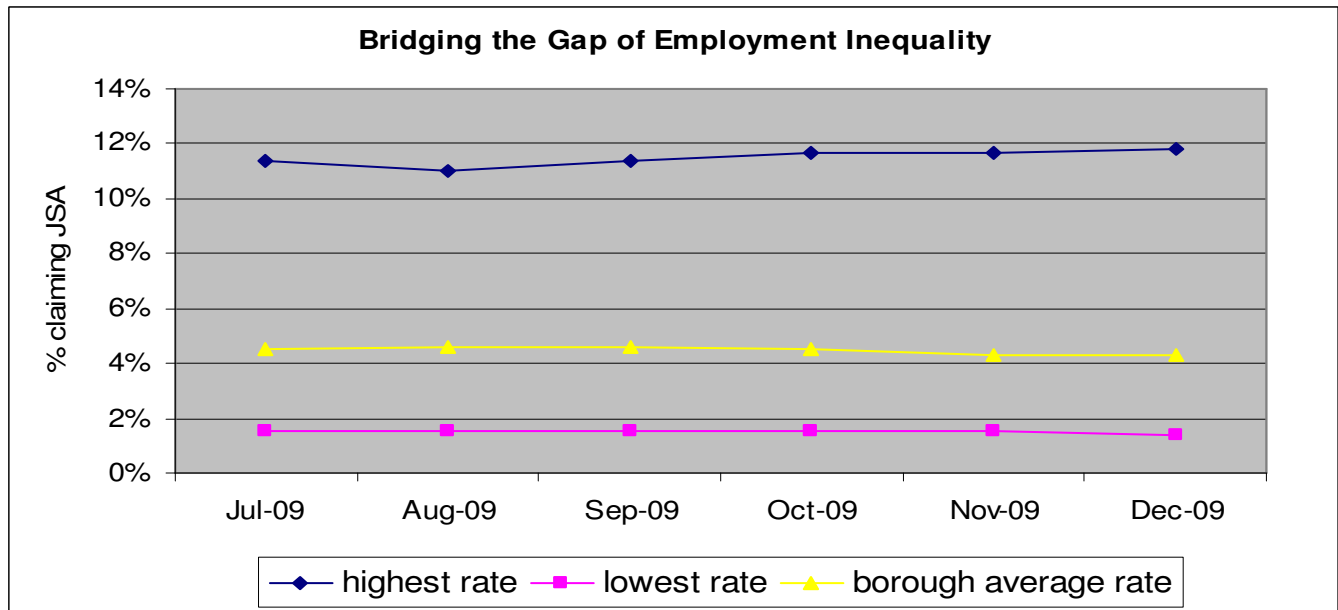
There has been a decrease of 555 notified job vacancies since November 2009, leaving a job vacancy total for December of 1,021. The graph below shows the number of vacancies over a two year period, with January 2009 showing the smallest number of vacancies and May 2009 showing the largest amount.

**Job Vacancies notified to Job Centre Plus over the last 2 years**



**Solihull – Bridging the Gap of Employment Inequality**

The chart and data below reflect the highest and lowest claimant unemployment rates across Solihull’s electoral wards on a rolling six monthly basis. The data is not ward specific; it is designed to use the highest and lowest rates to determine the monthly trend of the employment gap which exists in Solihull.



The employment inequality gap in December 2009 increased by 0.2% to 10.4 %.

<b>Employment Inequality Gap, December 2009</b>	<b>10.4 % ▲</b>
---	-----------------

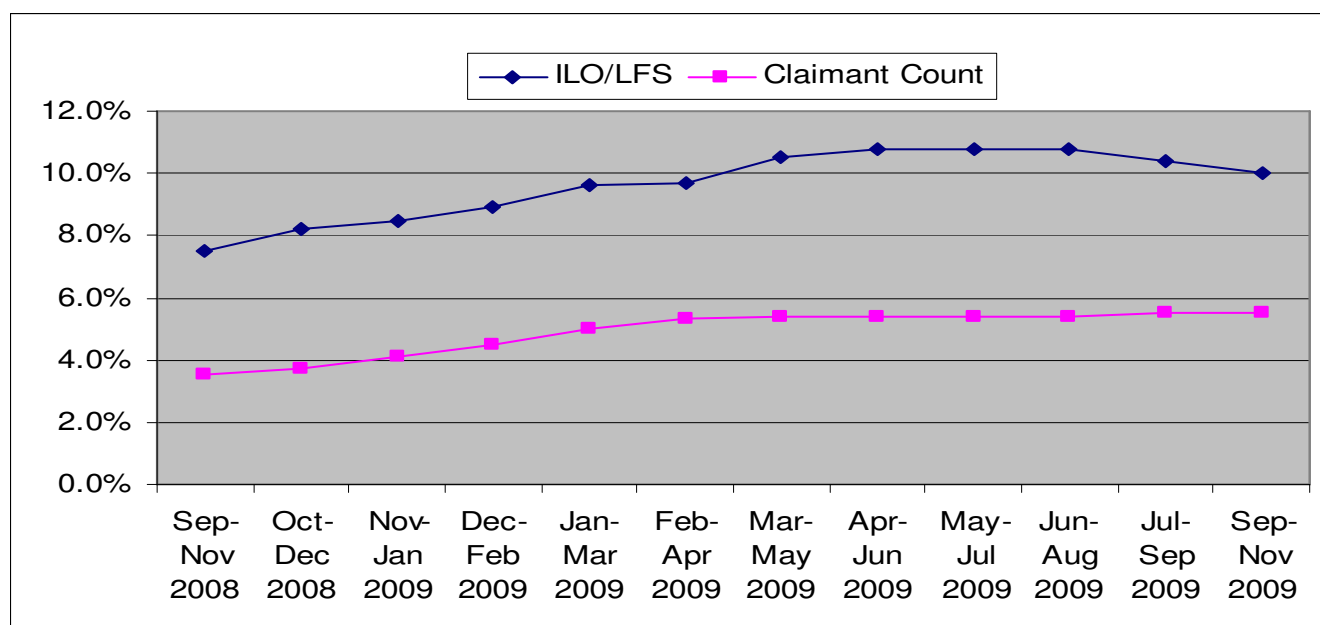
**Reporting Unemployment**

There are various methods that are used to calculate and report the number of people not in employment. The robustness of this data varies and figures reported in the media can vary greatly depending on the source of the data. Worklessness data is calculated as detailed above and contains

information derived from a number of benefit claimant groups. Unemployment data can be calculated using the Job Seekers Allowance (JSA) Claimant Count or the Labour Force Survey (which uses the internationally agreed International Labour Organisation definition of unemployment) Claimant Count figures consist only of those who are in receipt of job seekers allowance. ILO/LFS figures include all persons of working age who are not in employment but would like to work. Below are the unemployment figures for the West Midlands (as the LFS is not available at Solihull level) using the two methods.

West Midlands		
Date	ILO / LFS	Claimant Count
Aug-Oct 2008	7.4	3.4%
Sep-Nov 2008	7.5	3.5%
Oct-Dec 2008	8.2	3.7%
Nov-Jan 2008/09	8.5	4.1%
Dec-Feb 2008/09	8.9	4.5%
Jan-Mar 2009	9.6	5%
Feb-Apr 2009	9.7	5.3%
Mar-May 2009	10.5	5.4%
Apr-Jun 2009	10.8	5.4%
May-Jul 2009	10.8	5.4%
Jun-Aug 2009	10.8	5.4%
Jul-Sep 2009	10.4	5.5%
Sep-Nov 2009	10.0	5.5%

**West Midlands Unemployment Figures: JSA Claimant Count and ILO/LFS**  
**12 month comparison**



**A summary of points relating to Solihull from:  
The State of the Region Report, Jobcentre Plus, December 2009**

**Employment Rate**

The employment rate for Solihull during the period April 2008 to March 2009 was recorded at 71.8%, the West Midland figure for the same period was recorded at 71.3% and Birmingham's at 61.6%

There are significant variations in the employment rate for particular groups, including:

	<b>Birmingham</b>	<b>Solihull</b>	<b>West Midlands</b>
Ethnic Minority Population	47.7%	62.8%	54.0%
White Population	70.6%	72.5%	74.4%
Disabled People	38.9%	57.0%	47.1%
All aged 20-24	55.5%	65.9%	63.9%

### **Changes in Unemployment November 2008 to November 2009**

	<b>November 2008</b>	<b>November 2009</b>	<b>Change</b>	<b>% Change</b>
Solihull	3,410	5,332	1,922	56.4%

Lyndon and Castle Bromwich both had increases in excess of 80%. The trend is downwards, however on-flows fell by 8.4% in Solihull when compared with the previous quarter (June to August 2009).

### **Skills**

50.8% of the working age population in Solihull have qualifications at NVQ level 3 or above (compared with 42.3% in the West Midlands).

12.5% of Solihull's working age population have no qualifications, compared with 16% in the region.

### **On Flows**

On-flows in Solihull increased by 21.5% in the period September to November 2009, when compared with the same period in 2008. The regional increase was 12.1%.

The trend is downwards, on-flows fell by 8.4% in Solihull when compared with the previous quarter (June to August 2009).

### **Off Flows**

Off-flows increased by 48.0% in Solihull in the period September to November 2009, when compared with the same period last year. The regional increase was 37.5%.

Off-flows are also stabilising – off-flows increased by 1.1% in Solihull when comparing the period September to November 2009 with the previous quarter (June to August). Across the region as a whole there was a slight increase of 2.3%.