



Solihull
METROPOLITAN
BOROUGH COUNCIL

Solihull

Unemployment Briefing



Community & Economic
Regeneration Division

February 2010

Unemployment Briefing: February 2010

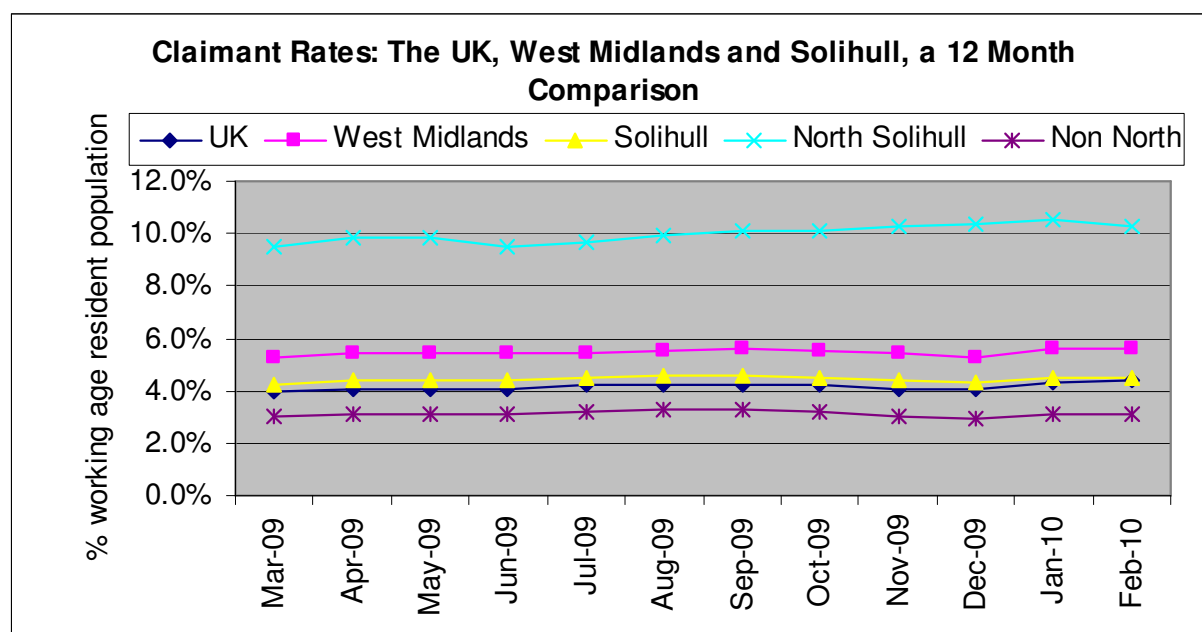
The standard measure of unemployment in the Borough of Solihull is the 'claimant count'; this count measures only those people who are claiming Jobseekers Allowance (JSA). This analysis of the claimant count is derived from the administrative records of Jobcentre Plus.

The Claimant Count – Solihull in a National, Regional and Local Context.

National Context

▲ Increase ▼ Decrease ◀ No change (compared to the previous month's figure)

	Male No's	Male Rate %	Female No's	Female Rate %	Total No's	Total Rate %
U.K	1,210,662	6.1	446,379	2.5	1,657,041	4.4 ▲
West Midlands	135,415	7.8	47,831	3.1	183,246	5.6 ◀
Solihull	3,984	6.3	1,479	2.5	5,463	4.5 ◀
Non North Wards	2,209	4.3	859	1.8	3,068	3.1 ◀
North Solihull	1,776	15.3	622	5.4	2,398	10.3 ▼



UK / Regional Context

Government Office Region	Number	Rate
East	124,614	3.6 ◀
East Midlands	115,431	4.2 ◀
London	229,114	4.5 ▲
North East	89,639	5.6 ▼
North West	204,157	4.8 ▼
Northern Ireland	56,860	5.2 ▲
Scotland	146,910	4.5 ◀
South East	161,432	3.2 ◀
South West	98,015	3.1 ◀
Wales	82,986	4.6 ◀
West Midlands	183,246	5.6 ◀
Yorkshire and The Humber	164,637	5.1 ▲
United Kingdom	1,657,041	4.4 ▲

Figures recorded for February 2010 show that the claimant count rate in three UK Government Office Regions increased by 0.1%, remained at the same rate in seven regions and fell by 0.1% in two regions.

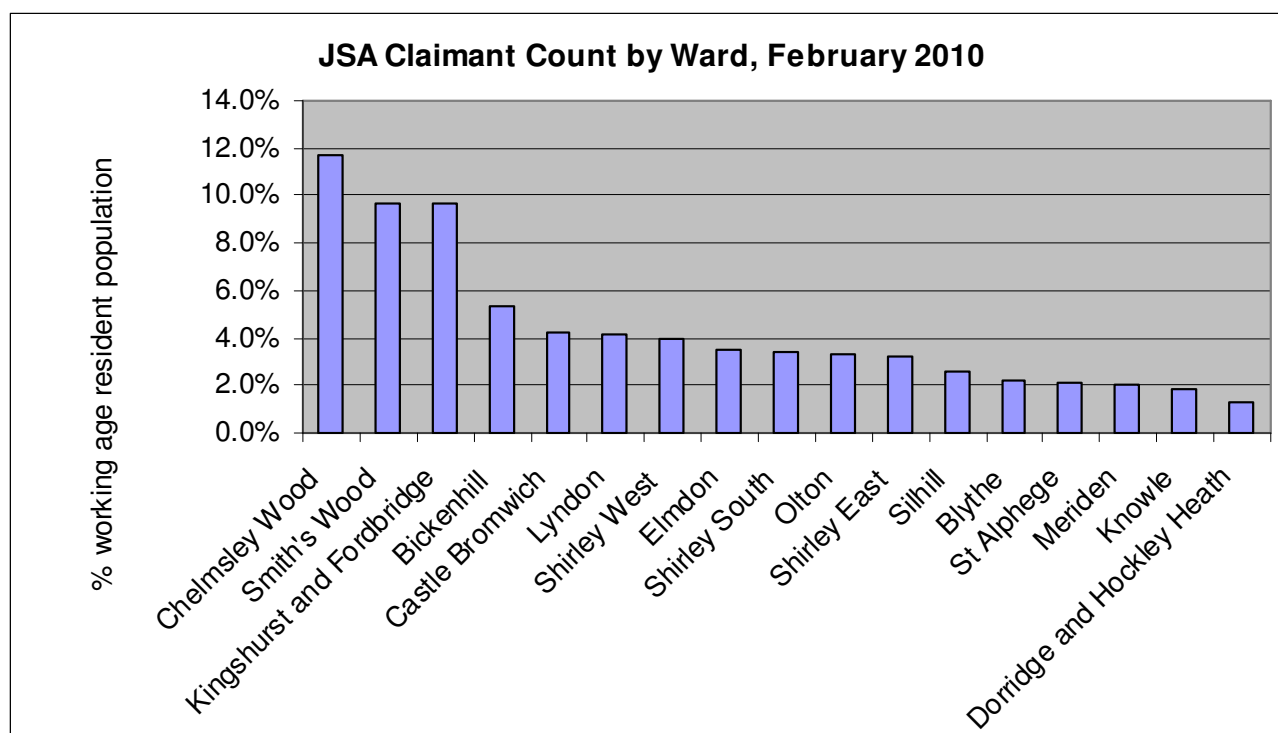
The rate decrease in the North East leaves the North East and West Midlands with the highest claimant count rates of all UK regions at 5.6%. The UK rate rose by 0.1% to 4.4%.

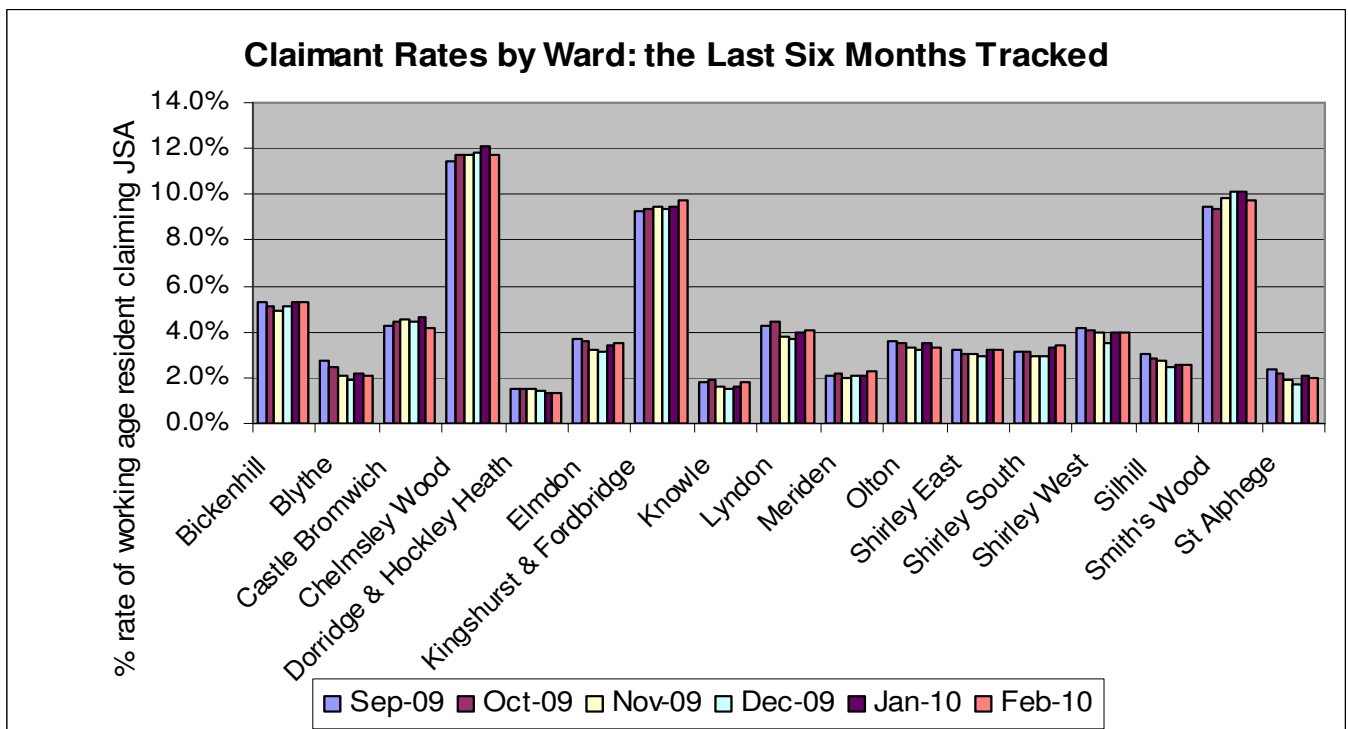
Local Context

The numbers of people unemployed for each ward are based upon the number of Job Seeker's Allowance claims derived from the administrative records of Jobcentre Plus. Claimant count rates have been calculated using Office for National Statistics Mid-2007 Population Estimates for 2009 Wards in England and Wales.

The claimant count in Solihull's wards (numbers and rates)

	Male Numbers	Male Rates %	Female Numbers	Female Rates %	Total Numbers	Total Rates %
Bickenhill	307	4,002	3,621	2.6	7,623	5.3 ▲
Blythe	128	4,266	3,926	1.2	8,192	2.1 ▼
Castle Bromwich	223	3,861	3,455	2.5	7,316	4.2 ▼
Chelmsley Wood	668	3,793	3,694	5.6	7,487	11.7 ▼
Dorridge & Hockley Heath	65	3,221	3,067	0.6	6,288	1.3 ▲
Elmdon	178	3,689	3,400	2.1	7,089	3.5 ▲
Kingshurst and Fordbridge	554	3,943	3,952	5.3	7,895	9.7 ▲
Knowle	64	3,125	2,644	1.4	5,769	1.8 ▲
Lyndon	229	3,986	3,748	2.4	7,734	4.1 ▲
Meriden	103	3,554	3,147	1.6	6,701	2.3 ▲
Olton	160	3,652	3,222	2.0	6,874	3.3 ▼
Shirley East	136	3,293	3,173	2.3	6,466	3.2 ▲
Shirley South	186	3,717	3,337	1.5	7,054	3.4 ▲
Shirley West	204	3,710	3,484	2.4	7,194	4.0 ▲
Silhill	126	3,268	2,972	1.3	6,240	2.6 ▲
Smith's Wood	554	3,856	3,970	5.2	7,826	9.7 ▼
St Alphege	100	3,988	3,609	1.5	7,597	2.0 ▼





Unemployment figures released for February 2010 show that since the January 2010 claimant figure release, the unemployment rate in Solihull increased in six wards, decreased in six wards and remained the same in five wards. Kingshurst and Fordbridge, Knowle and Meriden recorded the highest claimant rate increase (0.2%). Castle Bromwich, Chelmsley Wood and Smith's Wood recorded the highest claimant rate decrease (0.4%). The total number of JSA claimants in Solihull decreased by 43 to 5,453.

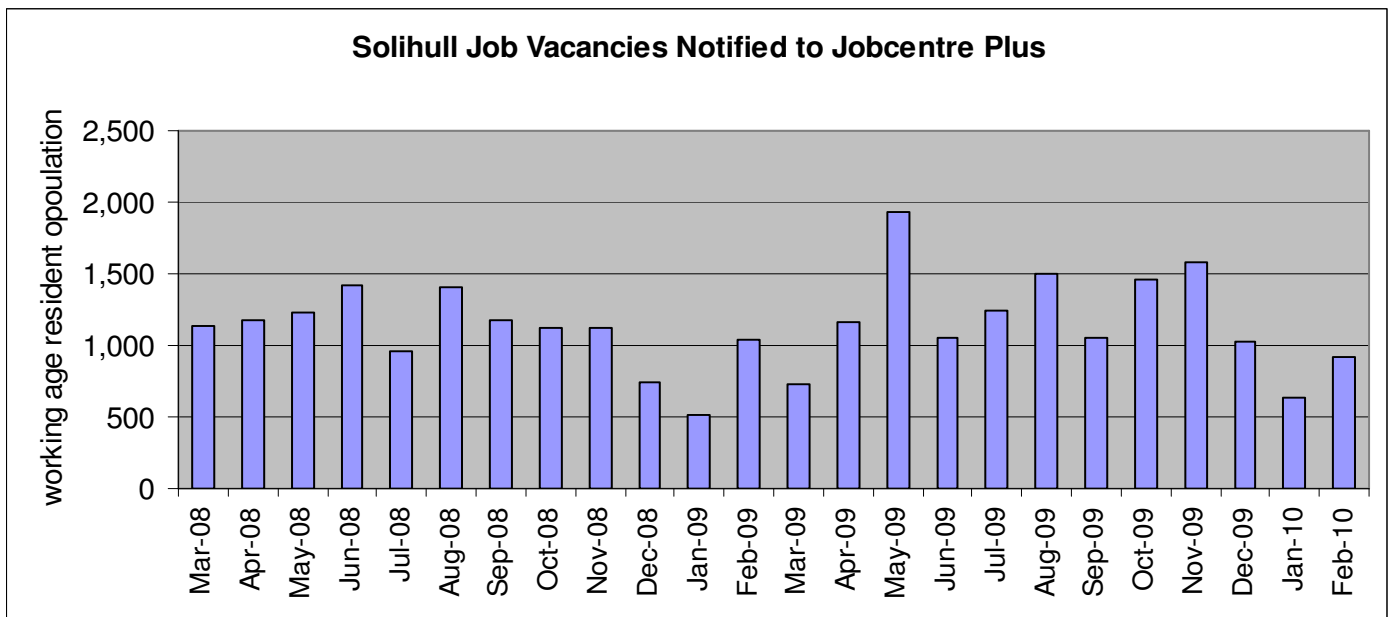
Solihull Job Vacancies notified to Jobcentre Plus

Data on the number of vacancies notified to Jobcentre Plus is released on a monthly basis. The number of recorded job seekers divided by the number of notified vacancies per month indicates the person to job vacancy ratio. The person per job ratio in February 2010 decreased to 5.95:1 from the January figure of 8.62: 1.

JSA claimants per job vacancy ratio, January 2010		
Job Seekers	Vacancies	Job Seekers: Vacancy Ratio
5,463	918	5.95:1 ▼

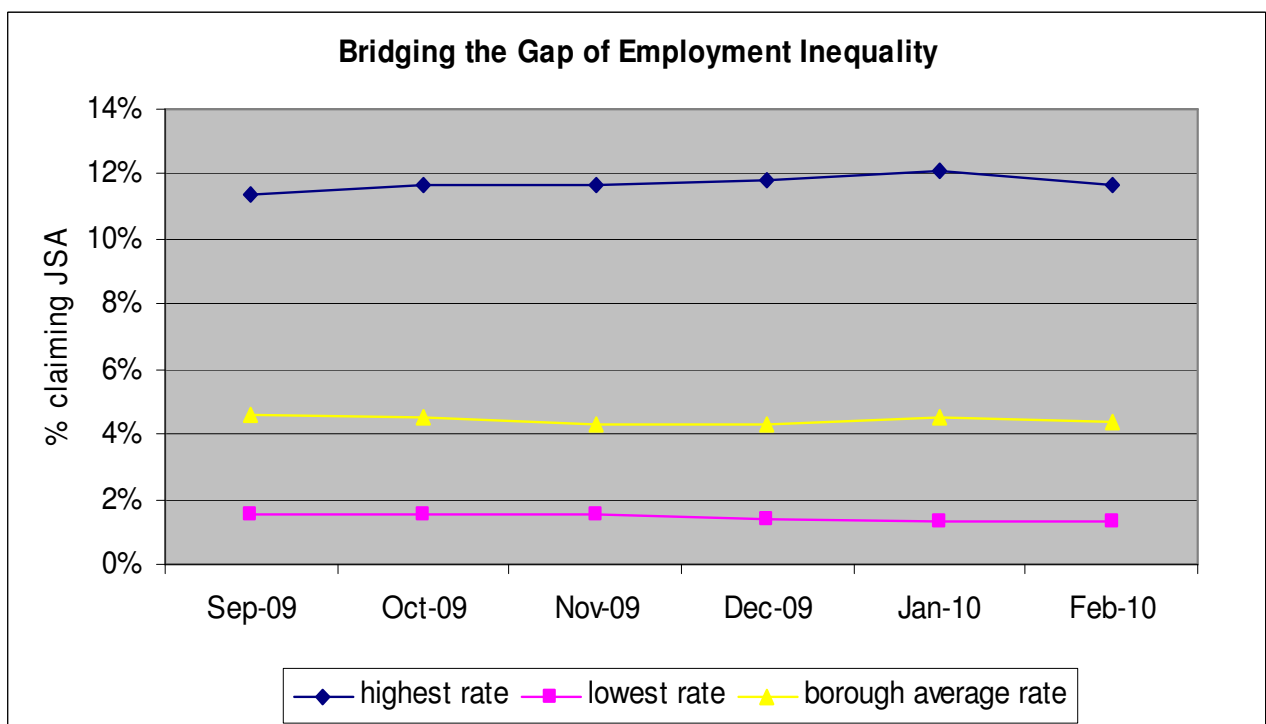
There has been an increase of 279 notified job vacancies since January 2010, leaving a job vacancy total for February 2010 of 918. This figure for notified vacancies is the fifth lowest monthly figure recorded in the last two years. The graph below shows the number of vacancies over a two year period, with January 2009 showing the smallest number of vacancies and May 2009 showing the largest amount.

Job Vacancies notified to Job Centre Plus over the last 2 years



Solihull – Bridging the Gap of Employment Inequality

The chart and data below reflect the highest and lowest claimant unemployment rates across Solihull's electoral wards on a rolling six monthly basis. The data is not ward specific; it is designed to use the highest and lowest rates to determine the monthly trend of the employment gap which exists in Solihull.



The employment inequality gap in February 2010 decreased by 0.4% to 10.4 %.

Employment Inequality Gap, February 2010	10.4 % ▼
---	-----------------

Worklessness Rates in Solihull

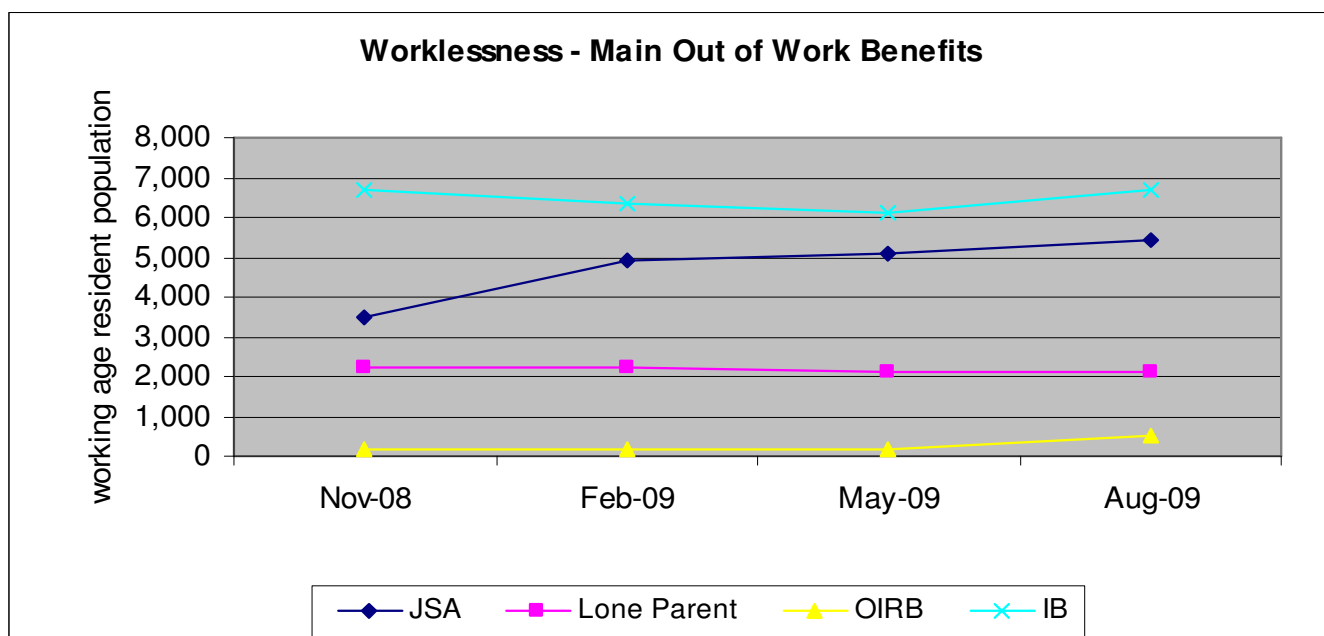
The worklessness figure for Solihull has been calculated using Department of Work and Pensions figures accessed through NOMIS. In line with Government guidance we use the following data to determine the worklessness rate:

Working age resident population claiming:

- Job Seekers Allowance(JSA),
- Lone Parents on Income Support (LPIS),
- Incapacity Benefit (IB)
- Others on Income Related benefits (OIRB).

This data is updated quarterly with a six month time lag.

The graph below shows the number of people in Solihull claiming out of work benefits



Reporting Unemployment

There are various methods that are used to calculate and report the number of people not in employment. The robustness of this data varies and figures reported in the media can vary greatly depending on the source of the data. Worklessness data is calculated as detailed above and contains information derived from a number of benefit claimant groups. Unemployment data can be calculated using the Job Seekers Allowance (JSA) Claimant Count or the Labour Force Survey (which uses the internationally agreed International Labour Organisation definition of unemployment) Claimant Count figures consist only of those who are in receipt of job seekers allowance. ILO/LFS figures include all persons of working age who are not in employment but would like to work. Below are the unemployment figures for the West Midlands (as the LFS is not available at Solihull level) using the two methods.

West Midlands		
Date	ILO/LFS	Claimant Count
Feb-Apr 2009	9.8	5.3
Mar-May 2009	10.5	5.4
Apr-Jun 2009	10.9	5.4
May-Jul 2009	10.8	5.4
Jun-Aug 2009	10.8	5.4
Jul-Sep 2009	10.4	5.5
Aug-Oct 2009	10.5	5.5
Sep-Nov 2009	10.0	5.5
Oct-Dec 2009	9.8	5.4
Nov-Jan 2010	9.9	5.4

West Midlands Unemployment Figures: JSA Claimant Count and ILO/LFS
12 month comparison

