



Solihull
METROPOLITAN
BOROUGH COUNCIL

Solihull

Unemployment Briefing



Community & Economic
Regeneration Division

January 2010

Unemployment Briefing: January 2010

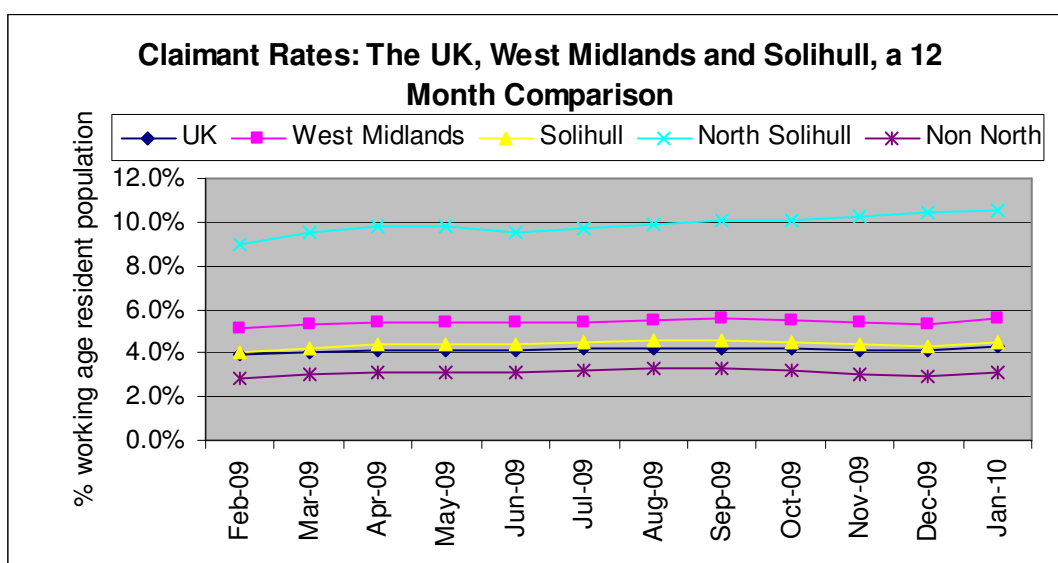
The standard measure of unemployment in the Borough of Solihull is the 'claimant count'; this count measures only those people who are claiming Jobseekers Allowance (JSA). This analysis of the claimant count is derived from the administrative records of Jobcentre Plus.

The Claimant Count – Solihull in a National, Regional and Local Context.

National Context

▲ Increase ▼ Decrease ◀ No change (compared to the previous month's figure)

	Male No's	Male Rate %	Female No's	Female Rate %	Total No's	Total Rate %
U.K	1,213,439	6.1	440,586	2.4	1,654,025	4.3 ▲
West Midlands	136,026	7.9	47,393	3.0	183,419	5.6 ▲
Solihull	4,009	6.3	1,497	2.5	5,506	4.5 ▲
Non North Wards	2,192	4.3	875	1.9	3,067	3.1 ▲
North Solihull	1,821	15.7	625	5.4	2,446	10.5 ▲



UK / Regional Context

Government Office Region	Number	Rate
East	124,473	3.6 ▲
East Midlands	115,218	4.2 ▲
London	225,965	4.4 ▲
North East	90,769	5.7 ▲
North West	205,916	4.9 ▲
Northern Ireland	56,170	5.1 ▲
Scotland	144,870	4.5 ▲
South East	162,595	3.2 ▲
South West	97,758	3.1 ▲
Wales	83,174	4.6 ▲
West Midlands	183,419	5.6 ▲
Yorkshire and The Humber	163,698	5.0 ▲
United Kingdom	1,654,025	4.3 ▲

Figures recorded for January 2010 show that the claimant count rate in all 12 UK Government Office Regions increased. The highest increase of 0.4% was recorded in Scotland and the lowest of 0.1% in London. The North East remains the region with the highest rate of 5.7%. The West Midlands rate

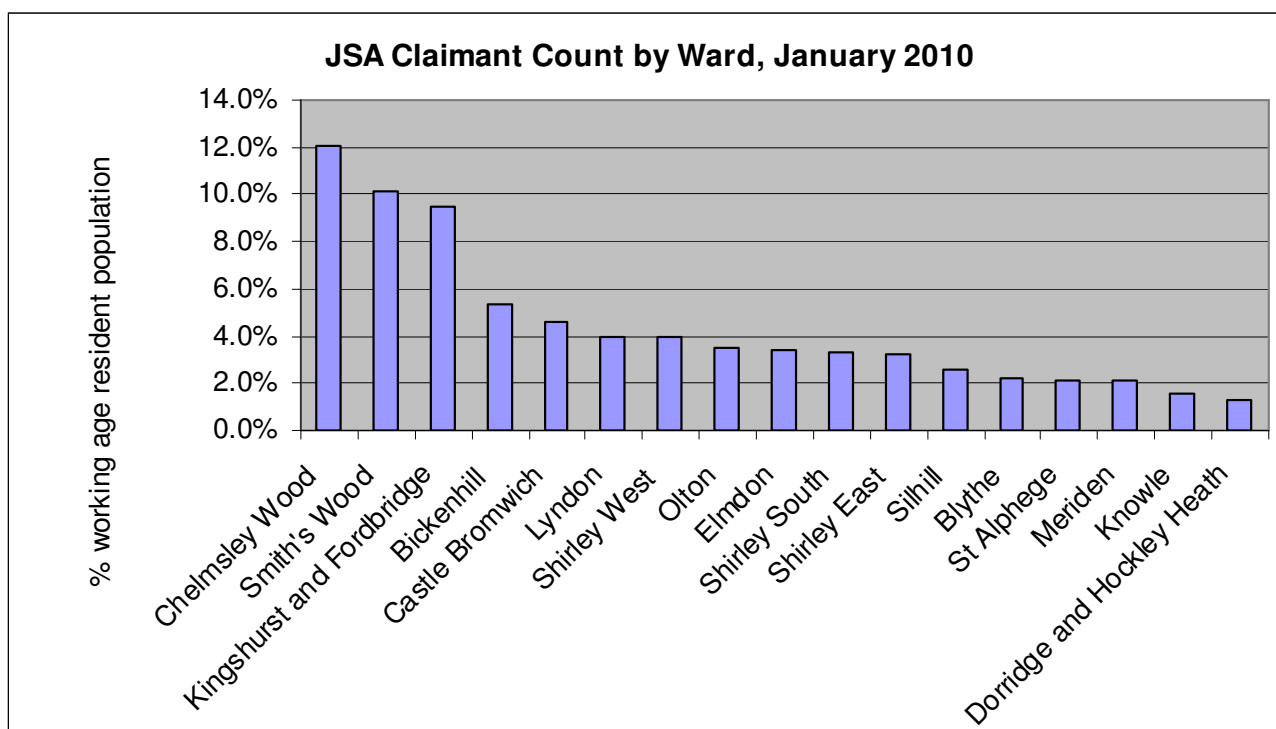
increased by 0.3% after three consecutive decreases, however the West Midlands remains the region with the second highest claimant count rate.

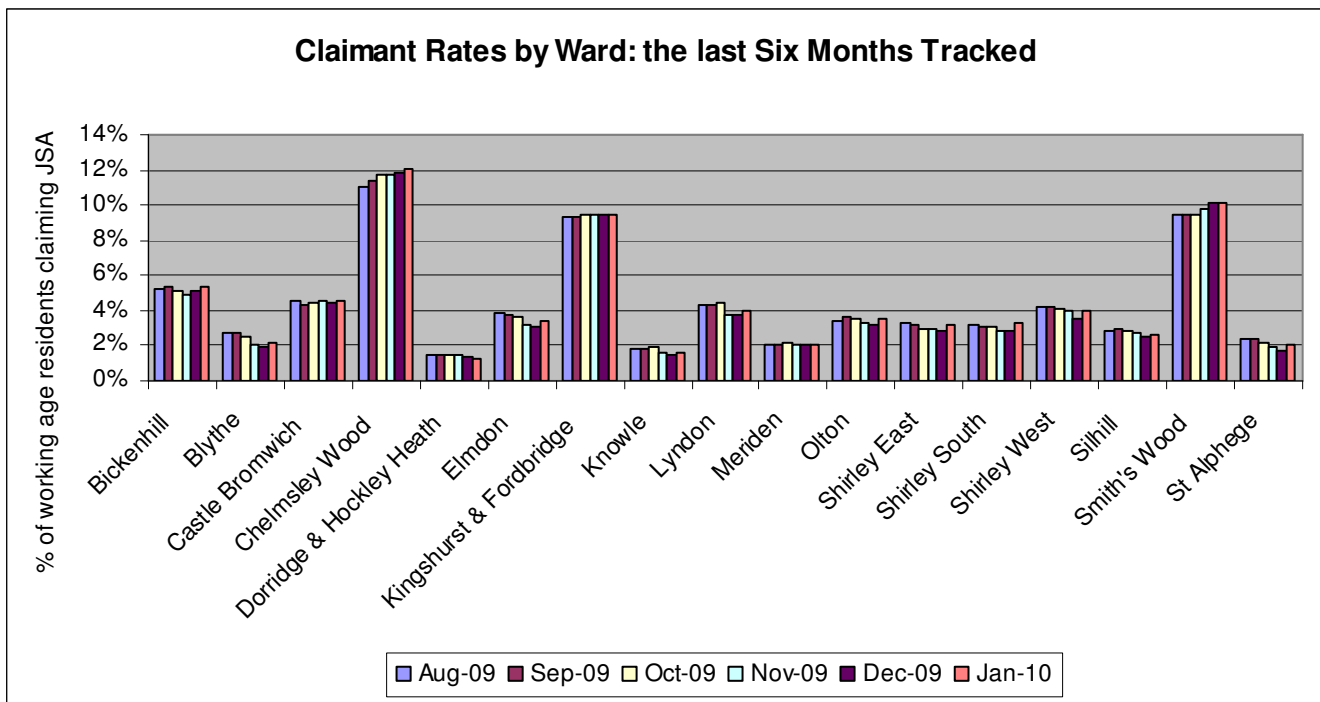
Local Context

The numbers of people unemployed for each ward are based upon the number of Job Seeker's Allowance claims derived from the administrative records of Jobcentre Plus. Claimant count rates have been calculated using Office for National Statistics Mid-2007 Population Estimates for 2009 Wards in England and Wales.

The claimant count in Solihull's wards (numbers and rates)

	Male Numbers	Male Rates %	Female Numbers	Female Rates %	Total Numbers	Total Rates %
Bickenhill	299	7.5	105	2.9	404	5.3 ▲
Blythe	127	3.0	52	1.3	179	2.2 ▲
Castle Bromwich	242	6.3	92	2.7	334	4.6 ▲
Chelmsley Wood	707	18.6	201	5.4	908	12.1 ▲
Dorridge & Hockley Heath	60	1.9	22	0.7	82	1.3 ▼
Elmdon	168	4.6	72	2.1	240	3.4 ▲
Kingshurst and Fordbridge	546	13.8	202	5.1	748	9.5 ▲
Knowle	59	1.9	36	1.4	95	1.6 ▲
Lyndon	223	5.6	88	2.3	311	4.0 ▲
Meriden	98	2.8	41	1.3	139	2.1 ◀
Olton	174	4.8	65	2.0	239	3.5 ▲
Shirley East	137	4.2	72	2.3	209	3.2 ▲
Shirley South	183	4.9	50	1.5	233	3.3 ▲
Shirley West	200	5.4	86	2.5	286	4.0 ▲
Silhill	124	3.8	36	1.2	160	2.6 ▲
Smith's Wood	568	14.7	222	5.6	790	10.1 ◀
St Alphege	98	2.5	58	1.6	156	2.1 ▲





Unemployment figures released for January 2010 show that since the December 2009 claimant figure release, the unemployment rate in Solihull increased in fourteen wards, decreased in one ward and remained the same in two wards. St Alphege and Shirley South recorded the highest claimant rate increase (0.4%), Dorridge and Hockley Heath recorded the only claimant rate decrease (0.1%). The total number of JSA claimants in Solihull increased by 255 to 5,506.

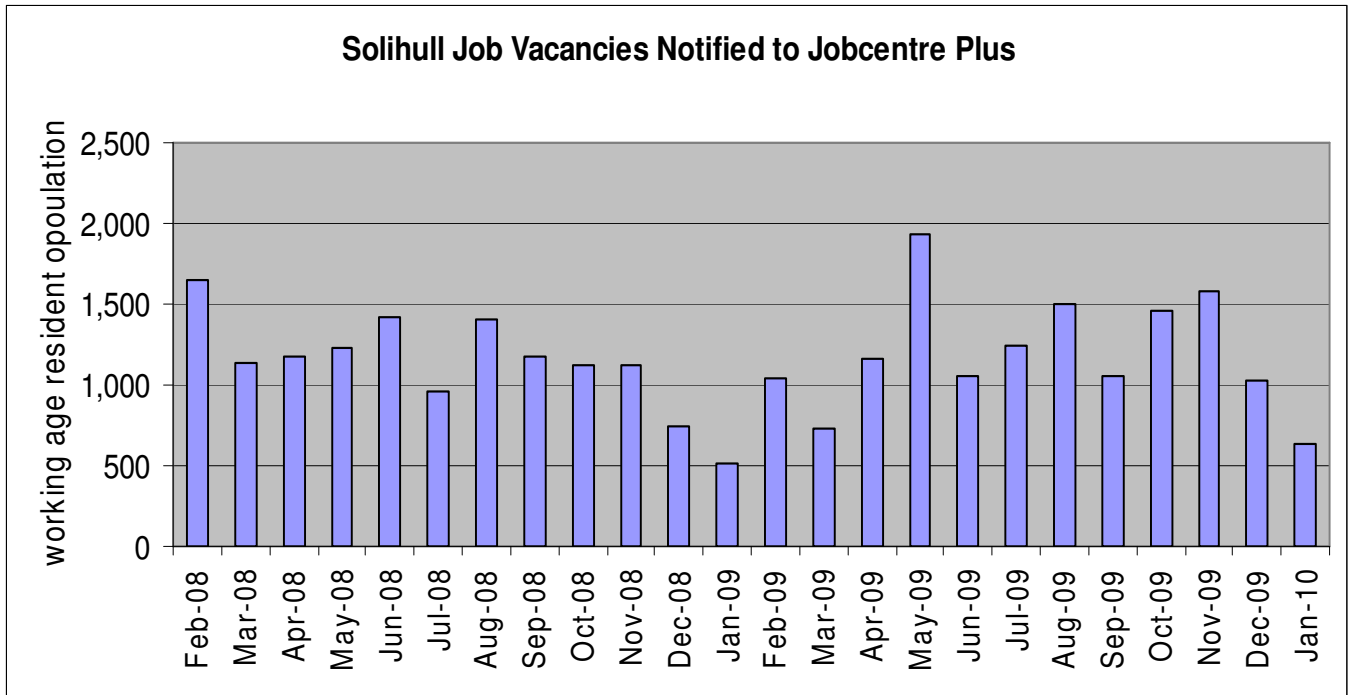
Solihull Job Vacancies notified to Jobcentre Plus

Data on the number of vacancies notified to Jobcentre Plus is released on a monthly basis. The number of recorded job seekers divided by the number of notified vacancies per month indicates the person to job vacancy ratio. The person per job ratio in January 2010 increased to 8.62:1 from the December 2009 figure of 5.14: 1.

JSA claimants per job vacancy ratio, January 2010		
Job Seekers	Vacancies	Job Seekers: Vacancy Ratio
5,506	639	8.62:1

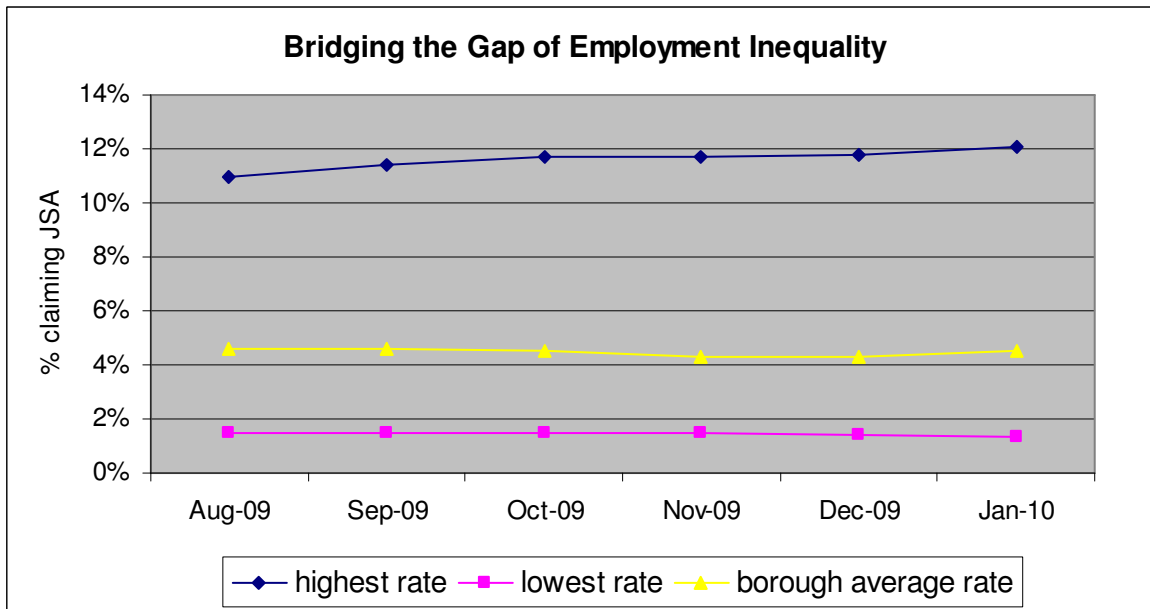
There has been a decrease of 382 notified job vacancies since December 2009, leaving a job vacancy total for January 2010 of 639. This figure for notified vacancies is the second lowest monthly figure recorded in the last two years. The graph below shows the number of vacancies over a two year period, with January 2009 showing the smallest number of vacancies and May 2009 showing the largest amount.

Job Vacancies notified to Job Centre Plus over the last 2 years



Solihull – Bridging the Gap of Employment Inequality

The chart and data below reflect the highest and lowest claimant unemployment rates across Solihull’s electoral wards on a rolling six monthly basis. The data is not ward specific; it is designed to use the highest and lowest rates to determine the monthly trend of the employment gap which exists in Solihull.



The employment inequality gap in January 2010 increased by 0.4% to 10.8 %.

Employment Inequality Gap, January 2010	10.8 % ▲
--	-----------------

Worklessness Rates in Solihull

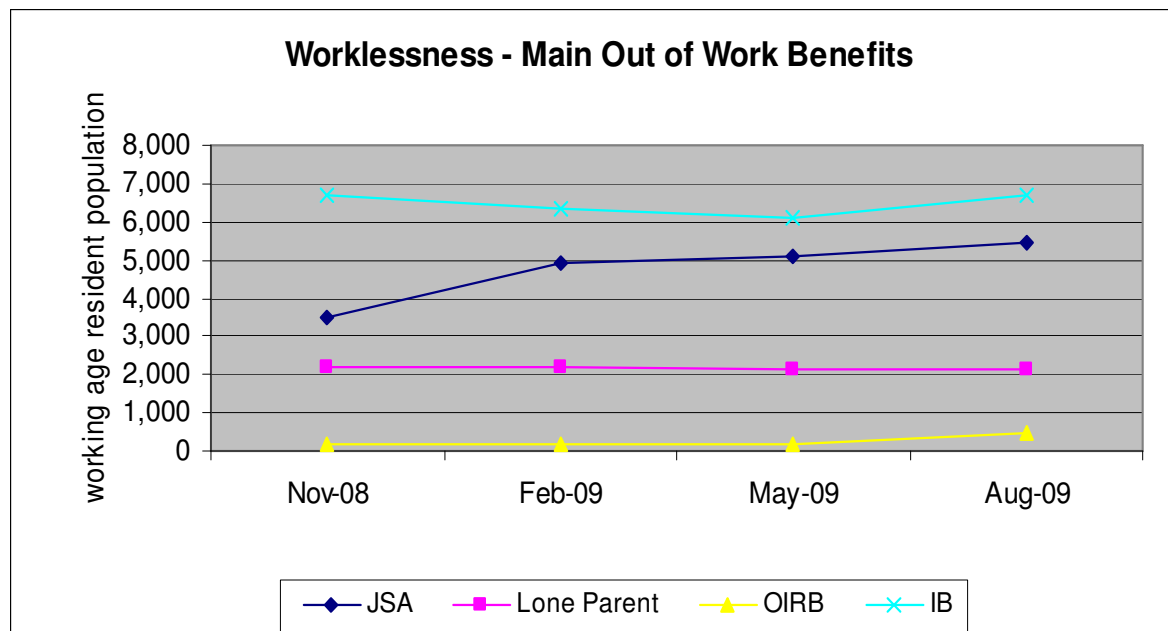
The worklessness figure for Solihull has been calculated using Department of Work and Pensions figures accessed through NOMIS. In line with Government guidance we use the following data to determine the worklessness rate:

Working age resident population claiming:

- Job Seekers Allowance(JSA),
- Lone Parents on Income Support (LPIS),
- Incapacity Benefit (IB)
- Others on Income Related benefits (OIRB).

This data is updated quarterly with a six month time lag.

The graph below shows the number of people in Solihull claiming out of work benefits



Reporting Unemployment

There are various methods that are used to calculate and report the number of people not in employment. The robustness of this data varies and figures reported in the media can vary greatly depending on the source of the data. Worklessness data is calculated as detailed above and contains information derived from a number of benefit claimant groups. Unemployment data can be calculated using the Job Seekers Allowance (JSA) Claimant Count or the Labour Force Survey (which uses the internationally agreed International Labour Organisation definition of unemployment) Claimant Count figures consist only of those who are in receipt of job seekers allowance. ILO/LFS figures include all persons of working age who are not in employment but would like to work. Below are the unemployment figures for the West Midlands (as the LFS is not available at Solihull level) using the two methods.

West Midlands		
Date	ILO / LFS	Claimant Count
Sep-Nov 2008	7.5	3.5%
Oct-Dec 2008	8.2	3.7%
Nov-Jan 2008/09	8.5	4.1%
Dec-Feb 2008/09	8.9	4.5%
Jan-Mar 2009	9.6	5%
Feb-Apr 2009	9.7	5.3%
Mar-May 2009	10.5	5.4%
Apr-Jun 2009	10.8	5.4%
May-Jul 2009	10.8	5.4%
Jun-Aug 2009	10.8	5.4%
Jul-Sep 2009	10.4	5.5%
Oct – Dec 2009	9.8	4.4%

West Midlands Unemployment Figures: JSA Claimant Count and ILO/LFS
12 month comparison

