



Solihull
METROPOLITAN
BOROUGH COUNCIL

Solihull

Unemployment Briefing



Community & Economic
Regeneration Division

November 2009

Unemployment Briefing: November 2009

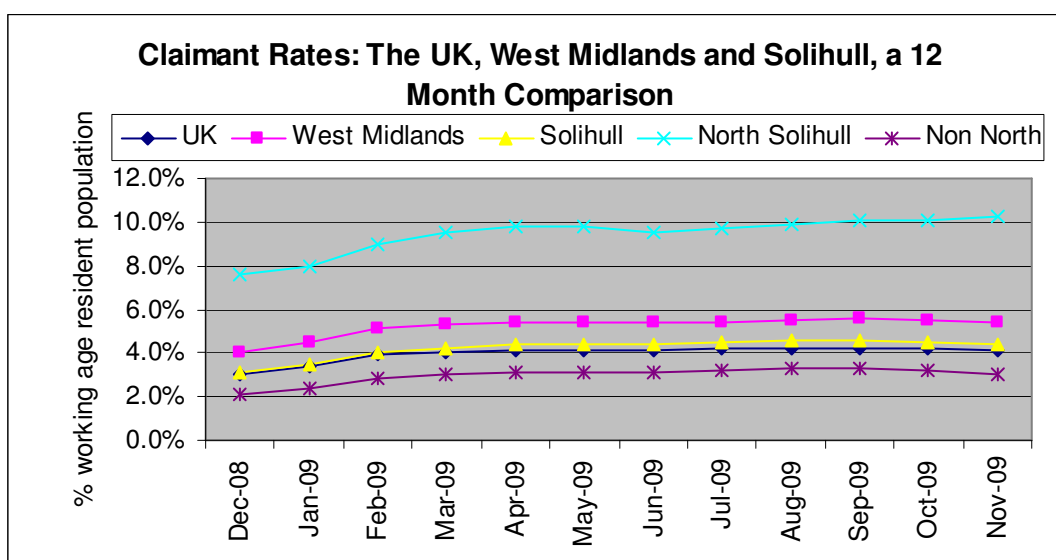
The standard measure of unemployment in the Borough of Solihull is the 'claimant count'; this count measures only those people who are claiming Jobseekers Allowance (JSA). This analysis of the claimant count is derived from the administrative records of Jobcentre Plus.

The Claimant Count – Solihull in a National, Regional and Local Context.

National Context

▲ Increase ▼ Decrease ◀ No change (compared to the previous month's figure)

	Male No's	Male Rate %	Female No's	Female Rate %	Total No's	Total Rate %
U.K	1,143,015	5.7	426,431	2.4	1,569,446	4.1 ▼
West Midlands	130,232	7.5	46,464	3.0	176,696	5.4 ▼
Solihull	3,846	6.1	1,486	2.5	5,332	4.4 ▼
Non North Wards	2,092	4.1	852	1.8	2,944	3.0 ▼
North Solihull	1,757	15.2	637	5.5	2,394	10.3 ▲



UK / Regional Context

Government Office Region	Number	Rate
East	116,854	3.4 ◀
East Midlands	109,902	4.0 ▼
London	222,731	4.4 ▼
North East	84,642	5.3 ◀
North West	195,741	4.6 ▼
Northern Ireland	52,539	4.8 ◀
Scotland	131,872	4.1 ▲
South East	154,697	3.0 ◀
South West	91,599	2.9 ◀
Wales	77,896	4.3 ◀
West Midlands	176,696	5.4 ▼
Yorkshire and The Humber	154,277	4.8 ◀
United Kingdom	1,569,446	4.1 ▼

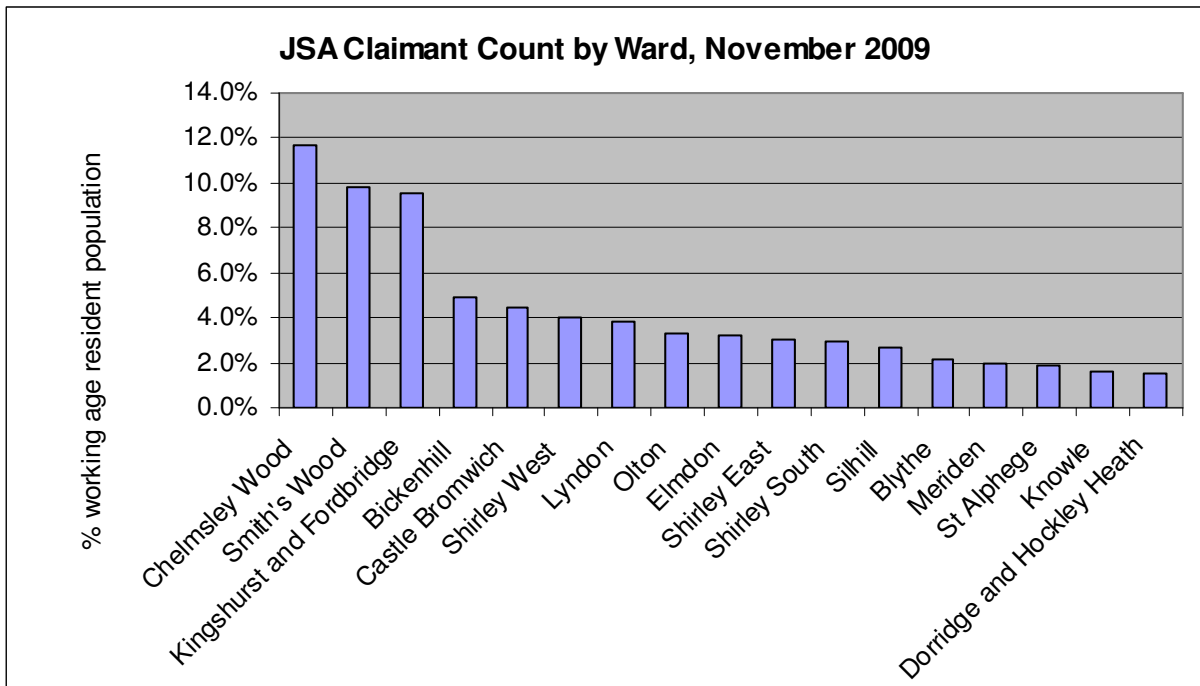
Within the UK Government Office regions, Scotland recorded the only regional increase (0.1%) in the claimant count rate during November. Seven regions' claimant rates stayed the same as October and four regions had claimant rates which decreased by 0.1%. The West Midlands remains the region with the highest claimant count rate of 5.4%, a decrease of 0.1% for the second consecutive month.

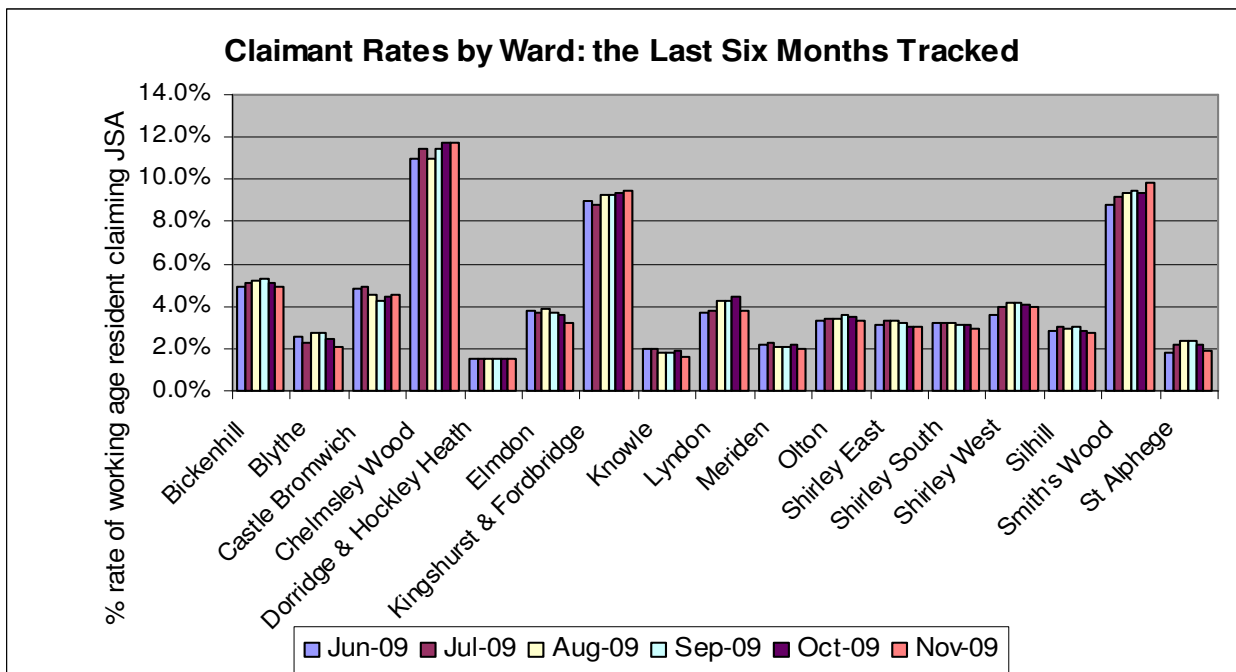
Local Context

The numbers of people unemployed for each ward are based upon the number of Job Seeker's Allowance claims derived from the administrative records of Jobcentre Plus. Claimant count rates have been calculated using Office for National Statistics Mid-2007 Population Estimates for 2009 Wards in England and Wales.

The claimant count in Solihull's wards (numbers and rates)

	Male Numbers	Male Rates %	Female Numbers	Female Rates %	Total Numbers	Total Rates %
Bickenhill	276	6.9	97	2.7	373	4.9 ▼
Blythe	117	2.7	58	1.5	175	2.1 ▼
Castle Bromwich	239	6.2	90	2.6	329	4.5 ▲
Chelmsley Wood	664	17.5	215	5.8	879	11.7 ▲
Dorridge & Hockley Heath	72	2.2	21	0.7	93	1.5 ▲
Elmdon	155	4.2	74	2.2	229	3.2 ▼
Kingshurst and Fordbridge	548	13.9	203	5.1	751	9.5 ▲
Knowle	64	2.0	29	1.1	93	1.6 ▼
Lyndon	207	5.2	87	2.3	294	3.8 ▼
Meriden	88	2.5	44	1.4	132	2.0 ▼
Olton	169	4.6	60	1.9	229	3.3 ▼
Shirley East	122	3.7	72	2.3	194	3.0 ▲
Shirley South	157	4.2	47	1.4	204	2.9 ▼
Shirley West	198	5.3	87	2.5	285	4.0 ▼
Silhill	131	4.0	37	1.2	168	2.7 ▼
Smith's Wood	545	14.1	219	5.5	764	9.8 ▲
St Alphege	97	2.4	49	1.4	146	1.9 ▼





Unemployment figures released for November 2009 show that since the October 2009 claimant figure release, the unemployment rate in Solihull increased in three wards, decreased in eleven wards and remained the same in three wards. Smith's Wood recorded the highest claimant rate increase (0.4%), Lyndon recorded the highest claimant rate decrease (0.6%). The total number of JSA claimants in Solihull fell by 171 to 5,332.

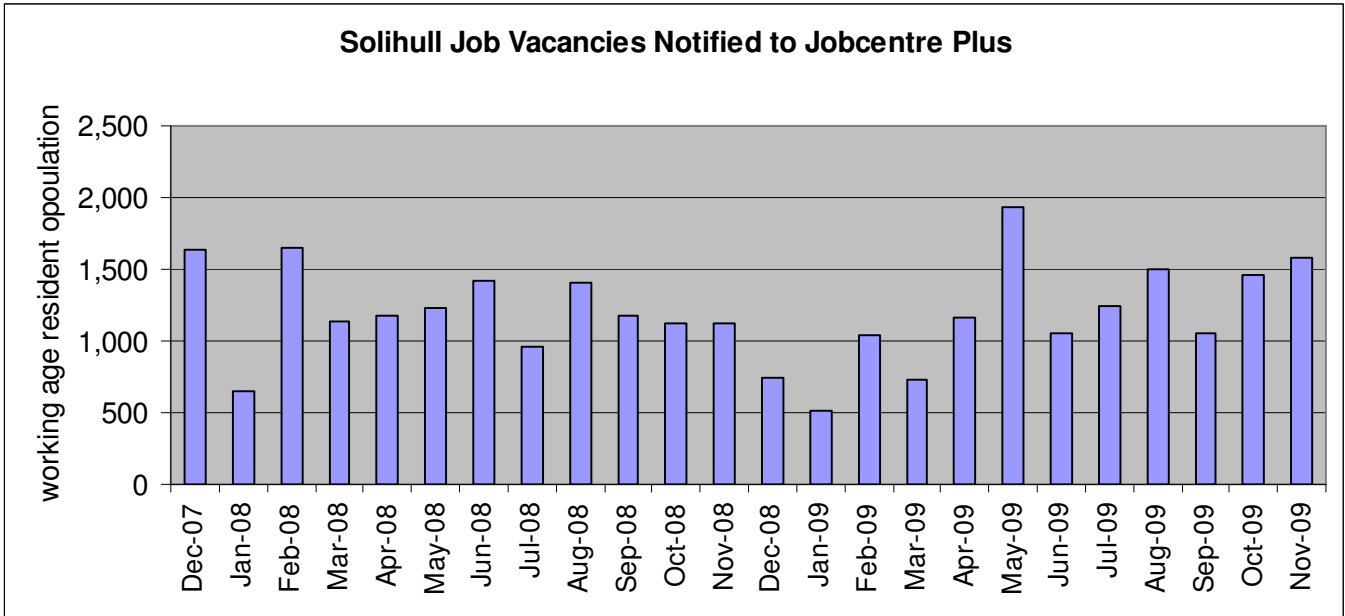
Solihull Job Vacancies notified to Jobcentre Plus

Data on the number of vacancies notified to Jobcentre Plus is released on a monthly basis. The number of recorded job seekers divided by the number of notified vacancies per month indicates the person to job vacancy ratio. The person per job ratio in November 2009 decreased to 3.38 :1 from the October 2009 figure of 3.78 : 1.

JSA claimants per job vacancy ratio, November 2009		
Job Seekers	Vacancies	Job Seekers: Vacancy Ratio
5,332	1,567	3.38: 1 ▼

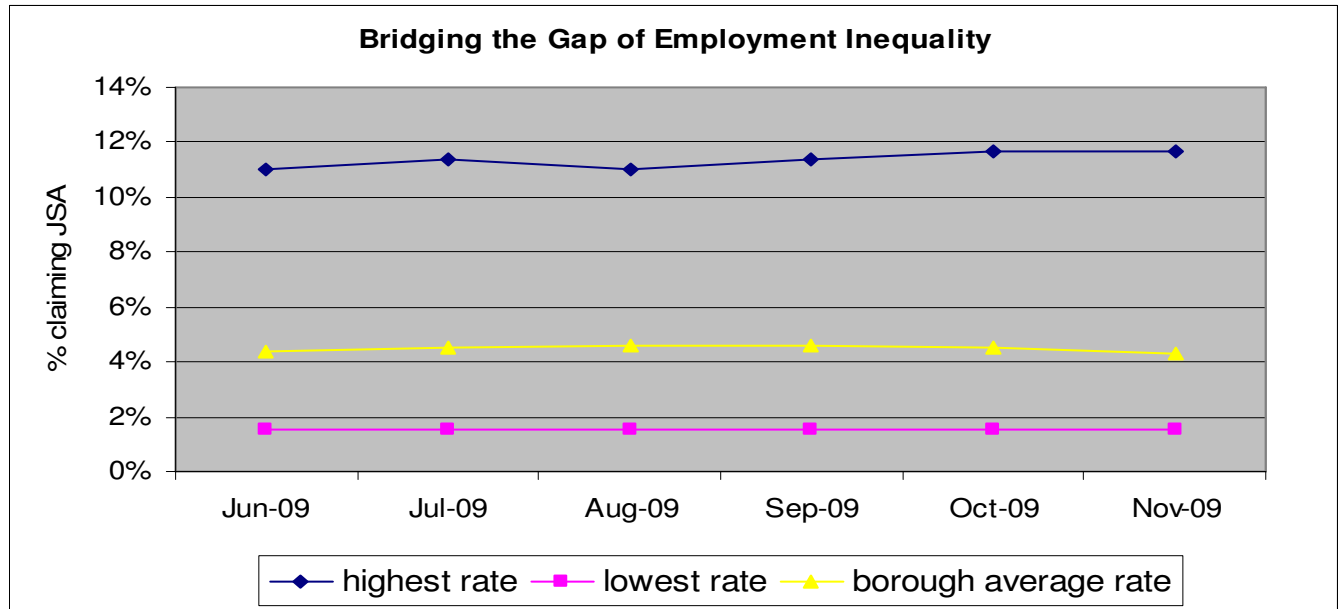
There has been an increase of 119 notified job vacancies since October 2009, leaving a job vacancy total for November of 1,576. The graph below shows the number of vacancies over a two year period, with January 2009 showing the smallest number of vacancies and May 2009 showing the largest amount.

Job Vacancies notified to Job Centre Plus over the last 2 years



Solihull – Bridging the Gap of Employment Inequality

The chart and data below reflect the highest and lowest claimant unemployment rates across Solihull’s electoral wards on a rolling six monthly basis. The data is not ward specific; it is designed to use the highest and lowest rates to determine the monthly trend of the employment gap which exists in Solihull.



The employment inequality gap for November remains at 10.2 %, the same as the October figure.

Employment Inequality Gap, November 2009	10.2% ◀
-------------------------------------------------	----------------

Worklessness Rates in Solihull

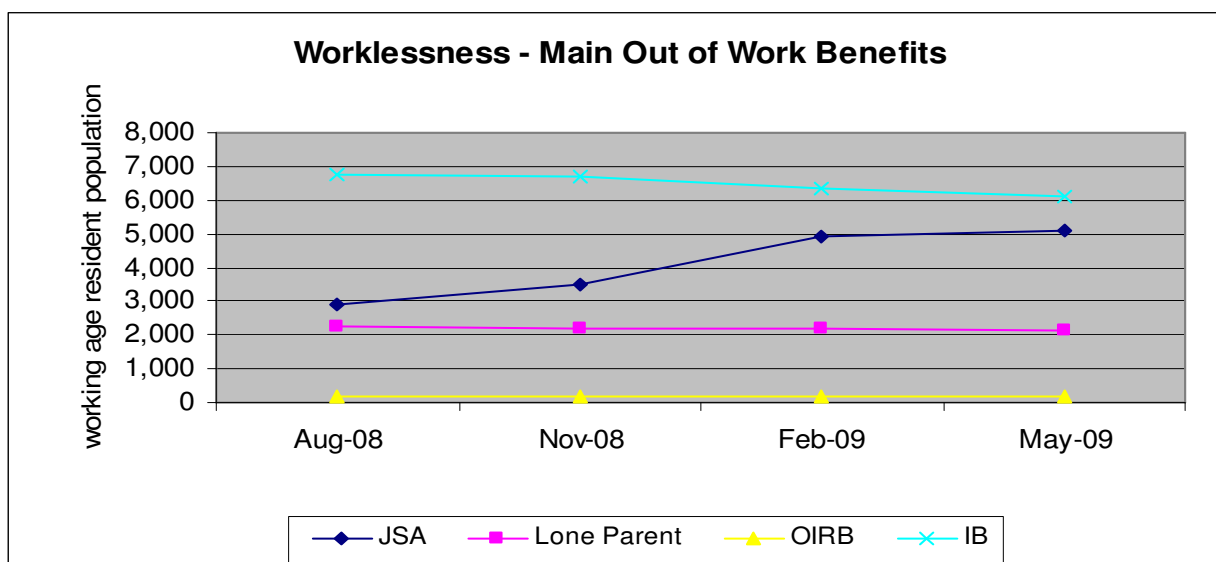
The worklessness figure for Solihull has been calculated using Department of Work and Pensions figures accessed through NOMIS. In line with Government guidance we use the following data to determine the worklessness rate:

Working age resident population claiming:

- Job Seekers Allowance(JSA),
- Lone Parents on Income Support (LPIS),
- Incapacity Benefit (IB)
- Others on Income Related benefits (OIRB).

This data is updated quarterly with a six month time lag.

The graph below shows the number of people in Solihull claiming out of work benefits.



The quarterly total of the above benefit claims divided by the borough working age resident population gives a borough wide worklessness rate for May 2009 of **9.4%**. Updated figures for August 2009 will be released in February 2010.

Reporting Unemployment

There are various methods that are used to calculate and report the number of people not in employment. The robustness of this data varies and figures reported in the media can vary greatly depending on the source of the data. Worklessness data is calculated as detailed above and contains information derived from a number of benefit claimant groups. Unemployment data can be calculated using the Job Seekers Allowance (JSA) Claimant Count or the Labour Force Survey (which uses the internationally agreed International Labour Organisation definition of unemployment) Claimant Count figures consist only of those who are in receipt of job seekers allowance. ILO/LFS figures include all persons of working age who are not in employment but would like to work. Below are the unemployment figures for the West Midlands (as the LFS is not available at Solihull level) using the two methods.

West Midlands		
Date	ILO / LFS	Claimant Count
Aug-Oct 2008	7.4	3.4%
Sep-Nov 2008	7.5	3.5%
Oct-Dec 2008	8.2	3.7%
Nov-Jan 2009	8.5	4.1%
Dec-Feb 2009	8.9	4.5%
Jan-Mar 2009	9.6	5%
Feb-Apr 2009	9.7	5.3%
Mar-May 2009	10.5	5.4%
Apr-Jun 2009	10.8	5.4%
May-Jul 2009	10.8	5.4%
Jun-Aug 2009	10.8	5.4%
Jul-Sep 2009	10.4	5.5%

West Midlands Unemployment Figures: JSA Claimant Count and ILO/LFS
12 month comparison

