



Solihull
METROPOLITAN
BOROUGH COUNCIL

Solihull

Unemployment Briefing



Community & Economic
Regeneration Division

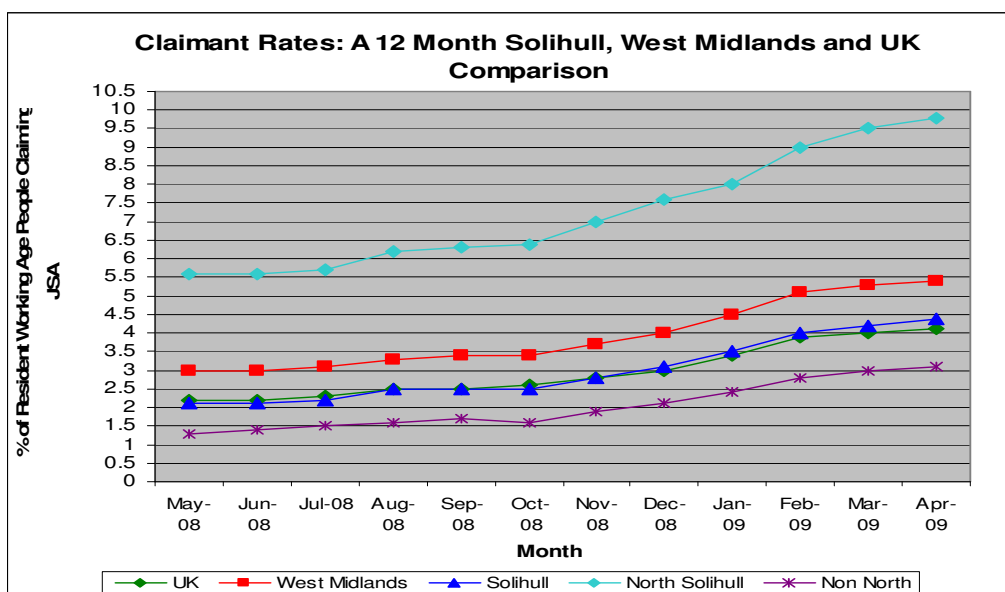
April 2009

Unemployment Briefing: April 2009

The standard measure of unemployment in the Borough of Solihull is the 'claimant count'; this count measures only those people who are claiming Jobseekers Allowance (JSA). This analysis of the claimant count is derived from the administrative records of Jobcentre Plus.

	Male No's	Male Rate %	Female No's	Female Rate %	Total No's	Total Rate %
U.K	1,156,895	5.8	400,721	2.2	1,557,616	4.1 ▲
West Midlands	133,927	7.8	44,181	2.8	178,108	5.4 ▲
Solihull	3,880	6.2	1,461	2.5	5,341	4.4 ▲
Non North Wards	2,176	4.3	871	1.9	3,047	3.1 ▲
North Solihull	1,709	14.7	591	5.0	2,300	9.8 ▲

▲ Increase ▼ Decrease ◀ No change (compare to the previous month's figure)



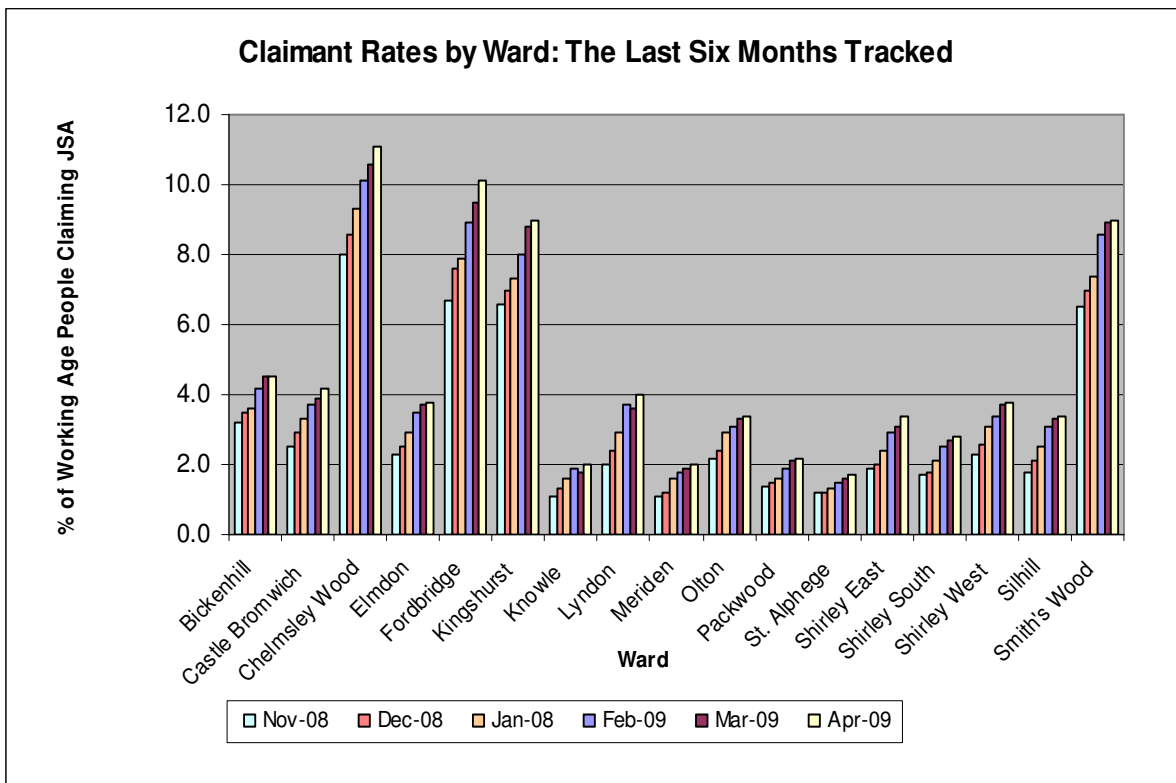
New Ward Data for Solihull

The numbers of people unemployed for each ward (new ward boundaries as of 2004) are based upon the number of Job Seeker's Allowance claims derived from the administrative records of Jobcentre Plus. However, the rates have been calculated using estimated working age population figures from the 2001 census as census data for the new ward boundaries is not yet available, therefore the rates for each ward may not be entirely accurate.

	Male Numbers	Male Rates %	Female Numbers	Female Rates %	Total Numbers	Total Rates %
Bickenhill	276	7.4	85	2.4	361	4.9 ▼
Blythe	142	3.8	71	2.0	213	3.0 ▲
Castle Bromwich	223	5.9	83	2.3	306	4.2 ▲
Chelmsley Wood	641	16.9	210	5.6	851	11.3 ▲
Dorridge & Hockley Heath	71	2.4	33	1.2	104	1.8 ▲
Elmdon	175	4.7	81	2.3	256	3.5 ▲
Kingshurst and Fordbridge	550	14.5	176	4.6	726	9.5 ▲
Knowle	88	2.7	33	1.1	121	1.9 ▲
Lyndon	224	5.6	85	2.3	309	4.1 ▲
Meriden	93	2.5	41	1.2	134	1.9 ▲
Olton	176	5.1	53	1.7	229	3.5 ▲
Shirley East	141	3.4	71	1.9	212	2.7 ▲
Shirley South	166	4.8	61	1.9	227	3.4 ▲
Shirley West	202	5.7	70	2.2	272	4.0 ▲
Silhill	113	3.1	66	1.9	179	2.5 ▼
Smith's Wood	518	17.3	205	7.4	723	12.6 ◀
St Alphege	88	2.3	33	0.8	121	1.6 ◀

Pre 2004 Ward Boundary Data

	Male Numbers	Male Rates %	Female Numbers	Female Rates %	Total Numbers	Total Rates %
Bickenhill	296	6.4	103	2.4	399	4.5 ◀
Castle Bromwich	223	5.8	83	2.4	306	4.2 ▲
Chelmsley Wood	542	16.6	183	5.6	725	11.1 ▲
Elmdon	156	5.4	55	2.0	211	3.8 ▲
Fordbridge	406	15.1	127	4.9	533	10.1 ▲
Kingshurst	318	13.3	107	4.5	425	9.0 ▲
Knowle	87	2.6	35	1.2	122	2.0 ▲
Lyndon	170	5.5	70	2.5	240	4.0 ▲
Meriden	102	2.7	43	1.3	145	2.0 ▲
Olton	176	4.9	53	1.7	229	3.4 ▲
Packwood	147	2.9	67	1.4	214	2.2 ▲
St. Alphege	95	2.1	47	1.2	142	1.7 ▲
Shirley East	158	4.4	76	2.3	234	3.4 ▲
Shirley South	202	3.7	86	1.8	288	2.8 ▲
Shirley West	202	5.5	70	2.0	272	3.8 ▲
Silhill	162	4.3	83	2.4	245	3.4 ▲
Smith's Wood	443	13.3	174	5.0	617	9.0 ▲



Unemployment figures released for April 2009 show that 16 (pre 2004) wards have seen increased unemployment rates during the last month, of which the highest rise of 0.6% was recorded in Fordbridge, taking the ward total to 10.1%. Bickenhill's recorded rate of 4.5% has stayed the same as the March figure.

An unemployment rate of 4.4% was recorded for Solihull as a whole, an increase of 0.2%. This is 1.0% below the West Midlands regional figure of 5.4% and 0.3% higher than the UK figure of 4.1%.

If broken down further into North Solihull (Chelmsley Wood, Smith's Wood, Kingshurst and Fordbridge) and Non North Solihull (all remaining wards) the rate for North Solihull is 9.8%, more than double the UK rate and almost double the West Midlands rate, whilst the Non North rate is 3.1% lower than regional and national trends.