



Solihull
METROPOLITAN
BOROUGH COUNCIL

Solihull

Unemployment Briefing



Community & Economic
Regeneration Division

August 2009

Unemployment Briefing - August 2009

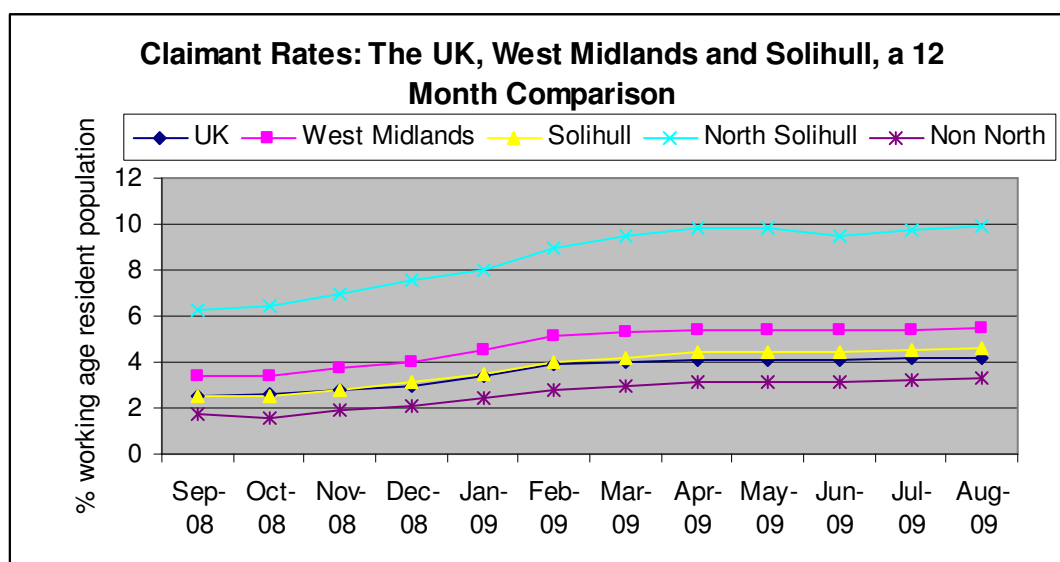
The standard measure of unemployment in the Borough of Solihull is the 'claimant count'; this count measures only those people who are claiming Jobseekers Allowance (JSA). This analysis of the claimant count is derived from the administrative records of Jobcentre Plus.

The Claimant Count – National, Regional and Local Context

National Picture

Key: ▲ Increase ▼ Decrease ◀ No change (compared to the previous month's figure)

	Male No's	Male Rate %	Female No's	Female Rate %	Total No's	Total Rate %
U.K	1,159,762	5.9	442,427	2.4	1,602,189	4.2 ◀
West Midlands	133,682	7.8	47,829	3.1	181,511	5.5 ▲
Solihull	3,955	6.3	1,567	2.7	5,522	4.6 ▲
Non North Wards	2,276	4.4	959	2.0	3,235	3.3 ▲
North Solihull	1,685	14.5	610	5.3	2,295	9.9 ▲



Regional Context

Government Office Region	Number	Rate
East	120,894	3.5 ▲
East Midlands	112,641	4.1 ◀
London	224,393	4.4 ▲
North East	85,372	5.4 ▲
North West	201,172	4.7 ◀
Northern Ireland	53,511	4.9 ▲
Scotland	135,384	4.2 ▲
South East	156,625	3.1 ▲
South West	94,712	3.0 ◀
Wales	79,437	4.4 ▲
West Midlands	181,511	5.5 ▲
Yorkshire and The Humber	156,537	4.9 ▲
United Kingdom	1,602,189	4.2 ◀

Within the UK Government Office regions, 3 regions claimant rates stayed the same as July's figures, 8 had claimant rates which increased by 0.1% and Northern Ireland recorded the largest claimant rate increase of 0.2%. The West Midlands remains the region with the highest claimant count rate of 5.5%.

The UK rate remained at 4.2%; despite the claimant count rising by 29,050 this was not enough to change the overall rate.

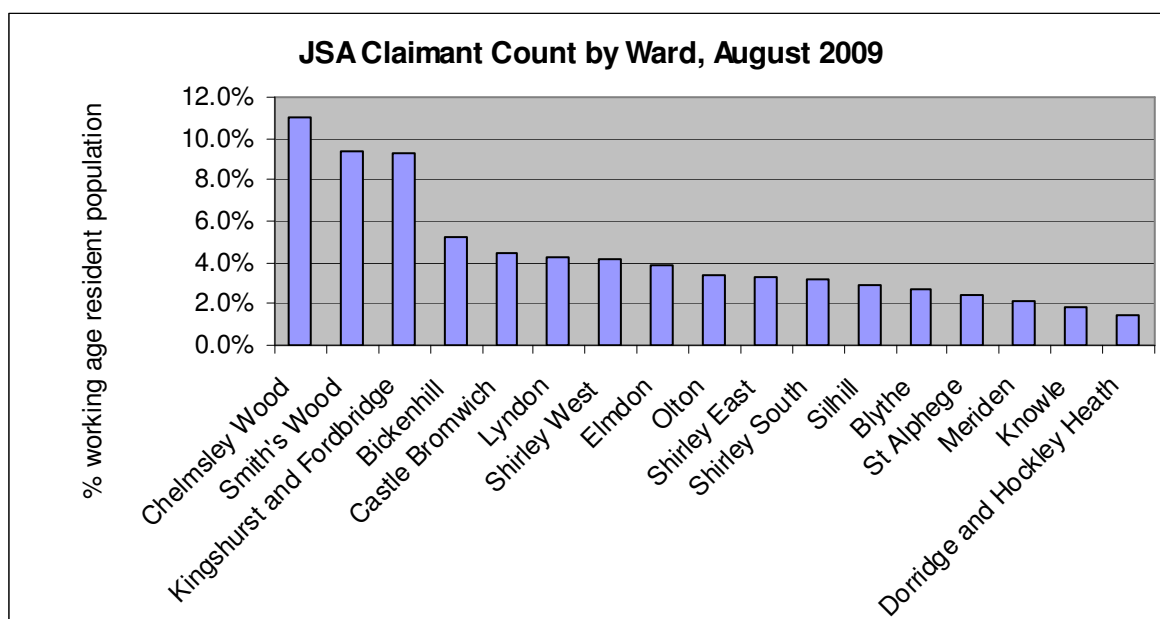
Solihull

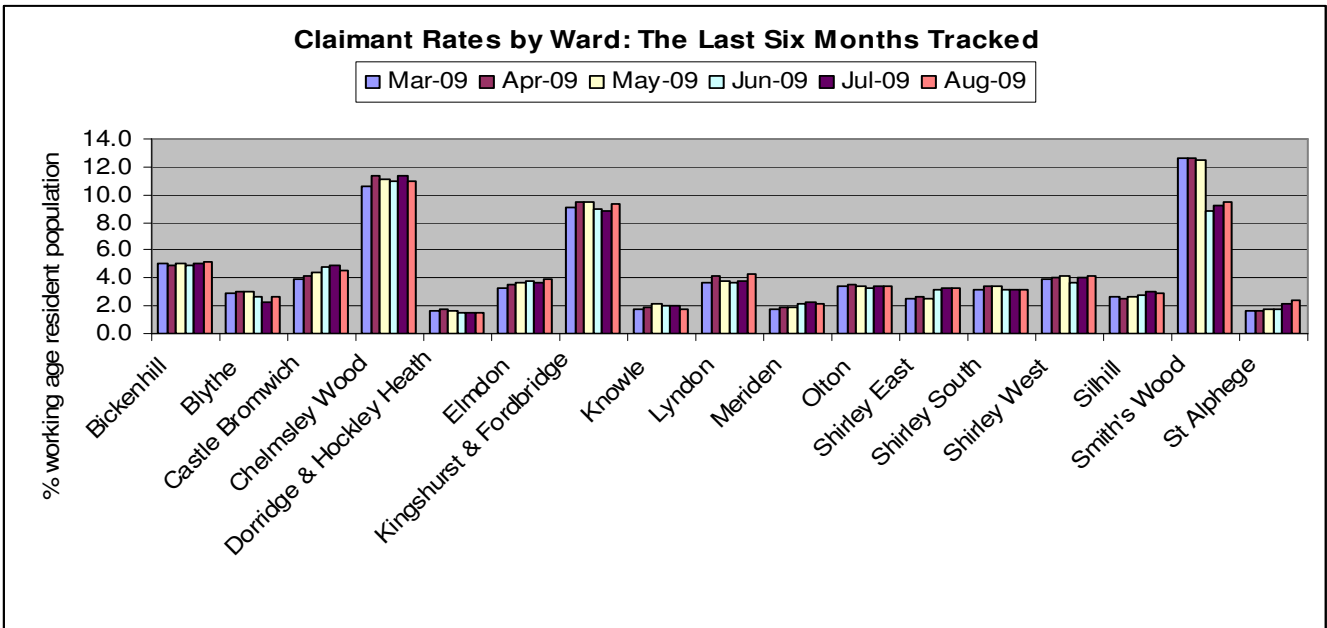
Ward Data for Solihull

The numbers of people unemployed for each ward are based upon the number of Job Seeker's Allowance claims derived from the administrative records of Jobcentre Plus. Claimant count rates have been calculated using the latest ONS Population Estimates (mid-2007).

The Claimant Count in Solihull's Wards

	Male Numbers	Male Rates %	Female Numbers	Female Rates %	Total Numbers	Total Rates %
Bickenhill	297	7.4	96	2.7	393	5.2 ▲
Blythe	145	3.4	77	2.0	222	2.7 ▲
Castle Bromwich	239	6.2	93	2.7	332	4.5 ▼
Chelmsley Wood	628	16.6	198	5.4	826	11.0 ▼
Dorridge & Hockley Heath	73	2.3	21	0.7	94	1.5 ◀
Elmdon	192	5.2	86	2.5	278	3.9 ▲
Kingshurst and Fordbridge	533	13.5	198	5.0	731	9.3 ▲
Knowle	70	2.2	36	1.4	106	1.8 ▼
Lyndon	242	6.1	90	2.4	332	4.3 ▲
Meriden	92	2.6	50	1.6	142	2.1 ▼
Olton	169	4.6	66	2.0	235	3.4 ◀
Shirley East	142	4.3	73	2.3	215	3.3 ◀
Shirley South	171	4.6	57	1.7	228	3.2 ◀
Shirley West	201	5.4	98	2.8	299	4.2 ▲
Silhill	120	3.7	58	2.0	178	2.9 ▼
Smith's Wood	524	13.6	214	5.4	738	9.4 ▲
St Alphege	123	3.1	58	1.6	181	2.4 ▲





Unemployment figures released for August 2009 show that since the July 2009 claimant figure release, the unemployment rate in Solihull increased in 8 wards, decreased in 5 wards and remained the same in 4 wards. Kingshurst & Fordbridge and Lyndon recorded the highest claimant rate increases (0.5%) and Blythe, Castle Bromwich and Chelmsley Wood recorded the highest claimant rate decrease (0.4%). The total number of JSA claimants in Solihull rose by 93 to 5,522.

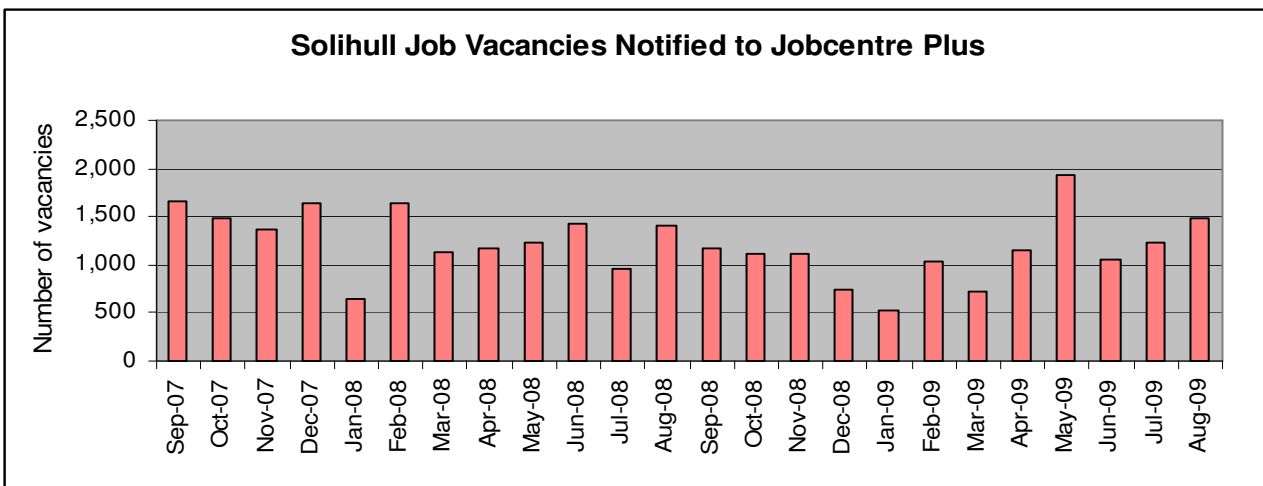
Solihull Job Vacancies Notified to Jobcentre Plus

Data on the number of vacancies notified to Jobcentre Plus is released on a monthly basis. The number of JSA claimants per job ratio in August 2009 was 3.7:1, a decrease from 4.4:1 in July.

JSA Claimant per Job Vacancy Ratio, August 2009		
Job Seekers	Vacancies	Ratio
5,522	1,494	3.7 : 1 ▼

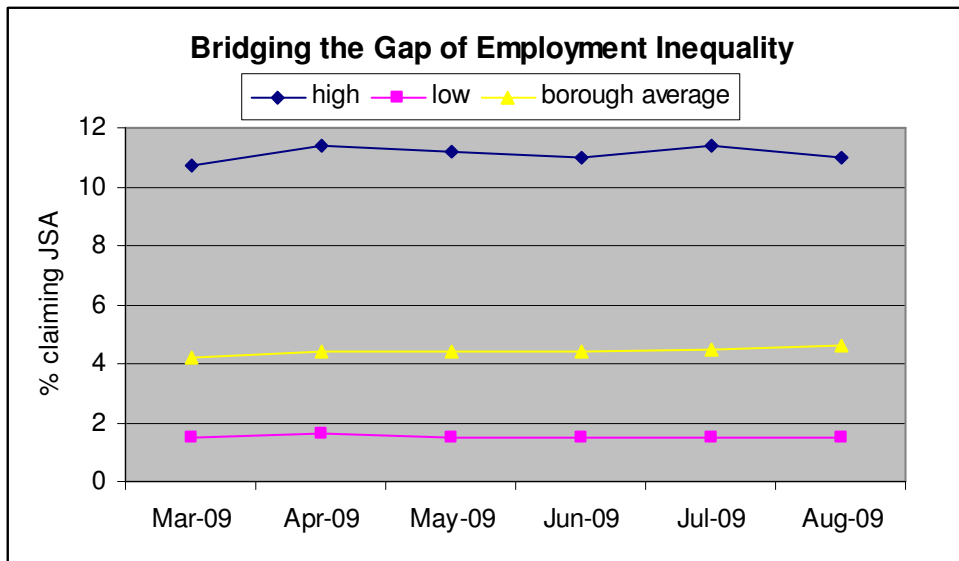
There has been an increase of 256 job vacancies since July 2009, leaving a job vacancy total for August of 1,494. The graph below shows the number of vacancies over a two year period, with January 2009 showing the smallest number of vacancies and May 2009 showing the largest amount.

Job Vacancies Notified to Jobcentre Plus During the Last 12 Months



Solihull – Bridging the Gap of Employment Inequality

The graph below reflects the highest and lowest JSA claimant rates across Solihull’s electoral wards over a rolling six months. The data is not ward specific, it is designed to use the highest and lowest rates to determine the monthly trend of the employment gap which exists in the borough. The employment inequality gap for August 2009 was 9.5%, a decrease from July’s figure of 9.9%.



Worklessness Rates in Solihull

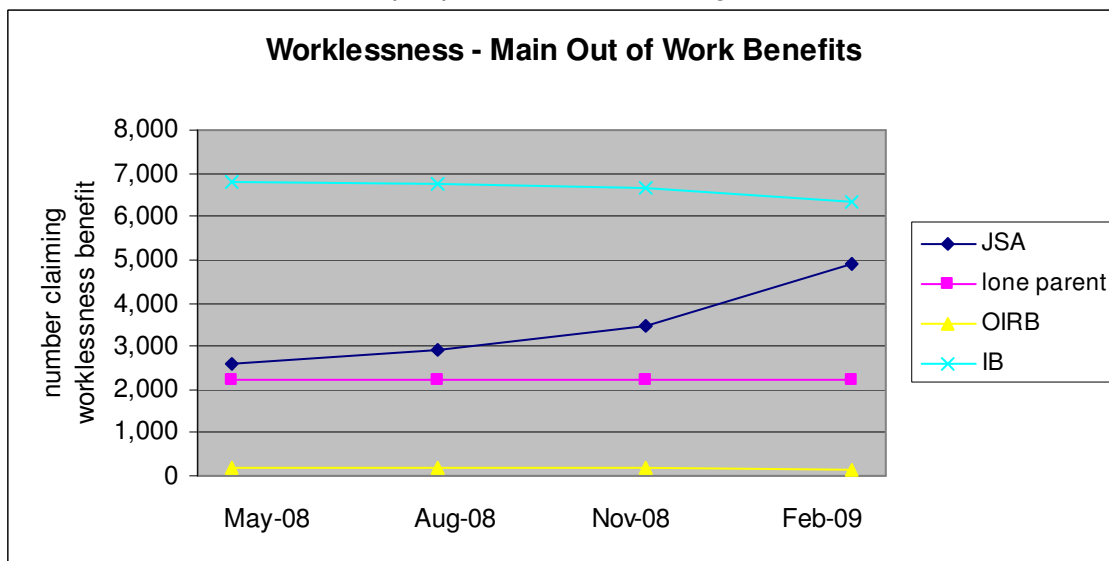
In line with Government guidance we use the following data to determine the worklessness rate:

Working age resident population claiming:

- Job Seekers Allowance (JSA),
- Lone Parents on Income Support (LPIS),
- Incapacity Benefit (IB)
- Others on Income Related benefits (OIRB).

This data is updated quarterly with a six month time lag.

The graph below shows the number of people in Solihull claiming out of work benefits.



The Borough worklessness rate for February 2009 was **10.3%** (quarterly total of the above benefit claims divided by the borough working age resident population).