



Solihull
METROPOLITAN
BOROUGH COUNCIL

Solihull

Unemployment Briefing



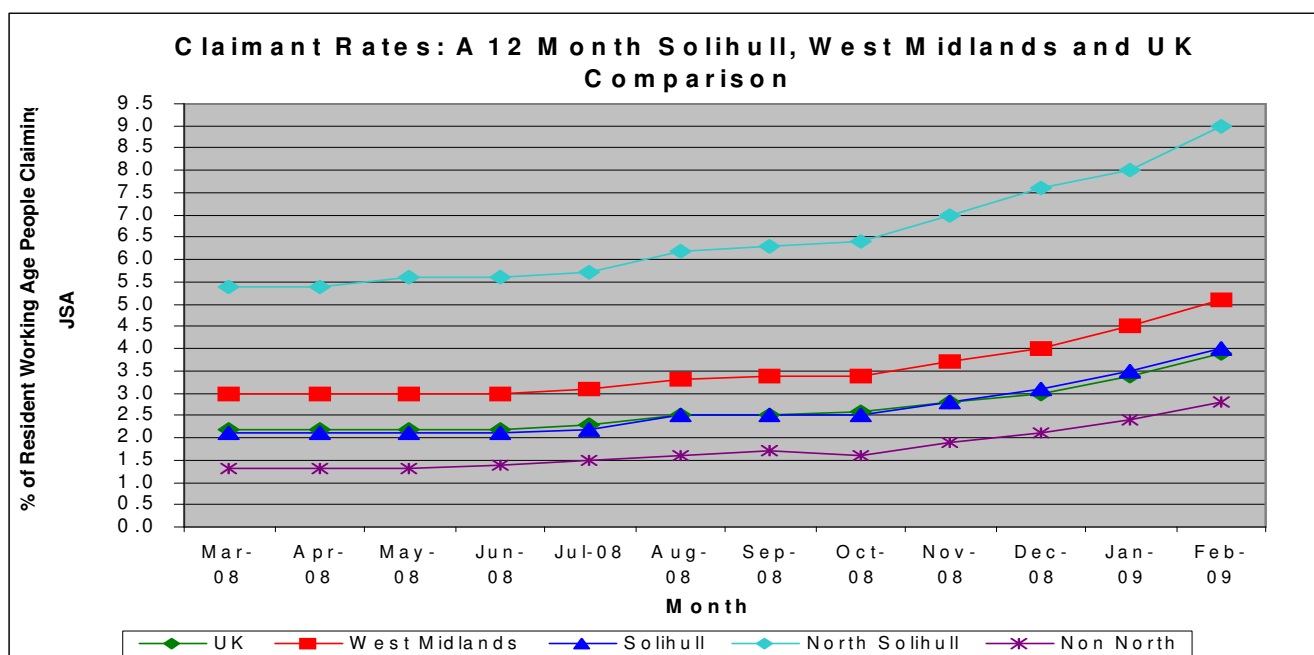
Community & Economic
Regeneration Division

February 2009

Unemployment Briefing: February 2009

The standard measure of unemployment in the Borough of Solihull is the 'claimant count'; this count measures only those people who are claiming Jobseekers Allowance (JSA). This analysis of the claimant count is derived from the administrative records of Jobcentre Plus.

	Male No's	Male Rate %	Female No's	Female Rate %	Total No's	Total Rate %
U.K	1,087,707	5.5	372,133	2.1	1,459,840	3.9
West Midlands	125,421	7.3	41,027	2.6	166,448	5.1
Solihull	3,576	5.7	1,272	2.2	4,848	4.0
Non North Wards	2,006	3.9	752	1.6	2,758	2.8
North Solihull	1,573	13.5	521	4.5	2,094	9.0



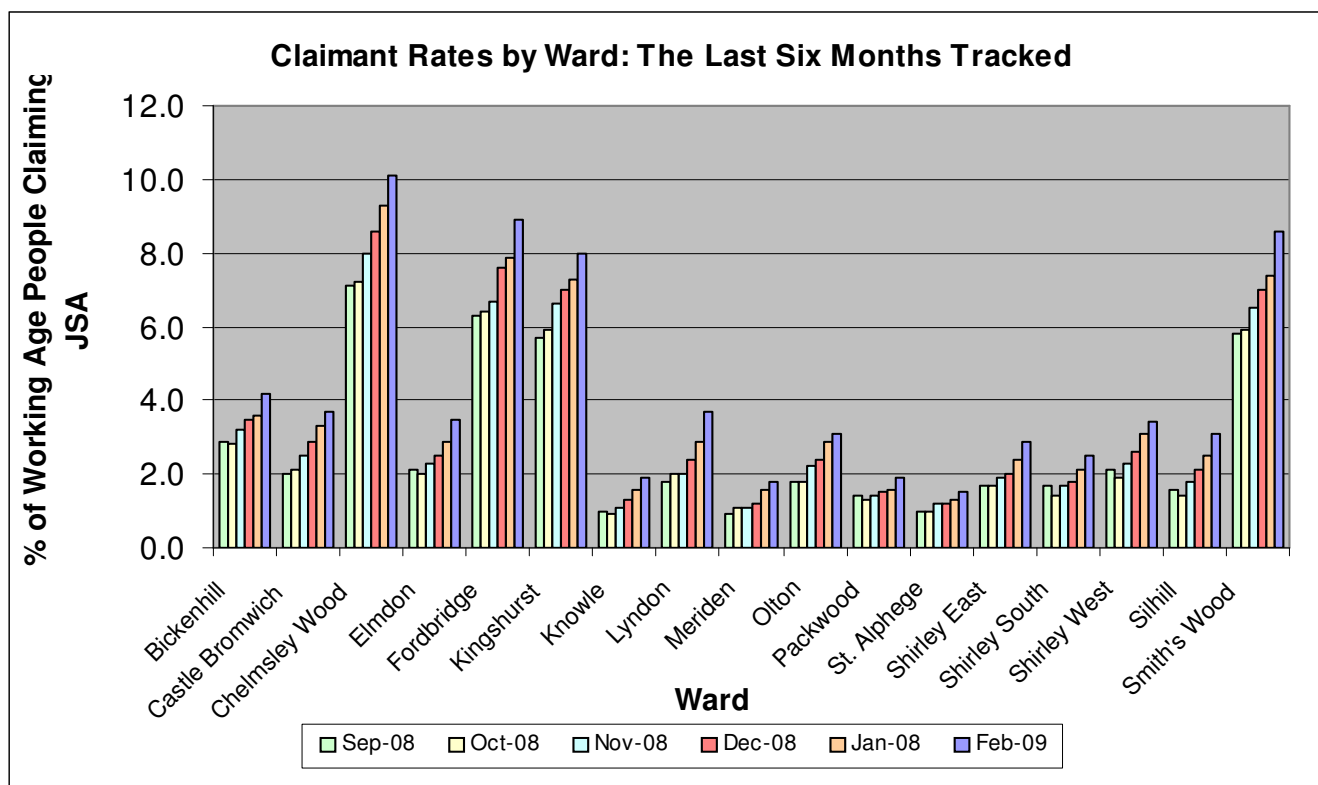
New Ward Data for Solihull

The numbers of people unemployed for each ward (new ward boundaries as of 2004) are based upon the number of Job Seeker's Allowance claims derived from the administrative records of Jobcentre Plus. However, the rates have been calculated using estimated working age population figures from the 2001 census as census data for the new ward boundaries is not yet available, therefore the rates for each ward may not be entirely accurate.

	Male Numbers	Male Rates %	Female Numbers	Female Rates %	Total Numbers	Total Rates %
Bickenhill	268	7.2	76	2.1	344	4.7
Blythe	127	3.4	51	1.5	178	2.5
Castle Bromwich	198	5.3	73	2.1	271	3.7
Chelmsley Wood	587	15.5	184	4.9	771	10.2
Dorridge & Hockley Heath	66	2.2	27	0.9	93	1.6
Elmdon	167	4.5	60	1.7	227	3.1
Kingshurst and Fordbridge	484	12.8	157	4.1	641	8.4
Knowle	82	2.5	32	1.1	114	1.8
Lyndon	199	5.0	77	2.1	276	3.6
Meriden	86	2.3	36	1.0	122	1.7
Olton	161	4.6	50	1.6	211	3.2
Shirley East	124	3.0	57	1.5	181	2.3
Shirley South	154	4.5	52	1.6	206	3.1
Shirley West	168	4.7	73	2.2	241	3.5
Silhill	122	3.3	55	1.6	177	2.5
Smith's Wood	502	16.8	180	6.5	682	11.9
St Alphege	84	2.2	33	0.8	117	1.5

Pre 2004 Ward Boundary Data

	Male Numbers	Male Rates %	Female Numbers	Female Rates %	Total Numbers	Total Rates %
Bickenhill	288	6.2	88	2.1	376	4.2
Castle Bromwich	198	5.1	73	2.1	271	3.7
Chelmsley Wood	496	15.2	160	4.9	656	10.1
Elmdon	149	5.2	44	1.6	193	3.5
Fordbridge	359	13.3	113	4.4	472	8.9
Kingshurst	285	11.9	96	4.1	381	8.0
Knowle	81	2.5	35	1.2	116	1.9
Lyndon	152	4.9	66	2.3	218	3.7
Meriden	94	2.4	37	1.1	131	1.8
Olton	161	4.4	50	1.6	211	3.1
Packwood	135	2.7	53	1.1	188	1.9
St. Alphege	92	2.1	37	0.9	129	1.5
Shirley East	136	3.8	62	1.8	198	2.9
Shirley South	190	3.5	68	1.4	258	2.5
Shirley West	168	4.6	73	2.1	241	3.4
Silhill	162	4.3	66	1.9	228	3.1
Smith's Wood	433	13.0	152	4.3	585	8.6



From January to February the rates of all Solihull wards went up. The highest increase of 1.2% was in Smith's Wood taking its rate up to 8.6%, followed by Fordbridge with an increase of 1.0% taking its rate to 8.9%. The overall effects of high unemployment are now starting to show with Bickenhill, Chelmsley Wood, Elmdon, Kingshurst, Lyndon, Shirley East and Silhill all showing increases of between 0.5% and 0.8%. This increase in claimants has seen the overall figure for Solihull rise to 4%, taking it 0.1% higher than the UK average, but lower than the WM regional average of 5.9%. This rise is in line with the national and regional trend of rising unemployment due to the economic downturn.