



**Solihull**  
METROPOLITAN  
BOROUGH COUNCIL

# Solihull

# Unemployment Briefing



Community & Economic  
Regeneration Division

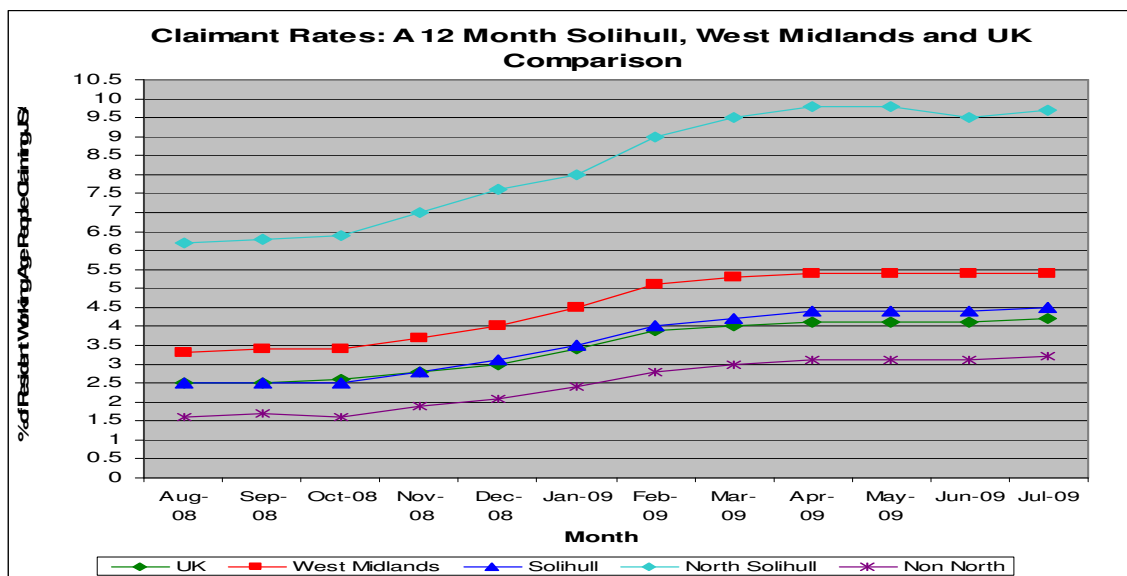
**July 2009**

## Unemployment Briefing: July 2009

The standard measure of unemployment in the Borough of Solihull is the 'claimant count'; this count measures only those people who are claiming Jobseekers Allowance (JSA). This analysis of the claimant count is derived from the administrative records of Jobcentre Plus.

▲ Increase    ▼ Decrease    ◀ No change (compared to the previous month's figure)

	Male No's	Male Rate %	Female No's	Female Rate %	Total No's	Total Rate %
<b>U.K</b>	1,151,487	5.8	421,652	2.3	1,573,139	4.2 ▲
<b>West Midlands</b>	132,396	7.7	45,368	2.9	177,764	5.4 ◀
<b>Solihull</b>	3,928	6.2	1,501	2.6	5,429	4.5 ▲
<b>Non North Wards</b>	2,250	4.4	925	2.0	3,175	3.2 ▲
<b>North Solihull</b>	1,686	14.5	577	4.9	2,263	9.7 ▲



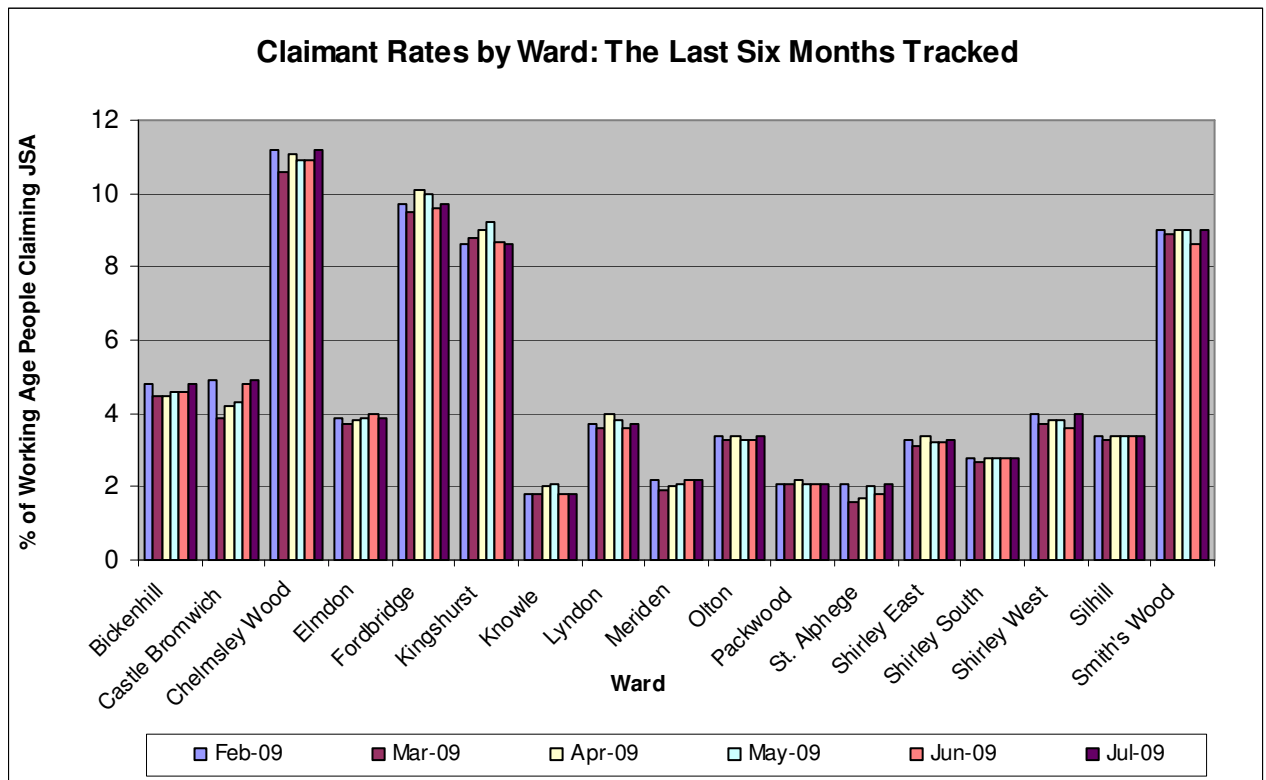
### New Ward Data for Solihull (2005 statistical wards)

The numbers of people unemployed for each ward (new ward boundaries as of 2004) are based upon the number of Job Seeker's Allowance claims derived from the administrative records of Jobcentre Plus. However, the rates have been calculated using estimated working age population figures based on the 2001 Census as Census data for the new ward boundaries is not yet available, therefore the rates for each ward may not be entirely accurate.

	Male Numbers	Male Rates %	Female Numbers	Female Rates %	Total Numbers	Total Rates %
Bickenhill	286	7.1	100	2.8	386	5.1 ▲
Blythe	132	3.1	60	1.5	192	2.3 ▼
Castle Bromwich	264	6.8	94	2.7	358	4.9 ▲
Chelmsley Wood	651	17.2	200	5.4	851	11.4 ▲
Dorridge & Hockley Heath	69	2.1	26	0.8	95	1.5 ◀
Elmdon	178	4.8	84	2.5	262	3.7 ▼
Kingshurst and Fordbridge	513	13.0	180	4.6	693	8.8 ▼
Knowle	76	2.4	42	1.6	118	2.0 ◀
Lyndon	216	5.4	78	2.1	294	3.8 ▲
Meriden	98	2.8	54	1.7	152	2.3 ▲
Olton	170	4.7	64	2.0	234	3.4 ▲
Shirley East	142	4.3	72	2.3	214	3.3 ▲
Shirley South	174	4.7	54	1.6	228	3.2 ◀
Shirley West	207	5.6	80	2.3	287	4.0 ▲
Silhill	127	3.9	60	2.0	187	3.0 ▲
Smith's Wood	522	13.5	197	5.0	719	9.2 ▲
St Alphege	111	2.8	57	1.6	168	2.2 ▲

(CAS 2003 wards)

	Male Numbers	Male Rates %	Female Numbers	Female Rates %	Total Numbers	Total Rates %
Bickenhill	309	6.6	120	2.8	429	4.8 ▲
Castle Bromwich	264	6.8	94	2.7	358	4.9 ▲
Chelmsley Wood	551	16.9	177	5.4	728	11.2 ▲
Elmdon	166	5.8	53	2.0	219	3.9 ▼
Fordbridge	388	14.4	124	4.8	512	9.7 ▲
Kingshurst	295	12.3	114	4.8	409	8.6 ▼
Knowle	74	2.2	40	1.4	114	1.8 ◀
Lyndon	158	5.1	62	2.2	220	3.7 ▲
Meriden	105	2.7	57	1.7	162	2.2 ◀
Olton	170	4.7	64	2.0	234	3.4 ▲
Packwood	143	2.9	61	1.3	204	2.1 ◀
St. Alphege	116	2.6	66	1.7	182	2.1 ▲
Shirley East	154	4.3	77	2.3	231	3.3 ▲
Shirley South	217	4.0	70	1.4	287	2.8 ◀
Shirley West	207	5.6	80	2.3	287	4.0 ▲
Silhill	167	4.4	81	2.3	248	3.4 ◀
Smith's Wood	452	13.6	162	4.6	614	9.0 ▲



Unemployment figures released for July 2009 show that since the June 2009 claimant figure release, the unemployment rate in Solihull increased in 9 wards, decreased in 3 wards and remained the same in 3 wards.

Chelmsley Wood, Shirley West, Smith's Wood and St Alphege recorded the highest claimant rate increases (0.4%) and Blythe recorded the highest claimant rate decrease (0.3%). The total number of JSA claimants in Solihull rose by 144 to 5,429 (based on 2005 ward information).

There has been an increase of 183 job vacancies in Solihull notified to Jobcentre Plus since June 2009, leaving a job vacancy total for July 2009 of 1,238.

The July 2009 claimant figures show that the West Midlands recorded the highest regional claimant rate in the United Kingdom (5.4%); this remained the same as the June 2009 figure. The UK (4.2%), Solihull (4.5%) and Non North Solihull (3.2%) recorded claimant figure rate increases of 0.1%. The North Solihull figure (9.7%) rose by 0.2%.

#### United Kingdom Regional Claimant Count

Government Office Region	number	rate
East	118,930	3.4 ◀
East Midlands	110,941	4.1 ▲
London	219,134	4.3 ▲
North East	85,038	5.3 ◀
North West	197,595	4.7 ▲
Northern Ireland	51,430	4.7 ▲
Scotland	132,568	4.1 ▲
South East	153,556	3.0 ◀
South West	94,346	3.0 ◀
Wales	78,043	4.3 ◀
West Midlands	177,764	5.4 ◀
Yorkshire and The Humber	153,794	4.8 ▲
<b>United Kingdom</b>	<b>1,573,139</b>	<b>4.2 ▲</b>

Within the UK's Government Office regions, 6 regions claimant rates stayed the same as June's figures, 6 had claimant rates which increased by 0.1% and Northern Ireland recorded the largest claimant rate increase of 0.2%. As stated above, the West Midlands remains the region with the highest claimant count rate of 5.4%. The total claimant count rate for the UK rose by 19,883.