



**Solihull**  
METROPOLITAN  
BOROUGH COUNCIL

# Solihull

# Unemployment Briefing



Community & Economic  
Regeneration Division

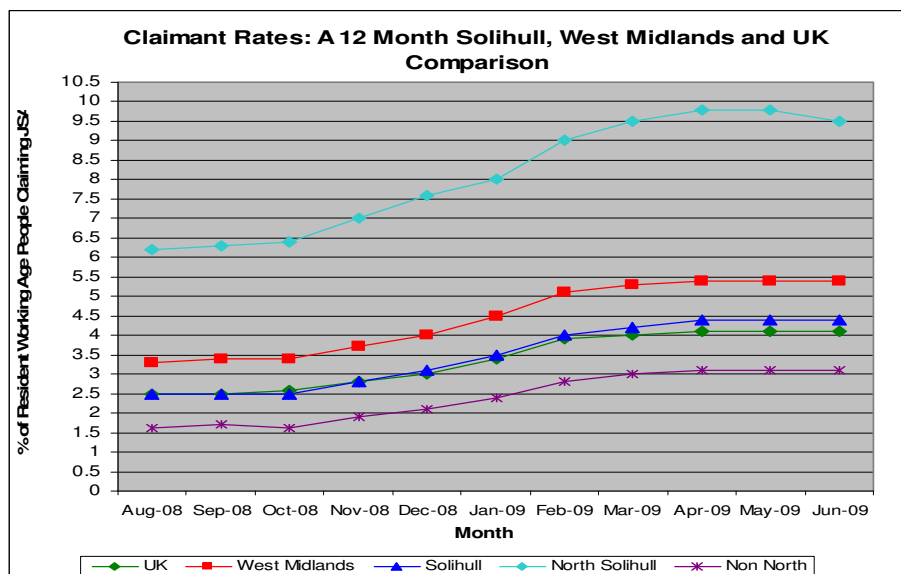
**June 2009**

## Unemployment Briefing: June 2009

The standard measure of unemployment in the Borough of Solihull is the 'claimant count'; this count measures only those people who are claiming Jobseekers Allowance (JSA). This analysis of the claimant count is derived from the administrative records of Jobcentre Plus.

▲ Increase ▼ Decrease ◀ No change (compared to the previous month's figure)

	Male No's	Male Rate %	Female No's	Female Rate %	Total No's	Total Rate %
<b>U.K</b>	1,148,238	5.8	405,018	2.2	1,553,256	4.1 ◀
<b>West Midlands</b>	132,569	7.7	44,056	2.8	176,625	5.4 ◀
<b>Solihull</b>	3,841	6.1	1,444	2.5	5,285	4.4 ◀
<b>Non North Wards</b>	2,193	4.3	876	1.9	3,069	3.1 ◀
<b>North Solihull</b>	1,654	14.2	569	4.9	2,223	9.5 ▼



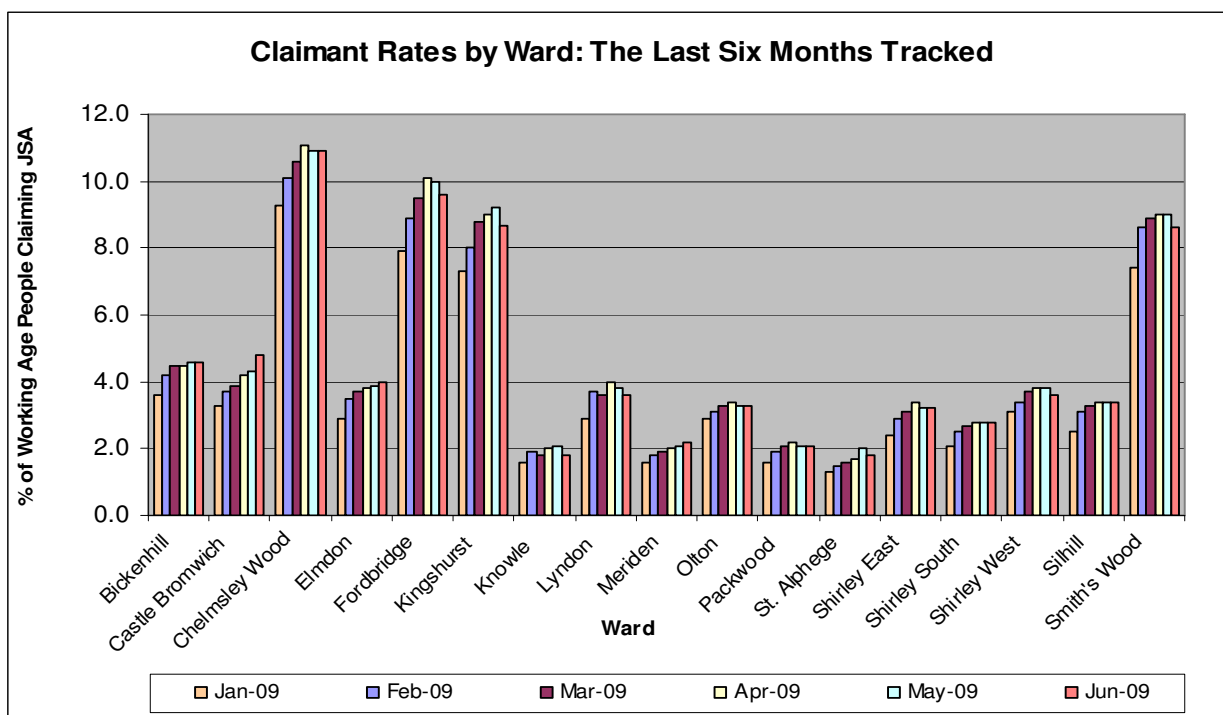
### New Ward Data for Solihull

The numbers of people unemployed for each ward (new ward boundaries as of 2004) are based upon the number of Job Seeker's Allowance claims derived from the administrative records of Jobcentre Plus. However, the rates have been calculated using estimated working age population figures based on the 2001 Census as Census data for the new ward boundaries is not yet available, therefore the rates for each ward may not be entirely accurate.

	Male Numbers	Male Rates %	Female Numbers	Female Rates %	Total Numbers	Total Rates %
Bickenhill	278	6.9	99	2.7	377	4.9 ▼
Blythe	136	3.2	73	1.9	209	2.6 ▼
Castle Bromwich	263	6.8	88	2.5	351	4.8 ▲
Chelmsley Wood	638	16.8	187	5.1	825	11.0 ▼
Dorridge & Hockley Heath	69	2.1	25	0.8	94	1.5 ▼
Elmdon	189	5.1	82	2.4	271	3.8 ▲
Kingshurst and Fordbridge	523	13.3	184	4.7	707	9.0 ▼
Knowle	74	2.4	39	1.5	113	2.0 ▼
Lyndon	199	5.0	85	2.3	284	3.7 ▼
Meriden	103	2.9	42	1.3	145	2.2 ▲
Olton	162	4.4	64	2.0	226	3.3 ▲
Shirley East	138	4.2	64	2.0	202	3.1 ▼
Shirley South	175	4.7	53	1.6	228	3.2 ▲
Shirley West	198	5.3	63	1.8	261	3.6 ▲
Silhill	115	3.5	60	2.0	175	2.8 ▲
Smith's Wood	493	12.8	198	5.0	691	8.8 ▼
St Alphege	94	2.4	39	1.1	133	1.8 ◀

## Pre 2004 Ward Boundary Data

	Male Numbers	Male Rates %	Female Numbers	Female Rates %	Total Numbers	Total Rates %
Bickenhill	302	6.5	111	2.6	413	4.6 <span style="color: orange;">▲</span>
Castle Bromwich	263	6.8	88	2.5	351	4.8 <span style="color: red;">▲</span>
Chelmsley Wood	543	16.7	167	5.1	710	10.9 <span style="color: orange;">▲</span>
Elmdon	163	5.7	60	2.2	223	4.0 <span style="color: red;">▲</span>
Fordbridge	392	14.6	116	4.5	508	9.6 <span style="color: green;">▼</span>
Kingshurst	294	12.3	120	5.1	414	8.7 <span style="color: green;">▼</span>
Knowle	73	2.2	38	1.3	111	1.8 <span style="color: green;">▼</span>
Lyndon	143	4.6	69	2.4	212	3.6 <span style="color: green;">▼</span>
Meriden	111	2.9	45	1.3	156	2.2 <span style="color: red;">▲</span>
Olton	162	4.5	64	2.0	226	3.3 <span style="color: orange;">▲</span>
Packwood	140	2.8	64	1.3	204	2.1 <span style="color: orange;">▲</span>
St. Alphege	103	2.3	52	1.3	155	1.8 <span style="color: green;">▼</span>
Shirley East	154	4.3	71	2.1	225	3.2 <span style="color: orange;">▲</span>
Shirley South	212	3.9	73	1.5	285	2.8 <span style="color: orange;">▲</span>
Shirley West	198	5.4	63	1.8	261	3.6 <span style="color: green;">▼</span>
Silhill	169	4.5	78	2.2	247	3.4 <span style="color: orange;">▲</span>
Smith's Wood	425	12.8	166	4.7	591	8.6 <span style="color: green;">▼</span>



Unemployment figures released for June 2009 show that since the May 2009 claimant figure release, the unemployment rate in Solihull increased in 3 wards, decreased in 7 wards and remained the same in 7 wards. Castle Bromwich had the highest claimant count increase (+0.5%) and Kingshurst the largest decrease (-0.5%). The total number of JSA claimants in Solihull fell by 65.

There has been a decrease of 876 job vacancies in Solihull notified to Jobcentre Plus since May 2009, leaving a job vacancy total for June of 1,055.

UK, West Midland, Solihull and Non North Solihull unemployment rates stayed the same as in May 2009, with North Solihull's unemployment rate dropping by 0.3% to 9.5%.