



Solihull
METROPOLITAN
BOROUGH COUNCIL

Solihull

Unemployment Briefing



Community & Economic
Regeneration Division

September 2009

Unemployment Briefing: September 2009

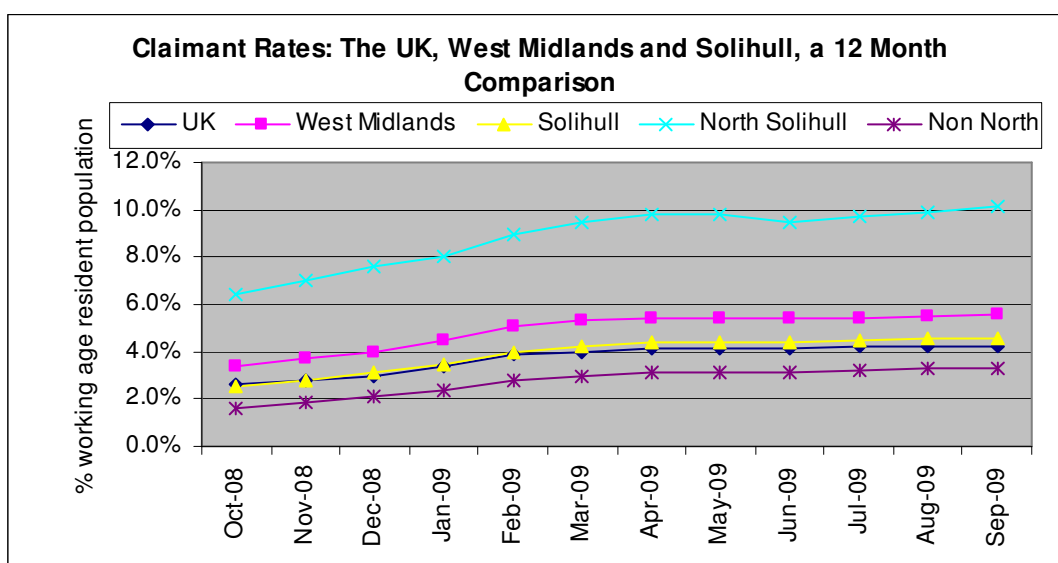
The standard measure of unemployment in the Borough of Solihull is the 'claimant count'; this count measures only those people who are claiming Jobseekers Allowance (JSA). This analysis of the claimant count is derived from Jobcentre Plus.

The Claimant Count – Solihull in a National, Regional and Local Context.

National Context

▲ Increase ▼ Decrease ◀ No change (compared to the previous month's figure)

	Male No's	Male Rate %	Female No's	Female Rate %	Total No's	Total Rate %
U.K	1,149,365	5.8	441,747	2.4	1,591,112	4.2 ◀
West Midlands	133,445	7.7	48,944	3.1	182,389	5.6 ▲
Solihull	3,969	6.3	1,580	2.7	5,549	4.6 ◀
Non North Wards	2,271	4.4	949	2.0	3,220	3.3 ◀
North Solihull	1,704	14.7	632	5.4	2,336	10.1 ▲



UK/Regional Context

Government Office Region	Number	Rate
East	119,263	3.5 ◀
East Midlands	111,735	4.1 ◀
London	226,910	4.5 ▲
North East	85,076	5.3 ▼
North West	199,744	4.7 ◀
Northern Ireland	53,492	4.9 ◀
Scotland	129,569	4.0 ▼
South East	155,202	3.0 ▼
South West	93,283	3.0 ◀
Wales	78,909	4.4 ◀
West Midlands	182,389	5.6 ▲
Yorkshire and The Humber	155,540	4.8 ▼
United Kingdom	1,591,112	4.2 ◀

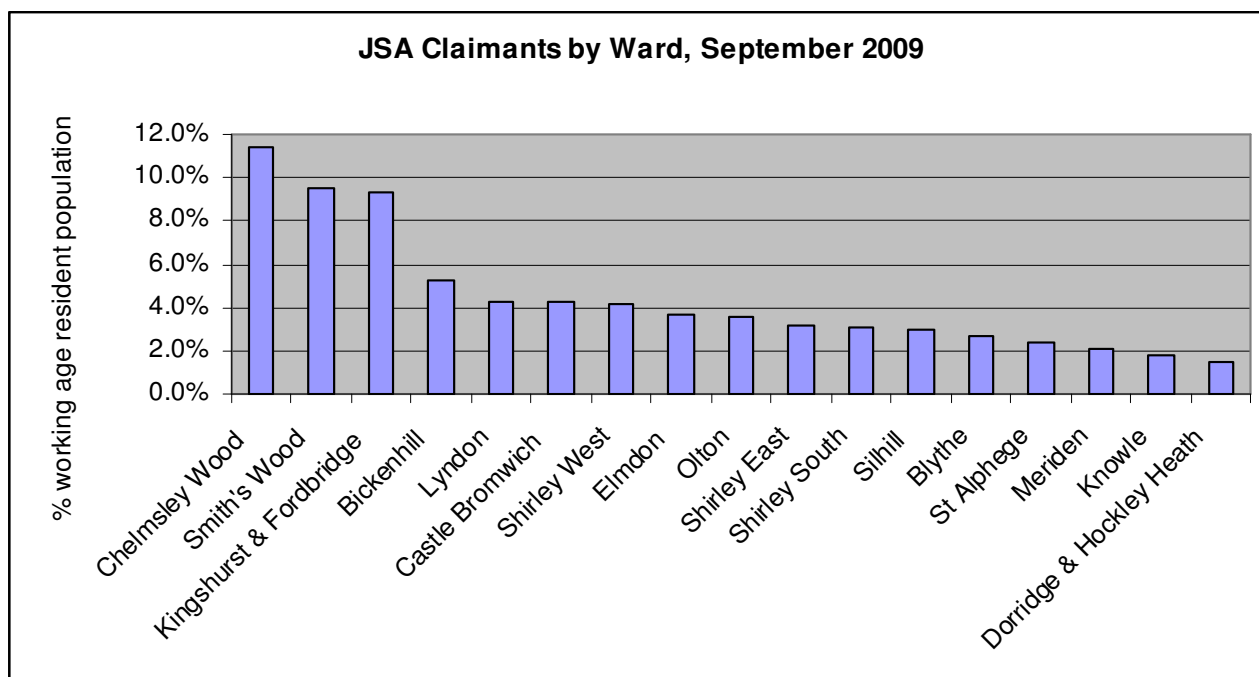
Within the UK Government Office regions, six regions claimant rates stayed the same as in August's figures; two had claimant rates which increased by 0.1% and four regions recorded falling claimant rates. The highest decrease of 0.2% was recorded in Scotland. The West Midlands remains the region with the highest claimant count rate of 5.6%, an increase of 0.1%.

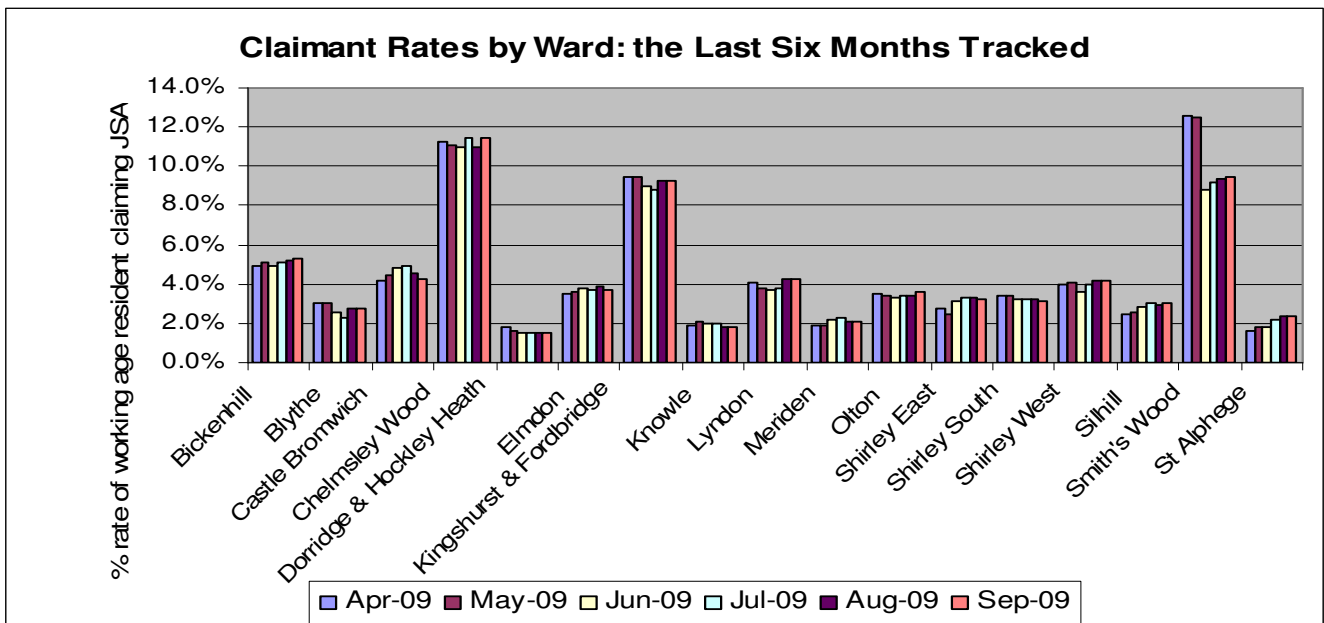
Local Context

The numbers of people unemployed for each ward are based upon the number of Job Seeker's Allowance claims derived from the administrative records of Jobcentre Plus. Claimant count rates have been calculated using Office for National Statistics Mid-2007 Population Estimates for 2009 Wards in England and Wales.

The claimant count in Solihull's wards (numbers and rates)

	Male Numbers	Male Rates %	Female Numbers	Female Rates %	Total Numbers	Total Rates %
Bickenhill	303	7.6	102	2.8	405	5.3 ▲
Blythe	145	3.4	75	1.9	220	2.7 ◀
Castle Bromwich	226	5.9	89	2.6	315	4.3 ▼
Chelmsley Wood	642	16.9	215	5.8	857	11.4 ▲
Dorridge & Hockley Heath	74	2.3	20	0.7	94	1.5 ◀
Elmdon	185	5.0	78	2.3	263	3.7 ▼
Kingshurst and Fordbridge	533	13.5	200	5.1	733	9.3 ◀
Knowle	63	2.0	41	1.6	104	1.8 ◀
Lyndon	241	6.0	95	2.5	336	4.3 ◀
Meriden	91	2.6	48	1.5	139	2.1 ◀
Olton	179	4.9	68	2.1	247	3.6 ▲
Shirley East	138	4.2	71	2.2	209	3.2 ▼
Shirley South	168	4.5	51	1.5	219	3.1 ▼
Shirley West	205	5.5	98	2.8	303	4.2 ◀
Silhill	133	4.1	52	1.7	185	3.0 ▲
Smith's Wood	529	13.7	217	5.5	746	9.5 ▲
St Alphege	120	3.0	61	1.7	181	2.4 ◀





Unemployment figures released for September 2009 show that since the August 2009 claimant figure release, the unemployment rate in Solihull increased in five wards, decreased in four wards and remained the same in eight wards. Chelmsley Wood recorded the highest claimant rate increases (0.4%) and Castle Bromwich and Elmdon recorded the highest claimant rate decrease (0.2%). The total number of JSA claimants in Solihull rose by 27 to 5,549.

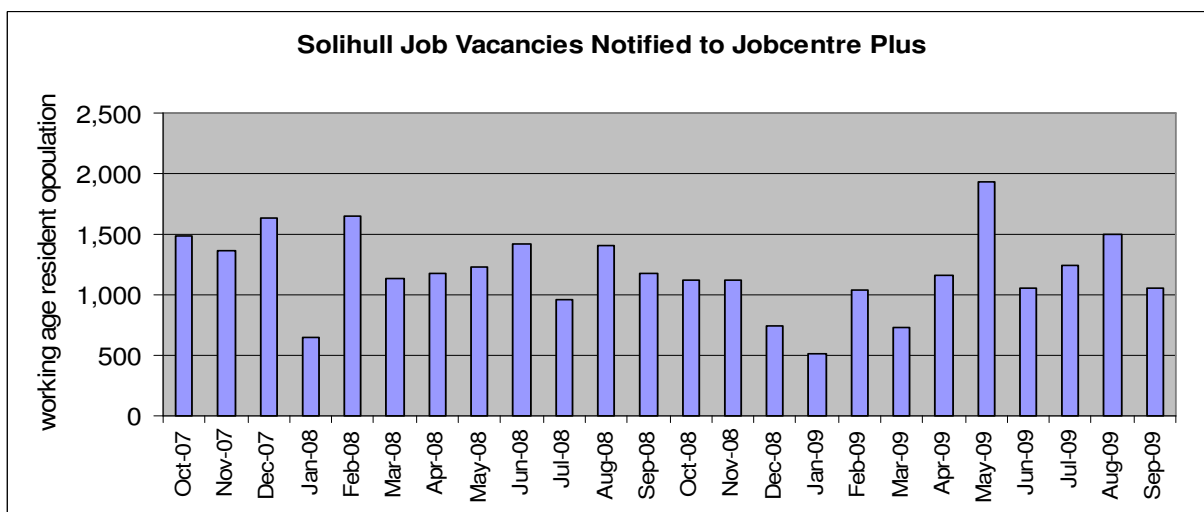
Solihull Job Vacancies notified to Jobcentre Plus

Data on the number of vacancies notified to Jobcentre Plus is released on a monthly basis. The number of recorded job seekers divided by the number of notified vacancies per month indicates the person per job vacancy ratio. The person per job ratio in September 2009 increased to 1:5.25, from the August 2009 figure of 1:3.7.

JSA Claimant per job vacancy ratio, September 2009		
Job Seekers	Vacancies	Job Seekers: Vacancy Ratio
5,549	1,057	5.25 : 1 ▲

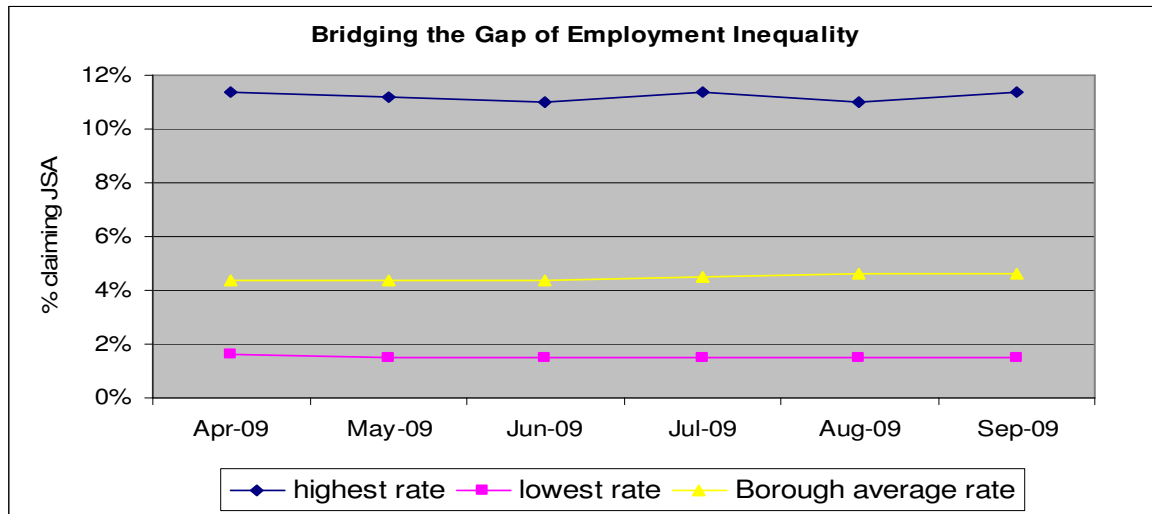
There has been a decrease of 437 job vacancies since August 2009, leaving a job vacancy total for September of 1,057. The graph below shows the number of vacancies over a two year period, with January 2009 showing the smallest number of vacancies and May 2009 showing the largest amount.

Job Vacancies notified to Jobcentre Plus over the last 2 years



Solihull – Bridging the Gap of Employment Inequality

The chart and data below reflect the highest and lowest claimant unemployment rates across Solihull's electoral wards on a rolling six monthly basis. The data is not ward specific; it is designed to use the highest and lowest rates to determine the monthly trend of the unemployment gap which exists in Solihull.



The employment inequality gap for September is 9.7 % an increase from August's figure of 9.5%.

Employment Inequality Gap, September 2009	9.7 % ▲
--	----------------

Worklessness Rates in Solihull

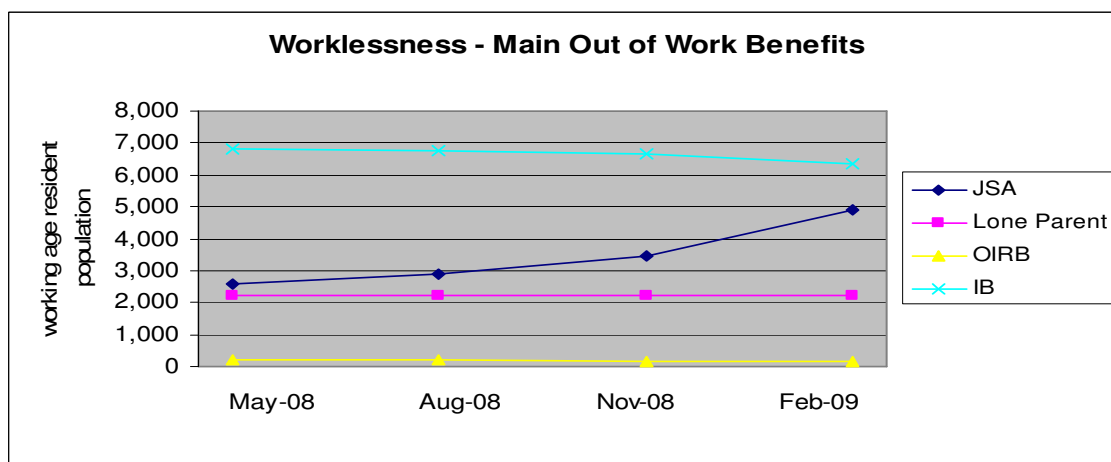
The worklessness figure for Solihull has been calculated using DWP figures accessed through NOMIS. In line with Government guidance we use the following data to determine the worklessness rate:

Working age resident population claiming:

- Job Seekers Allowance (JSA),
- Lone Parents on Income Support (LPIS),
- Incapacity Benefit (IB)
- Others on Income Related benefits (OIRB).

This data is updated quarterly with a six month time lag.

The graph below shows the number of people in Solihull claiming out of work benefits.



The quarterly total of the above benefit claims divided by the borough working age resident population gives a borough wide worklessness rate for February 2009 of **10.3%**.

Reporting Unemployment

There are various methods that are used to calculate and report the number of people not in employment. The robustness of this data varies and figures reported in the media can vary greatly depending on the source of the data. Worklessness data is calculated as detailed above and contains information derived from a number of benefit claimant groups. Unemployment data can be calculated using the Job Seekers Allowance (JSA) Claimant Count or the Labour Force Survey (which uses the internationally agreed International Labour Organisation definition of unemployment)

The JSA Claimant Count is sourced from Jobcentre Plus and records the number of people claiming unemployment related benefits – mainly JSA and National Insurance Credits. The figures are available monthly (4 to 5 weeks in arrears on release). Figures are issued for small areas, wards and local authorities. The figures represent a full count of JSA claimants, they are not a survey.

The Labour Force Survey (LFS) is only available at a regional and national level, and includes all those who are out of work but actively seeking employment. This therefore includes a number of people (i.e. people whose partner is working; young people under the age of 18 who are not in education or training) who are looking for work but are not claiming JSA. As the LFS measure is based on a survey of people living in the UK there are some concerns about its robustness given that the survey is based on a small sample, done on a rolling three month average (2 months in arrears) and the time when the survey takes place could affect the outcome of the sample.

Below are the unemployment figures for the West Midlands (as the LFS is not available at Solihull level) using the two methods. The variance is stark and for the purposes of the Solihull Unemployment Briefing we will continue to use the JSA Claimant Count so that we can report the most accurate, up to date information at Borough and Ward level.

West Midlands Unemployment Figures		
Claimant Count unemployment rate (source NOMIS)	May - July 2009	5.4%
ILO (LFS) unemployment rate (source WMRO*)	May - July 2009	10.5%

* West Midlands Regional Observatory