

Partnership Progress



Solihull Partnership Quarterly Newsletter for members of the Solihull Partnership

A word from the Editor...

Welcome to the autumn edition of our Partnership newsletter. The feedback from our first issue in July was really positive and shows that the content and style of the newsletter hit the mark! We hope this issue will continue to keep you up to speed on Partnership working in Solihull and support you in getting involved.

The last three months have seen some significant changes in policy direction with a range of emerging changes to Partnership working through the introduction of Local Enterprise, and Health and Wellbeing Partnerships. While not all of the detail is there yet on those changing expectations, partners in Solihull have been active in shaping our response to establishing a Local Enterprise Partnership, with our proposals receiving government approval in October.

While we continue to work through what these changes will mean to Partnership working in Solihull, I hope the work featured in this issue will demonstrate our continued focus on making a difference to outcomes for the people of Solihull.



see page 2



Melanie Locky

Melanie Locky
Head of Partnership
Commissioning

Taking Action Against Poverty

We are currently taking steps to help low income families across the borough through our money advice teams; helping these families to participate more fully in community life.



Understanding the factors that drive poverty such as employment opportunities, access to childcare, education and training, access to decent housing and transport, is key to being able to develop an effective strategy that overcomes these barriers.

Solihull Council has launched a public consultation on **'Money Counts'** aimed at finding out about the financial pressures of being in a low income household in Solihull and the support people can access. The consultation is part of the larger Action Against Poverty project designed to develop a borough-wide strategy to help families whose household income is not high enough to live a normal healthy life.

A recent Partnership workshop provided a real insight into existing work to tackle poverty in Solihull and provide the building blocks to developing our future strategy.

The survey closes on Tuesday 30 November. More information can be found on the [Solihull Partnership](#) website.

Partnership Priorities see page 2 on how to have your say.

| Getting involved in your area

Earlier this year we established four Local Partnership Forums to help stakeholders become more involved in our work.



The first round of forums took place in July and provided a good opportunity for people to discuss the things that are the most important in their area. Issues raised included:

- Transport to get to jobs and services.
- Support for businesses and creating jobs.
- Bringing communities together.
- Lack of affordable housing.
- Issues around young people.
- Giving young people a voice

The next meetings are taking place this month, and the main topics for discussion are:

- Partnership priorities (see below)
- Consultation on the emerging Core Strategy (the new development plan for the borough which will set the main planning policies to 2026, including new housing and employment allocations).

We look forward to seeing you at the next round of Partnership Forum Meetings listed below:

Date	Wards / Area - all 7pm - 9pm	Venue
9 November	Shirley, St Alphege	Shirley Centre, Stratford Road, Shirley
15 November	Olton, Lyndon, Silhill, Elmdon	The Library, Langley Secondary School
17 November	Rural	Meriden Village Hall
25 November	North of the borough	Kingshurst Evangelical Church, Cooks Lane, Kingshurst

To confirm your attendance contact Hannah Colson on 0121 704 8258 or hcolson@solihull.gov.uk

Priority focus in the future

Over the last few months we have been looking at what the main priorities for partners should be for the next three years. The aim of the priorities is to ensure better outcomes for people living and working in Solihull, and to address the gap in equalities that some people in the borough experience.

We will ensure the priorities for the future are based on strong evidence, and we have used the principles of our Common Commissioning Framework to guide the refresh process.

The first stage (Jun – Sept 10) was to do a thorough review of key findings for a range of needs in the borough to help identify potential cross-cutting priorities. Having agreed a long list of 24 potential priorities we are now looking to find out what you think are the most important priorities which can collectively have the most impact.

An **Online Survey** has been set up to collect your views along with a **Priorities Booklet**, which outlines a case for each of the priorities.

Please take this opportunity to influence the priority focus of the Partnership in the future. The deadline

for responses is **Sunday 21 November 2010.**

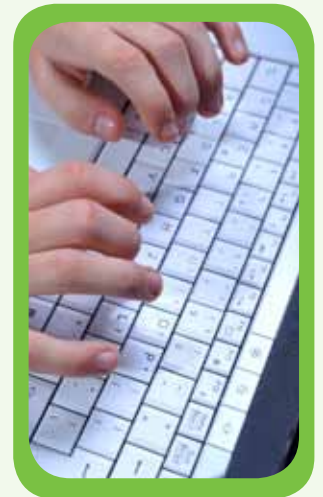
The results of this consultation will be used to inform the refresh of our Sustainable Communities Strategy (SCS) and support the delivery planning (Jan – March) to identify the how, who and what impact we plan to make in addressing the agreed priorities.

For more information about the consultation please contact Sarah Barnes on 0121 704 8347, or sbarnes@solihull.gov.uk

Members' Event:

There are two sessions on **Thursday 11 November** in the Civic Suite to give you an opportunity to learn more about the priorities and put your views forward.

Booking: You only need to attend one session. To confirm your attendance contact Hannah Colson on 0121 704 8258 or at hcolson@solihull.gov.uk.



| Our Work

PROSPEROUS & HEALTHIER COMMUNITIES

Keep Warm, Keep Well

We have launched this year's Winter Warmth Campaign to ensure vulnerable residents are prepared to keep warm and well during the winter month.

Now in its third year, this successful campaign has helped many residents to stay warm and healthy with a dedicated **Winter Warmth Helpline** for people who need urgent help.

Last year, the helpline took 350 calls from worried residents; 65 heaters were delivered to vulnerable people, 84 electric blankets, and 10 successful applications were made to the Emergency Fund. Hats, scarves and gloves were also sent out, and over 16,500 Winter Warmth Campaign leaflets and temperature cards were also provided.

While we are pleased with the impact of last year's campaign, we are not resting on our laurels! This year our aim is to include even more organisations involved in reducing winter deaths, with a specific focus on reducing the numbers of households in fuel poverty.



Winter Warmth

Keeping Solihull Warm

We are hosting a dedicated event in the north of the borough next month where partners such as Citizen's Advice Bureau, Age UK Solihull, Solihull Community Housing, Credit Union and others, will be providing a money-management and debt awareness support service. Colebridge Communications' new community bus will also be on hand providing a raft of information for people on the day, as well as highlighting volunteering opportunities for residents.

You can download a copy of the [Winter Warmth Leaflet](#) for more information.



STRONGER COMMUNITIES

Celebrating Black History



Last month's Black History Month was a cracking success! It is one of the Partnership's flagship festivals celebrating the cultural diversity of Solihull. Now in its fifth year, this October was our most ambitious yet with contributions from African, African Caribbean and Asian Communities.

Partners and residents alike enjoyed the experience of live theatre performances provided by Nu Century Arts including The Tragedy of King Christophe, and the uplifting musical drama, Not Quite Gospel, with the latter tackling the subject of intergenerational conflict in today's Britain.

Black history month

One of the most successful events was the Caribbean Family History Exhibition, which attracted media interest from both ITV Central News and Radio 4. Carlston Walters, event organiser for the *Who You Be* exhibition, was interviewed about his family experiences on the **'Tracing Your Roots'** programme on Radio 4, and **'Tracing Family History'** programme on ITV.

Owen McFarlane, Community Capacity Building Officer, says:

“ This fifth anniversary of Black History Month once again lived up to expectations. All the events were well received and I'm sure this will be an ongoing commitment for the future. ”

SAFER SOLIHULL



Excellence in cutting crime

Solihull has been officially recognised as one of the best performing areas in the country for reducing reoffending.

According to the [latest Ministry of Justice figures](#), reoffending rates in Solihull were 20.7 per cent lower than the government expected in the year 2009/10.

Successful Community Payback projects have contributed to this achievement, which range from litter removal to clearing dense undergrowth, and environmental projects through repairing and redecorating community centres or removing graffiti.

Jane Connelly, Head of Solihull Probation Service, says:

“Although Solihull has relatively low crime levels and local people are unlikely to become a victim of crime, we’re always looking for more opportunities to drive down crime and make the borough an even safer place. Safer Solihull is committed to working with offenders and supporting them through the rehabilitation process.”

CHILDREN & YOUNG PEOPLE’S TRUST: LINCS

- **LINCS** or **Local Integrated Needs-led Co-ordinated Support**, helps staff to support children, young people and families before they reach crisis point.
- LINCS brings the different agencies involved with a child together to share information.
- LINCS is a way of giving support early to prevent problems later on, saving time and money.
- It gives agencies a head start in terms of identifying a problem, preventing family situations developing into complex needs.
- Anybody working with children and young people can use the LINCS process.

Contact the **LINCS Support Team** on 0121 788 4334, email lincs@solihull.gov.uk or visit www.solihull.gov.uk/workforce

LINCS in Action

Jacinta Corcoran is a Child and Family Support Worker at Merstone School in Chelmsley Wood and is very positive about LINCS:

“I recently organised a LINCS for Robert*, who is seven-years-old and has autism. Mary* and her husband were struggling as Robert was very hyperactive and would not sleep at night. His behaviour was causing a significant rift between the parents and the older son Michael*.

“As part of LINCS I asked a disability nurse to advise and support the parents to manage Robert’s behaviour. I also worked with the school to set up after school activities for Robert so that Mary could spend quality time with her son, Michael.

“A speech therapist got involved and showed Robert how he could express himself through other forms of communication, helping to ease his frustration. The school nurse also referred Robert to a paediatrician who gave Mary advice and medication so that Robert could sleep better.

If Mary had not come to me asking for help they may have had a break up in the marital home and Robert’s behaviour may have escalated. The family are now working with Robert together, and not pulling against each other.”

Nine out of ten children and young people living in Solihull who are supported by LINCS have benefited as a result. In Robert’s case, his LINCS has now closed and his behaviour has improved considerably.

**Names changed for confidentiality to protect the family*



Contact Information

If you have any **comments** about this issue we would like to hear from you. We’re always on the look out for relevant articles, news and events for the newsletter, so please let Rav Jagdev our Marketing and Communications Officer know at rjagdev@solihull.gov.uk or call 0121 704 8117