

# Shaping Solihull's Future Together: Next Steps

## Local Development Framework Feedback Conference

Tuesday 22 November 2011

**Councillor Ken Meeson**  
**Leader of the Council**

# Shaping Solihull's Future Together: Next Steps

Local Development Framework  
Feedback Conference

**Councillor Ian Courts**

Cabinet Portfolio Holder

Economic Development and Regeneration

# Shaping Solihull's Future Together: Next Steps

## Local Development Framework Feedback Conference

**Anne Brereton**

Director of Places

# Government Policy & Legislation

- Planning for Growth
- Draft National Planning Policy Framework
- Localism Act
- Housing Strategy

# An urgent call for action

- Powerful presumption in favour of sustainable development
- Opening up more land for development, while retaining existing controls on greenbelt land
- New land auctions
- Liberalisation of use classes;
- Guaranteed timescales for planning applications & appeals and fast tracked major infrastructure

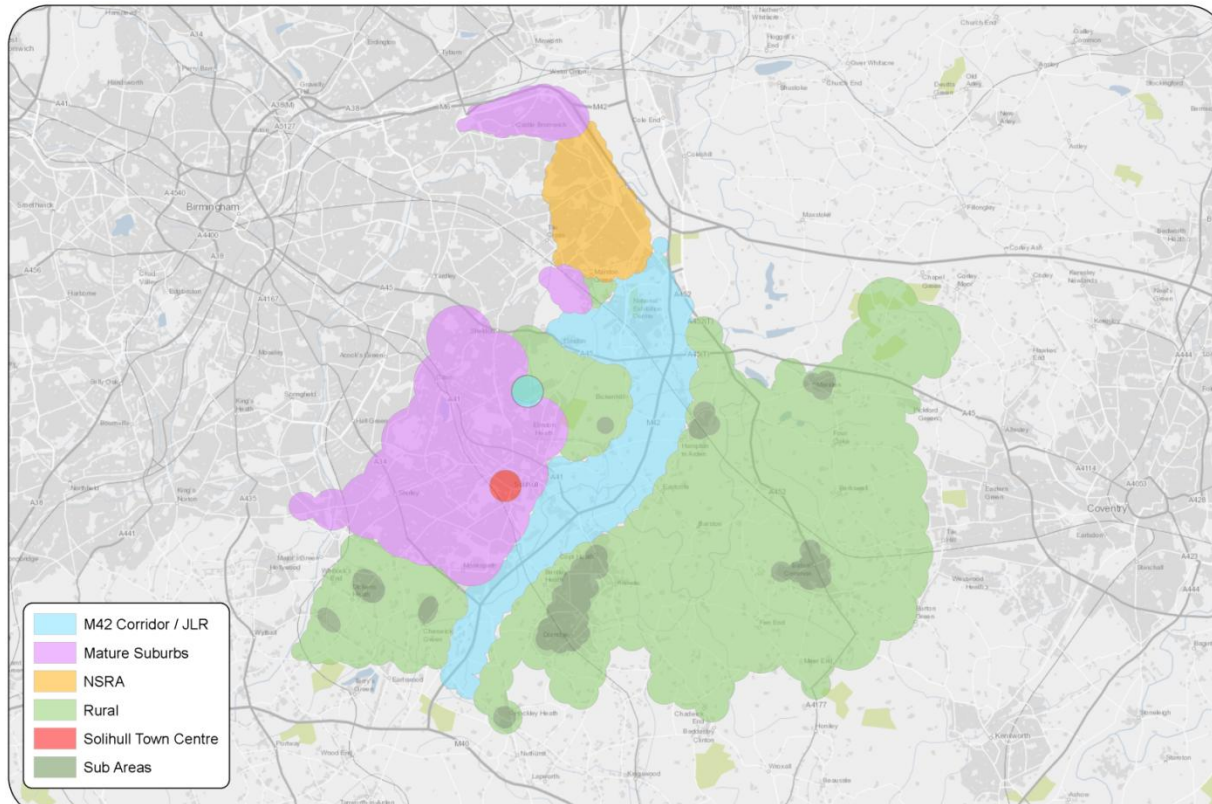
# Localism Act

- New freedoms & flexibilities for local government
  - General power of competence
  - Greater local control over business rates
- New rights & powers for communities
  - Community right to challenge and bid
- Reform of the planning system
  - Neighbourhood planning
  - Community Right to build
- Reform of housing decisions

# Vision & Strategy to 2028

- Protected and enhanced what's good about Solihull
- Economically successful
- Meeting local needs
- Sustainable growth
- Strategic responsibility & Local sensitivity

# Locally distinctive areas



# Paul Watson

**Strategic Director, Regeneration &  
Development**

Solihull Metropolitan Borough Council

## **Local Development Framework Feedback Conference**

Tuesday 22 November 2011

# LDF Core Strategy: Delivering the vision

- Policies
- Proposals

A local plan for Solihull

# Sustainable economic growth

- JLR, NEC, BHX
- Small and medium sized businesses
- Town centres

# Town centres

- Solihull – quality and distinction
- Shirley – regeneration and a new heart
- Chelmsley Wood – growth and linkages

# Regional Investment Sites

- Birmingham Business Park
- Blythe Valley

Refreshed and relevant policies

# Homes for all

- Urban renaissance in West Midlands
- Needs not numbers
- Affordable Housing
- Special needs

## Key sites

# Local Communities

- Sustaining rural villages
- Protecting mature suburbs

# Environment

- Biodiversity
- Countryside
- Managing transport impacts
- Climate change

# Next steps

- Consultation on Draft Plan
- Examination in Public
- Adoption
- Neighbourhood Plans
- Development Management

## Dialogue and delivery