

February 2008

The Solihull Partnership is the local, strategic partnership for the Borough. It is responsible for bringing together local communities and the agencies that serve them to plan for the future of Solihull.

Working in partnership is the only way to get the best outcomes for the people of Solihull, and to tackle the most challenging issues such as raising achievement, preventing crime, and regenerating our communities.

.....
In this edition of *e-sp* you will find:

- Governing Board progress report
- [Information about key projects](#)
- [Partnership structure & who's who](#)
- Information about the work of the Partnership's thematic groups:
 - [Children and Young People's Trust](#)
 - [Jobs & Enterprise Partnership](#)

Partnership meetings are open to observers by arrangement.

.....
For more information about the Solihull Partnership contact:

- Councillor Ken Meeson, Partnership Chair, 01564 777772
kmeeson@solihull.gov.uk
- Ben Lewing, Governing Board Manager, 0121 704 6691
blewing@solihull.gov.uk,
- Nick Tromans, Partnership Co-ordinator, 0121 7046145,
ntromans@solihull.gov.uk,

Reports and minutes are published to www.solihull.gov.uk/solihullpartnership

Governing Board progress report

1. The Solihull Partnership Governing Board is the decision-making body for the Solihull Partnership. It meets on a monthly basis.
2. The Board has been working on new plans to develop the Partnership and on the 17th of January agreed to establish a new Partnership support team. The Board also agreed to establish partnership standards for the Governing Board and thematic groups to ensure consistency. To find out more contact Ben Lewing, on 0121 704 6691 or blewing@solihull.gov.uk.
3. Consultation on the draft Community Strategy for Solihull closes on the 8th of February with a meeting of the Partnership Forum. The Strategy has stimulated lengthy discussion about our vision and priorities for Solihull. Your feedback will now be used to shape the next version of the Strategy. To find out more contact Nick Tromans, on 0121 704 6033 or ntromans@solihull.gov.uk.
4. The Partnership is negotiating a new Local Area Agreement with the Government. This is a series of targets to improve outcomes for people in Solihull, for which the Government provides a financial reward. These targets will be used to measure how successful we are in implementing our Sustainable Community Strategy. To find out more contact Ian Ash, LAA Project Manager on 0121 704 6992 or iash@solihull.gov.uk.
5. The Governing Board has created a new Equality and Diversity Group, led by Sally Burton, Chief Executive of the Solihull Care Trust.
6. The Governing Board is interested in strengthening the sharing of data to inform commissioning decisions. The Commissioning Project is to establish shared arrangements for 'commissioning intelligence'. To find out more contact Phil Mayhew, Commissioning Project Executive, on 0121 704 6652, or pmayhew@solihull.gov.uk.
7. Next Governing Board meeting: 6th March 2008.

Key Solihull Partnership Projects

1. LSP Governance Project

- Project Executive: Cllr Bob Sleigh. Project Manager: Ben Lewing
- Purpose: To equip the Solihull Partnership to deliver the Sustainable Community Strategy
- Progress: Project approved to start (January '08)

2. Sustainable Community Strategy Project

- Project Executive: Mark Rogers. Project Manager: Paul Watson
- Purpose: To produce a Sustainable Community Strategy that sets the vision and priorities for improvements in outcomes for people in Solihull.
- Progress: Draft strategy published for consultation

3. Local Area Agreement Project

- Project Executive: Mark Rogers. Project Manager: Ian Ash
- Purpose: To agree performance measures for the Sustainable Community Strategy
- Progress: Indicators being negotiated with Government Office West Midlands

4. Commissioning Project

- Project Executive: Phil Mayhew. Project Manager: Ben Lewing.
- Purpose: To create an integrated commissioning framework for the Partnership.
- Progress: Project Brief to Governing Board in March.

5. Neighbourhoods Project

- Project Executive: Paul Watson. Project Manager: to be confirmed.
- Purpose: To establish arrangements for delivering joined up services in neighbourhoods.
- Progress: Project Brief to Governing Board in March.

6. Equalities and Diversity Project

- Project Executive: Sally Burton. Project Manager: Richard Honeysett.
- Purpose: To mainstream equality & diversity within the culture of the Solihull Partnership.
- Progress: Multi-agency working group in place.

7. Change for Children Programme

- Programme Senior Responsible Owner: Mark Rogers. Programme Mgr: Ben Lewing.
- Purpose: Deliver local integrated services for children and young people.
- Progress: Local delivery model has been consulted on, three locality managers to be appointed from April; workforce development project brief to Trust Board in February; local governance models being developed; information strategy approved by Trust Board; plan for local needs assessments in place.

8. Children and Young People's Plan priority commissioning projects

- Commissioning Manager: Teresa Scragg
- Healthy Lifestyles: Sally Burton / Stephen Munday; Anti-bullying and personal safety: Ann Habens / Noreen Lomasney; Raising Achievement for all: Peter Brammall / Philip Moss; Things to do, places to go: Gordon Scobbie / Alan Michell; An equal chance for vulnerable children and young people: John Ling / Anne Plummer.

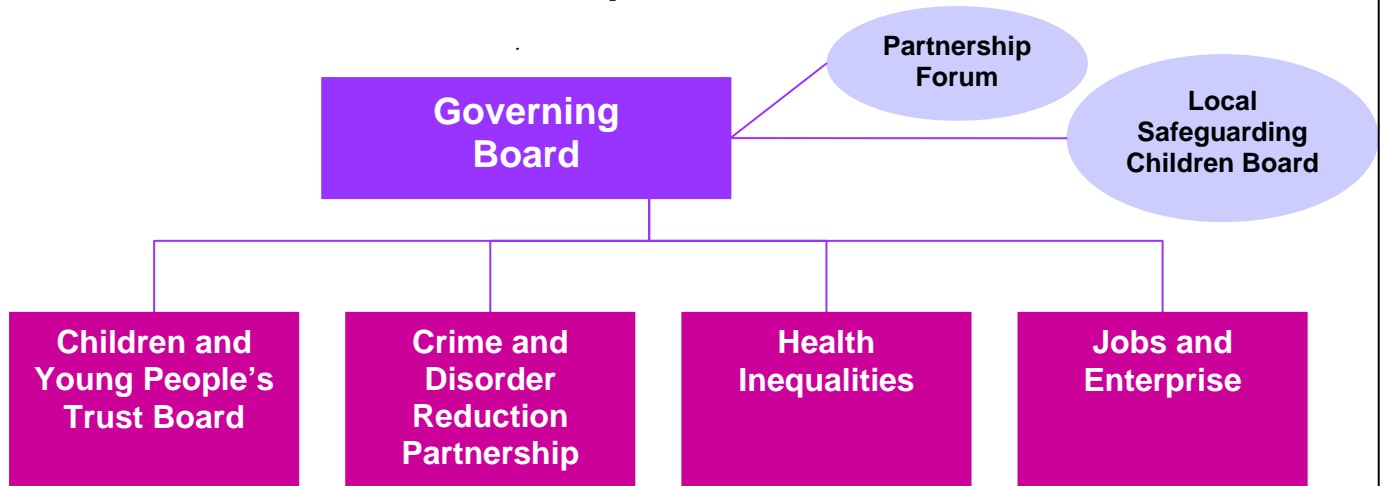
9. Joint Strategic Needs Assessment

- Lead Officer: Stephen Munday
- Purpose: To prepare a health needs assessment to inform the commissioning of services
- Progress: Multi-agency steering group agreed.

10. Community Safety Needs Assessment

- Lead Officer: Ann Habens
- Purpose: To prepare a community safety needs assessment to inform commissioning
- Progress: Draft assessment completed.

Solihull Partnership Structure and Who's Who



Governing Board members:

- Councillor Ken Meeson (Chair), Leader, Solihull Council
- Mark Rogers, Acting Chief Executive, Solihull Council
- Sally Burton, Chief Executive, Solihull Care Trust
- Gordon Scobbie, Chief Superintendent for Solihull, West Midlands Police
- David Mattocks and Dave Pinwell, representing the Voluntary & Community Sector
- Deborah Smith, representing the Solihull Chamber of Commerce
- James Kelly, Partnership Manager, Advantage West Midlands
- Peter Brammall, Area Director, Learning and Skills Council
- David Joyce, Solihull Commander, West Midlands Fire Service
- Shane Bryans, Government Officer West Midlands.

Governing Board Support Team:

- Board Manager: Ben Lewing
- Policy Support: Richard Honeysett, Nick Tromans
- Communications: Julie Collison
- Performance: Ian Ash
- Administration: Pippa Caulkin

Thematic Groups:

Children and Young People's Trust

- Chair: Mark Rogers, Acting Chief Executive, SMBC
- Lead Officer: Ben Lewing, Change for Children Programme Manager

Crime and Disorder Reduction Partnership

- Chair: Mark Rogers, Acting Chief Executive, SMBC
- Lead Officer: Ann Habens, Head of Public Protection, SMBC.

Health Inequalities Thematic Group

- Chair and Lead Officer: Stephen Munday, Joint Director of Public Health, Solihull Care Trust and SMBC

Jobs and Enterprise Thematic Group

- Chair: Cllr Ian Courts, SMBC Cabinet Member, Economic Development & Regeneration
- Lead Officer: Lynda Hackwell, Head of Community & Economic Regeneration, SMBC

The Solihull Children & Young People's Trust is the part of the Solihull Partnership which is responsible for improving outcomes for all children and young people in the Borough.

The Trust brings together service users, volunteers and practitioners, managers and leaders to plan, commission and deliver services which fit local need.

The Trust focuses on prevention and early intervention – a fence at the cliff top rather than an ambulance at the bottom.

TRUST NEWS

Children's Workforce development: Claire Moore (cmoore@solihull.gov.uk) has joined the Children and Young People's Trust Team to develop our children's workforce strategy.

Common Assessment Framework: A new team is now in place to support you to use the Common Assessment Framework if you are concerned about a child or young person. Find out more at www.solihullonevoice.org.

Safeguarding is everyone's business: 3rd – 9th March is safeguarding week, with conferences, training and much more. Contact Chris Skelly, cskelly@solihull.gov.uk for details.

Get your copy of the Plan! Hard copies of the Children and Young People's Plan available from skhokhar@solihull.gov.uk.

New Trust Commissioning Team: Teresa Scragg leads the Trust's new Commissioning Team, incorporating the Children's Fund from April 2008.

Children & Young People's Trust Board Meeting summary, January 2008

1. The Trust Board reviewed and agreed a new strategy on providing information to children, young people and their families, as part of the Change for Children Programme (Contact: Teresa Scragg, tscragg@solihull.gov.uk).
2. The Board also agreed a Young People's Substance Misuse Strategy which provides a balance between treatment and education. Alcohol misuse was noted as an issue of growing concern (Contact: Sara Rooney, srooney@solihull.gov.uk).
3. Disabled Children are a priority in the Children and Young People's Plan, and the Board reviewed commissioning progress. Further developing integrated services for disabled children was noted as a key issue which could have a significant impact on partner agencies. Jane Wilton, Priority Lead, is working with the Trust Commissioning Team to take this forward.
4. Revised proposals for Integrated Service Delivery were considered, using feedback from the consultation in 2007. The Board agreed in principle to move to establish a project manager in each of three localities, with discussions about resource commitment to follow.
5. The Board received an update report on youth crime prevention, and noted the key link to the Integrated Youth Support Services Project which will deliver Targeted Youth Support.
6. Next Trust Board meeting: 14th February '08.

For more information on the Solihull Children and Young People's Trust:

- Mark Rogers, Chair of the Trust Board, 0121 704 6672 mrogers@solihull.gov.uk
- Ben Lewing, Change for Children Programme Manager, 0121 704 6691, blewing@solihull.gov.uk
- Solihull Children and Young People's Trust website: www.solihullonevoice.org

The Jobs and Enterprise Group is the part of the Solihull Partnership responsible for economic development and regeneration. The Group works to bring about sustainable economic growth, increase entrepreneurship, job and wealth creation and tackle economic inequalities to help everyone in the Borough realise their potential.

.....

NEWS

Economic Development Strategy:

The Solihull Economic Development Strategy is out, and partners are working on an action plan to deliver the Strategy. Priorities for the next 3 years include:

- meeting challenges of an increasingly competitive global economy;
- promoting enterprise and skills;
- helping to tackle economic inequalities.

West Midlands Economic Strategy:

The new strategy launched in December, focuses on closing the region's £10bn productivity gap.

European Funding:

North Solihull is now identified as a priority area for European Regional Development Fund (ERDF) support under Priority 3 of the new West Midlands ERDF programme (2007-2013).

Business growth in North Solihull:

North Solihull Partnership has started an 'Enterprise for Success' scheme which offers free help to new business start-ups in North Solihull. The Partnership is being asked to provide long term support for this scheme; to offer grant support to business start-ups, and re-locate traders wanting to locate within Village Centres being developed as part of the North Solihull Regeneration programme.

Jobs and Enterprise Group Meeting summary – 26th November 2007

1. The development of the Sustainable Community Strategy and the LAA – Round 2 element was introduced to members of the group - highlighting the need to focus on reshaping and re-branding the agenda. Comments on the Strategy and proposed indicators for the LAA Round 2 were requested to be returned by the 7th December 2008.
 - The draft Sustainable Community Strategy demonstrates relevant priorities and indicators for Local Economy and Environmental Sustainability.
 - The LAA Round 2 requires the selection of pertinent economic indicators from the National Indicator set of 198 priorities to be included in our 35 key indicators.
2. The Economic Development Strategy was presented to members. Comments on the Strategy were requested to be returned by the 14th December 2008.
3. The Qtr 2 Report for the LAA Economic Development & Enterprise Block was presented for information, highlighting to members any indicators that are currently reported as Red or Amber.
4. The date & time for future Jobs and Enterprise Group meetings are:
 - 19th February 2008, 10.00 – 12.00
 - 15th May 2008, 10.00 – 12.00
 - 15th July 2008, 10.00 – 12.00
 - 17th September 2008, 10.00 – 12.00

For more information on the Jobs and Enterprise Group:

- Lynda Hackwell, Head of Community & Economic Regeneration – 0121 704 8081
lhackwell@solihull.gov.uk
- Rachel Westwood, Economic Regeneration Policy & Performance Manager – 0121 704 6047
rwestwood@solihull.gov.uk