



Solihull
METROPOLITAN
BOROUGH COUNCIL

Solihull

Unemployment Briefing



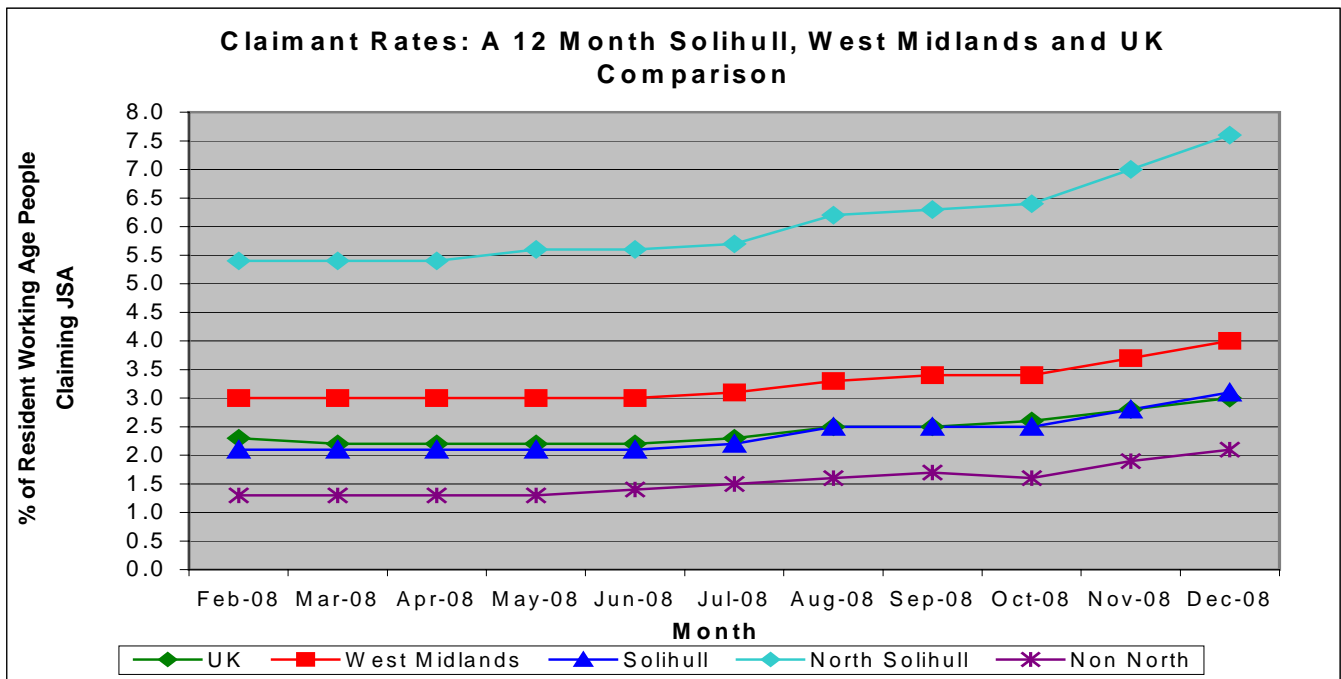
Community & Economic
Regeneration Division

December 2008

Unemployment Briefing: December 2008

The standard measure of unemployment in the Borough of Solihull is the 'claimant count'; this count measures only those people who are claiming Jobseekers Allowance (JSA). This analysis of the claimant count is derived from the administrative records of Jobcentre Plus.

	Male No's	Male Rate %	Female No's	Female Rate %	Total No's	Total Rate %
U.K	865,168	4.4	288,160	1.6	1,153,328	3.0
West Midlands	100,418	5.8	32,282	2.1	132,700	4.0
Solihull	2,798	4.4	957	1.6	3,755	3.1
Non North Wards	1,491	3.0	528	1.1	2,019	2.1
North Solihull	1,309	11.5	430	3.7	1,739	7.6



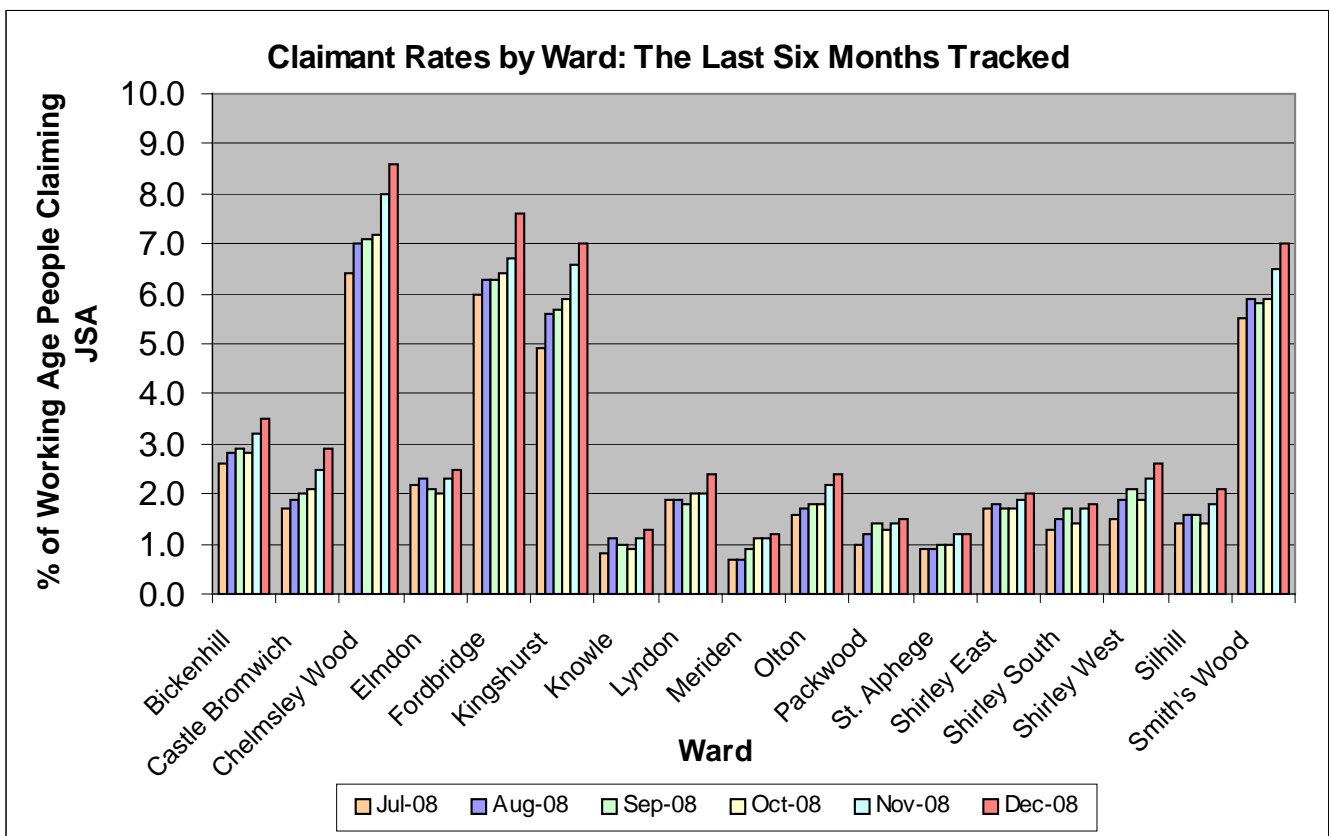
New Ward Data for Solihull

The numbers of people unemployed for each ward (new ward boundaries as of 2004) are based upon the number of Job Seeker's Allowance claims derived from the administrative records of Jobcentre Plus. However, the rates have been calculated using estimated working age population figures from the 2001 census as census data for the new ward boundaries is not yet available, therefore the rates for each ward may not be entirely accurate.

	Male Numbers	Male Rates %	Female Numbers	Female Rates %	Total Numbers	Total Rates %
Bickenhill	223	6.0	60	1.7	283	3.9
Blythe	93	2.5	28	0.8	121	1.7
Castle Bromwich	161	4.3	51	1.4	212	2.9
Chelmsley Wood	507	13.4	154	4.1	661	8.7
Dorridge & Hockley Heath	43	1.4	22	0.8	65	1.1
Elmdon	114	3.0	42	1.2	156	2.1
Kingshurst and Fordbridge	395	10.4	137	3.5	532	7.0
Knowle	56	1.7	19	0.6	75	1.2
Lyndon	140	3.5	50	1.4	190	2.5
Meriden	64	1.7	19	0.5	83	1.1
Olton	117	3.4	44	1.4	161	2.4
Shirley East	89	2.2	35	0.9	124	1.6
Shirley South	109	3.2	41	1.3	150	2.3
Shirley West	135	3.8	52	1.6	187	2.8
Silhill	86	2.4	33	1.0	119	1.7
Smith's Wood	407	13.6	139	5.0	546	9.5
St Alphege	61	1.6	32	0.8	93	1.2

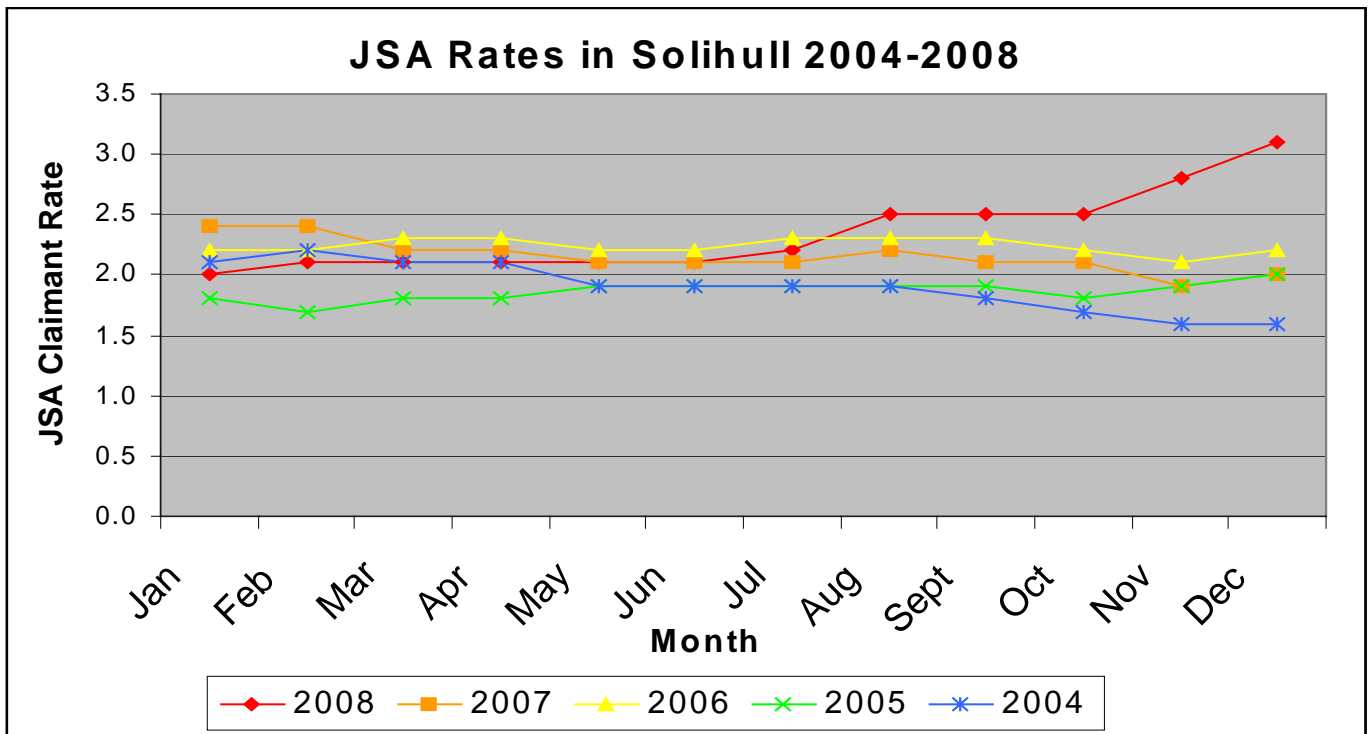
Pre 2004 Ward Boundary Data

	Male Numbers	Male Rates %	Female Numbers	Female Rates %	Total Numbers	Total Rates %
Bickenhill	240	5.4	68	1.6	308	3.5
Castle Bromwich	161	4.3	51	1.4	212	2.9
Chelmsley Wood	426	13.2	132	4.0	558	8.6
Elmdon	107	3.7	32	1.2	139	2.5
Fordbridge	297	11.3	98	3.8	395	7.6
Kingshurst	237	10.5	81	3.5	318	7.0
Knowle	58	1.7	23	0.7	81	1.3
Lyndon	102	3.3	41	1.5	143	2.4
Meriden	67	1.8	19	0.5	86	1.2
Olton	117	3.4	44	1.4	161	2.4
Packwood	98	2.2	33	0.8	131	1.5
St. Alphege	64	1.5	34	0.9	98	1.2
Shirley East	95	2.8	40	1.2	135	2.0
Shirley South	138	2.6	52	1.0	190	1.8
Shirley West	135	3.7	52	1.5	187	2.6
Silhill	109	3.0	39	1.1	148	2.1
Smith's Wood	349	10.8	119	3.5	468	7.0

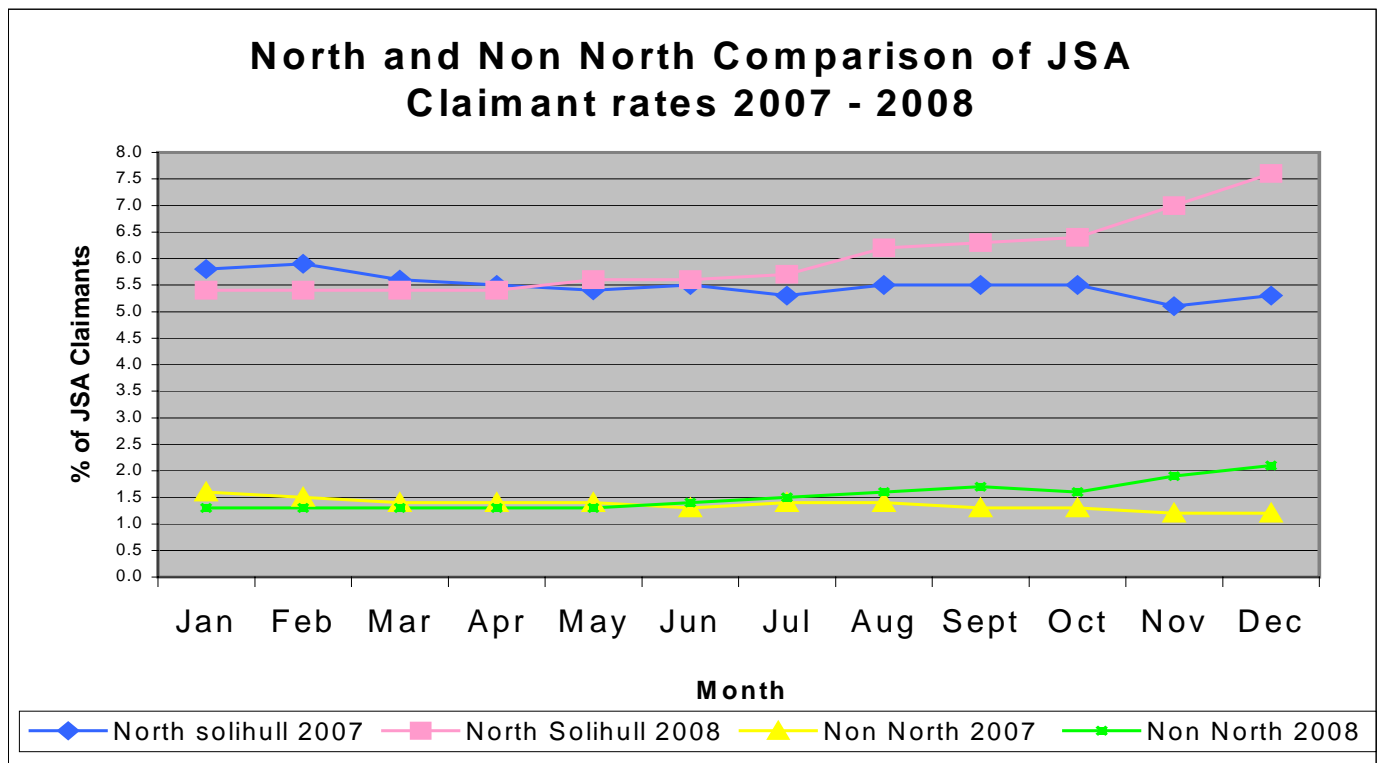


From November to December the rates of 16 wards went up. Again, the highest increases were in 3 of the 4 North Solihull wards with Fordbridge having the highest increase of 0.9% (from 6.7% to 7.6%). Chelmsley Wood's rate rose by 0.6% and the Smith's Wood rate by 0.5%. The rates of 1 ward remained the same (St. Alphege), with no wards showing a decrease in JSA claims. Usually at this time of year we see a drop in JSA claims due to seasonal jobs being available, in light of the current economic climate resulting in fewer seasonal jobs, this year we have not followed this trend.

Unemployment Trends



Solihull usually follows a similar trend according to seasonal changes. However, this year the trend has not been followed with JSA claims rising more dramatically than usual from August 08 and continuing to rise into the November and December period where the rate would usually drop due to seasonal jobs being available. This clearly demonstrates the effects of the credit crunch on unemployment rates.



As you can see from the above graph 2008 started with a lower rate than the previous year. The rates maintained a similar pattern up until July and August. From here rates have continued to increase. You can see how the North of the Borough has been affected more severely resulting in higher levels of JSA Claims.