



Solihull
METROPOLITAN
BOROUGH COUNCIL

Solihull

Unemployment Briefing



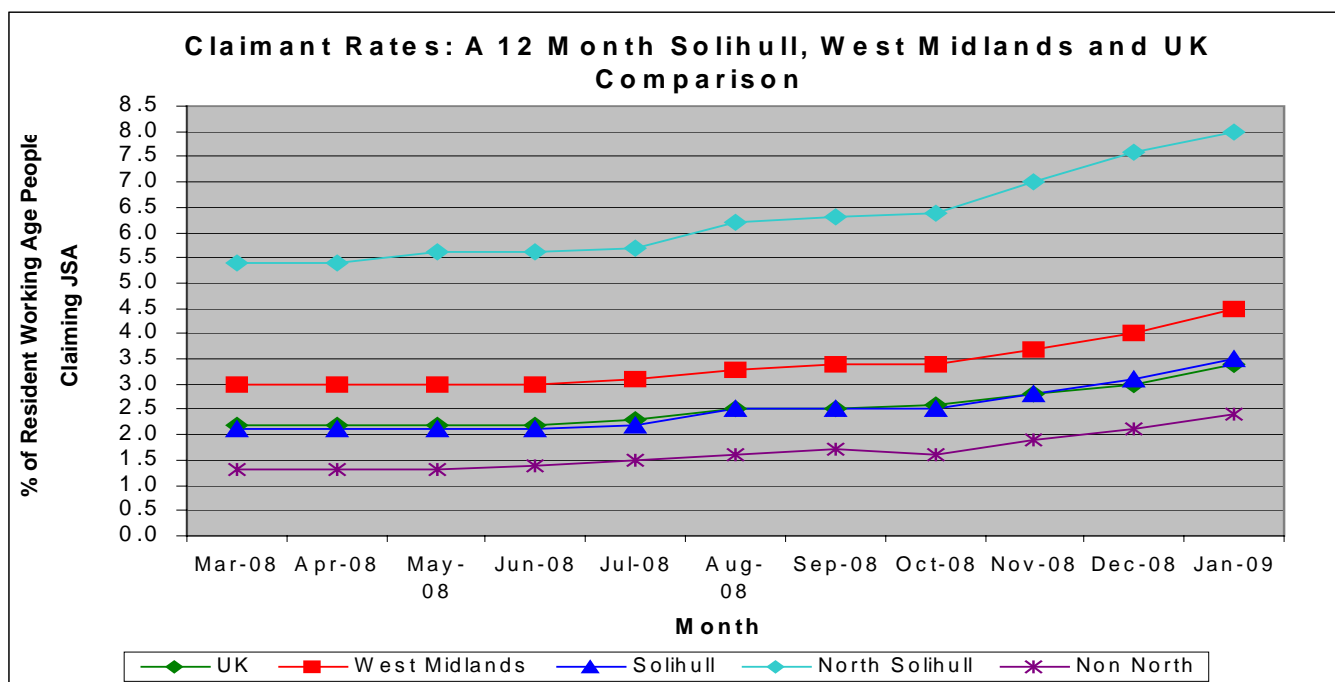
Community & Economic
Regeneration Division

January 2009

Unemployment Briefing: January 2009

The standard measure of unemployment in the Borough of Solihull is the 'claimant count'; this count measures only those people who are claiming Jobseekers Allowance (JSA). This analysis of the claimant count is derived from the administrative records of Jobcentre Plus.

	Male No's	Male Rate %	Female No's	Female Rate %	Total No's	Total Rate %
U.K	958,622	4.8	324,023	1.8	1,282,645	3.4
West Midlands	110,757	6.4	36,033	2.3	146,790	4.5
Solihull	3,115	5.0	1,109	1.9	4,224	3.5
Non North Wards	1,708	3.3	644	1.4	2,352	2.4
North Solihull	1,408	12.1	465	4.0	1,873	8.0



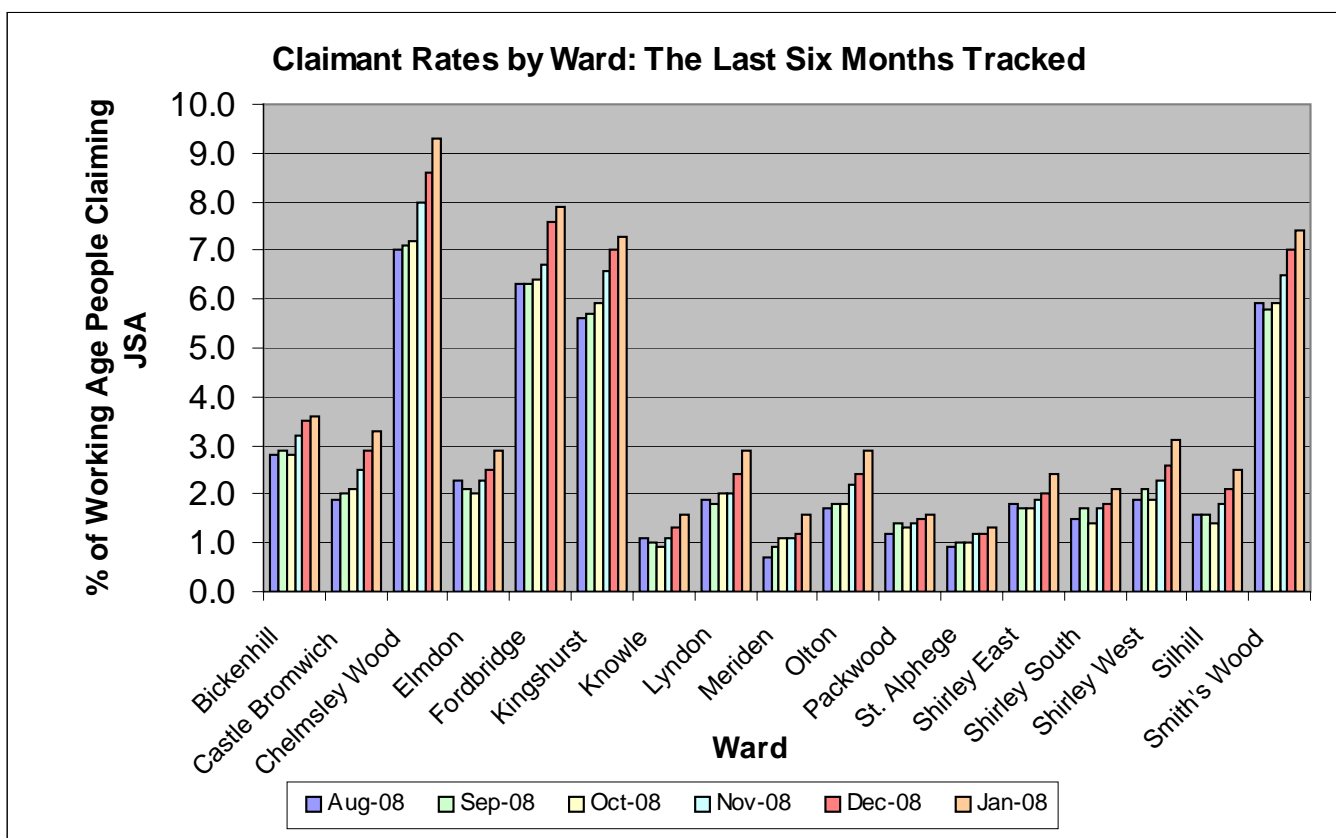
New Ward Data for Solihull

The numbers of people unemployed for each ward (new ward boundaries as of 2004) are based upon the number of Job Seeker's Allowance claims derived from the administrative records of Jobcentre Plus. However, the rates have been calculated using estimated working age population figures from the 2001 census as census data for the new ward boundaries is not yet available, therefore the rates for each ward may not be entirely accurate.

	Male Numbers	Male Rates %	Female Numbers	Female Rates %	Total Numbers	Total Rates %
Bickenhill	229	6.1	67	1.9	296	4.0
Blythe	109	3.0	37	1.1	146	2.0
Castle Bromwich	176	4.7	65	1.8	241	3.3
Chelmsley Wood	540	14.2	170	4.5	710	9.4
Dorridge & Hockley Heath	50	1.7	24	0.8	74	1.3
Elmdon	140	3.7	47	1.3	187	2.6
Kingshurst and Fordbridge	435	11.5	131	3.4	566	7.4
Knowle	66	2.0	28	0.9	94	1.5
Lyndon	156	3.9	61	1.7	217	2.9
Meriden	81	2.2	28	0.8	109	1.5
Olton	146	4.2	49	1.6	195	3.0
Shirley East	106	2.6	48	1.3	154	2.0
Shirley South	124	3.6	51	1.6	175	2.6
Shirley West	155	4.4	65	2.0	220	3.2
Silhill	98	2.7	40	1.2	138	1.9
Smith's Wood	433	14.5	164	5.9	597	10.4
St Alphege	72	1.9	34	0.9	106	1.4

Pre 2004 Ward Boundary Data

	Male Numbers	Male Rates %	Female Numbers	Female Rates %	Total Numbers	Total Rates %
Bickenhill	247	5.3	74	1.7	321	3.6
Castle Bromwich	176	4.6	65	1.9	241	3.3
Chelmsley Wood	458	14.1	144	4.4	602	9.3
Elmdon	125	4.4	37	1.4	162	2.9
Fordbridge	319	11.8	97	3.7	416	7.9
Kingshurst	260	10.9	88	3.7	348	7.3
Knowle	66	2.0	32	1.1	98	1.6
Lyndon	119	3.9	51	1.8	170	2.9
Meriden	87	2.3	28	0.8	115	1.6
Olton	146	4.0	49	1.5	195	2.9
Packwood	114	2.3	42	0.9	156	1.6
St. Alphege	77	1.7	35	0.9	112	1.3
Shirley East	115	3.2	52	1.5	167	2.4
Shirley South	154	2.8	62	1.3	216	2.1
Shirley West	155	4.2	65	1.9	220	3.1
Silhill	127	3.4	52	1.5	179	2.5
Smith's Wood	371	11.2	136	3.9	507	7.4



From December to January the rates of all Solihull wards went up. The highest increase of 0.7% was in Chelmsley Wood taking its rate up to 9.3%. The overall effects of high unemployment are now starting to show with the next highest increases being in Lyndon, Olton and Shirley West, which all rose by 0.5%. This constant increase of claimants has pushed the average unemployment rate for Solihull to 3.5%, taking it 0.1% higher than the national average. However Solihull continues to follow the national and regional trend of rising unemployment levels due to the economic downturn.