



Solihull
METROPOLITAN
BOROUGH COUNCIL

Solihull

Unemployment Briefing



Community & Economic
Regeneration Division

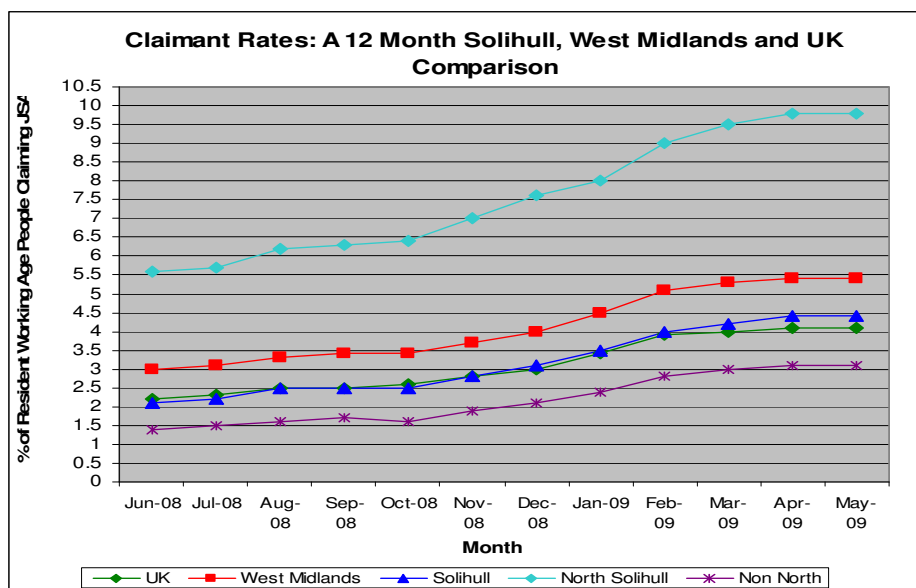
May 2009

Unemployment Briefing: May 2009

The standard measure of unemployment in the Borough of Solihull is the 'claimant count'; this count measures only those people who are claiming Jobseekers Allowance (JSA). This analysis of the claimant count is derived from the administrative records of Jobcentre Plus.

▲ Increase ▼ Decrease ◀ No change (compared to the previous month's figure)

	Male No's	Male Rate %	Female No's	Female Rate %	Total No's	Total Rate %
U.K	1,160,589	5.9	404,389	2.2	1,564,978	4.1 ◀
West Midlands	133,454	7.7	44,013	2.8	177,467	5.4 ◀
Solihull	3,871	6.2	1,479	2.5	5,350	4.4 ◀
Non North Wards	2,173	4.2	896	1.9	3,069	3.1 ◀
North Solihull	1,704	14.6	584	5.0	2,288	9.8 ◀



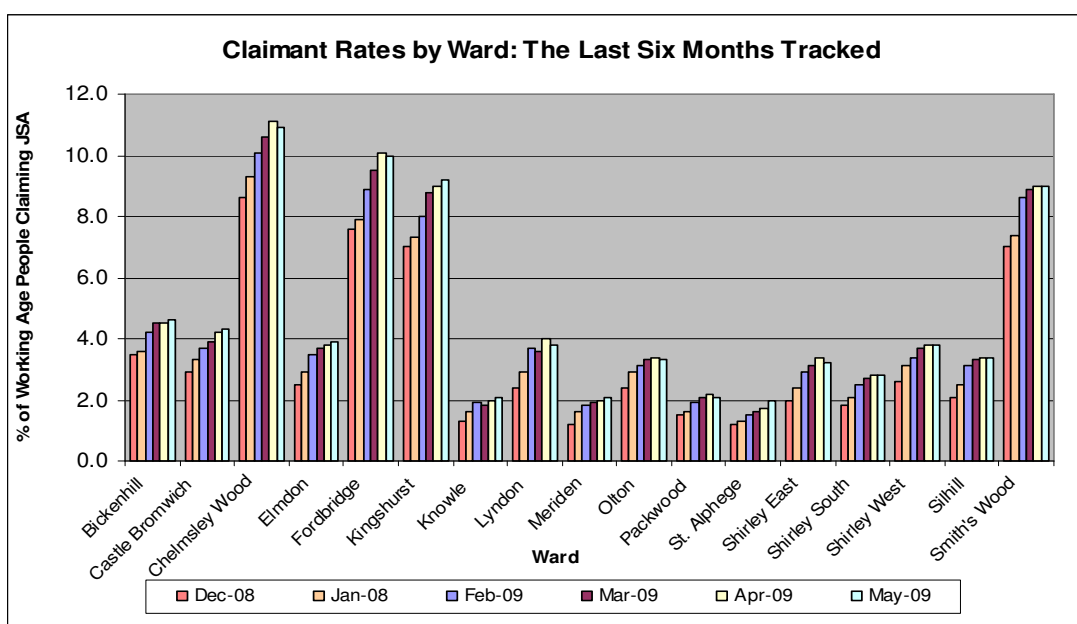
New Ward Data for Solihull

The numbers of people unemployed for each ward (new ward boundaries as of 2004) are based upon the number of Job Seeker's Allowance claims derived from the administrative records of Jobcentre Plus. However, the rates have been calculated using estimated working age population figures from the 2001 census as census data for the new ward boundaries is not yet available, therefore the rates for each ward may not be entirely accurate.

	Male Numbers	Male Rates %	Female Numbers	Female Rates %	Total Numbers	Total Rates %
Bickenhill	280	7.5	93	2.6	373	5.1 ▲
Blythe	137	3.7	78	2.2	215	3.0 ◀
Castle Bromwich	231	6.1	87	2.5	318	4.4 ▲
Chelmsley Wood	637	16.8	200	5.3	837	11.1 ▼
Dorridge & Hockley Heath	63	2.1	33	1.2	96	1.6 ▼
Elmdon	186	5.0	73	2.1	259	3.6 ▲
Kingshurst and Fordbridge	543	14.3	187	4.8	730	9.5 ◀
Knowle	88	2.7	42	1.4	130	2.1 ▲
Lyndon	207	5.2	85	2.3	292	3.8 ▲
Meriden	95	2.5	43	1.2	138	1.9 ◀
Olton	169	4.9	54	1.7	223	3.4 ▼
Shirley East	134	3.3	66	1.7	200	2.5 ▼
Shirley South	164	4.8	62	1.9	226	3.4 ◀
Shirley West	201	5.7	74	2.3	275	4.1 ▲
Silhill	121	3.3	62	1.8	183	2.6 ▲
Smith's Wood	524	17.5	197	7.1	721	12.5 ▼
St Alphege	280	2.6	44	1.1	141	1.8 ▲

Pre 2004 Ward Boundary Data

	Male Numbers	Male Rates %	Female Numbers	Female Rates %	Total Numbers	Total Rates %
Bickenhill	302	6.5	104	2.4	406	4.6 ▲
Castle Bromwich	231	6.0	87	2.5	318	4.3 ▲
Chelmsley Wood	538	16.5	172	5.3	710	10.9 ▼
Elmdon	160	5.6	56	2.1	216	3.9 ▲
Fordbridge	401	14.9	126	4.9	527	10.0 ▼
Kingshurst	317	13.3	121	5.1	438	9.2 ▲
Knowle	85	2.6	44	1.5	129	2.1 ▲
Lyndon	156	5.0	68	2.4	224	3.8 ▼
Meriden	104	2.7	46	1.4	150	2.1 ▲
Olton	169	4.7	54	1.7	223	3.3 ▼
Packwood	132	2.6	72	1.5	204	2.1 ▲
St. Alphege	111	2.5	58	1.5	169	2.0 ▲
Shirley East	150	4.2	74	2.2	224	3.2 ▼
Shirley South	204	3.8	82	1.7	286	2.8 ◀
Shirley West	201	5.4	74	2.1	275	3.8 ◀
Silhill	168	4.4	77	2.2	245	3.4 ◀
Smith's Wood	448	13.5	165	4.7	613	9.0 ◀



Unemployment figures released for May 2009 show that 8 (pre 2004) wards have recorded increased unemployment rates during the last month, in 5 wards the unemployment rate fell and in 4 wards the unemployment rate stayed at the previous month's level. In Solihull the overall claimant count has risen by 9 people since April 2009.

The highest unemployment rate increase of 0.3% was recorded in St Alphege ward, whilst Chelmsley Wood, Lyndon and Shirley East recorded decreases of 0.2% in their wards unemployment rates.

There has been an increase of 775 job vacancies in Solihull, notified to employment service job centres in May 2009, making a total of 1,931 job vacancies.

UK, West Midland regional and Solihull's unemployment rates remained the same as in the previous month, with Solihull's rate staying at 4.4%. This figure is 1% below the regional rate and 0.3% above the national rate.