



Peacock

A unmistakable, large Butterfly with "peacock" eyes on it's wings. Found near nettles (the caterpillar's food - plant), on bramble, and in formal flower gardens.

Small White

Can be yellow



Small White is less likely to be seen in woodland.

"Cabbage Whites"

The main difference between these two species' is size.

They can be found in most habitats, although the

Large White

More extensive black tip



Photo N. J. Farrner

Green-veined White

A common white Butterfly. More likely to be found in or near to woodland than the Small White.



Dark "shadows" on veins

Orange Tip

A species of wet meadows & woodland edge.



Only the male has orange tips

Brimstone

An uncommon Butterfly in the Borough. preferring open woodland. The male is a "buttery-yellow" colour and this is probably where the name "Butterfly" originates.

Look for them in formal flower gardens in late summer.



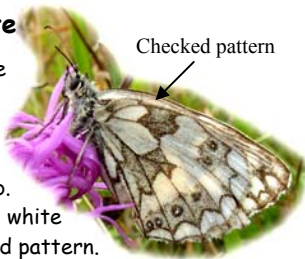
leaf shaped

Marbled White

This species is a new-comer to the Borough, and is expanding it's range so should be seen more frequently in the future.

Look in meadows and scrub.

It is very distinctive with it's black & white checked pattern.



Checked pattern

Common (or Icarus) Blue

Found in meadows where Bird's-foot Trefoil grows.

Not as common as it's name suggests.

The alternative name of "Icarus Blue" comes from it's Latin name *Polyommatus icarus*.



Holly Blue

This species has two distinct broods, eggs are laid on Holly in the spring and on Ivy in the summer. Wide spread favouring open woodland and old hedgerows. In good years the Holly Blue can be found in gardens.



Purple Hairstreak

This species spends most of it's life high up in Oak trees. It is for this reason that they are rarely seen. Wide spread and probably common in the borough. Check Oaks for the silvery shimmer and if you are lucky one may come down to feed on the nectar of thistles.



Small "tail"

Large Skipper

A Butterfly of grassy places, favouring unmanaged areas of scrub. Not found in large numbers anywhere in the Borough.



Patterned wings

Small Skipper

These two species' are almost identical. They are both found in the same grassy habitats and their flight periods are similar so caution is needed in identification.



Plain wings

Essex Skipper

The Essex Skipper is a newcomer to the area. The main difference between these two species' is the colour of their antennae tips. Small has orange/brown tips. Essex has jet black tips !!

Painted Lady

This large, attractive Butterfly is a common site on Buddleia, but not every year. This Species migrates from Europe and when the weather is right, many thousands make the journey to Britain..



For underwing detail see front cover

Red Admiral

This species also migrates, but it also over winters so they can be found every year along woodland rides and on Bramble. A common site in formal gardens in summer. Caterpillars feed on Stinging Nettles.



Small Tortoiseshell

Probably our most familiar Butterfly. Found through out the Borough. This species regularly hibernates in garden sheds and cool rooms in houses. Their caterpillars Can sometimes be found in large numbers, feeding on Stinging Nettles.

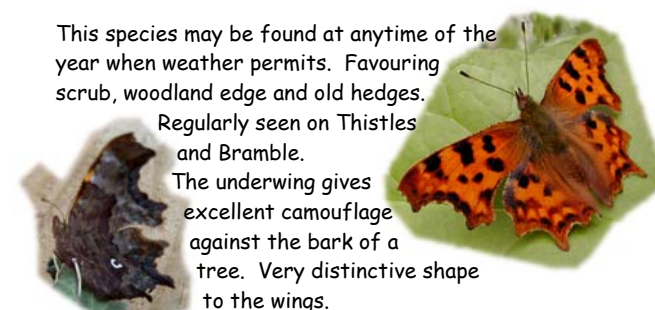


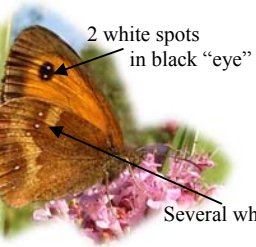
Comma

This species may be found at anytime of the year when weather permits. Favouring scrub, woodland edge and old hedges.

Regularly seen on Thistles and Bramble.

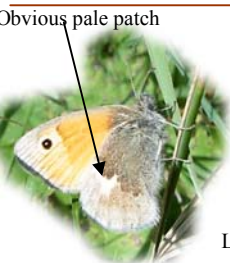
The underwing gives excellent camouflage against the bark of a tree. Very distinctive shape to the wings.





Gatekeeper

This is a grassland species, preferring some scrub or old hedgerows. Can occur in very large numbers in favoured habitat.



Small Heath

Found in open, warm grassland. Uncommon in the Borough. Never rests with wings open.

Like a miniature Meadow Brown

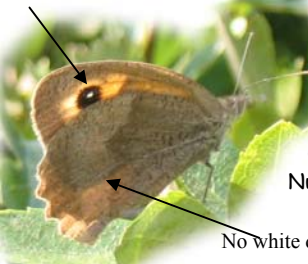
Usually single white spot in black "eye"

Meadow Brown

A common species of grassy places.

Found all over the Borough.

Can occur in large numbers.



No white dots or pale patch

Ringlet

All brown wing

The darkest of the "brown" butterflies, having no orange colour in the wings. A short flight period and timed emergence mean that this species is often overlooked. Scrub & bramble in grassy areas.



Flight Periods

The purpose of the following table is to allow an instant check of the times of year that butterflies are "on the wing". It is obvious that some species have a very short flight period whilst others have very long or even two distinct periods. There will be some slight variation from year to year depending on weather/temperature.

Species	Flight Period						
	A	M	J	J	A	S	O
Small Skipper							
Essex Skipper							
Large Skipper							
Common Blue							
Holy Blue							
Purple Hairstreak							
Small White							
Large White							
Green-veined White							
Orange Tip							
Brimstone							
Marbled White							
Peacock							
Red Admiral							
Painted Lady	Migrant – may occur anytime some years						
Small Tortoiseshell							
Comma							
Small Copper							
Gatekeeper							
Small Heath							
Meadow Brown							
Ringlet							
Speckled Wood							
Month. Apr - Oct	A	M	J	J	A	S	O



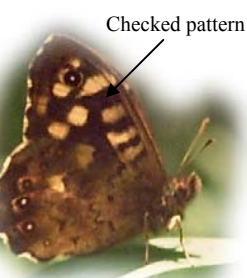
BUTTERFLIES of the Borough

Butterflies are amongst the most familiar of Insects yet the identification is often hindered by "too much" information - many books include several pages of similar looking butterflies that do not occur in Britain. The purpose of this leaflet is to remove the confusion and to concentrate on the 23 species' of Butterflies noted in our Parks in 2003/2004. By checking the flight periods and brief habitat notes it is possible to "predict" the species that might be seen. Further information can then be taken from "the books" as necessary. This leaflet should add to the enjoyment of a stroll in the park.

Other Species'

Many Invertebrate species' are expanding their range (possibly due to climate change) and butterflies are no exception. Marbled White has been seen in the borough and Brown Argus may be in the area. Other Migrant species' may also turn up such as Clouded Yellow.

All Text and Photographs by Gary A. Farmer unless stated



Speckled Wood

Wide spread along woodland edge, open woodland and hedgerows. Often seen basking on a sunny leaf or spiralling upwards with a rival male. Although common, never found in large numbers.



This attractive little butterfly is never seen in large groups, and is uncommon in the borough.



Small Copper

Found in areas of long grass where the Caterpillars' food-plant (Sorrel) grows.