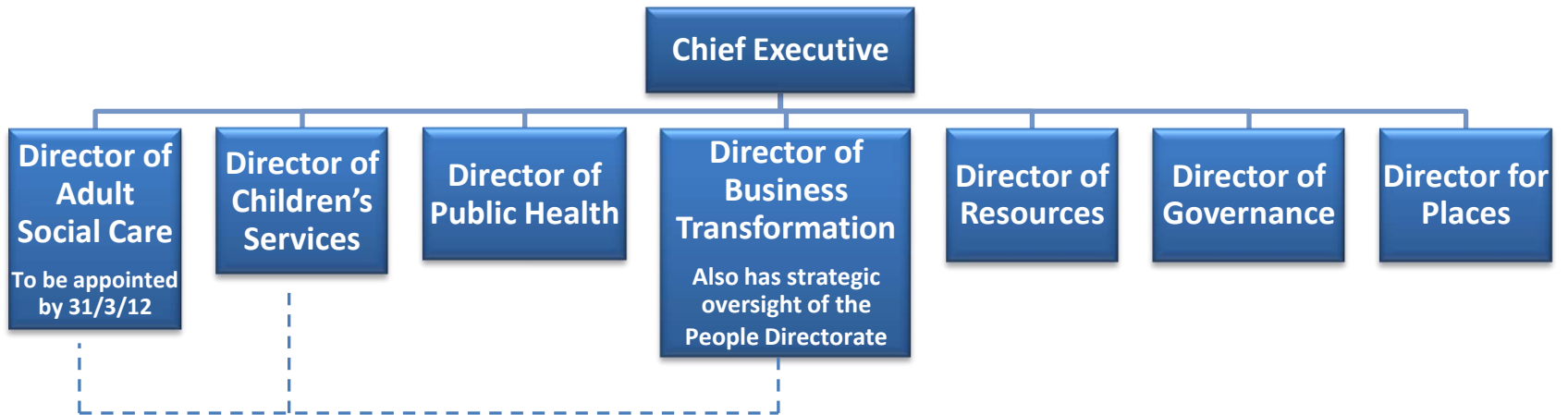
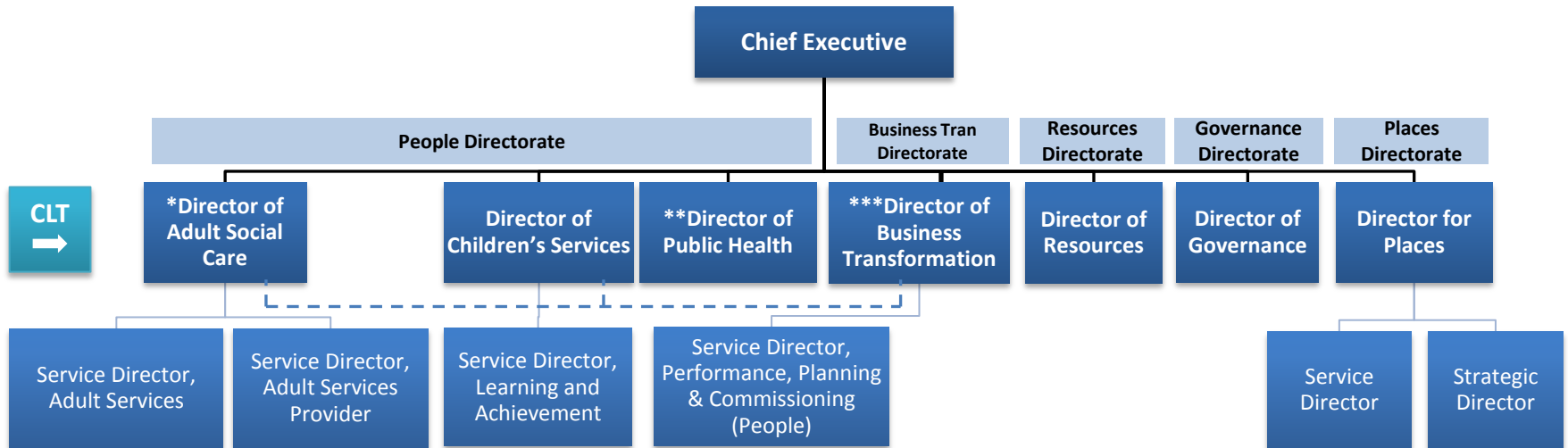


Corporate Leadership Team (January 2012)



Corporate Structure (January 2012)



*To be appointed by 31/3/12

**Public Health transfers to the Council in shadow form on 1/4/12 and fully on 1/4/13

***Has strategic oversight of the People Directorate

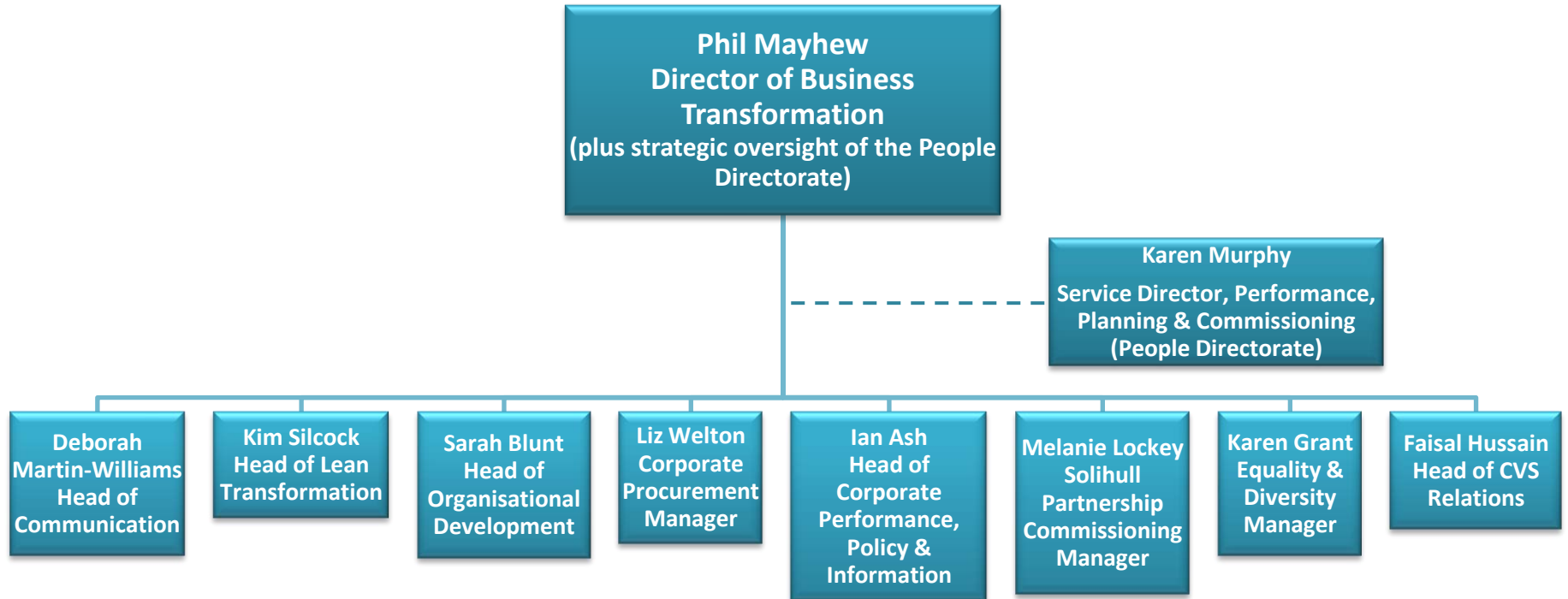
People Directorate (January 2012)



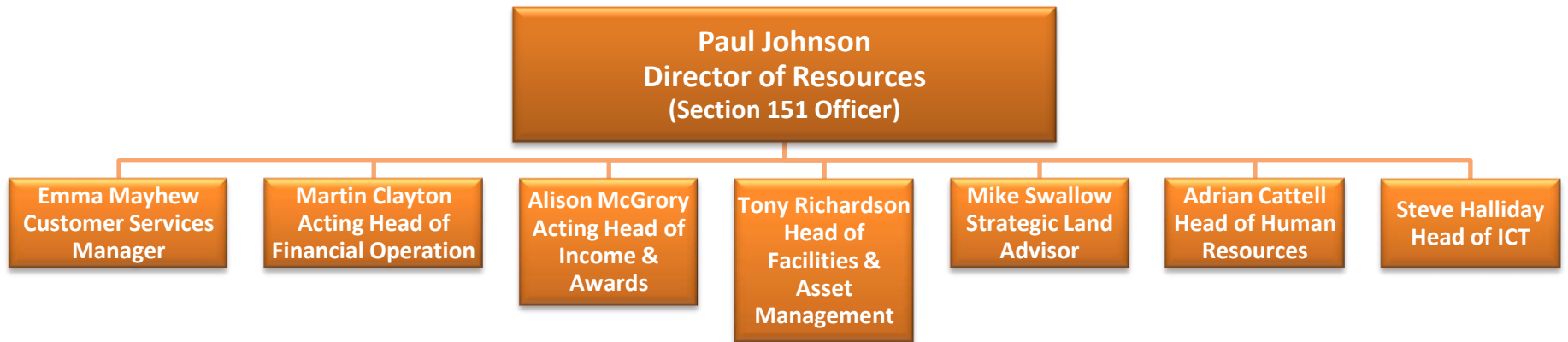
Places Directorate (January 2012)
Interim structure pending completion of the Places Reshaping exercise



Business Transformation Directorate (January 2012)



Resources Directorate (January 2012)



Governance Directorate (January 2012)

