

COVID-19 – Solihull Data Summary, 15TH October 2021

Summary

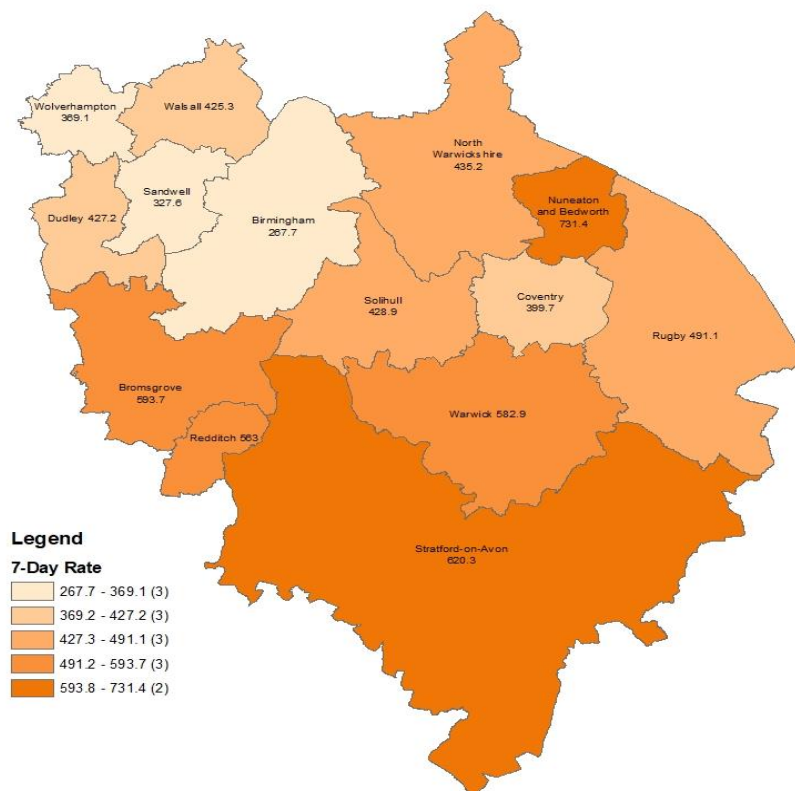
- The number of new cases was **928** in the 7 days to **8TH October**, a rate of **428.9** per 100,000 population, a decrease of **8%** on the previous 7 days.
- Information about Covid vaccine uptake by age group and electoral ward is given in this bulletin.
- At **14TH October**, there were **219** Covid positive inpatients in University Hospitals Birmingham NHS Foundation Trust hospitals, compared with **188** on **7TH October**.
- There were **2** Covid related deaths of a Solihull resident in **w/e 1ST October** (deaths registered up to **9TH October**). (Source: ONS).

Weekly Cases and Rates

COVID-19 cases are identified by taking specimens from people and sending them to laboratories around the UK to be tested. If the test is positive, this is referred to as a lab-confirmed case.

New Cases

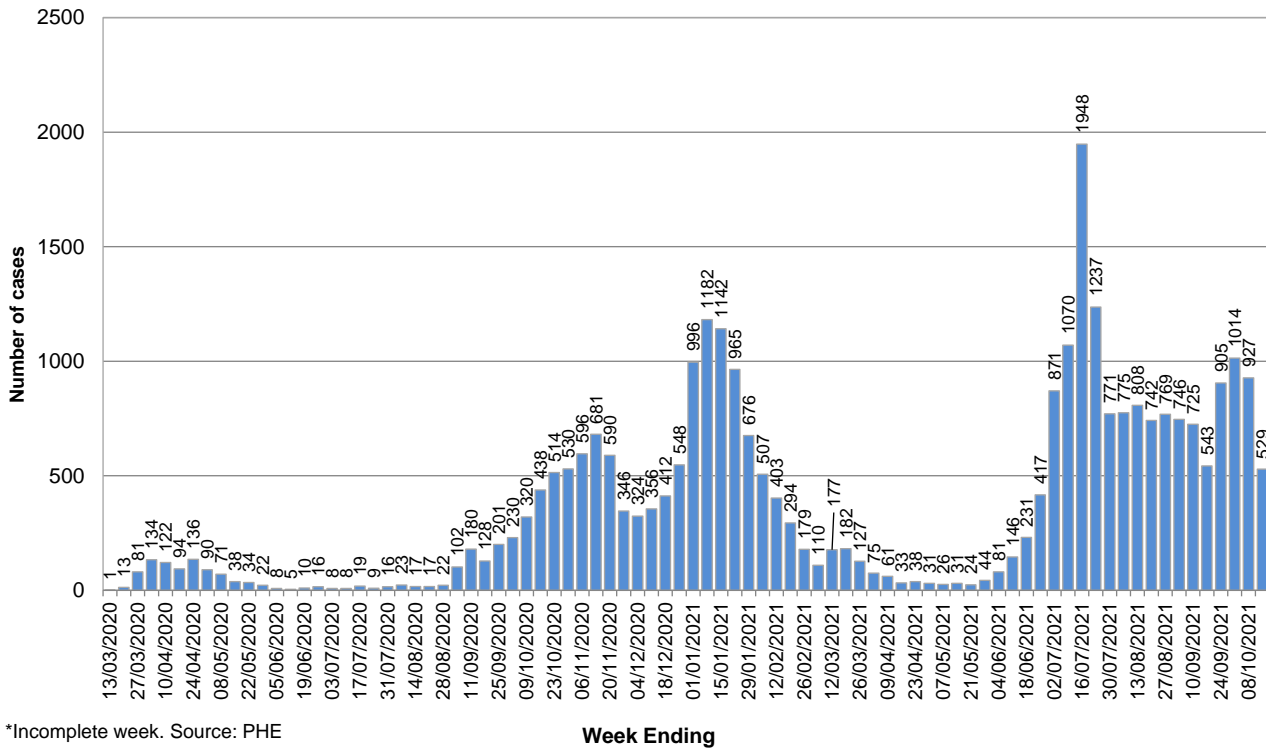
In the 7 days to **8TH October**, Solihull had **928** new lab-confirmed cases, a rate of **428.9** per 100,000 population. This was a decrease of **8%** on the previous 7 days.



Total Cases

The breakdown of cases in Solihull by week over time is shown below. It should be noted that case numbers prior to May 2020 are not directly comparable as there was much more restricted access to testing at that time.

Number of weekly Covid-19 cases in Solihull since 13 March (week ending)

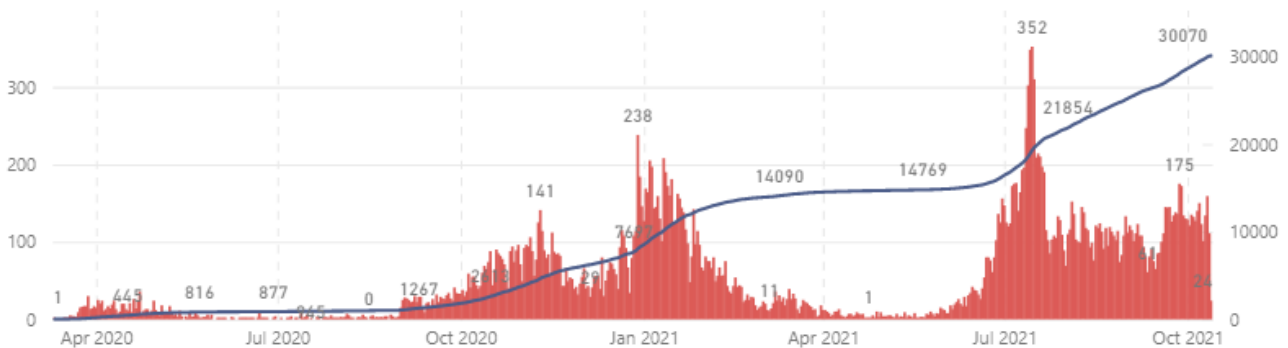


*Incomplete week. Source: PHE

The total number of lab-confirmed cases in Solihull since the start of the pandemic was **30070** at **13TH October**. The cumulative number of cases over time is shown in the graph below; the full-sized version of this chart can be found at <https://coventry-city-council.github.io/covid-19/dashboard/#solihull>

All ages

● New cases by specimen date — Cumulative cases by specimen date



Number of New Cases by Ward

The table below shows the number of new lab-confirmed cases by ward for the 14 days **between 27TH September and 10TH October 2021**. The number of new cases in the previous 14 days is also shown for comparison. It should be noted that, as electoral wards are relatively small areas, the wards with highest and lowest number of cases are liable to change.

Ward Name	Number of cases 13 TH – 26 TH September	Number of cases 27 TH September – 10 TH October
Bickenhill	150	153
Blythe	95	124
Castle Bromwich	92	133
Chelmsley Wood	88	141
Dorridge & Hockley Heath	102	95
Elmdon	73	86
Knowle	89	105
Kingshurst & Fordbridge	100	119
Lyndon	76	78
Meriden	129	159
Olton	54	80
Silhill	81	109
Shirley East	67	97
Shirley South	64	89
Shirley West	79	124
St Alphege	116	86
Smith's Wood	125	124
Total	1580	1902

Source: Public Health England Data, lab confirmed cases

Reproduction Number (Rt)

The reproduction number is the number of people that one infected person will pass on a virus to, on average. If the reproduction number is higher than one, then the number of cases increase exponentially. If the number is lower the disease will eventually stop spreading, as not enough new people are being infected to sustain the outbreak. The current reproduction number (Rt) for the Midlands region can be found at <https://www.gov.uk/guidance/the-r-number-in-the-uk>.

Vaccinations

The table below shows uptake of the first dose of the Covid-19 vaccine by age group and electoral ward at 11 October 2021. Data is on Birmingham and Solihull CCG registered patients who are resident within Solihull.

Ward Name	Age 70+		Age 60-69		Age 50-59		Age 40-49		Age 30-39		Age 20-29		Age Under 20	
	Vaccinations	Coverage	Vaccinations	Coverage	Vaccinations	Coverage	Vaccinations	Coverage	Vaccinations	Coverage	Vaccinations	Coverage	Vaccinations	Coverage
Bickenhill	1,936	96.8%	1,347	93.9%	1,872	90.6%	1,425	85.3%	1,276	73.2%	1,051	67.2%	419	62.8%
Dorridge and Hockley Heath	1,958	98.3%	1,326	96.4%	1,683	95.1%	1,438	92.1%	896	83.7%	865	80.6%	550	80.5%
Knowle	2,449	98.4%	1,362	96.1%	1,499	94.4%	1,327	91.3%	825	82.1%	687	77.3%	514	82.1%
Meriden	2,408	98.2%	1,549	96.4%	1,956	94.5%	1,522	90.5%	989	82.8%	977	82.2%	422	73.3%
Castle Bromwich	2,000	97.0%	1,511	95.2%	1,670	91.5%	1,061	86.4%	1,089	74.3%	876	68.9%	289	63.2%
Chelmsley Wood	1,612	94.3%	1,118	92.1%	1,676	86.6%	1,185	77.9%	1,360	64.0%	1,034	56.1%	341	51.4%
Kingshurst and Fordbridge	1,410	95.3%	1,095	91.9%	1,666	87.9%	1,229	75.9%	1,422	64.9%	1,079	57.6%	352	50.2%
Smith's Wood	1,337	95.2%	1,057	92.7%	1,555	86.2%	1,264	79.7%	1,309	62.7%	1,059	57.2%	309	45.1%
Blythe	1,803	96.7%	1,426	94.2%	1,904	89.4%	1,841	85.2%	1,754	78.7%	1,238	76.0%	412	62.8%
Elmdon	1,943	96.7%	1,393	94.8%	1,638	91.1%	1,314	83.1%	1,345	76.0%	994	70.7%	346	61.2%
Lyndon	1,826	96.1%	1,404	93.9%	1,793	89.2%	1,502	84.1%	1,508	73.3%	1,088	64.9%	366	56.4%
Olton	2,298	96.1%	1,520	94.7%	1,835	91.5%	1,367	85.1%	1,214	76.9%	1,074	75.6%	417	67.7%
St Alphege	2,329	96.6%	1,747	94.0%	2,007	90.7%	1,547	84.7%	1,021	77.1%	1,023	76.7%	497	73.3%
Shirley East	1,820	96.6%	1,184	93.4%	1,683	92.1%	1,558	85.4%	1,200	77.1%	914	73.7%	422	65.9%
Shirley South	2,349	96.0%	1,429	93.6%	1,648	91.4%	1,548	83.9%	1,304	78.0%	955	73.5%	373	70.0%
Shirley West	1,905	96.6%	1,386	94.6%	1,624	90.5%	1,455	85.4%	1,591	78.4%	1,083	73.2%	354	63.0%
Silhill	2,321	96.3%	1,301	94.6%	1,602	89.8%	1,540	78.6%	1,356	71.0%	1,004	73.2%	382	65.7%
Total	33,704	96.6%	23,155	94.3%	29,311	90.7%	24,123	84.3%	21,459	74.0%	17,001	69.6%	6,765	64.2%

The following table shows uptake of the second dose of Covid-19 vaccine by electoral ward and age group.

Ward Name	Age 70+		Age 60-69		Age 50-59		Age 40-49		Age 30-39		Age 20-29		Age Under 20	
	Vaccinations	Coverage	Vaccinations	Coverage	Vaccinations	Coverage	Vaccinations	Coverage	Vaccinations	Coverage	Vaccinations	Coverage	Vaccinations	Coverage
Bickenhill	1,922	96.1%	1,331	92.8%	1,841	89.1%	1,362	81.6%	1,162	66.6%	913	58.4%	172	25.8%
Dorridge and Hockley Heath	1,958	98.3%	1,320	96.0%	1,666	94.1%	1,415	90.6%	850	79.4%	782	72.9%	189	27.7%
Knowle	2,440	98.1%	1,355	95.6%	1,484	93.5%	1,309	90.1%	784	78.0%	626	70.4%	163	26.0%
Meriden	2,399	97.8%	1,540	95.8%	1,936	93.5%	1,477	87.8%	928	77.7%	869	73.1%	185	32.1%
Castle Bromwich	1,997	96.9%	1,500	94.5%	1,640	89.8%	1,015	82.7%	991	67.6%	750	59.0%	134	29.3%
Chelmsley Wood	1,594	93.3%	1,096	90.3%	1,632	84.3%	1,100	72.3%	1,222	57.5%	847	45.9%	160	24.1%
Kingshurst and Fordbridge	1,393	94.1%	1,080	90.6%	1,613	85.1%	1,157	71.4%	1,255	57.3%	886	47.3%	160	22.8%
Smith's Wood	1,333	94.9%	1,035	90.8%	1,492	82.8%	1,184	74.7%	1,156	55.4%	885	47.8%	147	21.5%
Blythe	1,796	96.4%	1,420	93.8%	1,882	88.4%	1,803	83.4%	1,636	73.4%	1,105	67.9%	186	28.4%
Elmdon	1,922	95.6%	1,384	94.2%	1,619	90.0%	1,274	80.5%	1,241	70.2%	878	62.5%	147	26.0%
Lyndon	1,806	95.1%	1,389	92.8%	1,763	87.7%	1,433	80.2%	1,376	66.9%	929	55.4%	172	26.5%
Olton	2,291	95.8%	1,507	93.9%	1,794	89.5%	1,324	82.4%	1,115	70.6%	952	67.0%	188	30.5%
St Alphege	2,328	96.6%	1,738	93.5%	1,991	89.9%	1,519	83.2%	973	73.5%	910	68.3%	234	34.5%
Shirley East	1,817	96.4%	1,174	92.7%	1,652	90.4%	1,513	82.9%	1,126	72.4%	791	63.7%	190	29.7%
Shirley South	2,336	95.5%	1,420	93.0%	1,629	90.3%	1,501	81.3%	1,213	72.6%	861	66.2%	179	33.6%
Shirley West	1,889	95.8%	1,374	93.8%	1,596	88.9%	1,395	81.9%	1,484	73.1%	951	64.3%	157	27.9%
Silhill	2,315	96.1%	1,290	93.8%	1,573	88.2%	1,476	75.3%	1,269	66.5%	899	65.5%	172	29.6%
Total	33,536	96.2%	22,953	93.5%	28,803	89.1%	23,257	81.3%	19,781	68.2%	14,834	60.8%	2,935	27.8%

Increasing uptake in areas where fewer people have been vaccinated is a key local priority and area of focus for the local NHS & council, working with local communities. You can check if you are currently eligible for a vaccine and book an appointment at the following website: <https://www.nhs.uk/conditions/coronavirus-covid-19/coronavirus-vaccination/book-coronavirus-vaccination/>

Hospital Inpatients

At **14TH October**, there were **219** Covid positive inpatients in University Hospitals Birmingham NHS Foundation Trust hospitals, compared with **188** on **7TH October**. This includes **25** in Intensive Treatment / High Dependency Units, compared with **22** on **7TH October**. This will include a number of Solihull residents although the majority will be Birmingham residents (source: UHB Inpatient reports, **7TH and 14TH October**)

University Hospitals Birmingham NHS Foundation Trust publish information several times a week at: <https://www.uhb.nhs.uk/coronavirus-staff/daily-statistics.htm>

Weekly Death Registrations and Occurrences (latest data published covers deaths occurred up to **1ST October** and registered up to **9TH October 2021**)

As of the week ending **1ST October**, there have been **686** deaths of Solihull residents that mention COVID-19. **2** COVID-19 deaths occurred in the latest week.

Further information is available on the Office for National Statistics death registrations page.

Further Information

<https://coventry-city-council.github.io/covid-19/dashboard/>

This dashboard, developed by Coventry City Council, contains a variety of useful information and allows users to compare rates in Solihull with other areas.

The next data summary will be published on **Friday 23RD October**.

15TH October 2021