



Assistive Technology &
Devices for Home Use

Hearing aids, cochlear implants or bone conduction hearing implants can be connected to many different products including smartphones, tablets, TV and radio aids. There are various technologies that can help you do this:

- Direct input audio leads
- Bluetooth connection
- Digital Streaming
- T-Setting
- Implant Accessories

Contact your **Teacher of the Deaf** on 0121 704 6690 for advice on technology or why not:

Visit **NDCS** for more information and loan service at www.ndcs.org



What do you use at home to help your child enhance their listening experience?

I wear **Hearing aids** and I attach shoes and a **Direct Input Lead** for listening to my music – instead of over the ear headphones

Streamers can do this job, too.



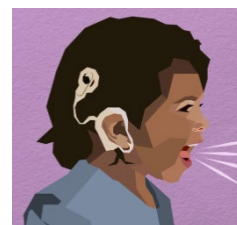
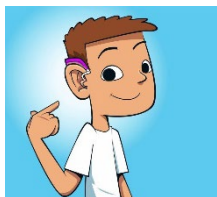
Direct Input Lead







I use **Bone Anchored Hearing Aids (BAHA)**. There are accessories (e.g. **Oticon Streamer**) you can connect to enhance your listening experience when playing games on your iPad.





Oticon Streamer

I have **Cochlear Implants** and use an accessory called a **Mini Mic** to hear the Television better. I can also use this to hear speech better.



Device	Types of Assistive Technology	
Hearing Aids 	<ul style="list-style-type: none"> • Direct input audio leads for use with (phones, tablets, laptops and other electronic devices) • Radio aid systems 	
Cochlear Implants 	<ul style="list-style-type: none"> • Direct input audio leads • Mini mics • Radio aid systems • TV Streamers • Phone Clips 	
Bone Anchored Hearing Aids (BAHA) 	<ul style="list-style-type: none"> • Streamers to connect to audio sources • Radio aid systems • Direct input (audio) leads 	

<p>Other things you can do at home to support your child</p>	<p>Subtitles on television Subtitles on DVDs Subtitles on YouTube videos (settings) Subtitled cinema options: www.yourlocalcinema.com</p>	
<p>Alerting devices to use in the home</p>	<p>There is a range of alerting devices that can be purchased to make life at home easier and more independent for your child: alarm clocks, smoke & fire alarms as well as a variety of door bells suitable for hearing loss.</p> <p>For more support with assistive technologies for 18+ see: https://www.bid.org.uk/solihull/solihull-sensory-service</p>	
<p>Support with Funding</p>	<p>Funding support may be available to help purchase assistive devices and technology for home use (see Funding Section). Please see our other pages on the local offer.</p>	