

# What we can recycle

Please make sure your recycling is clean before putting it in your mixed recycling bin

Clean paper, card, cardboard, magazines, newspapers, boxes, juice and milk cartons



Rinsed plastic bottles, plastic yoghurt pots, plastic food punnets, plastic food tubs and trays



Rinsed tins and cans  
Aerosol cans and clean foil trays



Please place  
glass into  
your glass  
recycling bin

**'If in doubt—leave it out'**

# What we can't recycle

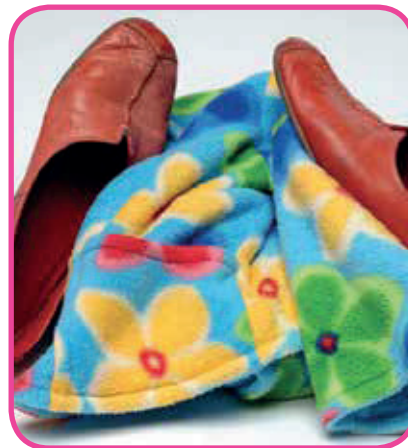


Plastic film, plastic wrappers,  
Polystyrene, Cellophane,  
Crisp packets,  
Sweet wrappers padded,  
envelopes, bubble wrap, Pouches  
and Plastic bags

Please do not place any of these items into the recycling  
**'If in doubt—leave it out'**



Household  
rubbish  
e.g. nappies



Clothes and  
shoes



Tissues/kitchen  
roll



Hard plastics e.g.  
toys, CDs, plant  
pots



Paint pots



Food, residue,  
e.g. greasy pizza  
boxes



Glass in the mixed  
recycling bin