

Solihull Parents' Network

Christmas 2022 Family Events



Images courtesy of (from clockwise) West Midlands Safari Park, Solihull BID and Warwick Castle

Solihull Family Information Service

Call: 0800 389 8667

Email: familyinfo@solihull.gov.uk

Web: www.solihull.gov.uk/familyinfo

Guidance: *venues listed below may have their own safety guidelines in place. Therefore, we strongly recommend that you take time to familiarise yourself with any guidelines and keep checking online for any further updates before visiting.*

Ackers Adventure Ski Centre

Golden Hillock Road, Birmingham B11 2PY

Our festive tobogganing is back!



Enjoy 30 minutes of exclusive use of our toboggan slope for your group of up to six people with a delicious hot chocolate each. Book an evening session to make your experience magical with our festive lights.

Please note: tickets must be booked in advance via our website.



Age: 3-12 years but over 12s are more than welcome to have a go!
Dates: Throughout December
Times: Please see our website for available times and further booking details
Cost: £39 per group (up to six people)
Website: www.ackers-adventure.co.uk



Knowle and Dorridge Lions Club

Dorridge Village Hall Grange Rd, Dorridge, Solihull B93 8QA, 01564 772487

2022 Lions Festive Walk

Knowle and Dorridge Lions are inviting one and all to join them for their Lions Festive Walk on December 27th.

The annual event will start at Dorridge Village Hall and there will be a choice of a three- or six-mile sign-posted route.

In 2022, there will be no online registration. Walkers are asked to print and complete their registration form to be handed in on the day. You can also download a Lion Hunt entry form.

All will pass through the surrounding countryside using country lanes and public footpaths. Young walkers will be able to join the Lions Safari Hunt on the three-mile walk, with a prize awarded for a correct entry (knowleanddorridgelions.com - [Festive Walk](#)).

Walkers can register and begin their routes from 9:30 am until 1pm. You will be able to collect maps from the Lions gazebo in front of Dorridge Village Hall.

Dogs are welcome if kept on a lead and we request that all mess is disposed of carefully. There are one or two stiles where dogs may need to be lifted. The Dorridge Cricket Club will be the finishing point.

A selection of hot and cold refreshments will be available in the clubhouse.



Age: All ages
Date: Tuesday 27th December
Times: 9am through to 1pm
Cost: Entry as always is free. However, we would appreciate a donation to Knowle and Dorridge Lions
Contact: Please visit our website or email for further information
Email: info@knowleanddorridgelions.com
Website: www.knowleanddorridgelions.com



Solihull

BID - Festive Fun

Solihull Town Centre



SOLIHULL'S FESTIVE FEAST

Take a break from that hectic Christmas shopping and enjoy mulled wine, street food and live music at this year's Solihull Festive Feast! From Monday, December 19th to Friday, December 23rd, RR Events' Continental Street Market traders will be joining forces with local and regional producers as part of the Festive Feast event. Open daily between 10am - 6pm! Shoppers will be treated to flavours from around the world with a wide range of hot foods to sample and cold items to take home for that Christmas pantry to share with your nearest and dearest.





Warwick Castle

Warwick, Warwickshire CV34 6AH

Open-air ice rink

The Castle's east front transforms into a magical skating rink for the ultimate festive experience on the ice. Glide around our ice rink right underneath the majestic Guy's Tower. As you skate, enjoy the sound of your favourite Christmas classics.

Parent and Child Ice-Skating!

Looking for a magical mid-week Christmas activity? From just £11 per person, skate underneath towers and turrets at Warwick Castle with a parent and child ice-skating ticket.

Stories with Santa

Make family memories you'll never forget this Christmas. Santa's elves will welcome you to the staterooms for an interactive workshop full of Christmas magic. After the workshop, enter the cosy castle library for a story of Yuletide hope and joy with Santa and Mrs Claus. Whether you're experiencing Stories with Santa for the first time or it's a family tradition, you're sure to feel the magic of Christmas.

Stories with Santa tickets £31 and includes castle entry until Saturday 24th December 2022 (limited tickets available), Santa Sleepovers are from £269 until Friday 23rd December 2022

After dark trail

Located in Warwickshire and close to Birmingham, our Christmas light trail is one of the top Christmas events in the Midlands. Don't miss this rare opportunity to see Warwick Castle in the evening. As the trail glistens and glows, you're sure to see the castle and its grounds in a different light.

Watching the winter sun set beneath the walls of Warwick Castle is one of the most enchanting sights you will see in 2022. The night sky is filled with an array of twinkling lights. From a Nutcracker inspired entrance to displays of dancing light on the castle walls, there is something for the entire family, young and old alike. With a fully accessible route, you won't want to miss the best Christmas experience in the Midlands.

Light Trail tickets from £15.50 or from £25.50 when combined with Castle entry.

Age: All ages
Dates: Available until Monday 2 January 2023
Contact: See website for details
Email: customer.information@warwick-castle.com
Website: www.warwick-castle.com

The Core Theatre Solihull

Theatre Square, Touchwood, Homer Road, Solihull B91 3RG



Beauty and the Beast Pantomime (very limited availability)

In the pretty French village of Mont Sue-Relle, bookish Belle is ready to start a new chapter and find some adventure.

However Belle, and her friend Jacques and his mum, Betty the local bell ringer, get much more than they bargained for when they find themselves trapped inside the enchanted castle of a mysterious beast.

Will true love conquer all? Will the curse of the Enchantress ever be broken? Will Betty drop a clanger?

The award-winning Little Wolf Entertainment (*the team behind Cinderella and Robin Hood*) return with even more shimmering sets, outrageous costumes, magic and mayhem in this brand new furry-tail adventure!

You won't belle-ieve your eyes!

Dates: Friday 9th December 2022 to Monday 2 January 2023

Times: Various. See website

Cost: Tickets from £20 -£22 (£80 family ticket available on green performances)

Contact: 0121 704 6962 (Box Office)

Website: www.thecoretheatresolihull.co.uk

Beauty and the Beast Pantomime – Relaxed Performance

Following the success of our previous relaxed performance productions, we are delighted to announce our Relaxed Performance of Beauty and the Beast will be taking place at The Core Theatre on Thursday 29 December 2021 at 5.30pm.

Relaxed performances are specially adapted shows that are designed to welcome audience members who would benefit from a more relaxed environment, including those with sensory sensitivities, dementia, autism spectrum disorders, learning disorders or anyone who finds theatre visits challenging.

Alterations might include:

- House lights remain on low and doors are open for free access.
- No strobe lighting, pyrotechnics and fewer loud sound effects during the show.
- Chill out area, sensory toys and chance to arrive early to find your seats and familiarise yourself and your family with the venue, toilets and seating.
- A Relaxed Performance Guide - available prior to the show, to go through at home in preparation for the visit. Contains pictures and details of key scenes to be aware of, as well as actors names and their character traits. Also gives layout and details of toilets and staff so that those with special needs know a little more about the venue, the show and what they can expect to happen during their visit here. This is sent out free of charge to all ticketbuyers.

Please discuss the other alterations with Box Office staff at any time or view our webpage at thecoretheatre.co.uk.

We have a 'changing places' facility, wheelchair –friendly café bar and friendly staff and panto cast who will do their utmost to ensure your pantomime trip is one to remember. Park in adjacent Touchwood carpark.

To book, call Box Office on 0121 704 6962 (not on sale online)

Please also call Box Office for further details on our Carer's Card policy!



West Midlands Safari Park

Bewdley, Worcestershire DY12 1LF

Santa Safari



Join us from 25th November - 24th December for a magical festive day out for the whole family combining a four-mile winter Safari and a visit to Santa in his Grotto



With an allocated time to see Santa, you will be greeted in the Discovery Trail by one of his helpful Elves who will show you to the sleigh where you will be magically transported to the North Pole and into Santa's Grotto

Santa's Grotto is a wonderfully decorated log cabin with its own Christmas tree, festive fireplace and of course Santa himself! You can tell him what's on top of your Christmas wish list and a helpful Elf will take a picture of you together!

After meeting Santa, you will make your way to the **Elves Workshop** where children can **pick their own present**. With a wide selection of gifts to choose from the children will be spoiled

for choice!

Additionally, guests visiting this winter can experience a **Virtual Reality Santa Sleigh Ride** - a magical 4D adventure to the North Pole. Families can help Santa test out his sleigh before his big journey on Christmas Eve. Led by D.A.S.H, families will be transported across the globe and through a wintry wonderland, but as it's a test run, it could be a bumpy ride!

Age: All ages (Children under 7 must be accompanied by an adult)
Dates: Now until Saturday 24th December
Times: Please see website for details
Cost: £33.00 per adult, £33.00 per child (3 to 15 years), £13 per child (under 3 years) and £33.00 per concession.

The VR Sleigh ride can be added on for £4 per person at the time of booking.

Admission includes a Free Return Code to valid for six months, only when booking online in advance. Guests can also receive discounts for selected dates, when booking online.

Email: info@wmssp.co.uk

Website: www.wmssp.co.uk



Art at the Heart CIC

www.artattheheartcic.org



Christmas Special: How to Draw a Snow Leopard



Learn how to draw a snow leopard in two guided online drawing sessions that show you how to make a spectacular drawing.

For further details, please visit our website.

Online Via Zoom

Age: 10 to 15 years
Dates: Monday 19th December 2022 (session 1)
Friday 23rd December 2022 (session 2)
Times: 10am to 11am
Cost: £ 22.00 + £2.20 fee per child
Contact: 07772 319303
Email: admin@artattheheartcic.org
Website: www.artattheheartcic.org/events/christmas-special-how-to-draw-a-snow-leopard/

In person: The Core, Courtyard Gallery, Solihull, B91 3RG

Age: 10 to 15 years
Dates: Tuesday 20th December 2022 (session 1) 2- 3:30 pm
Thursday 22nd December 2022 (session 2) 1-2: 30 pm
Cost: £ 25.00 + £2.54 fee per child
Contact: 07772 319303
Email: admin@artattheheartcic.org
Website: www.artattheheartcic.org/events/christmas-special-how-to-draw-a-snow-leopard/

Christmas Special: How to Draw Harry Potter

Delve into the Magical world of Harry Potter; breathe magic into your illustrations inspired by Harry and his friends

Create your very own Harry Potter drawing using just a pencil and eraser- no magic wand needed! Learn how to create his likeness using shading and pencil techniques.



Workshops take place in The Core, Courtyard Gallery, Solihull, B91 3RG
For further details, please visit our website.

Age: 7 to 13 years
Date: Monday 2nd January 2022
Times: 10am to 11am
Cost: £14 +£1.68 Fee per child
Contact: 07772 319303
Email: office@artattheheartcic.org
Website: <https://www.artattheheartcic.org/christmas-2022/>

Touchwood
Solihull B91 3GJ

CHRISTMAS IN TOUCHWOOD

Sprinkle a little Touchwood this Christmas... With a dash of magic and a sprinkle of snow, Santa is back in residence this year at his brand new Christmas Grotto. He's eagerly waiting to receive wish lists and will even have an early gift for your little ones.

Touchwood's iconic polar bear, Presley, will also be making a return for the perfect festive family photo from Saturday, November 19th.



SANTA'S GROTTTO

19th November - 24th December

10am - 5pm, Monday - Friday

10am - 5pm, Saturday

11am - 5pm, Sunday

Santa is back in residence this year at his brand new Christmas grotto. He's eagerly waiting to receive wish lists and sprinkle a little festive fun. Visit the big man himself, whilst he writes in his good book at his desk. The Grotto is located in The Atrium. Tickets are £6 per child, book at www.christmasattouchwood.co.uk



Brum's Penguin Parade

Visitors are invited to flock to Birmingham city centre this Christmas to explore a stunning free family trail featuring giant penguins.

Brum's Penguin Parade follows on from the huge success of last year's Walking with the Snowman trail which proved a festive hit with families.

Fifteen specially designed penguin sculptures will be on display around the city centre from **Wednesday November 9th 2022 to Friday January 6th 2023**.

Look around and you'll be able to spot them across the city centre at locations including Bullring & Grand Central, The Mailbox, Great Western Arcade, Piccadilly Arcade, in-store at Selfridges and Primark and at all city centre attractions including Christmas in Cathedral Square, Frankfurt Christmas Market and Ice Skate Birmingham.

Each penguin has been decorated by artists inspired by the wonderful feeling of Christmas and will help to raise funds for Birmingham Children's Hospital Charity.

As well as being a magical way to get into the festive spirit the Penguin Parade will raise money for Birmingham Children's Hospital Charity. Each will have a QR code which can be scanned to make a donation.

Visitors can discover the penguins by picking up a map from city centre stores, coffee shops, Library of Birmingham, Bullring customer services and all of the Christmas attractions or downloading one from the Visit Birmingham website and then following a free walkable trail [Christmas CentralBid map \(visitbirmingham.com\)](https://www.visitbirmingham.com) .

As well as city centre retailers offering some of the best Christmas shopping in the Midlands, visitors can enjoy the Frankfurt Christmas Market, Christmas in Cathedral Square, the Big Wheel and Ice Skate in Centenary Square as well as pantomimes and festive shows at the city's theatres.

To add to the festive atmosphere Central BID has invested in new Christmas LED lights for Cannon Street and Lower Temple Street, plus Temple Row while all 29 trees in New Street will be up-lit with colour-changing lights.





Sing Choirs of Angels

Lichfield Cathedral, Lichfield

Join us for a light show with a difference by acclaimed animation team: Illuminos. Journey through the joyful story of the Nativity through the popular carol O Come All Ye Faithful, exploring its links to Lichfield.

Enjoy a spectacular light show around the Close, and on the front of the Cathedral, listen to popular carols, and head inside to soak up the atmosphere of this special time of year.

Includes access to the Christmas Tree Festival.

Dates: Friday 16th December to Tuesday 20th December

Times: From 5.30pm onwards (last entry 8.00 pm)

Costs: £30.00 per family ticket - 2 adults and 2 children (3 to 16 years)

£10.00 per adult ticket (16 years and above)

£7.50 per child ticket (3 to 16 years)

Free (under 3s).

Please note: You must ensure a free ticket is selected to ensure they are counted towards capacity

Website: [Sing Choirs of Angels - Lichfield Cathedral \(lichfield-cathedral.org\)](http://www.lichfield-cathedral.org/angels)



Castle Bromwich
Historic Gardens

Christmas Adventures with Percy

Hello

It's not always easy to actually 'welcome' Winter, but the Gardens are trying to make the most of the beautiful shapes of all the trees, the crisp clear skies and, hoorah, some new heating in the courtyard cabins. So your hot chocolate - or pumpkin soup - moments can be truly warming.

Staff and volunteers have been busy getting the site ready for Christmas. Pathways tidied, vegetables and borders cleared - but mindful of the needs of overwintering bugs and beasties, we've left habitats and greenery to help our resident wildlife make it through.

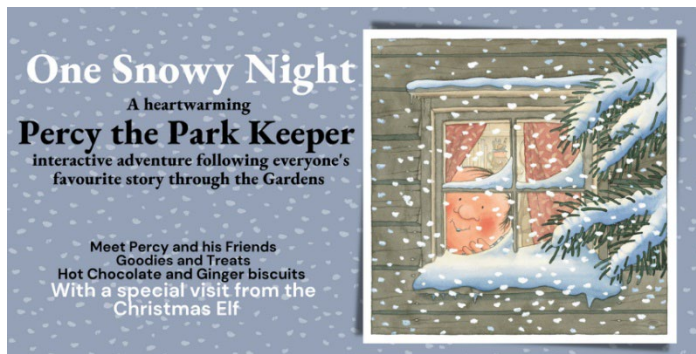
This year Courtyard Christmas tree will be decorated with bird edible decorations - come and see.

What's on for humans?

They'll be 'Mummers' fun and singing in the Courtyard on **Sunday 11th December**- join us for mulled wine, mince pies and very silly jokes.

The new self-guided family Winter trail is up and ready for visitors - try a bit of welly wanging to keep yourself warm - and we are really excited to welcome the Christmas Elf (and Percy of course) for '**One Snowy Night Family Adventures**', starting on Saturday 10th December and going through to Thursday 22nd December

Tickets are being snapped up, so book your tickets as soon as you can.



Castle Bromwich
Historic Gardens

[Read More and Book Tickets](#)

Each booked 'One Snowy Night' Adventure (approx 1 hour) includes:

- A guided outdoor adventure (in your booked timeslot),
- Indoor story time with Percy and
- A present from the Elf for each child.
- As well as all day entry to the Gardens.

Who is it for?

Ideal for 2- 9 year olds and their grown-ups. Each paying child gets a small suitably aged gift.

Dates: December Saturday 10th, Sunday 11th, Saturday 17th, Sunday 18th, Monday 19th, Tuesday 20th, Wednesday 21st and Thursday 22nd December.
Times: various please book your date and then your time.
Cost: Child Ticket £15 (includes one free adult), Member's Child ticket £12, Extra Adult £5 (must be purchased alongside child tickets)
Contact: 0121 749 4100
Website: www.castlebromwichhallgardens.org.uk



New Siblings Play Therapy & Parent Support Sessions - 1 space available for January's course

We are running a 6 week Sibling Play Therapy and Parent Carer Support Group side by side

5:30pm-6:30pm Wednesday evenings at BAYC , Birmingham B29 7EL

Note this is for a sibling age 10-13 years old, of an autistic brother or sister

Cost is for the family attending, Weekly attendance essential for the course

We have 1 family space available! For full info and to book on please contact

Contact: Joseph Jardim-Hinds 07818 303 331 jhinds@resourcesforautism.org.uk

Sensory Christmas – Sensory room - FREE

Gas Street Church St Lukes, Great Colmore Street B15 2AT

Tuesday 13th December 1:30pm to 2:15pm and 2:30pm to 3:15pm

Please email elisabeth.higgs@gasstreet.church to book your free place



TURTLE OPERA – AMAZING FREE PROJECT STARTING JANUARY

WE ARE TAKING APPLICATIONS FOR TURTLE OPERA IN BIRMINGHAM 2023.

A music and drama creative project aimed specifically at 10-14 year olds on the autism spectrum. Turtle Opera is free to all participants.

WHEN & WHERE: Nine Saturday workshops 28th January to 25th March 2023 2pm – 5pm

Birmingham Hippodrome, Hurst Street, Southside, Birmingham, B5 4TB

COST: FREE

DEADLINE FOR APPLICATIONS: To apply please fill in the on-line form full details - <https://www.turtlekeyarts.org.uk/turtleopera2023> and we will be in touch soon.

During nine Saturday workshops the group will explore a variety of creative disciplines. The autistic young people will work with a professional composer and director to work as a team to create their own group performance of music and story. This will culminate in a sharing for friends and family. The team will be supported by a project co-ordinator from Turtle Key Arts.

“I don't mean to be dramatic about it but Turtle Opera has completely changed our lives. Pascal walked out of the first session, and it was as if “Oh my god, it's ok to be autistic”. For the first time in his life he picked up the phone and he now talks regularly to his grandparents in Australia. He is a changed child.” Mother of a participant.