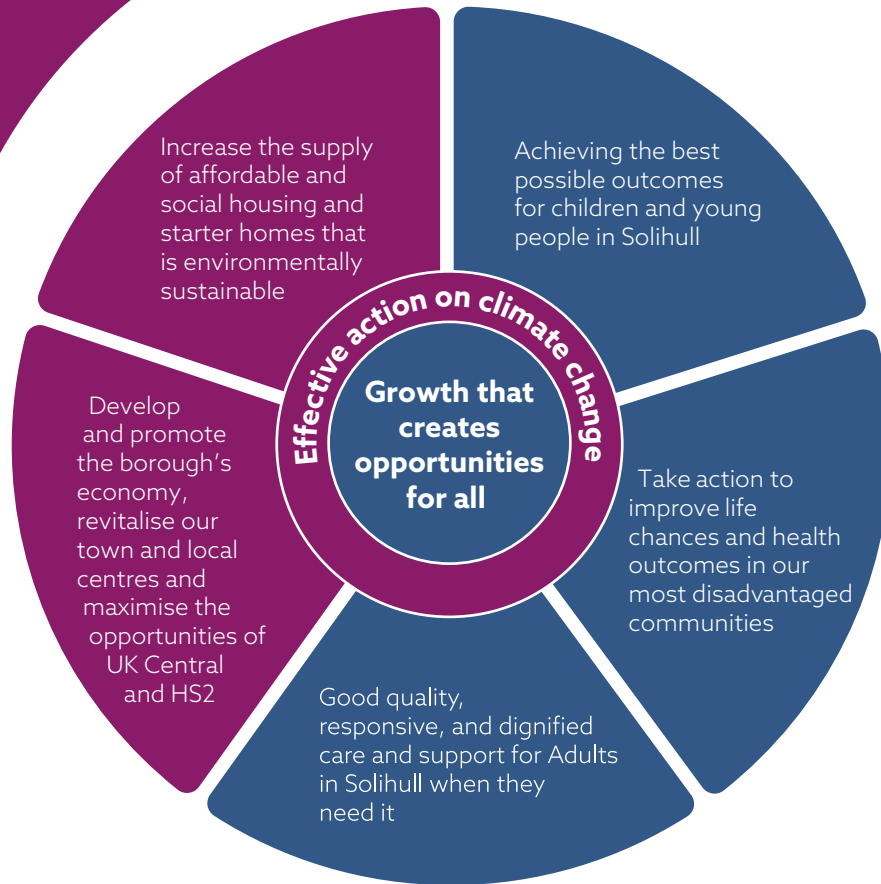


Solihull Council Plan 2020-25

Updated June 2024



Children are central to our work as a Council

People and Communities

- Improvements in early childhood development and school readiness, particularly in disadvantaged communities
- Effective early help prevents issues from escalating
- Children and vulnerable adults are safeguarded
- The Council is a good corporate parent to children in care and care experienced young people
- Improvements in skills and access to good work
- Connected, resourceful communities where people find solutions to local issues

A Strong Economy

- People, business and the environment benefit from UKC and HS2, including increased access to good work
- More environmentally sustainable affordable and social housing is built
- Safe, welcoming town and local centres where businesses can thrive
- More visitors to the borough
- The local economy is more resilient to economic shocks
- Improve transport across the borough

Actioning our Climate Change Declaration

- Community, environment and business benefiting from actions on climate change and more resilient to its impacts
- The council is net zero carbon by 2030
- The borough is net zero carbon by 2041
- An enhanced, well connected natural environment
- More people using public transport, walking and cycling
- Air quality has improved

Here2Help: Coordinates information, advice and help for all residents

Strong Foundations:

Developing a New Operating Model (Fit for the future) | Our People | Digital and Customer Services Transformation | Achieve a Sustainable Financial Position | Asset Masterplan | Analysis and Insight | Engaging Our Citizens