



## **SMBC Post 16 SEND Options**

**2023 - 2024**

# Objectives

- To acknowledge the importance of education & life-long learning
- To understand what options are available Post 16
- To reflect upon what the local offer may look like
- To identify any questions that this may lead you to



# The Vision in many SEN schools...

“...aims to foster the **development of young people** by meeting their needs and giving them the confidence and competence to lead **independent, purposeful and enjoyable lives**”



# What are the options?

Life after school involves the following main options, though remember that no one is allowed full time employment until 18yrs:

- An accessible Further Education College
- An accessible Training Provider
- Sixth Form school / college
- Internship (supported)
- Traineeship
- Apprenticeship
- Employment / Volunteering
- Independent / Supported Living



# College options in Solihull

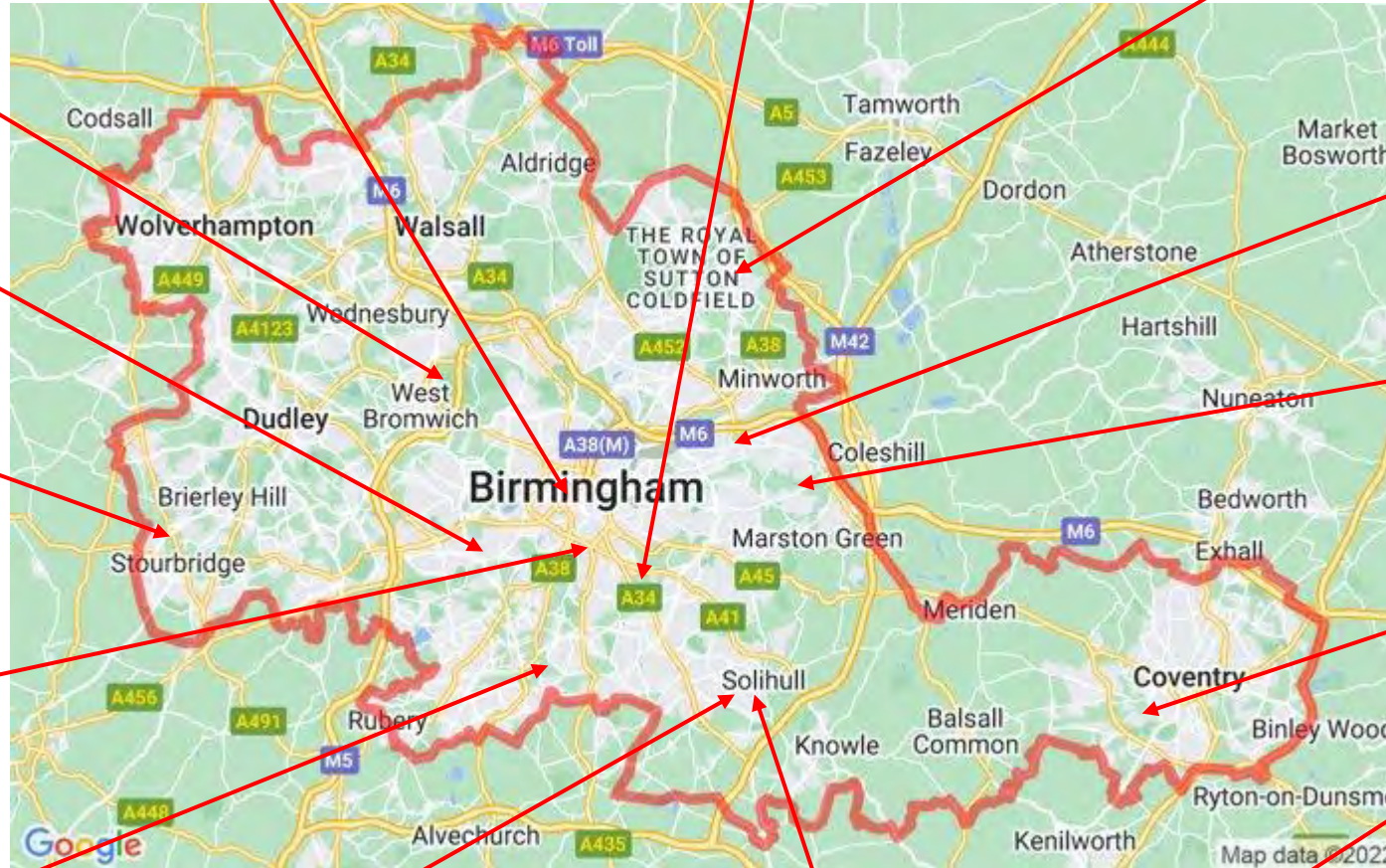
The expectation for many SEND students is to go to their *most accessible* FE college after school:



# Post 16 options



James Watt – Great Barr  
Matthew Boulton – Millennium Point  
Sutton Coldfield – Sutton Coldfield



# Solihull SEN School 6<sup>th</sup> form provision



Hazel Oak School



# What do colleges offer?

- An “adult” environment with learners from 16 to 66+
- Vocational learning that sees “hands on” activities alongside class
- Tutors who have / are still employed within the industry
- Industrial equipment to prepare you for the workplace
- “Real” live customers to support your work readiness
- Heavily supported environment for those that need it
- “Campus” feel with many additional facilities not found at school





# “Study Programme / Pre-Apprenticeship” timings?

Main Qualification

30 days work Experience

Additional  
Qualifications

English

Mathematics

Tutor Time

**= 3  
days  
a  
week**

# Areas of study?



# MENCAP...Internship Programme

There is a growth in the field of Supported Internships...

*Supported internships are **structured study programmes based primarily at an employer**. They are intended to enable young people with learning difficulties and/or disabilities to achieve sustainable, paid employment by equipping them with the skills they need for work through learning in the workplace*



# MENCAP...Internship Programme

## Student Profile...

- Requirement for a student to be wanting to go to work
- To have good attendance and punctuality
- Genuine desire to learn
- Ranging from Pre-Entry to Level 2



# MENCAP...Internship Programme

## Course Overview...

- A 1-year programme though considerations given to a 2-year route
- Transition starts in July as soon as left school
- 2 Days a week...starts in class to build confidence / fact find
- Tutor and LSAs support approximately 10 in a class
- Employability Skills & Functional Skills English / maths
- Once sector identified, Job Coach and Case Worker join
- 2 weeks holiday Easter and Xmas and 4 bookable days



# MENCAP...Internship Programme

## Course Management...

- Students need to keep open mind for employment opportunities
- Case Worker negotiates with employers
- Disability awareness training offered to employers
- Group agreement put in place with students to resemble contract
- Course Reviews take place every 6 weeks
- Support with Travel Training offered & Enrichment opportunities
- Wish to increase confidence in their community
- If no employment after a year, then Traineeship / Apprenticeship / Volunteering / Job Searching offered – stays for 18 months!

# Further Education Colleges



In looking to prepare you for “the real world”, many colleges offer a supported learning environment in which mainstream learners co-exist amongst learners with SEND following a Study Programme route

- Often have more than one site with multiple course options
- Wide range of starting points available at every level
- Independence skills for living and life developed with routes through to vocational areas
- Real work opportunities

# An example of typical “pathways” available

ROUTES AVAILABLE FOR SUPPORTED LEARNING STUDENTS	
COURSE NAME	EXPECTED LEVEL AT START
ENGAGE	Pre-Entry
EVERY-DAY LIFE SKILLS	Pre-Entry Plus
INDEPENDENT LIVING SKILLS	Entry Level 1 (could be 2 years)
INDEPENDENT LIVING SKILLS PLUS	Entry Level 2
PATHWAYS	EL2 to E3 – Exit Route to Volunteering available
MAIN COLLEGE COURSE	E3 to Level 1
ICT, HEALTH AND SOCIAL CARE, CONSTRUCTION, CATERING, SPORTS	

Transition & Baseline ensure correct course. Can jump 2 steps at a time. It is a 3 day per week programme.

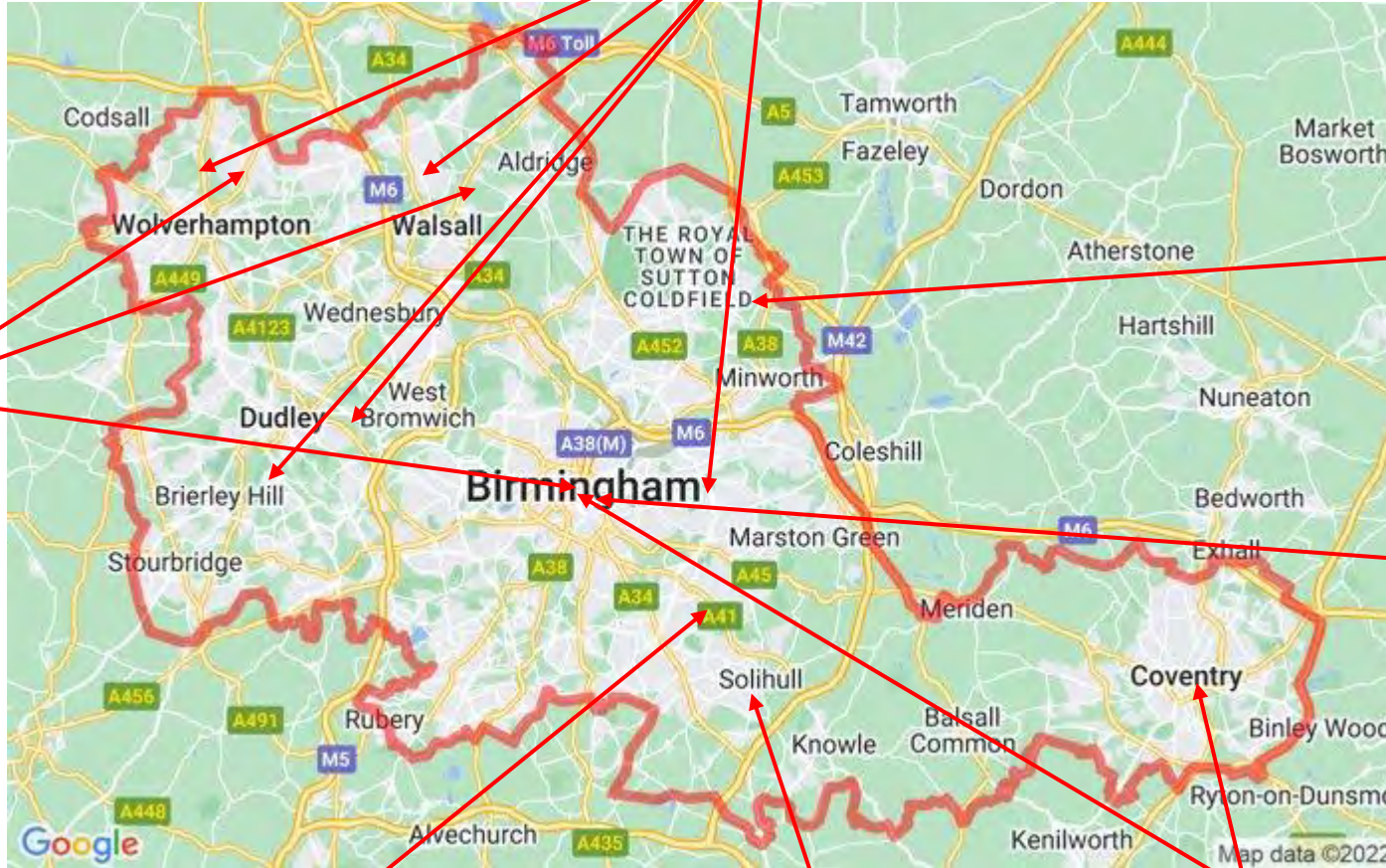


# Training Providers

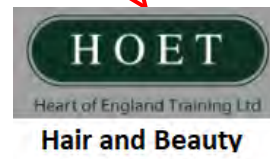
Smaller institutions with a “live” working environment, typically based in a town centre / easy to access location... The following is a small example of a broad list available.

Training Providers within Birmingham Area	
Company	Specialisms
<a href="#">Heart of England Training</a>	Hair, Beauty, Sport
<a href="#">Military Preparation College</a>	Careers in the military
<a href="#">Total Training</a>	Construction, Scaffolding
<a href="#">CFA Training</a>	Customer Service and Contact Centre Skills
<a href="#">NOVA Training</a>	Motor Vehicle, Construction, Retail, Business
<a href="#">Access Creative College</a>	Music, Media, Gaming Events, Computing
<a href="#">The International Barista Training Academy</a>	Coffee!!

# Locations of some training providers



Additional locations in Warwick, Daventry and Quorn.



Additional locations in Leicester and Rugby

# Training Provider Example



- A local training provider with sites across the West Midlands
- A specialist in Hair (& Barbering), Beauty and Sports Coaching
- Shop front with live customers in real salons
- Opportunity for Study Programme or Apprenticeship
- Adult feel, much smaller environment to college



# Qualifications and levels?

Old grades	New grades
A*	9
A	8
B	7
C	6
	5 STRONG PASS
	4 STANDARD PASS
D	3
E	2
F	1
G	1
U	U

Level	Qualification	Equivalent to
3	Extended Diploma	3 A Levels
	Diploma	2 A Levels
	Certificate	1 A Level
2	Diploma	4 GCSEs (9 - 4 / A* - C)
	Extended Certificate	2 GCSEs (9 - 4 / A* - C)
	Certificate	1 GCSE (9 - 4 / A* - C)
1	Award / Certificate / Diploma	1 GCSE (3 - 1 / D - G)
Entry	Entry Level Qualifications	N/A
Pre-Entry	Pre-Entry Level Qualifications	N/A

# What qualifications do I need for Post 16?

LEVEL	QUALIFICATION	ENTRY REQUIREMENTS	PROGRESSION
<b>Entry</b>	Vocational Entry Level	You do not need any formal qualifications for entry on to this course	Level 1 Course Supported Internship
<b>Level 1</b>	Foundation Learning Level 1 Course	Entry Level 3 Literacy and Numeracy or GCSE Grades 1 to 2	Level 2 Course Employment Intermediate Apprenticeship
<b>Level 2</b>	Level 2 Certificate / Diploma Intermediate Apprenticeship	Typically need 4 GCSEs at Grade 3 including English and maths / Level 1 qual in relevant subject	Level 3 Course Employment Advanced Apprenticeship
<b>Level 3</b>	A- Levels Level 3 Diploma Advanced Apprenticeship	4 or 5 GCSEs at Grade 4-9 including English and maths	Employment University Higher Apprenticeship

# What may my school do to help me?

- 1) Careers guidance lessons in line with Gatsby Benchmarks
- 2) Careers 1:1 review and action plan from Year 9
- 3) Advice to parents in EHCP meetings
- 4) Transition opportunities
- 5) Training Provider and College tours as well as Guest Speakers in
- 6) Work Experience Opportunities
- 7) Encouragement to attend Open Events
- 8) High quality teaching and learning opportunities

