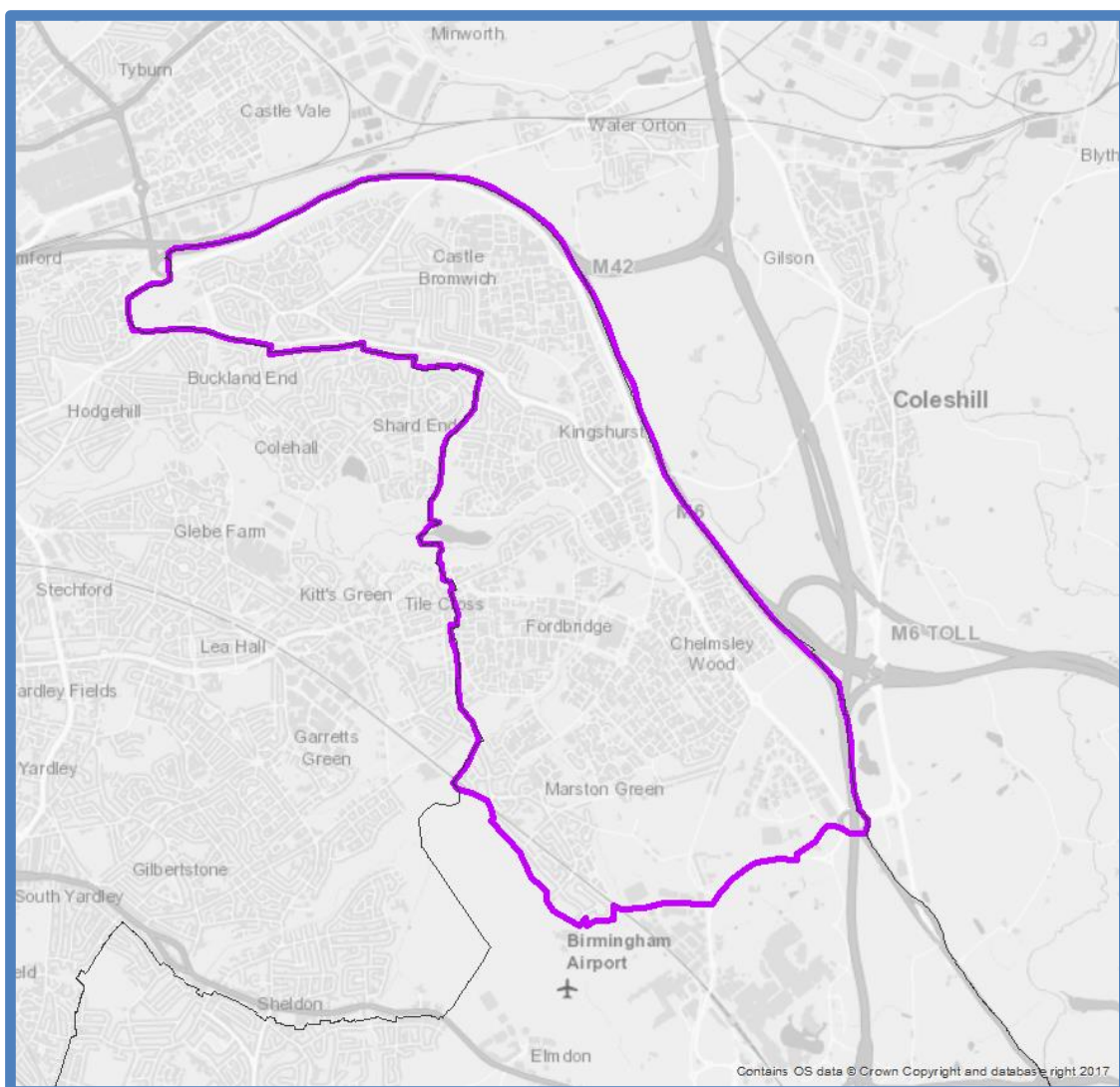


2018 Locality Profile: North Solihull



CONTENTS

*page
number*

LOCALITY PROFILE FORWARD	1
LOCALITY LSOA MAP	2
NORTH SOLIHULL LOCALITY SUMMARY	3
PEOPLE AND PLACE	5 - 16
Population	5
Ethnicity, Origin and Language	7
Household Composition	9
Housing and Tenure	10
Deprivation	12
Infrastructure and Assets	14
Housing Development	15
THE COMMUNITY VIEW	16 – 23
Solihull Council Place Survey	16
Solihull Community Housing STAR Survey	20
LOCAL AREA NEED	23 – 55
Employment, Worklessness and Adult Skills	23
Incomes and Poverty	26
Housing Need	30
Adult Health and Wellbeing	31
Adult Social Care	38
Social Isolation	39
Children, Young People and Education	43
Crime and Community Safety	49
APPENDIX: BOROUGH MAPS	56

LOCALITY PROFILE FORWARD

Solihull has been divided into three localities; north, east and west (see appendix).

This profile gives a snapshot of the North Solihull locality, focusing on the people, place and service need in the area. In addition it includes a summary of local residents' opinion giving an insight of what local people think of their community and North Solihull as a place to live.

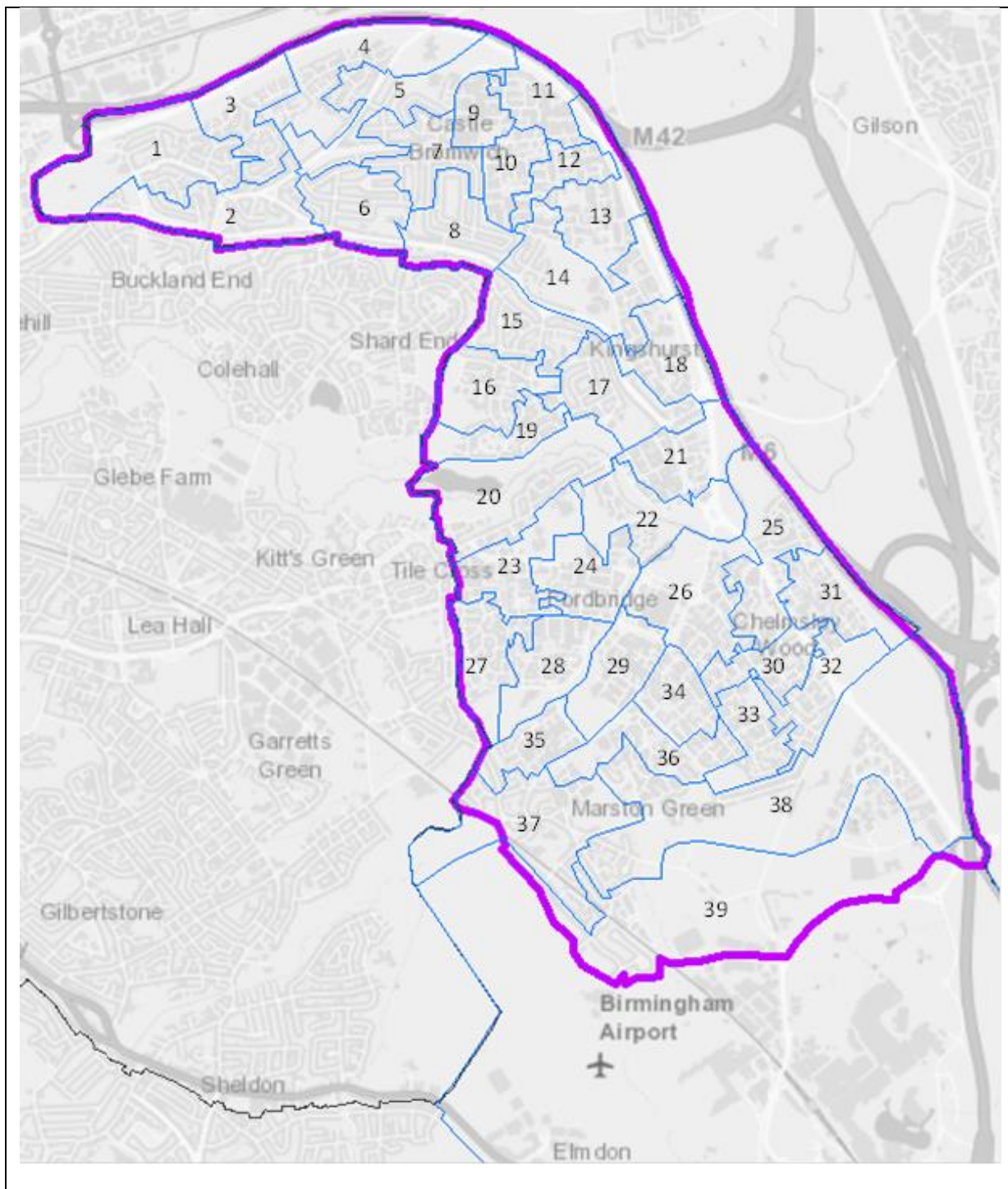
The data in the Locality Profiles is based on local area ward and Census area geography, with the majority of information available at Lower Super Output Area (LSOA) neighbourhood level.

The North Solihull locality includes 39 LSOAs (including Bickenhill Hub which overlaps the locality boundary) and five wards (including Bickenhill which also falls within the East Locality).

The 39 LSOAs are listed below, with a map overpage.

Map	LSOA	Map	LSOA
1	Castle Bromwich Hall	21	Bacon's End
2	Bradford Road	22	Cole Valley
3	Park Hall	23	Bennett's Well
4	Coleshill Heath South	24	St Anne's
5	Parkfields	25	Yorkminster
6	Green Lane West	26	Chelmsley Wood Town Centre
7	Chester Road West	27	Chapelhouse
8	Green Lane East	28	Hatchford
9	Chester Road East	29	Alcott Wood
10	The Cars West	30	Craig Croft South
11	The Rivers	31	Windy Arbor
12	The Cars East	32	Bluebell
13	The Birds North	33	Coleshill Heath North
14	The Birds South	34	Alcott Hall
15	Windward Way	35	The Cities
16	The Trees	36	Low Brook
17	Yorkswood	37	Marston Green
18	Central Kingshurst	38	Bickenhill Hub
19	The Islands	39	Bacon's End
20	Babbs Mill North		

NORTH SOLIHULL SUPER OUTPUT AREAS



NORTH LOCALITY SUMMARY

There are distinct differences in the age profile, housing structure, household composition and levels of deprivation between the three regeneration wards of Chelmsley Wood, Kingshurst & Fordbridge and Smith's Wood and the majority of neighbourhoods in Castle Bromwich and Marston Green. Outcomes relating to health, education and crime vary accordingly as do levels of service demand, particularly in relation to Children and Family support.

People and Place

- With 40% aged under 30 years, North Solihull has the youngest population in the borough.
- The older population is relatively small, although like elsewhere the 65+ age group is growing fastest.
- Nearly 92% of the population are White, although the area is home to 57% of Solihull's Black/Black British population and 44% of those from a Mixed Race background.
- Single person households are more common than elsewhere in the borough with the proportion increasing.
- Over half of Solihull's lone parent households live in the North Solihull locality.
- 65% of Solihull's socially rented households live in North Solihull and in some neighbourhoods in the Regeneration wards well over 50% of all households are socially rented.
- 20 of the 39 LSOAs in North Solihull are among the most deprived 20% of neighbourhoods in England, with 16 of these in the bottom 10% and 8 amongst the most deprived 5%.
- There are six housing development sites designated in the draft Local Plan in North Solihull which have an estimated capacity for 630 new housing units. This represents 7% of the borough total.

Community View

- The majority of North Solihull respondents to SMBC's Place Survey are satisfied with the area as a place to live (74%) with responses also showing that it is a socially cohesive area.
- Things for young people to do, road & pavement repairs, the level of crime, traffic congestion and support in the community for people who require care to live independently are most frequently cited as aspects of the local area that need improving.
- Just three in ten respondents think they can influence local decisions and at 29% participation in volunteering is the lowest in the borough.
- A large majority of North Solihull tenants and residents responding to Solihull Community Housing's STAR survey are satisfied with their local neighbourhood (66%).

- However, this is slightly lower than elsewhere in the borough, as is the proportion satisfied with the quality of their home (73%) and the proportion who think their rent provides value for money (76%).

Local Area Need

- North Solihull residents are more likely than elsewhere in the borough to be dependent on an out of work benefit, housing benefit or tax credits.
- In North Solihull 28% of children live in an out of work benefit household, rising to well over 35% in parts of the Regeneration wards.
- 62% of all Solihull households on the Housing Register classified as having a housing need live in the North locality.
- Evidence suggests adults in North Solihull are less likely to live a healthy lifestyle than elsewhere in the borough and data relating to life expectancy and premature mortality is accordingly less favourable.
- Proportionally more adults in North Solihull aged 18+ receive council funded Adult Social Care support than elsewhere in the borough.
- 73% of North Solihull residents receiving Adult Social Care support receive a community package such as homecare, with 23% in a care home.
- Many of the risk factors associated with social isolation such as benefit dependency are more prevalent in North Solihull and fewer respondents to the Place Survey think that their neighbours would provide practical help if they fell ill.
- Particular at risk groups such as older people living alone and carers are most likely to live in Castle Bromwich.
- Among all age groups Children in North Solihull are more likely than elsewhere in the borough to have a long-term illness or disability.
- Obesity levels are higher than average, particularly among those measured in School year 6.
- 58% of Solihull children classified as being in need or subject to child protection live in the North locality.
- Special Educational Needs are more common among children & young people living in North Solihull – 21% compared to the borough average of 15%.
- North Solihull has the highest crime and ASB rate in the borough, with particular hotspots in Castle Bromwich (Chester Road) and Chelmsley Wood Town centre.
- 41% of North Solihull respondents feel unsafe after dark compared to 28% elsewhere in the borough.
- Rubbish & litter and vehicle nuisance are the most frequently cited ASB problems by North Solihull respondents to the Place Survey.

PEOPLE AND PLACE

Population

	North	Solihull	England
2016 residents	58,919	211,763	55,268,067
Area (hectares)	2,618	17,829	13,027,843
Population density	22.5	11.9	4.2
2011 Households	24,702	86,056	22,063,368
Average household size	2.35	2.40	2.40
<i>Source: ONS</i>			

In 2016 the population of North Solihull was 58,919 (28,295 males, 30,624 females).

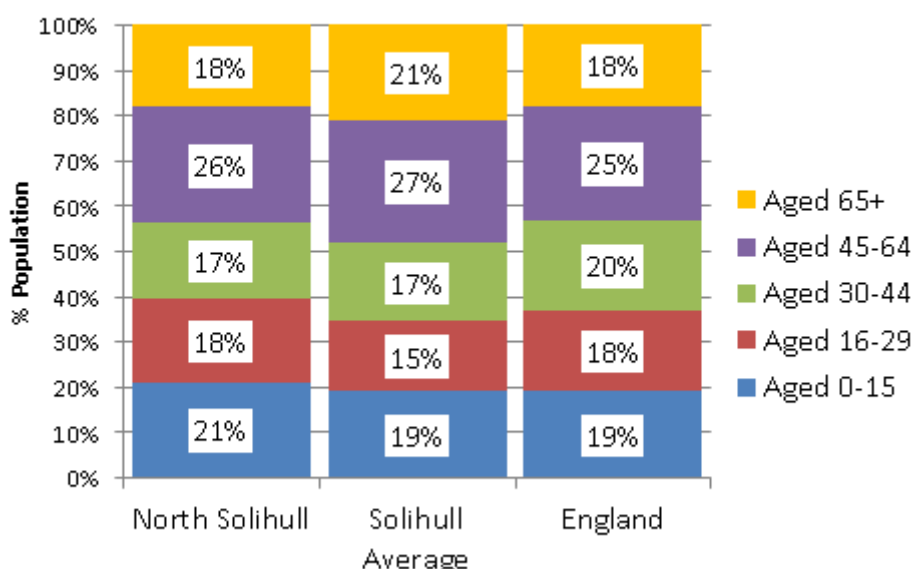
There are 22.5 people per hectare in North Solihull, compared to the Solihull average of 11.9 per hectare and the England average of 4.2 per hectare.

At the time of the 2011 Census there were 24,702 households in North Solihull, with an average of 2.35 people per household, compared to the Solihull and England averages of 2.40 per household.

	Count	% of Population		
	North	North	Solihull	England
Aged 0-4 years	4,195	7.1%	5.9%	6.2%
Aged 5-15 years	8,271	14.0%	13.3%	12.8%
Aged 16-29 years	10,848	18.4%	15.4%	18.0%
Aged 30-44 years	9,850	16.7%	17.3%	19.6%
Aged 45-64 years	15,087	25.6%	27.1%	25.4%
Aged 65-84 years	9,419	16.0%	17.9%	15.5%
Aged 85 years+	1,249	2.1%	3.1%	2.4%
Children (aged 0-15 years)	12,466	21.2%	19.2%	19.1%
Working Age (16-64 years)	35,785	60.7%	59.8%	63.1%
Retirement Age (65 years+)	10,668	18.1%	21.0%	17.9%
<i>Source: ONS Mid Year Population Estimates 2016</i>				

The North Solihull locality has a younger age profile than the rest of Solihull, with 40% aged under 30 (compared to 33% in West Solihull and 31% in the East locality). It also has a smaller population aged 65+ (18% compared to 21% in the West and 25% in the East), but numbers in this age group are similar to England as a whole.

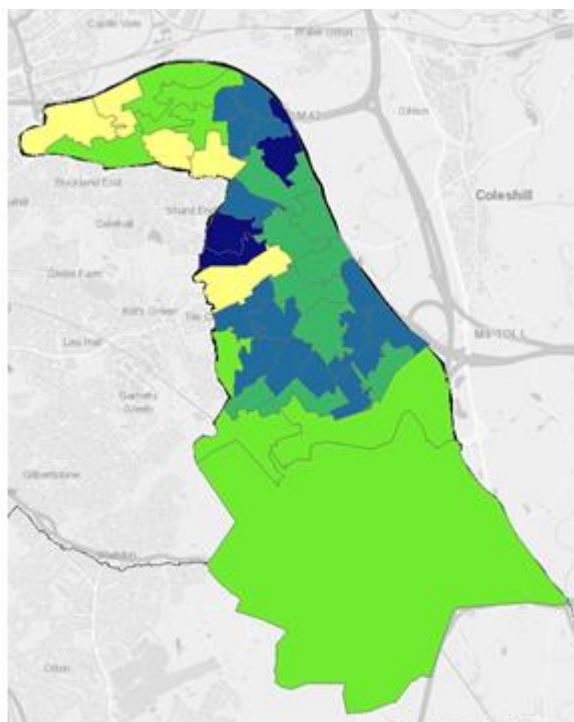
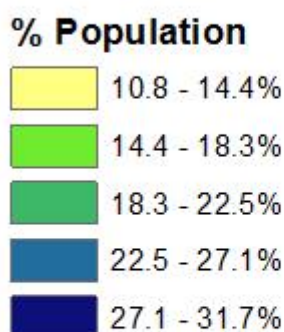
Resident Population 2016



Source: ONS Mid Year Population Estimates

Children aged 0-15 years of age represent 21% of the overall population in North Solihull, but as the map shows that proportion rises to well over a quarter in many LSOA neighbourhoods in the three regeneration wards. The highest concentrations of children are in Babbs Mill North (32%), Yorkswood (30%) and The Birds South (28%).

2016 Population Aged 0-15 Years



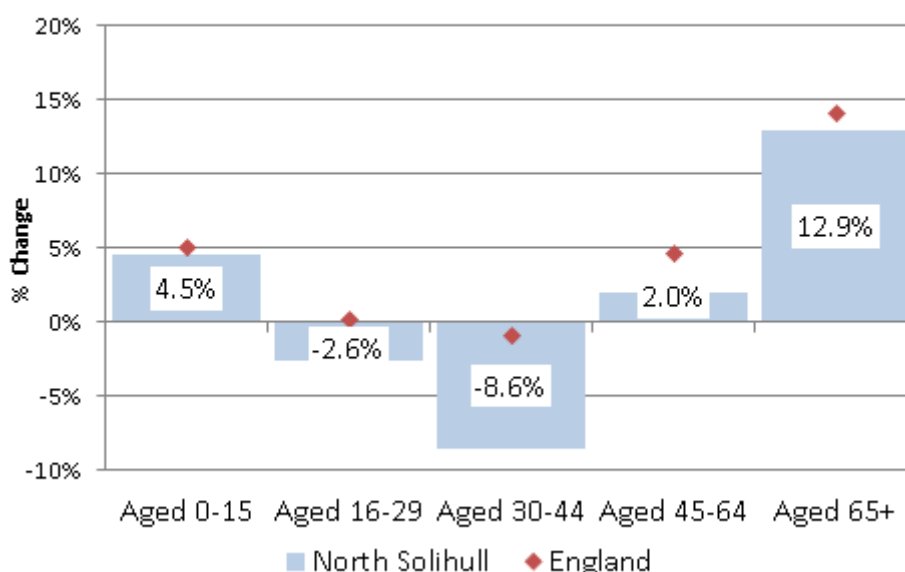
Source: ONS Population Estimates

North Solihull's population increased by 1.4% (821 individuals) between 2011 and 2016, compared to the borough average of 2.5% and the England average of 4.3%.

By age group the largest increase in population in North Solihull between 2011 and 2016 was among those aged 65 and over (12.9%, 1,215 individuals). This includes a 19% increase in the 85+ population (+200 individuals).

There were smaller increases in the number of children aged 0-15 years (4.5%, 533 individuals) and working age people aged 45-64 (2%, 289 individuals). This was partially offset by a fall in the number of younger working age people in the North Solihull locality.

Population Change 2011-2016



Source: ONS Mid Year Population Estimates

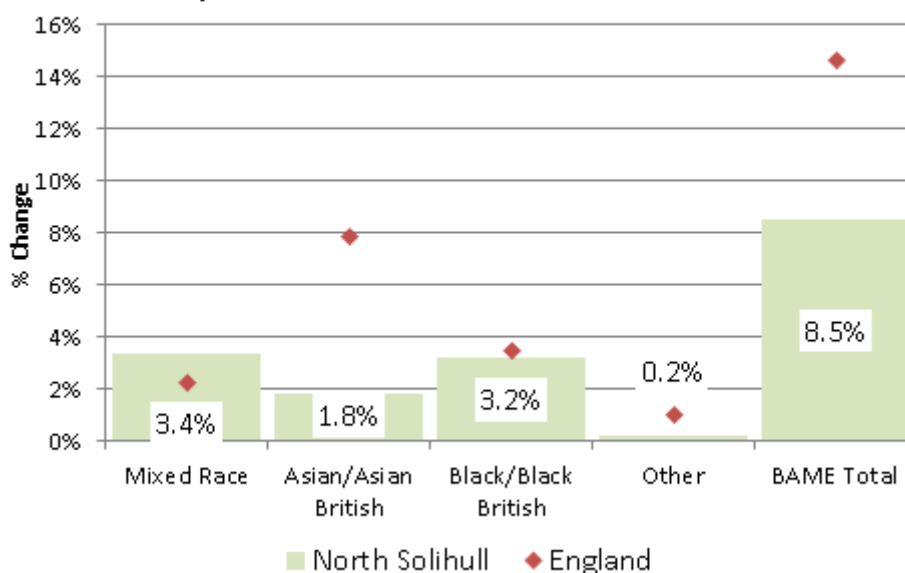
Ethnicity, Origin, Religion and Language

	Count	% of Population		
	North	North	Solihull	England
White Population	53,149	91.5%	89.1%	85.4%
Black & Asian Minority Ethnic Population (BAME)	4,949	8.5%	10.9%	14.6%
Born in UK	55,216	95.0%	92.6%	86.2%
Born Outside UK	2,882	5.0%	7.4%	13.8%
No Religion	16,200	29.8%	22.8%	26.7%
Christian	37,029	68.1%	70.0%	64.0%
Other Religions	1,159	2.1%	7.1%	9.4%
English Main Language (age 3+)	54,799	98.4%	97.1%	92.0%
Speak English Well (age 3+)	723	1.3%	2.5%	6.3%
Cannot Speak English or Speak Well (age 3+)	169	0.3%	0.5%	1.7%

Source: ONS Census 2011

North Solihull has a smaller BAME population than either the borough or national average (8.5% compared to 10.9% and 14.6% respectively), although at 3.4% the Mixed Race population in North Solihull is relatively large. The locality has a notably smaller population of Asian/Asian British residents than the rest of Solihull and England as a whole.

Black and Asian Minority Ethnic (BAME) Population in North Solihull 2011

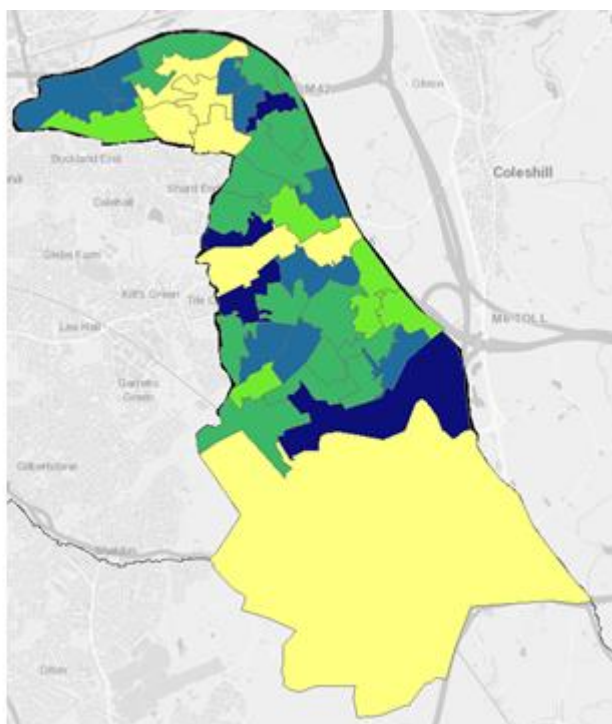
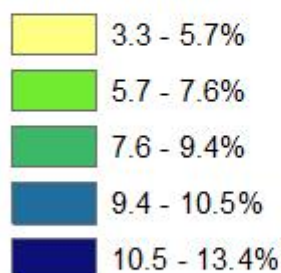


Source: ONS Mid Year Population Estimates

At a local neighbourhood level the BAME population in North Solihull ranges from over 10% in parts of the three regeneration wards of Chelmsley Wood, Kingshurst & Fordbridge and Smith’s Wood to less than 5% in parts of Castle Bromwich.

Residents from a Black or Minority Ethnic Background in North Solihull

% Residents



Source: ONS Census 2011

In common with Solihull as a whole the number of North Solihull residents born outside of the UK is relatively small (5% of the total compared to the England average of 13.8%). A large majority (70%) of the 2,882 North Solihull residents born outside of the UK arrived prior to 2001, with just 11% arriving post 2007.

Around 30% of the North Solihull population say that they have no religious affiliation. Christians are the largest group (68%), with the proportion of other religions comparatively small (2% compared to 7% for the Solihull average and over 9% for England as a whole).

Over 98% of the North Solihull population aged 3 years and over have English as their main language, with those that cannot speak English or speak English well representing just 0.3% of the total population.

Household Composition

	Count	% of All Households		
	North	North	Solihull	England
One Person	7,824	31.7%	29.2%	30.2%
One Family	15,558	63.0%	65.6%	61.8%
Other Households	1,320	5.3%	5.2%	8.0%
Total Aged 65+	4,978	20.0%	24.4%	20.7%
Of which Single	3,035	12.3%	13.9%	12.4%
All with Dependent Children	7,855	31.8%	30.2%	29.1%
Of Which Lone Parent	3,118	12.6%	7.1%	7.1%
All Households	24,702			

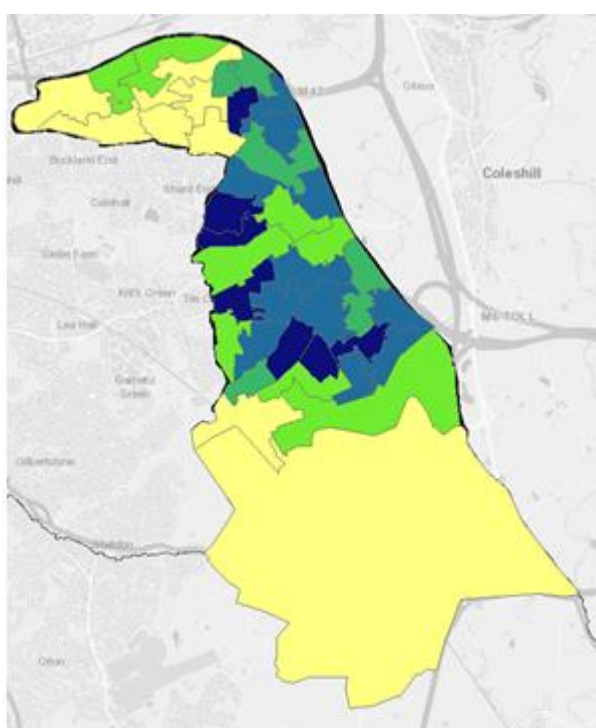
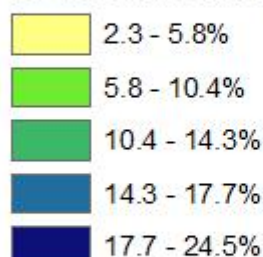
Source: ONS Census 2011

63% of North Solihull's 24,702 households are occupied by one family, which like the borough as a whole is above the England average (62%). Single person households are more common in North Solihull than across Solihull as a whole and increased by 19% between 2001 and 2011, whereas those occupied by a family fell by -4%. As a result single person households now make up 32% of all households in North Solihull compared to 27% in 2001, a shift that is consistent with the pattern across Solihull as a whole.

There are 4,289 lone parent households in North Solihull of which 3,118 have dependent children, which represents 12.6% of all households in the locality. By far the largest concentration of lone parent households with dependent children are in the three regeneration wards, with lone parents representing over 20% of all households in some neighbourhoods.

Lone Parent Households in North Solihull

% of Households



Source: ONS Census 2011

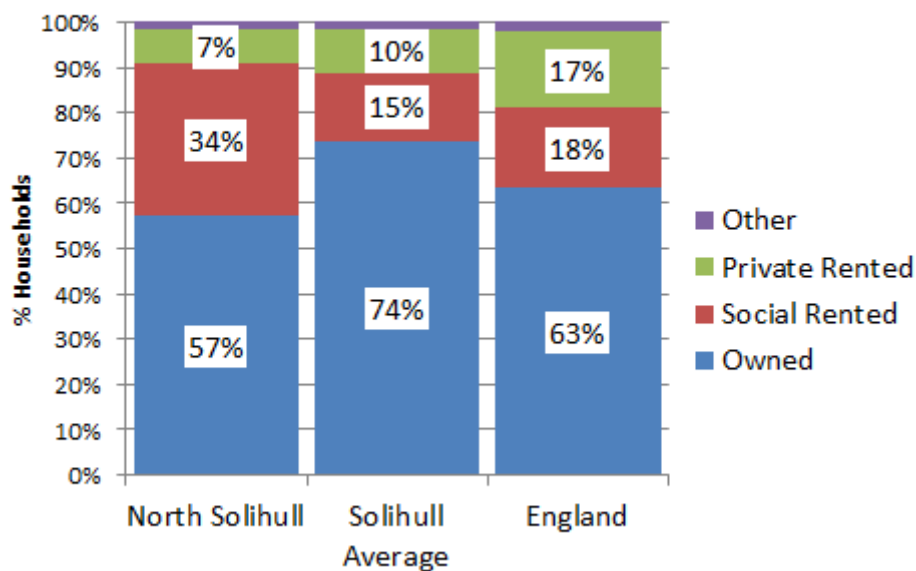
Housing and Tenure

34% of households in the North Solihull locality are socially rented, far in excess of the England average of 18%. North Solihull accounts for 65% of all socially rented households in Solihull.

	Count	% of Households		
	North	North	Solihull	England
Owner Occupied	14,139	57.2%	73.9%	63.3%
Shared Ownership	211	0.9%	0.6%	0.8%
Socially Rented	8,346	33.8%	14.9%	17.7%
Privately Rented	1,846	7.5%	9.9%	16.8%
Living Rent Free	160	0.6%	0.7%	1.3%

Source: ONS Census 2011

Household Tenure 2011

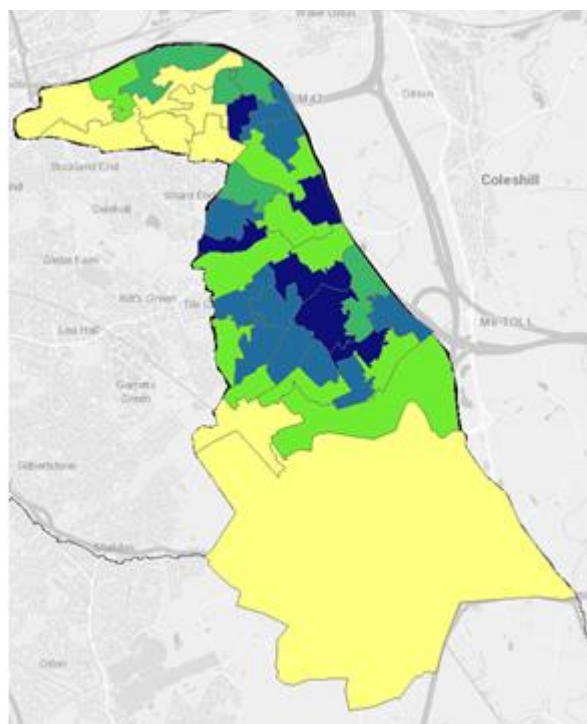
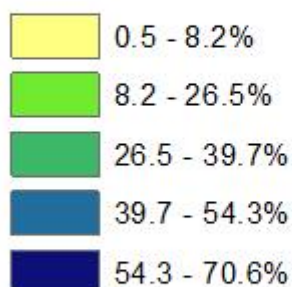


Source: ONS Census

The proportion of socially rented households rises to well over a half in many LSOA neighbourhoods in the three regeneration wards. The highest concentrations of socially rented households are in Cole Valley (71%), Chelmsley Wood Town Centre (63%), The Rivers (58%), Craig Croft South (58%) and The Islands (58%).

Socially Rented Households in North Solihull

% Households



Source: ONS Census 2011

The majority of households in the North Solihull locality live in a house or bungalow. However, the proportion living in flats is above the national average (26% compared to 22%) and North Solihull 41% of all Solihull households living in flats.

	Count	% of Households		
	North	North	Solihull	England
Whole House or Bungalow	18,622	74.0%	81.6%	77.5%
Flat, Maisonette or Apartment	6,536	26.0%	18.2%	22.1%
Other	8	0.0%	0.2%	0.4%
<i>Source: ONS Census 2011</i>				

Deprivation

The Index of Multiple Deprivation (IMD) combines a number of income, social and housing measures into a single deprivation score for individual LSOA neighbourhood in England. In this way the IMD ranks deprivation in each neighbourhood relative to all others in England.

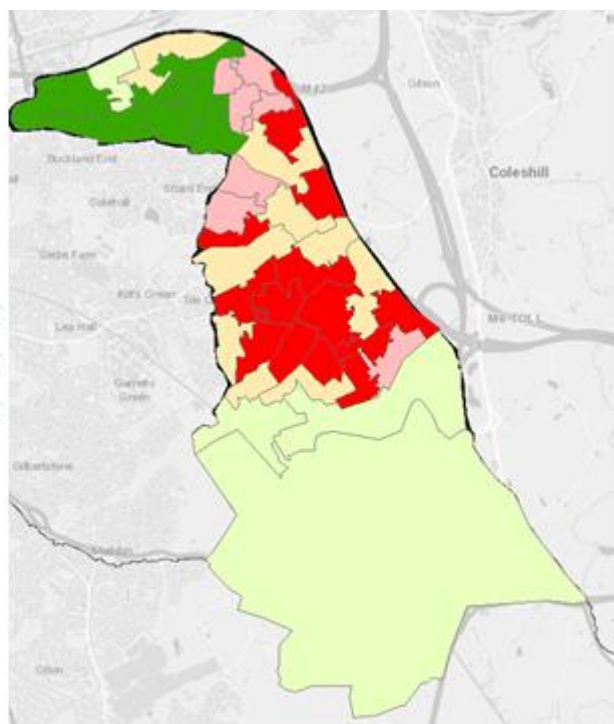
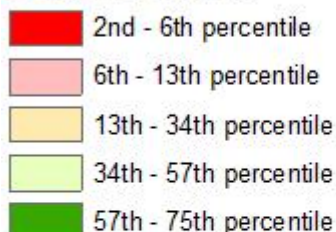
The average percentile rank of the 39 LSOAs in the North Solihull locality is 25.2 compared to 74 in the west locality and 86.3 in the east of Solihull. However, there is a considerable range of deprivation in North Solihull. The most deprived neighbourhood is the Birds South LSOA (Smith's Wood ward) on the 2nd percentile and the least deprived is Green Lane East (Castle Bromwich ward) on the 75th percentile.

In total 20 of the 39 LSOAs in North Solihull are among the most deprived 20% of neighbourhoods in England, with 16 of these in the bottom 10% and 8 amongst the most deprived 5%.

As the map below shows the majority of the three regeneration wards (Chelmsley Wood, Kingshurst & Fordbridge and Smith's Wood) are in the most deprived 10% of neighbourhoods in England, with an additional pocket of relative deprivation in Park Hall (Castle Bromwich).

Deprivation in North Solihull

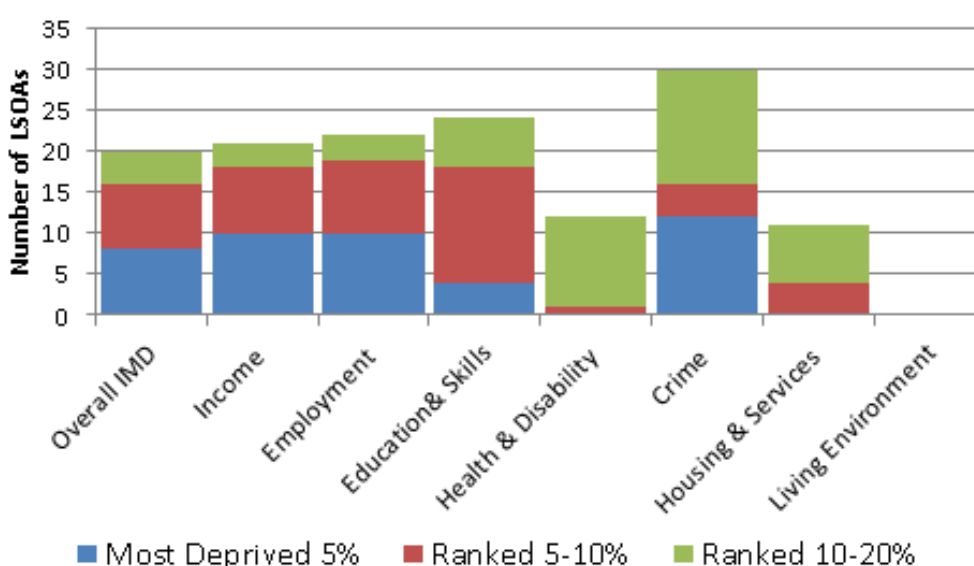
Percentile Rank



Source: IMD 2015

As the chart below shows 30 of North Solihull's 39 LSOAs are ranked among the most 20% deprived neighbourhoods in England from a crime and order perspective (with 12 in the most deprived 5%). There are no North Solihull LSOAs ranked in the bottom 20% of neighbourhoods for the Living Environment and relatively few from a health & disability or Housing & services perspective.

Neighbourhoods in North Solihull in Most Deprived 20% in England



Source: 2015 Index of Multiple Deprivation, DCLG

Infrastructure and Community Assets

There are frequent bus services to Birmingham but, despite the area's advantageous location adjacent to the Birmingham conurbation and strategic transport network, the area has poor connectivity with, and long journey times to, south Solihull. This is particularly significant as there are relatively few jobs based in the North Solihull locality. Residents, particularly in the three regeneration wards, are heavily reliant on public transport – 34% of households in the North Solihull locality have no car or van compared to 14% elsewhere in the borough. The proposed opening of the East Birmingham tram extension in 2026, linking UK Central to the existing tram network in Birmingham, will make a significant contribution to North Solihull's transport infrastructure, particularly in terms of access to jobs.

North Solihull Partnership investment has addressed many issues relating to public amenity areas and pedestrian routes. For instance, the new village centres at Chelmonds Cross and Smith's Wood and improved access to green spaces. The area has several significant environmental assets including the River Cole and its wider landscaped setting, woodlands, nature reserves and parks, which provide opportunities for enhancement.

The table below summarises the range of community facilities and assets located in the North Solihull locality. A full list is available in the separate asset register.

	Type of Asset	Number
Education	Infant/Primary	15
	Secondary	5
	Special	3
	Private	0
	Further Education College	2
Health & Care	GP Surgery	9
	Pharmacy	12
	Older People Residential & Nursing	5
	Older People Sheltered Housing/Extra Care	4
	Residential for Adults with Learning Disabilities	15
Community Facilities	Libraries	5
	Community Centres, Halls & Clubs	35
	Sports & Leisure Facilities	2
	Places of Worship	14
Parks & Nature Reserves	Green Flag Parks	2
	Other Parks	3
	Local Nature Reserve	6

Housing Development

The Solihull Local Plan (SLP) was adopted in December 2013 and covers the period 2011 to 2028. However, in the wake of a legal challenge, housing shortfalls in the wider region and the need to deliver HS2 it was deemed necessary for an early review of this plan.

This review has led to the development of a draft local plan with additional land allocated for housing development¹.

There are two housing sites in North Solihull allocated in the 2013 SLP that have not yet started development and have been retained in the updated draft local plan. These sites in Chelmsley Wood and Marston Green have the potential to deliver 280 new housing units.

Existing Housing Allocations (Retained from 2013 SLP)		
Site	Area (hectares)	Capacity (Units)
Simon Digby, Chelmsley Wood	4.57	200
Chelmsley Lane, Marston Green	1.96	80
North Solihull Total	6.53	280
<i>Source: SMBC Draft Local Plan</i>		

There are four new sites allocated in North Solihull in the updated draft local plan with a potential to deliver 350 new housing units.

New Housing Allocations (Proposed as part of Review)					
Site	Area (ha)	Capacity (Units)	Delivery Years		
			Short 1-5	Medium 6-10	Long 11-15
Arran Way – Smith’s Wood	2	50	Yes		
Kingshurst Village Centre	4	100		Yes	
Jensen House / Auckland Drive – Smith’s Wood	4	100		Yes	
Chester Road / Moorend Avenue - Fordbridge	4	100			Yes
North Solihull Total	14	350			
<i>Source: SMBC Draft Local Plan</i>					

Taken together the retained housing development sites from the 2013 SLP and the new allocations make provision for 630 housing units in North Solihull. This is 7% of the borough’s total and equates to 10.7 units for each 1,000 residents, by far the lowest of the three locality areas.

¹ The Review process is ongoing with public consultation on the proposals running from December 2016 to February 2017. The final housing allocations are dependent on this consultation process.

Housing Allocations in Draft Local Plan					
	Existing Allocations	New Allocations	Total Units	% Solihull Total	Units Per 1,000 Population
North	280	350	630	7%	10.7
East	175	2,350	2,525	29%	63.4
West	2,185	3,450	5,635	64%	49.9
Solihull	2,640	6,150	8,790		41.5
<i>Source: SMBC Draft Local Plan</i>					

COMMUNITY VIEWS

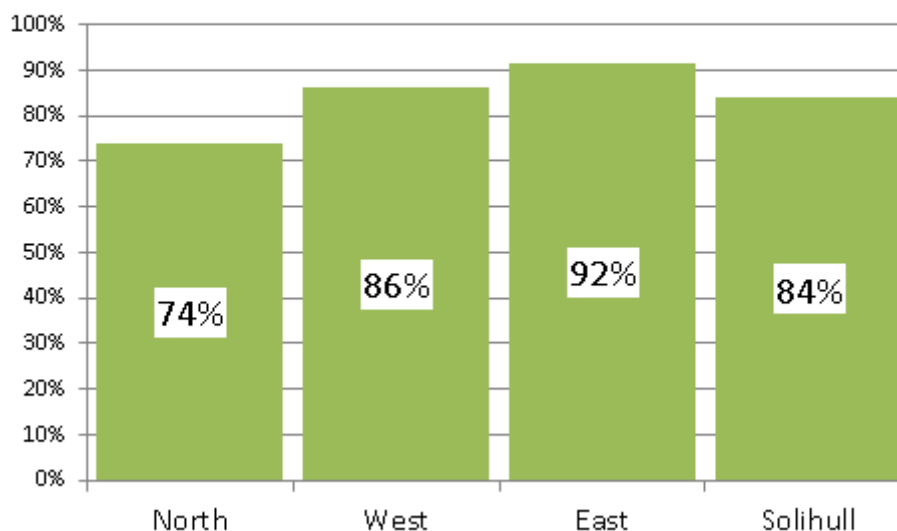
Place Survey

In 2018 the Solihull Place Survey asked 700 Solihull residents a series of questions relating to their opinions about their local area as a place to live, local services and their own participation in community life. There were 188 responses from residents living in the North Solihull locality area.

74% of respondents in North Solihull said that they were satisfied with their local area as a place to live (22% very satisfied, 52% fairly satisfied) compared to 17% who were dissatisfied (13% fairly dissatisfied, 3% very dissatisfied). Although, positive, this was the weakest response of the three Solihull localities.

	Overall, how satisfied or dissatisfied are you with your local area as a place to live?		
	North Total	% Respondents	
		North	Solihull Average
Very satisfied	41	22%	39%
Fairly satisfied	97	52%	44%
Neither satisfied nor dissatisfied	14	8%	5%
Fairly dissatisfied	25	13%	8%
Very dissatisfied	6	3%	2%
Total	188		
<i>Source: SMBC Place Survey 2018</i>			

Respondents Satisfied with their Local Area as a Place to Live



Source: SMBCPlace Survey 2018

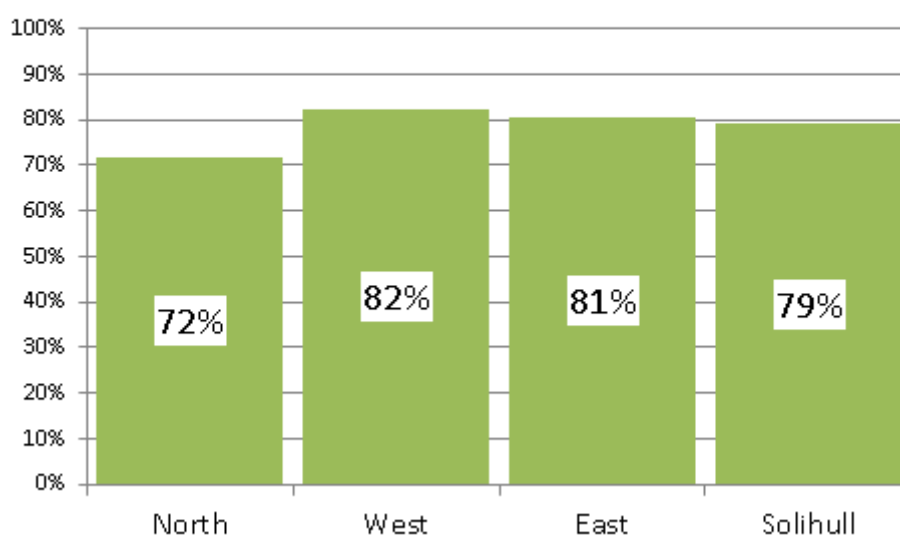
Respondents to the Place Survey were asked which of 12 elements of their local area and community most needed improving. As the table below shows 39% of respondents in North Solihull said that thing for young people to do definitely needed improving. At least three in ten respondents said that road and pavement repairs, the level of crime, traffic congestion and support in the community for people who require care to live independently also definitely needed to improve in their local area.

Definitely Needs Improving in Local Area				
Aspect of Local Area	% Respondents		Rank out of 12	
	North Solihull	Solihull Average	North Solihull	Solihull Average
Things for young people to do - including those young people with disabilities	39%	21%	1	4
Road and pavement repairs	34%	30%	2	1
The level of crime	30%	27%	3	3
The level of traffic congestion	30%	30%	4	2
Support in the community for people who require care to live independently	30%	13%	5	7
Support for people who are caring for others	29%	14%	6	6
Things for older people to do - including those older people with a disability	28%	16%	7	5
Fast Broadband/Internet Connectivity	10%	11%	8	8
Attractive environment	8%	5%	9	12
Good local facilities (Schools, Doctors, Dentists, Shops, Sports & Leisure facilities)	8%	7%	10	10
Local places to work	6%	7%	11	11
Reliable local Public Transport	5%	8%	12	9

Source: SMBC Place Survey 2018

Like Solihull as a whole a large majority of respondents from North Solihull say that people from a different background in their local area get on well together (72% compared to 79% for the Solihull average). Just 6% disagree, broadly in-line with the Solihull average.

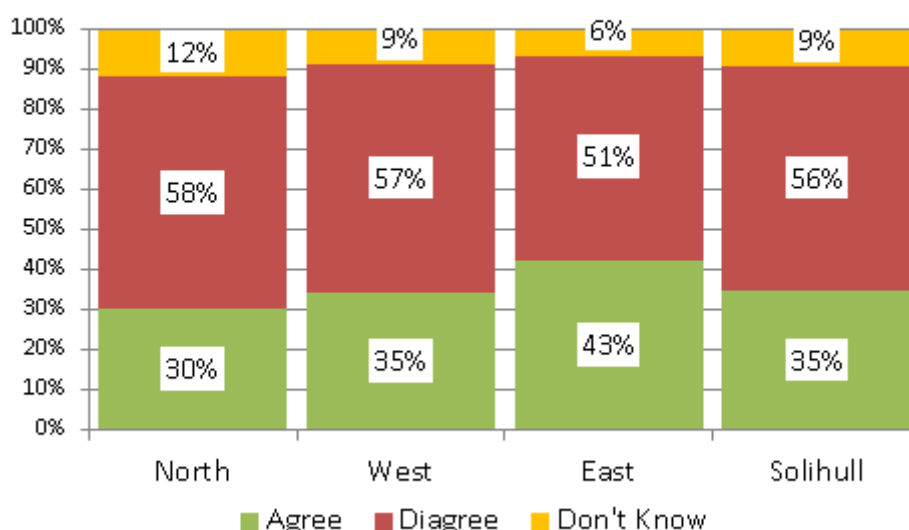
Respondents Agree that People from a Different Background Get on Well Together in their Local Area



Source: SMBC Place Survey 2018

Less one in three respondents from North Solihull say that they can influence decisions in their local area, compared to 58% who don't think they can. However, it should be noted that this negative perception is broadly in-line with the other areas of Solihull.

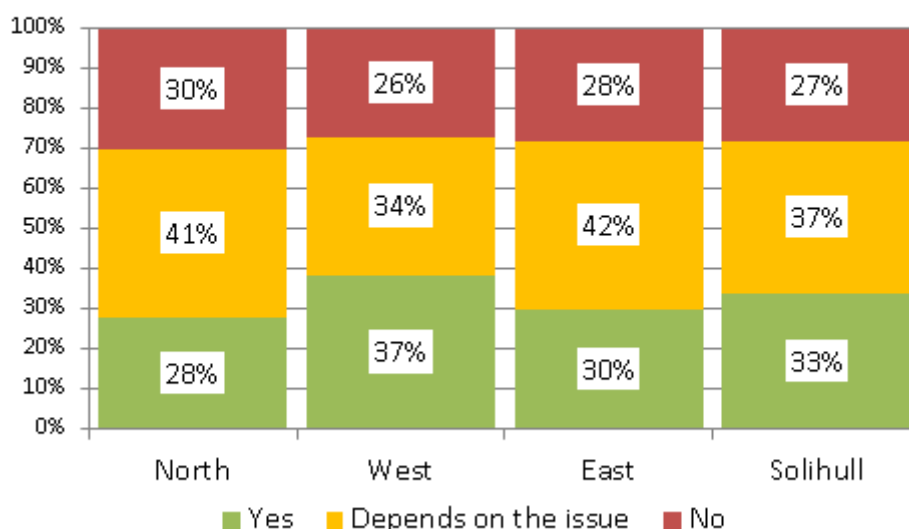
Do you agree or disagree that you can influence decisions affecting your local area?



Source: SMBCPlace Survey 2018

Although a small majority of respondents in North Solihull do not think that they can influence local decisions only 28% say that they would like to be more involved in decisions that affect their local area, with a further 41% saying that it depends on the issue. However, this is broadly consistent with the Solihull wide view.

Would you like to be more involved in decisions that affect your local area?



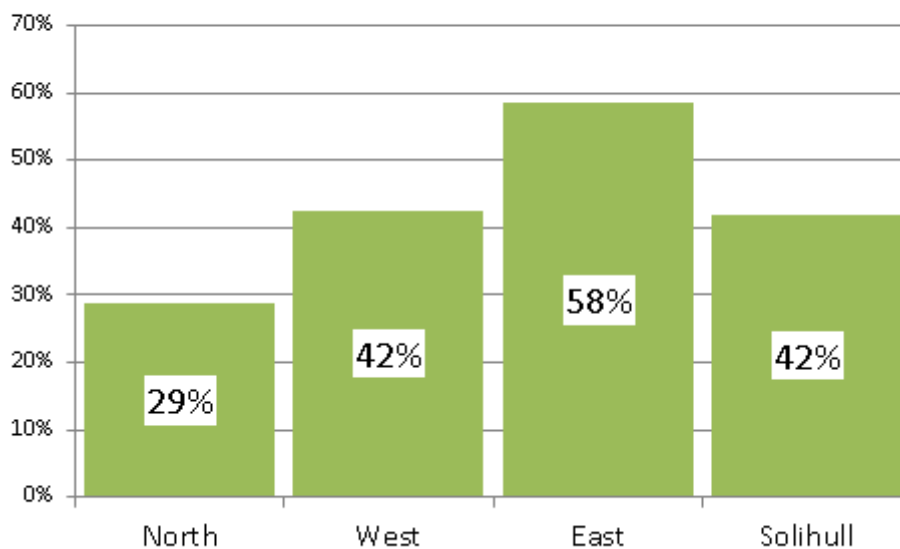
Source: SMBCPlace Survey 2018

Just 29% of respondents from North Solihull say that have taken part in formal volunteering for a club or organisation over the last 12 months (18% once a month, 11% less often),

compared to 71% who haven't volunteered. This is a much lower participation rate than either of the other Solihull localities (42% West, 58% East).

However, it should be noted that more North Solihull respondents say that they have given informal unpaid help such as helping neighbours or litter picking in the last 12 months (60%).

Respondents Who Have Taken Part in Formal Volunteering Over the Last 12 Months



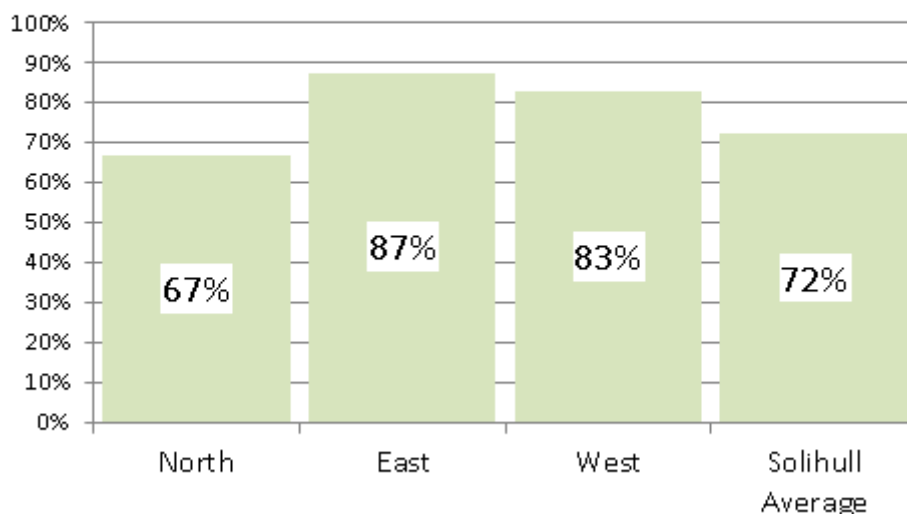
Source: SMBC Place Survey 2018

Solihull Community Housing Survey of Tenants and Residents (STAR)

Solihull Community Housing's STAR survey 2017 measures tenants' satisfaction with their local neighbourhood, their home and SCH services. Across Solihull as a whole there were a total of 1,299 responses equating to a response rate of 13%.

In North Solihull just over two thirds of SCH tenants who responded to the STAR survey are satisfied with their local neighbourhood as a place to live, compared to 23% who are dissatisfied. This represents a lower level of satisfaction than either of the other two Solihull neighbourhoods and is consistent with the SMBC Place Survey.

Respondents Satisfied with their Local Neighbourhood as a Place to Live



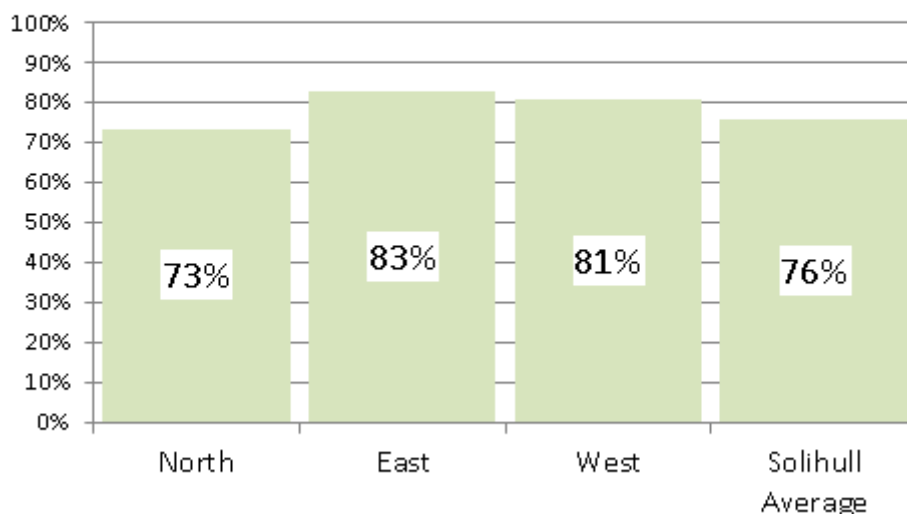
Source: SCH STAR Survey 2017

	Overall, how satisfied or dissatisfied are you with your local area as a place to live?		
	North Total	% Respondents	
		North	Solihull Average
Very satisfied	237	26%	35%
Fairly satisfied	363	40%	37%
Neither satisfied nor dissatisfied	94	10%	8%
Fairly dissatisfied	116	13%	11%
Very dissatisfied	89	10%	8%
Total	899		

Source: SCH STAR Survey 2017

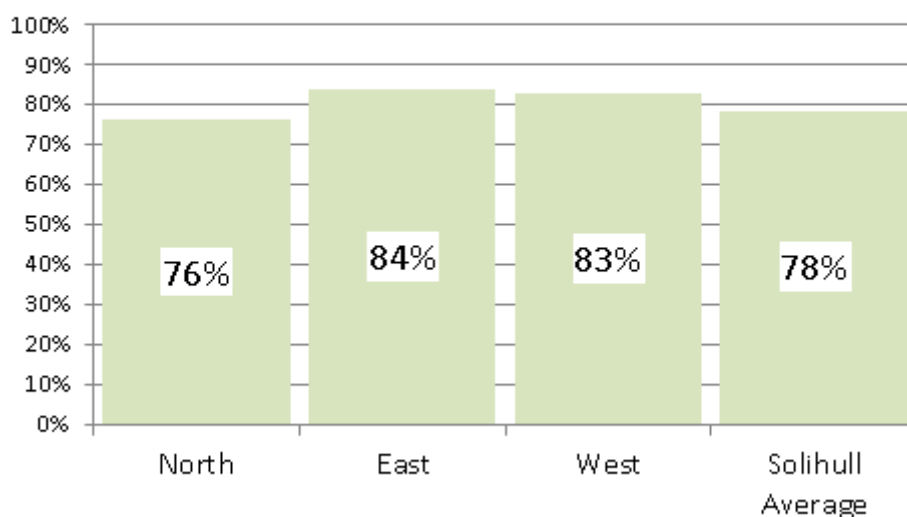
North Solihull tenants and residents are slightly less satisfied with the quality of quality of their home than other areas of the borough and are also slightly less likely to say that they think that their rent provides value for money.

Respondents Satisfied with the Quality of Their Home



Source: SCH STAR Survey 2017

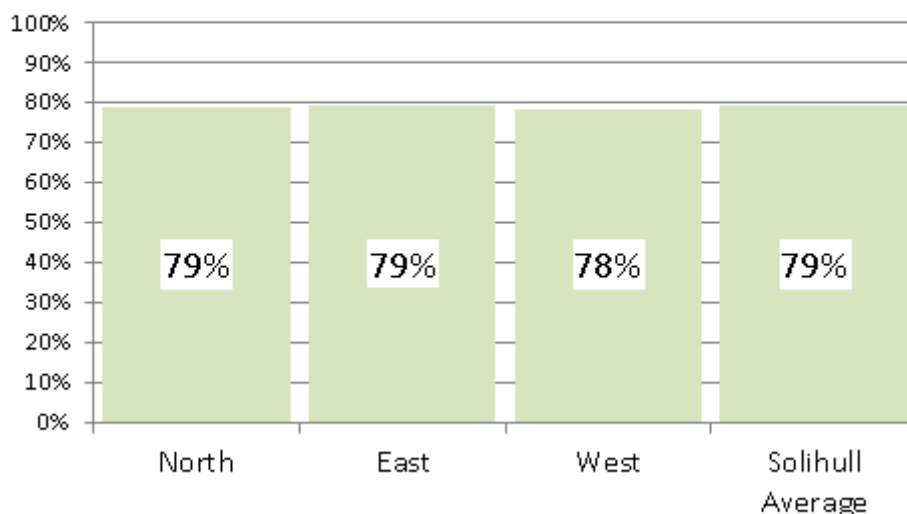
Respondents Satisfied That Their Rent Provides Value for Money



Source: SCH STAR Survey 2017

Despite lower levels of satisfaction with the local neighbourhood and the quality of their home a large majority of North Solihull respondents to the STAR survey say that they are satisfied with the overall service provided by SCH (79%), with comparatively few dissatisfied (11%). Responses to this question in in North Solihull are in-line with other areas of the borough.

Respondents Satisfied with the Service Provided by Solihull Community Housing



Source: SCH STAR Survey 2017

LOCAL AREA NEED

Employment, Worklessness and Adult Skills

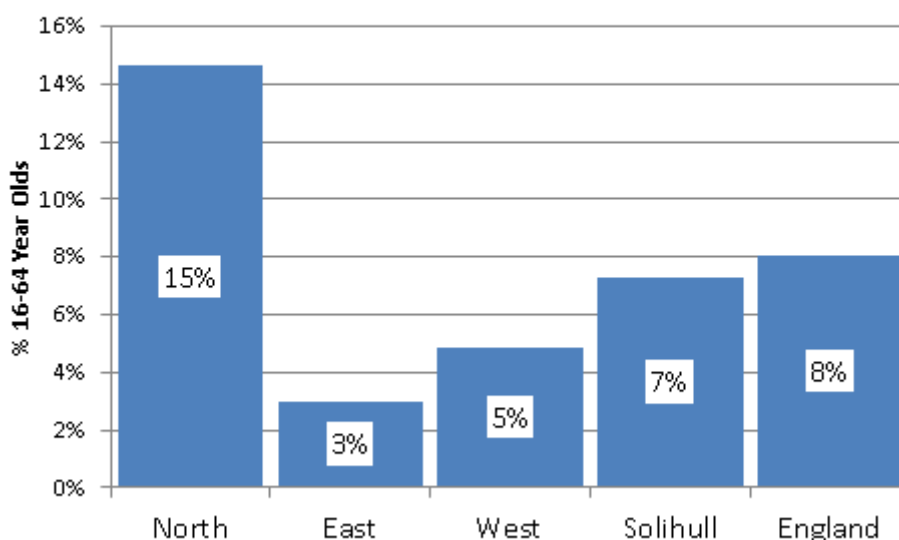
At the time of the Census the working age employment rate in North Solihull were much lower than elsewhere in the borough and the England average. Proportionally more people were both unemployed and economically inactive.

	North Solihull	% 16-64 Population		
		North Solihull	Solihull Average	England
Employed	24,206	66%	74%	71%
Unemployed	3,392	9%	6%	6%
Economically Inactive	9,114	25%	21%	23%

Source: ONS Census 2011

In November 2016 5,230 individuals in North Solihull were claiming an out of work benefit, equating to a worklessness rate of 14.6%. This is far higher than elsewhere in Solihull and nearly double the proportion across England as a whole (8.1%).

Out of Work Benefit Claimants



Source: DWP

63% of all out of work benefit claimants in North Solihull receive employment support Allowance (ESA) or Incapacity Benefits with 9.1% of the working age population claiming compared to the Solihull and England averages of 5% and 5.8% respectively. As with the rest of the borough and England as a whole around a half of all ESA claimants are unable to work because of mental health problems or a behavioural disorder.

It is also notable that 18% of claimants are lone parents receiving income support, a relatively high proportion compared to the rest of the borough and England as a whole.

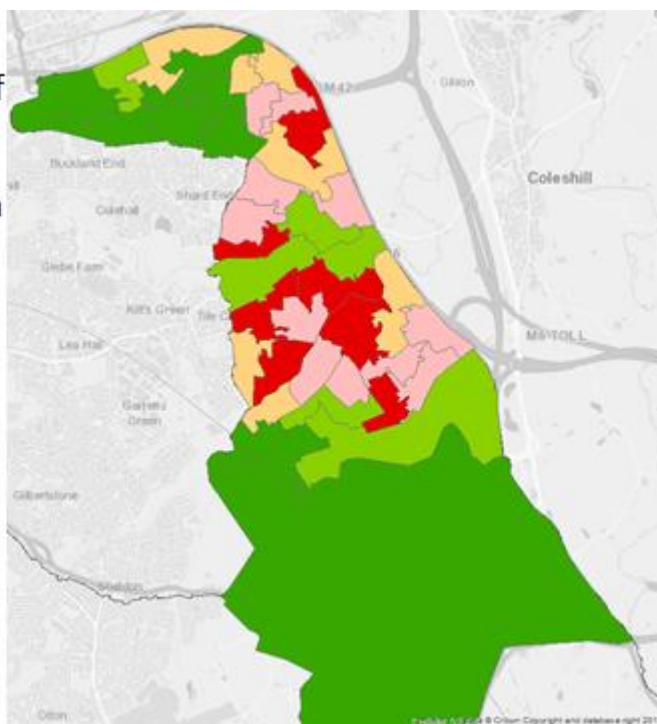
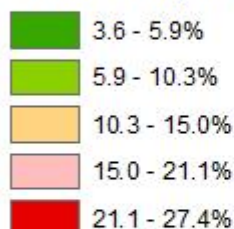
	North Claimants	% 16-64 Year Olds		
		North	Solihull Average	England
ESA & incapacity benefits	3,270	9.1%	5.0%	5.8%
Job seekers allowance	910	2.5%	1.1%	1.1%
Lone parents on Income Support	945	2.6%	1.1%	1.0%
Others on income related benefits	105	0.3%	0.1%	0.2%
All Out of Work Benefits	5,230	14.6%	7.3%	8.1%

Source: DWP

The map below shows that while on average 14.6% of the working age population in North Solihull claim an out of work benefit that figure rises to over 20% across substantial parts of the three north Solihull regeneration wards.

16-64 Year Olds Claiming an Out of Work Benefit

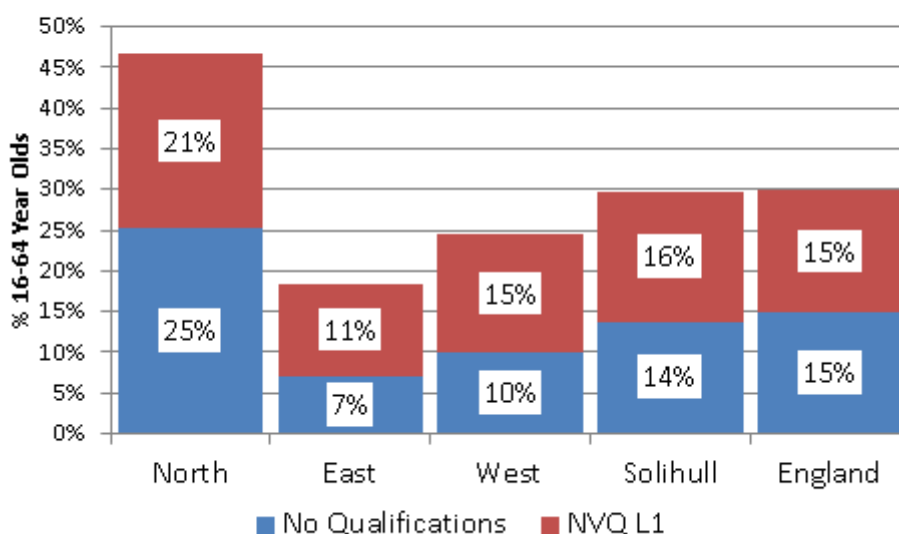
% 16-64 Population



Source: DWP

Alongside health, qualification levels are one of the main barriers to employment. 25% of working age residents have no qualifications, with a further 21% qualified to just NVQ level 1. At the other end of the spectrum only 14% have NVQ level 4+ qualifications (degree level and above) compared to the Solihull and England averages of 32% and 30% respectively. This represents a much lower skills base than elsewhere in Solihull and across England as a whole.

Working Age Residents with Low Qualifications Levels



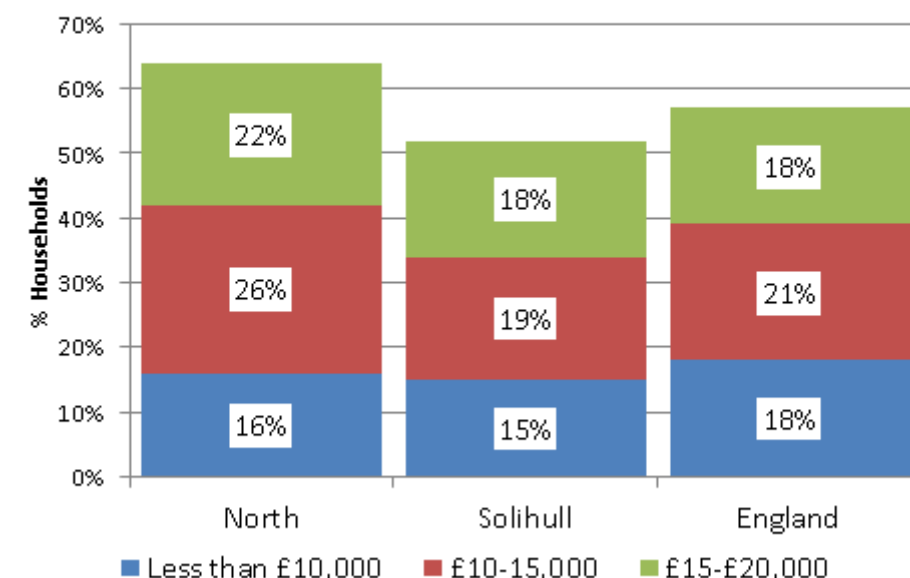
Source: ONS Census 2011

The relatively low skills base is reflected in above average levels of worklessness whilst also dictating the type of employment undertaken by many of those in work. This is shown by a comparison of the occupations of those in employment in North Solihull compared to the rest of the borough and national average. For instance, 27% of North Solihull residents work in process or elementary occupations with 16% working in managerial or professional roles. For the rest of Solihull the proportions are 11% process & elementary and 38% managerial & professional.

Incomes and Poverty

64% of households in the North Solihull locality have an annual income of less than £20,000 compared with the Solihull and England averages of 52% and 57% respectively. However, the proportion on the lowest levels of annual incomes (£10,000 or less) are broadly in-line with the average.

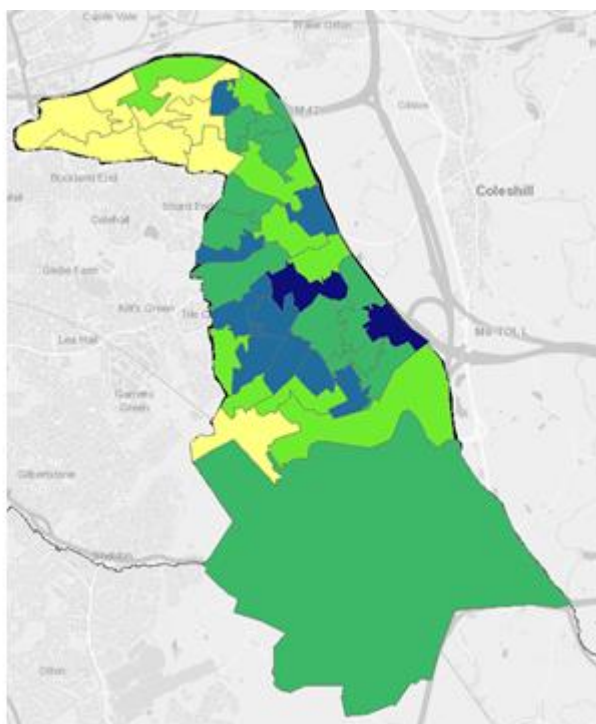
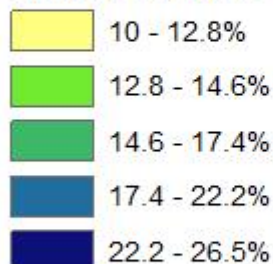
Annual Household Incomes



Source: ONS

Households with Annual Incomes of £10,000 or Less in North Solihull

% Households



Source: ONS

At the end of 2017 DWP statistics show that 6,350 individuals in North Solihull were claiming housing benefit. This represents 14.1% of the 18+ population, proportionally far more than either East (2.7%) or West (4.5%) Solihull and nearly double the number across England as a whole (8.5%).

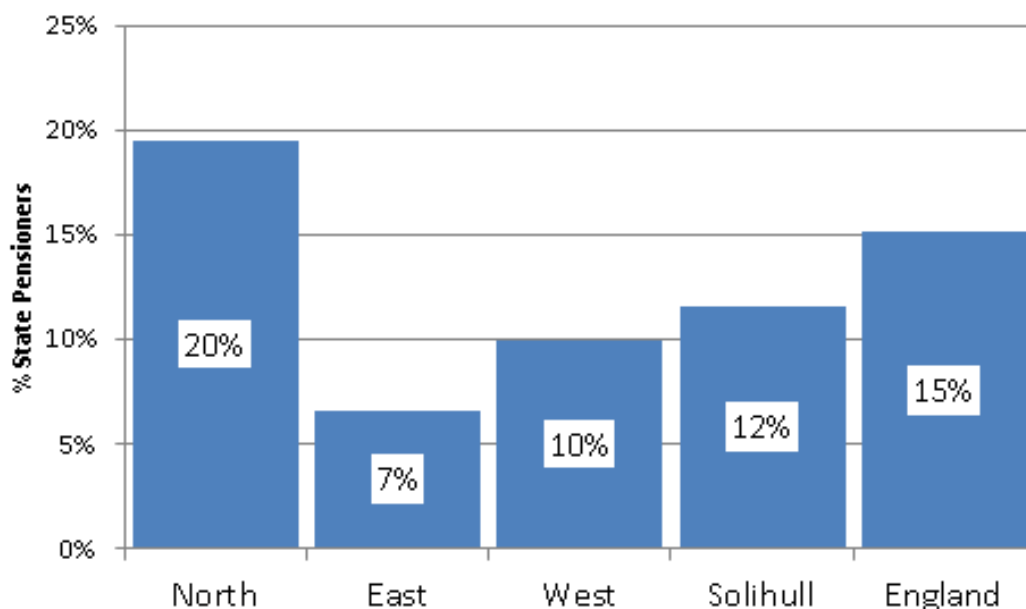
Just over 29% of claimants in North Solihull are under the age of 35, with 25% aged 65 and over, including over 1,100 claimants aged over 70 (18% of total). The housing benefit claimant rate is well above the England average for all age groups in North Solihull.

Age	Housing Benefit Claimants by Age Group				
	North Claimants	% of All Claimants		Rate (% Population)	
		North	England	North	England
Under 25	391	6%	4%	8%	3%
25 to 34	1,458	23%	16%	19%	8%
35 to 44	1,084	17%	18%	17%	10%
45 to 54	1,038	16%	18%	12%	9%
55 to 64	787	12%	14%	12%	8%
65+	1,594	25%	29%	15%	11%
Total	6,352			14%	8%

Source DWP

At the end of 2017 there were 2,140 older people in the North Solihull locality claiming pension credits. This represents 19.5% of all state pensioners in the area, a higher proportion than the Solihull (11.6%) or England (15.1%) averages.

Pensioners Claiming Pension Credits



Source: DWP

The latest data shows that in May 2016 there were 3,490 children aged 0-15 living in in out of work benefit household in North Solihull with a further 355 young aged 16-18 doing so. The proportion of children and young people living in these out of work benefit households is proportionally much higher in North Solihull than elsewhere in the borough and across England as a whole.

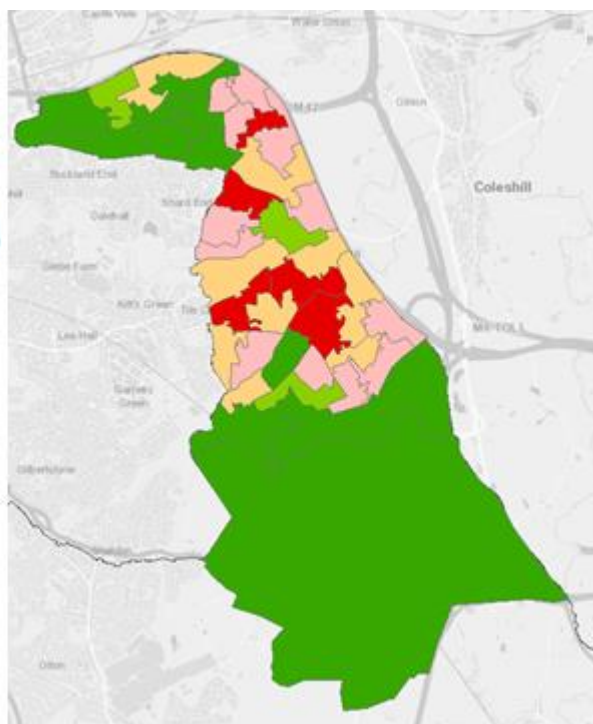
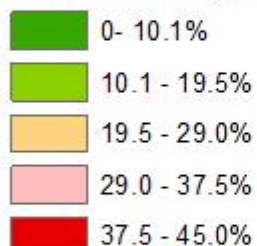
	% Children Living in an Out of Work Benefit Household	
	Aged 0-15	Aged 0-18
North Solihull	28.0%	26.1%
West Solihull	6.6%	6.4%
East Solihull	4.4%	4.3%
Solihull Average	12.7%	11.9%
England	14.0%	13.4%

Source: DWP May 2016

On average 28% of children aged 0-15 live in out of work benefit household in North Solihull, although this masks a considerable range at LSOA neighbourhood level – from 45% in Chelmsley Wood Town Centre to less than 5% in parts of Castle Bromwich. As the map below shows more than one in three children live in an out of work benefit household in a significant number of neighbourhoods in the three regeneration wards.

Children Aged 0-15 Years Living in an Out of Work Benefit Household

% Children Aged 0-15

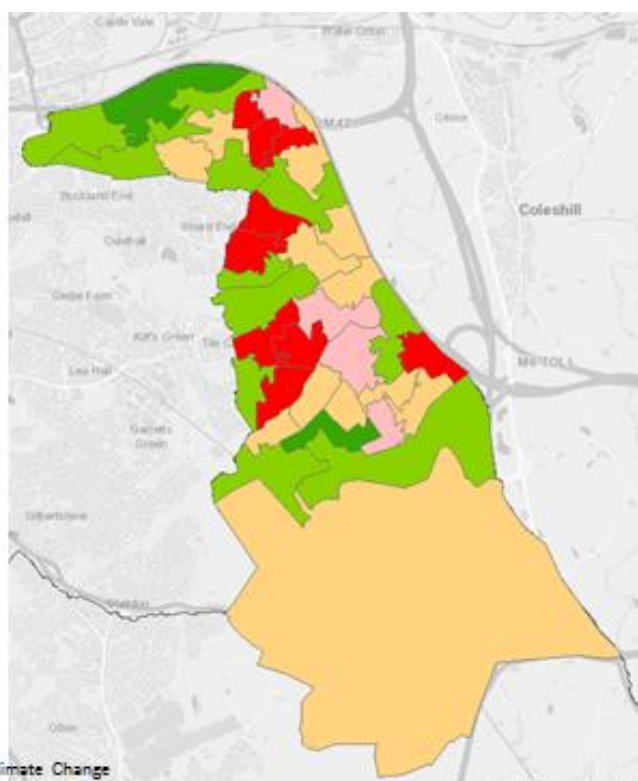
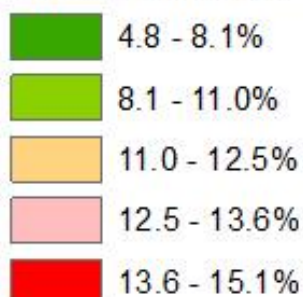


Source: DWP

The latest data shows that 2,956 households in North Solihull are classified as being in fuel poverty. At 11.8% of all households in the locality this is above both the Solihull (10.6%) and England (11%) averages. Within Solihull the percentage of households in fuel poverty ranges from over 14% in parts of the regeneration wards to less than 10% in Castle Bromwich.

Households in Fuel Poverty

% Households



Source: Department for Business, Energy & Climate Change

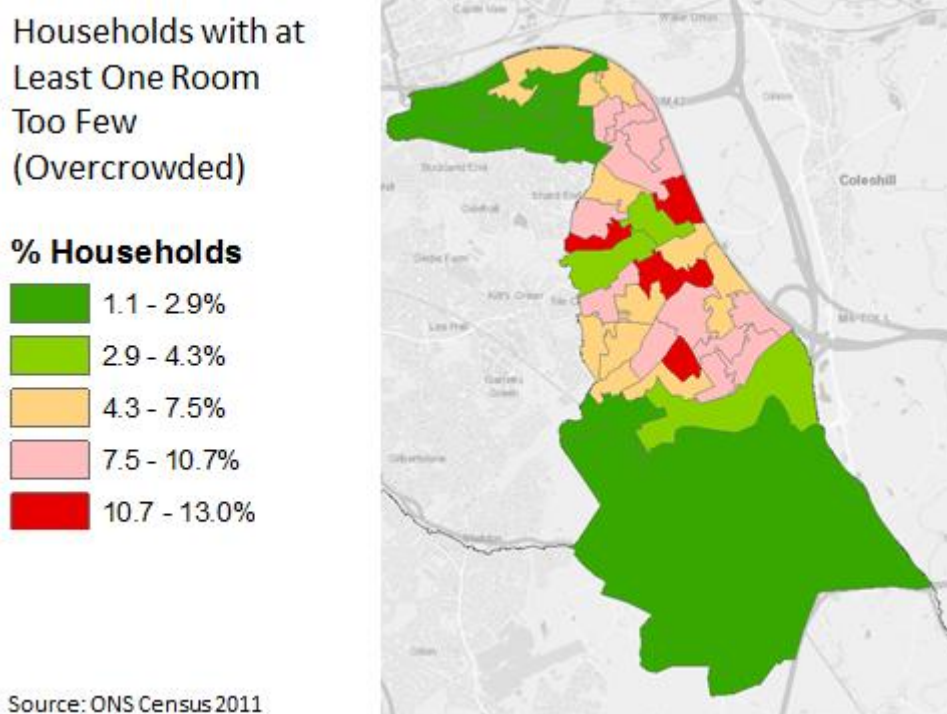
Housing Need

At the time of the 2011 Census 1,771 households in the North Solihull locality had at least one room too few for the number of people in that household. On this basis 7.2% of households in North Solihull were classified as overcrowded. This is higher than elsewhere in Solihull, but below the England average (8.7%). On a similar basis 4.6% of households in North Solihull had at least one bedroom too few, in-line with the England average.

	North Households	% Overcrowded Households		
		North	Solihull Average	England
At least one room too few	1,771	7.2%	4.5%	8.7%
At least one bedroom too few	1,127	4.6%	2.6%	4.6%

Source: ONS Census 2011

Within North Solihull the proportion of households deemed to have at least one room too few ranges from over 10% in parts of the three regeneration wards to less than 5% in the majority of Castle Bromwich, Marston Green and North Bickenhill.



A total of 3,178 households with a North Solihull address are on the Housing Register and classified as having a housing need (Bands A-E)². This represents 12.9% of all households in North Solihull compared to 3.2% elsewhere in the borough. The North Solihull locality accounts for 62% of all Solihull households on the Housing Register.

² Includes only those with an active status with a local address (excludes entries on Housing Register that give a care of address in Solihull)

There are 548 North Solihull households classified as being in urgent housing need (Bands A-B). This represents 2.2% of all households in North Solihull compared to 0.5% elsewhere in the borough.

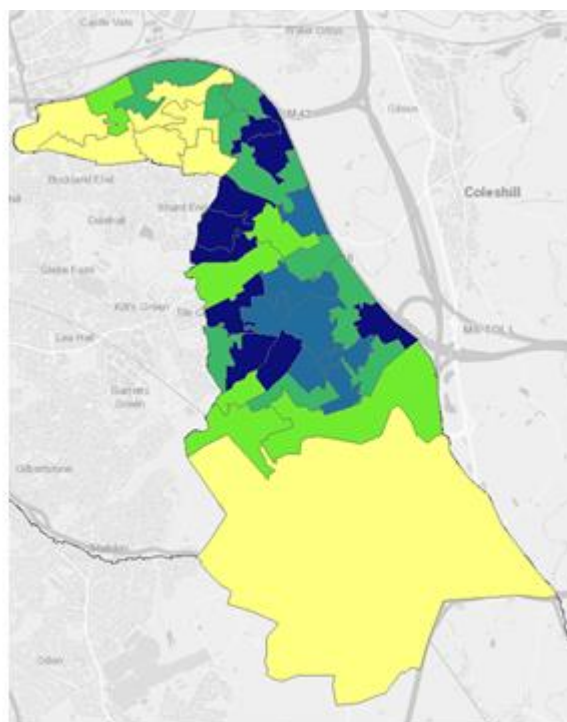
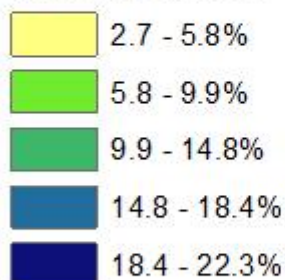
Bands	North Solihull Households	% of all Households			
		North	East	West	Solihull Average
A	66	0.3%	0.0%	0.0%	0.1%
B	482	2.0%	0.2%	0.5%	0.9%
C2	235	1.0%	0.1%	0.2%	0.4%
C3	17	0.1%	0.0%	0.0%	0.0%
D	1,092	4.4%	0.6%	1.5%	2.2%
E	1,286	5.2%	0.9%	1.5%	2.4%
All Bands A-E	3,178	12.9%	1.8%	3.7%	6.0%
All Bands A-B	548	2.2%	0.3%	0.5%	1.0%

Source: SMBC

Within North Solihull the proportion of households with a housing need (bands A-E) ranges from over 20% in parts of the regeneration wards to less than 5% in some neighbourhoods of Castle Bromwich.

Households on Housing Register with a Housing Need (Bands A-E)

% Households



Source: SMBC

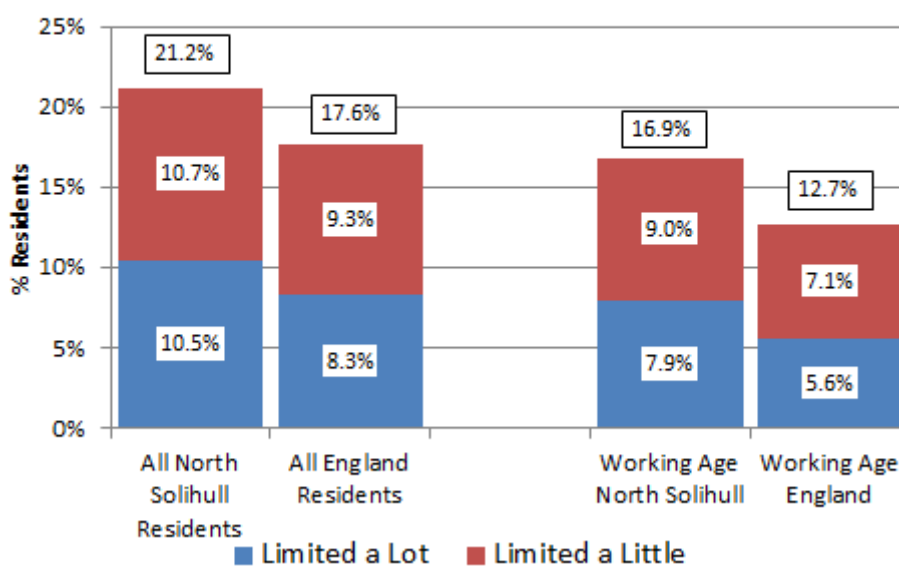
Adult Health and Wellbeing

21% of the North Solihull population say that their day to day activities are limited by long-term illness or disability, compared with the England average of less than 18%. A similar differential is evident among those of working age (17% compared to 13%).

	North	North	Solihull	England
Whole Population				
Day-to-day activities limited a lot	6,101	10.5%	8.2%	8.3%
Day-to-day activities limited a little	6,210	10.7%	9.7%	9.3%
All Limited	12,311	21.2%	17.9%	17.6%
Day-to-day activities not limited	45,787	78.8%	82.1%	82.4%
Working Age Population (Age 16-64)				
Day-to-day activities limited a lot	2,904	7.9%	4.9%	5.6%
Day-to-day activities limited a little	3,287	9.0%	6.9%	7.1%
All Limited	6,191	16.9%	11.8%	12.7%
Day-to-day activities not limited	30,521	83.1%	88.2%	87.3%

Source: ONS Census

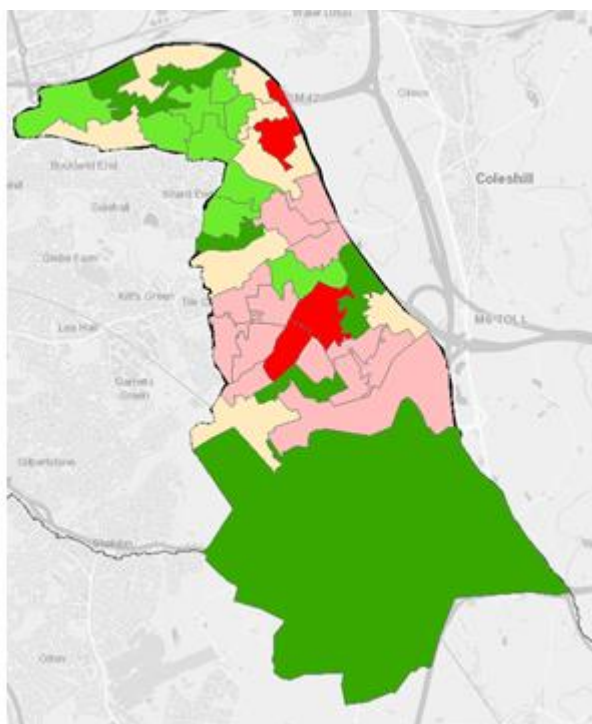
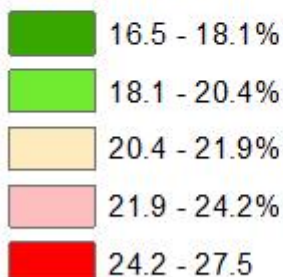
Population Whose Day to Day Activities are Limited by Ill Health or Disability



As the map below shows residents in the three North Solihull regeneration wards are far more likely to say that their day to day activities are limited than those in Castle Bromwich, with more than 20% of the population affected in significant numbers of the regeneration area LSOA neighbourhoods.

Residents Whose Day to Day Activities are Limited by Long Health or Disability in North Solihull

% Population

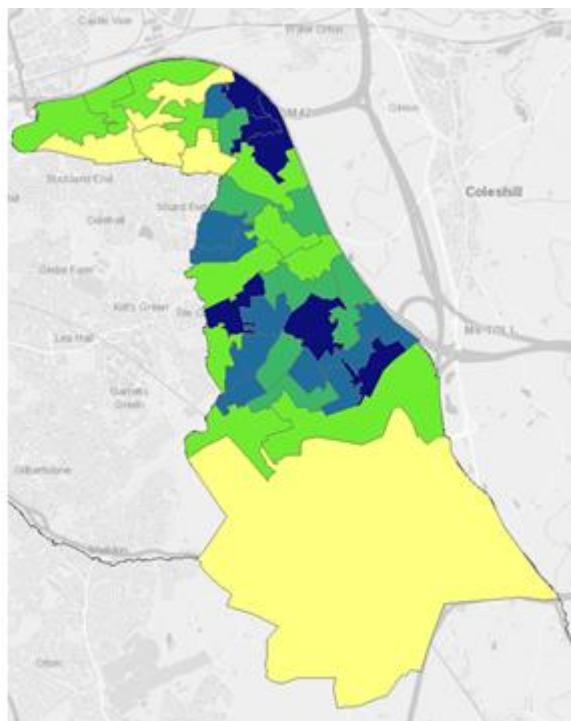
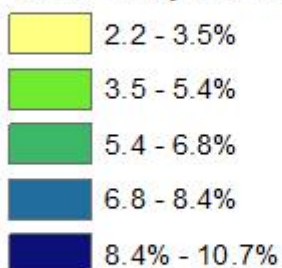


Source: ONS Census 2011

A total of 2,855 individuals in North Solihull receive Disability Living Allowance, equating to 6.1% of the 16+ population, compared to the Solihull average of 3.8% and the England average of 4.0%.

Residents aged 16+ receiving Disability Living Allowance

% 16+ Population



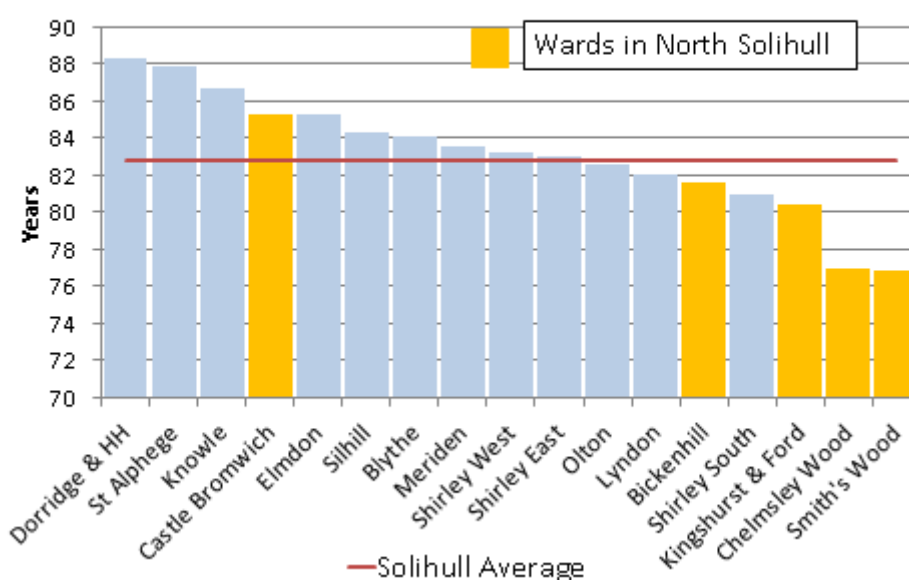
Source: DWP

Life expectancy at birth is, with the exception of Castle Bromwich, below the Solihull average for wards in the North Solihull locality. This applies to both males and females and is consistent with the self reported health measures in the Census.

	Life Expectancy at Birth (Years) 2014-16		
	All People	Males	Females
Bickenhill	81.6	80.6	82.5
Castle Bromwich	85.3	82.9	87.6
Chelmsley Wood	77	75.2	78.7
Kingshurst & Fordbridge	80.4	76.5	84.2
Smiths Wood	76.9	74.9	78.6
Solihull Average	82.8	80.9	84.7

Source: SMBC

Life Expectancy at Birth 2014-16

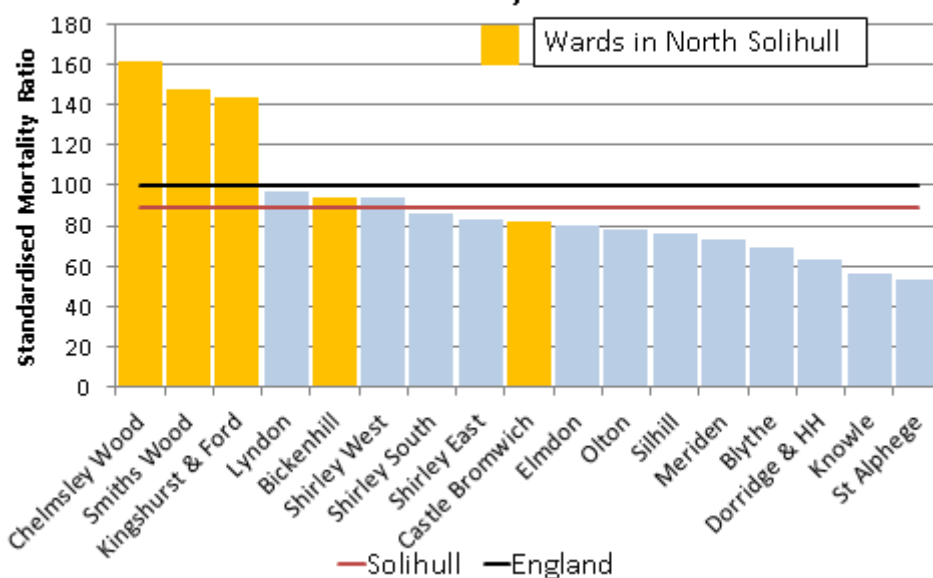


Deaths under the age of 75 (classified as premature mortality) are more common in the three North Solihull regeneration wards than across England as a whole. Bickenhill and Castle Bromwich have a lower standardised mortality ratio than the England average and are broadly in-line with that for Solihull as a whole. This pattern applies to early deaths from cancer, circulatory disease and coronary heart disease.

	Deaths Under Age of 75 (Standardised Mortality Ratio)			
	All Causes	Cancer	Circulatory Disease	Coronary Heart Disease
Bickenhill	94	97	82.4	77.4
Castle Bromwich	82	110.6	50.3	66.2
Chelmsley Wood	161.3	173.9	169.1	160.2
Kingshurst & Fordbridge	143.6	144.6	129.7	147.5
Smiths Wood	148	137.8	164.9	168.9

Solihull Average	89	96.9	81	81.2
England Average	100	100	100	100
Source: Public Health England				

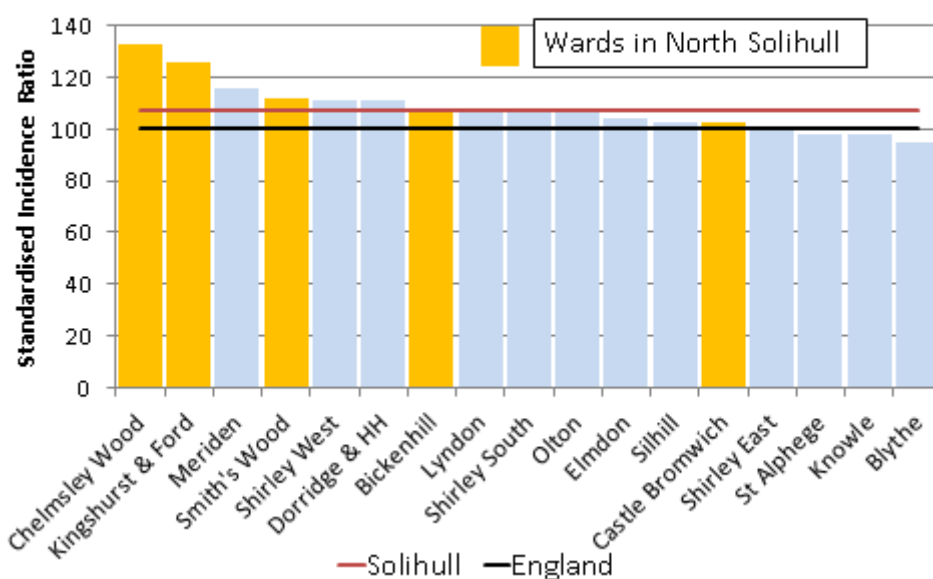
Premature Mortality (Deaths Under Age of 75)



Source: Public Health England

The incidence of cancer is higher in the North Solihull regeneration wards than across England as a whole and towards the upper end of the spectrum for Solihull.

Incidence of All Cancers



Source: Public Health England

However, the pattern varies by type of cancer, with lung cancer much more prevalent in North Solihull than elsewhere in the borough, but breast cancer and prostate cancer less common.

	Cancer Incidence (Standardised Incidence Ratio)				
	All Cancer	Breast Cancer	Colorectal Cancer	Lung Cancer	Prostate Cancer
Bickenhill	107.6	98.7	104.9	114	125.8
Castle Bromwich	102.1	97.5	85.4	88.4	99.5
Chelmsley Wood	132.6	97.5	134	205.3	122.6
Kingshurst & Fordbridge	125.4	101.3	123.5	177.9	129.2
Smiths Wood	111.9	86.7	98.3	160.4	88.3
Solihull Average	107.1	105.4	103.3	90.5	137.8
England Average	100	100	100	100	100

Source: Public Health England

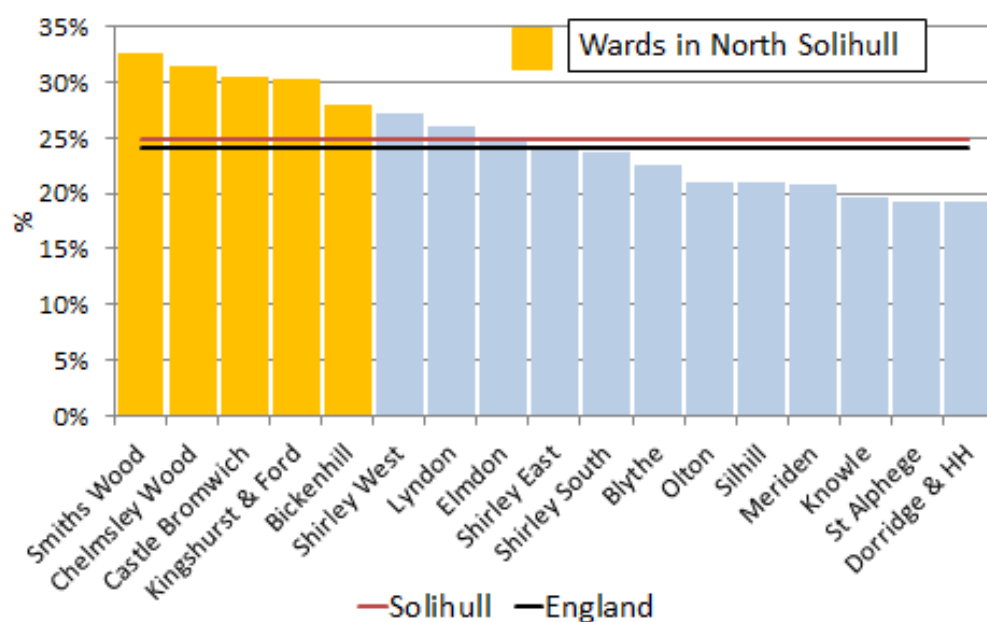
Modelled estimates from Public Health England show that proportionally more adults in the North Solihull locality are obese than across England as a whole, with proportionally fewer eating healthily. This differential is particularly marked in the three North Solihull regeneration wards.

The modelled estimates of the number of binge drinking adults is only marginally higher than the England average in North Solihull, although hospital data shows that stays for alcohol related harm are much higher than average in the North Solihull regeneration wards.

	Obese adults	Binge drinking adults	Healthy eating adults
Bickenhill	28.0%	21.0%	25.8%
Castle Bromwich	30.5%	21.3%	25.4%
Chelmsley Wood	31.5%	23.3%	17.8%
Kingshurst & Fordbridge	30.3%	22.7%	18.1%
Smiths Wood	32.6%	22.1%	17.6%
Solihull	24.9%	20.2%	28.5%
England	24.1%	20.0%	28.7%

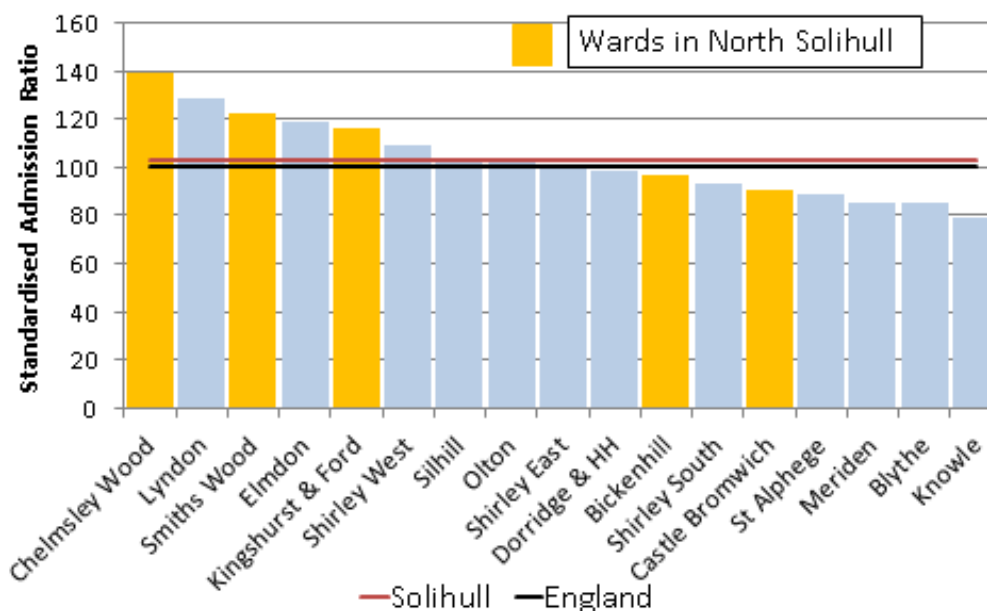
Source: Public Health England

Obese Adults



Source: Public Health England

Hospital Stays for Alcohol Related Harm



Source: Public Health England

Data from the Solihull Place Survey shows that 15% of North Solihull respondents say that they have not been physically active over the last week, slightly more than the Solihull average (10%). Although the proportion who say that they are active on a daily basis is nearly the same (59% compared to 60% for Solihull).

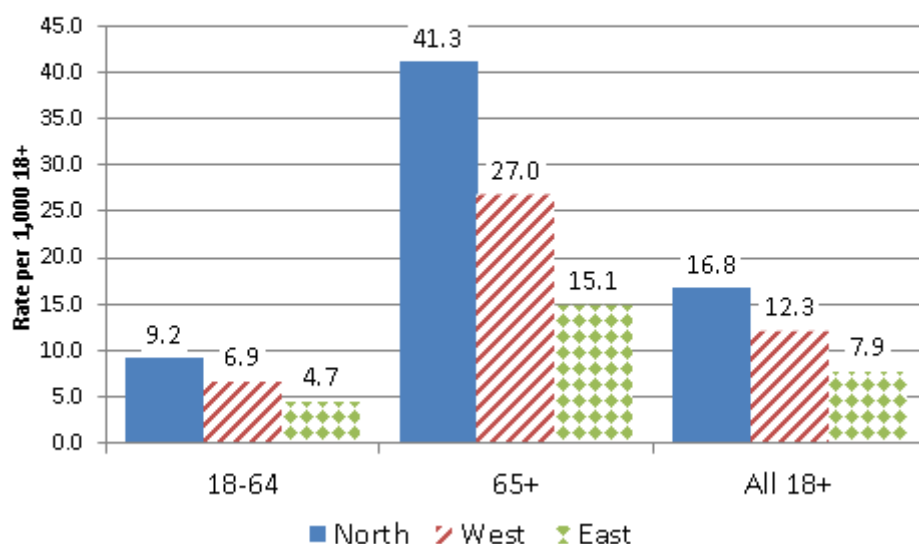
On how many of the last 7 days were you physically active continuously for 20 minutes or longer?			
	North Total	% Respondents	
		North	Solihull Average
None	28	15%	10%
1 to 2 Days	15	8%	9%
3 to 4 Days	34	18%	21%
5 Days and over	110	59%	60%
Total	188		

Source: SMBC Place Survey 2018

Adult Social Care

There are currently 757 adults in North Solihull aged 18 and over receiving support from Solihull adult social care (316 aged 18-64, 441 aged 65 and over)³. This equates to 16.8 per 1,000 residents the highest rate among the three Solihull localities. North Solihull has proportionally more Adult Social Care clients aged 18-64 and 65+ than elsewhere in the borough.

Adult Social Care Clients (Rate per 1,000 Population)

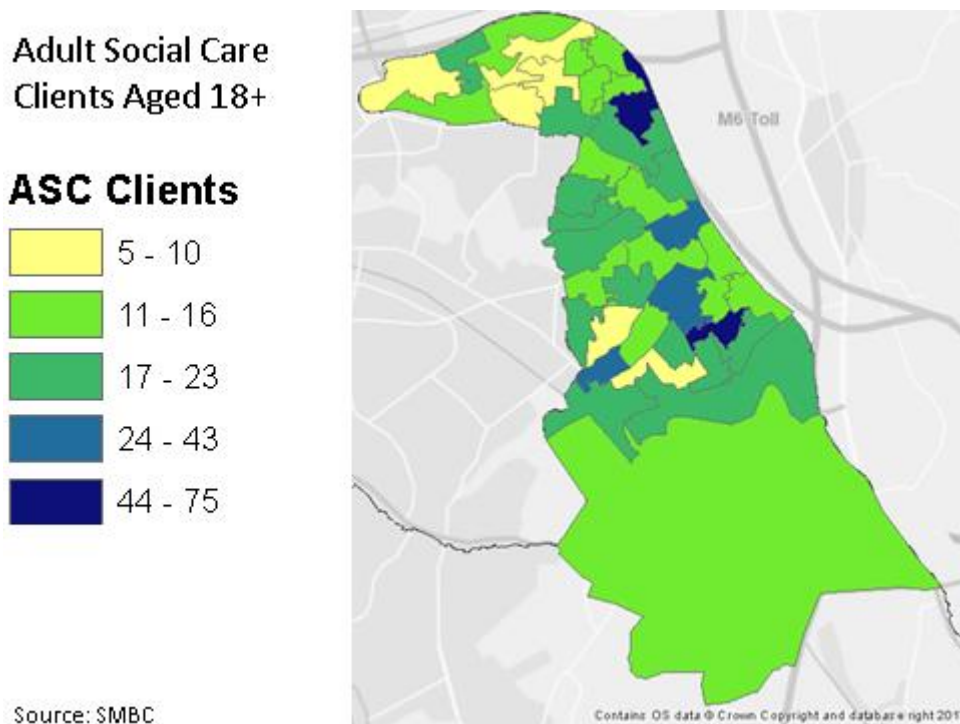


Source: SMBC

73% of adults in North Solihull receiving a package of care from adult social services are in receipt of some form of community support (including homecare and daycare), 23% are in a care home setting (residential, nursing and extra care) and 4% are in Supported Living. Community care is the most common type of support among both adults aged 18-64 (81%) and older people aged 65 and over (68%).

³ Excludes those receiving reablement support

As the map below shows there are particular concentrations of Adult Social Care clients around Chelmsley Wood Town Centre and Craig Croft and in Smith’s Wood ward in the Birds South neighbourhood. These clusters reflect the location of care homes and supported living schemes.

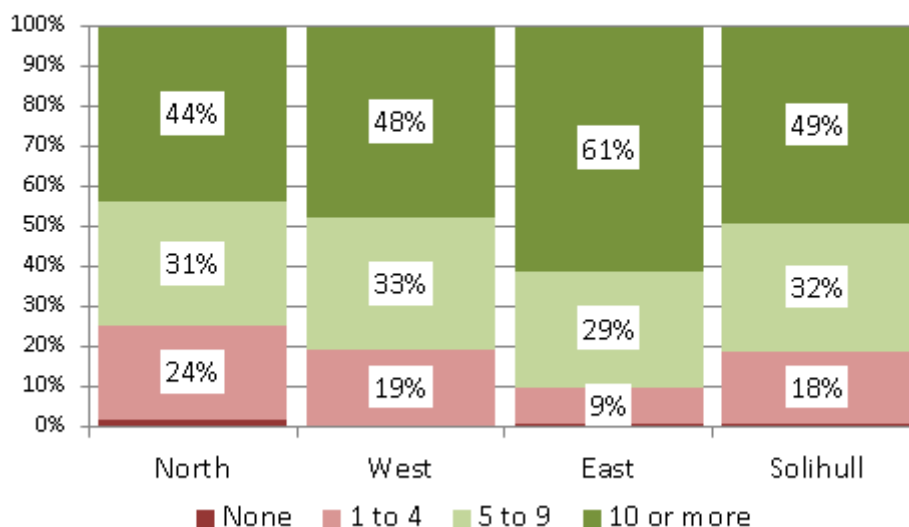


Social Isolation

Responses from the 2018 Place Survey show that people who live in North Solihull are slightly less likely to know five or more people in their immediate neighbourhood, but slightly more likely to say that a neighbour would definitely or possibly help them if they were to fall ill. Like Solihull as a whole most respondents from North Solihull do not feel socially isolated.

Just 2% of North Solihull respondents to the Place Survey say that they do not know anybody in their immediate neighbourhood by name, compared to just under 1% in the rest of the Borough. The differential is more pronounced when the proportion who know just 1 to 4 people by name is compared (24% compared to 16% elsewhere in the borough).

How many People in your Neighbourhood do you Know by Name?



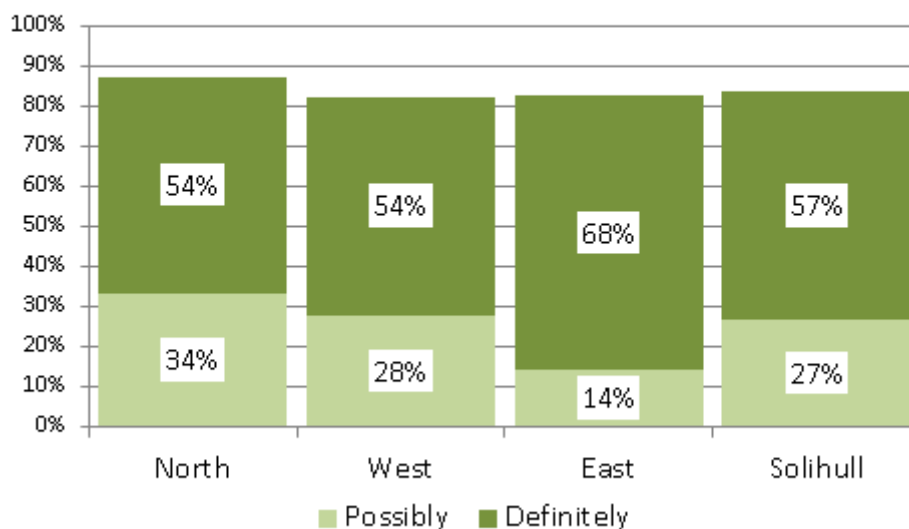
Source: SMBC Place Survey 2018

Around 13% of residents in the North Solihull locality think that it is unlikely that a neighbour would give them practical help if they were to fall ill (8% fairly unlikely, 5% very unlikely) compared to 86% who think that they would either possibly or definitely get help. This is slightly more favourable response than across the rest of Solihull (83% definitely/possibly get help).

	If you were to fall ill, do you think neighbours would give you practical help?		
	North Total	% Respondents	
		North	Solihull Average
Yes, definitely	101	54%	57%
Yes, possibly	63	34%	27%
Fairly unlikely	15	8%	10%
Very unlikely	9	5%	7%
Total	188		

Source: SMBC Place Survey 2018

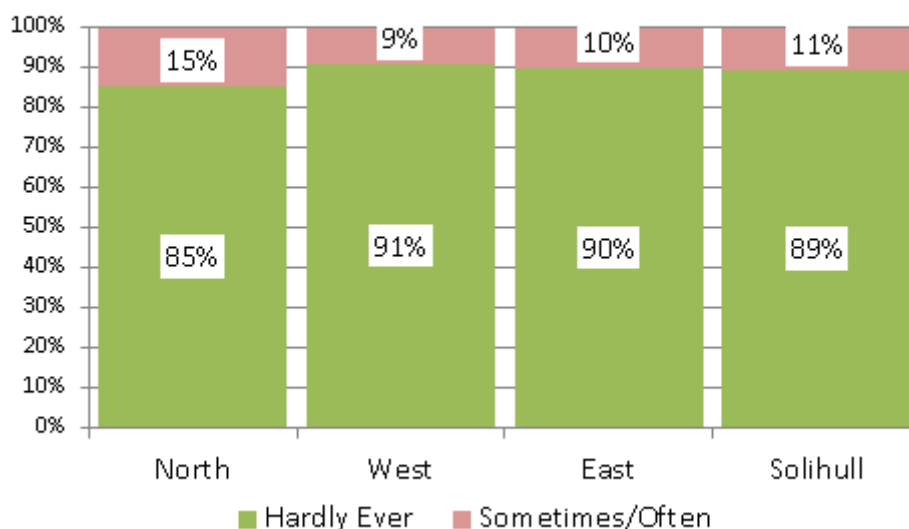
Respondents who think neighbours would help them if they fell ill



Source: SMBCPlace Survey 2018

85% of respondents from North Solihull say that hardly ever feel isolated from others, with 15% saying that they sometimes do. This is a marginally less positive response than across Solihull as a whole.

How Often Do You feel Isolated from Others?



Source: SMBCPlace Survey 2018

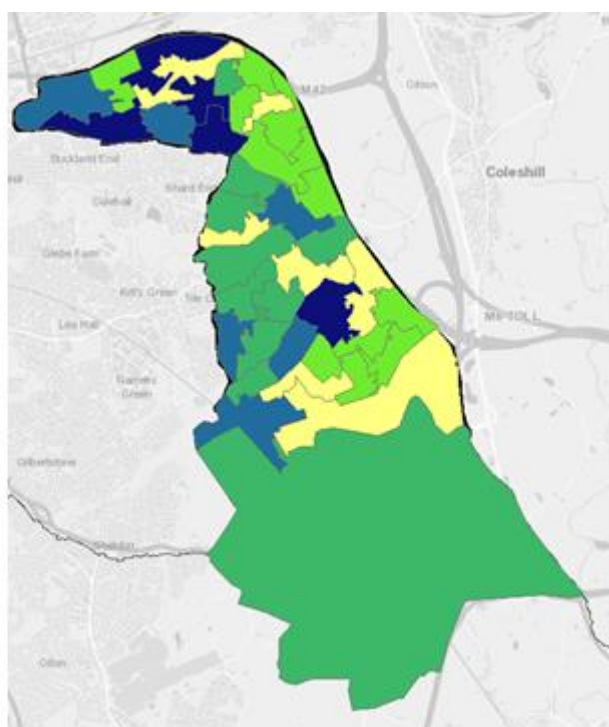
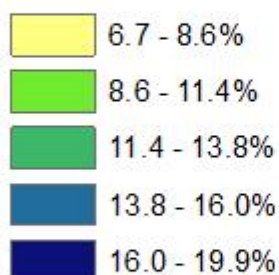
Research evidence shows that there are a variety of risk factors associated with social isolation. For instance, people employed in manual occupations, those with lower level qualifications and those on lower incomes are less likely to extensive social networks. Fear

of crime, ill health and unemployment all described elsewhere in this profile can also be a factor.

Older people living alone and those caring from someone with a long-term condition or disability are particularly vulnerable to social isolation. Older people living alone account for 12% of all households in the North Solihull locality, although the proportion rises to over 15% in many Castle Bromwich LSOA neighbourhoods, Marston Green and a few isolated pockets (such as Chelmsley Wood Town Centre) in the three regeneration wards.

People Living Alone Aged 65 and Over in North Solihull

% Households



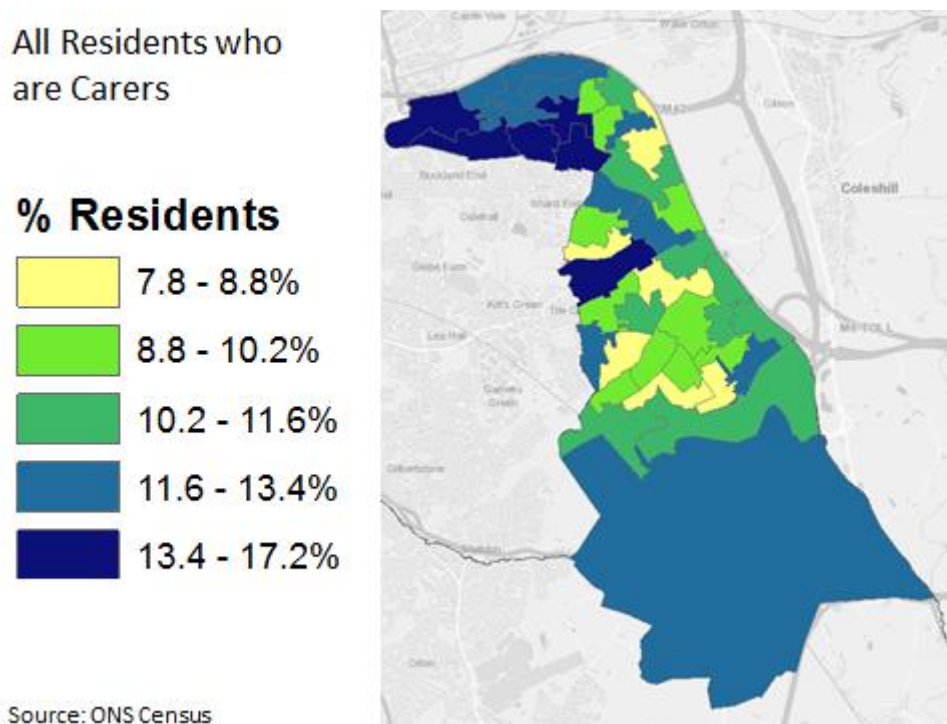
Source: ONS Census 2011

11% of North Solihull residents provide unpaid care for a relative, friend or neighbour, broadly in-line with the Solihull average and just above that for England as a whole. A large majority of these carers provide 1 to 19 hours of care per week, although it is notable that the proportion who care for 50 hours of more is higher in the North Solihull locality than elsewhere in the borough.

	North Total	% Population		
		North	Solihull Average	England
1 to 19 hours care	3,599	6.2%	7.8%	6.5%
20 to 49 hours care	1,017	1.8%	1.4%	1.4%
50+ hours care	1,942	3.3%	2.5%	2.4%
All Carers	6,558	11.3%	11.7%	10.2%
Non-Carers	51,540	88.7%	88.3%	89.8%

Source: ONS Census 2011

As the map below shows, the proportion of residents who provide unpaid care is particularly high in the majority of Castle Bromwich LSOA neighbourhoods and tends to be lower in the three North Solihull regeneration wards.



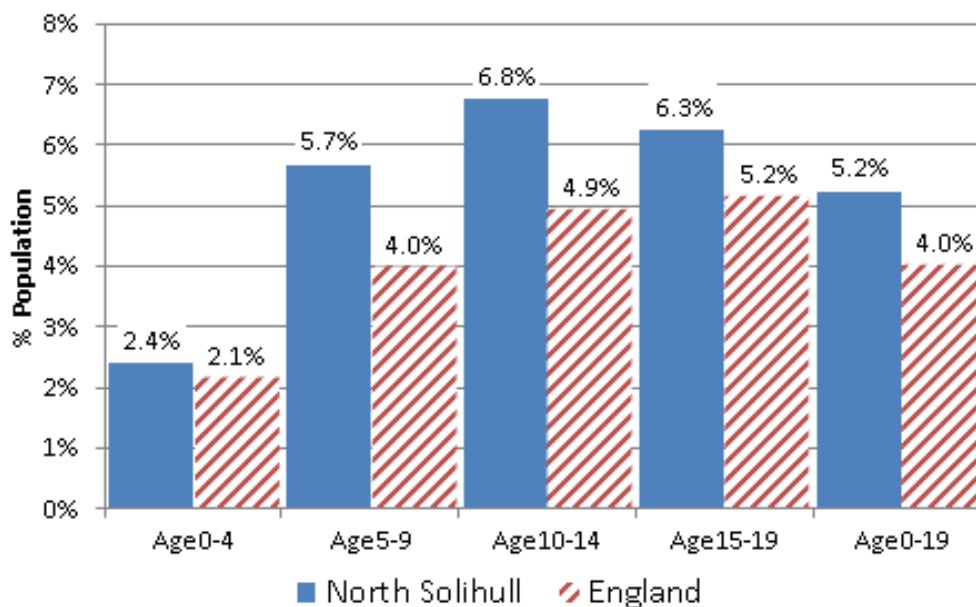
Children & Young People and Education

At the time of the 2011 Census the day to day activities of 802 children and young people aged 0-19 years in the North Solihull locality were limited by their long-term health or disability. This represents 5.2% of all children & young people aged 0-19 in the area, proportionally more than the England average (4%) and elsewhere in Solihull (3.6%). The proportion with whose activities are limited is above average in North Solihull for all age groups.

Children & Young People whose Day to Day Activities are Limited by Long-Term Health or Disability				
Age Group	North	% Population		
		North	Solihull Average	England
Age 0-4 Years	95	2.4%	1.9%	2.1%
Age 5-9 Years	196	5.7%	4.2%	4.0%
Age 10-14 Years	251	6.8%	4.9%	4.9%
Age 15-19 Years	260	6.3%	5.0%	5.2%
All Age 0-19 Years	802	5.2%	4.1%	4.0%

Source: ONS Census 2011

Children & Young People Whose Day to Day Activities are Limited by Ill Health or Disability



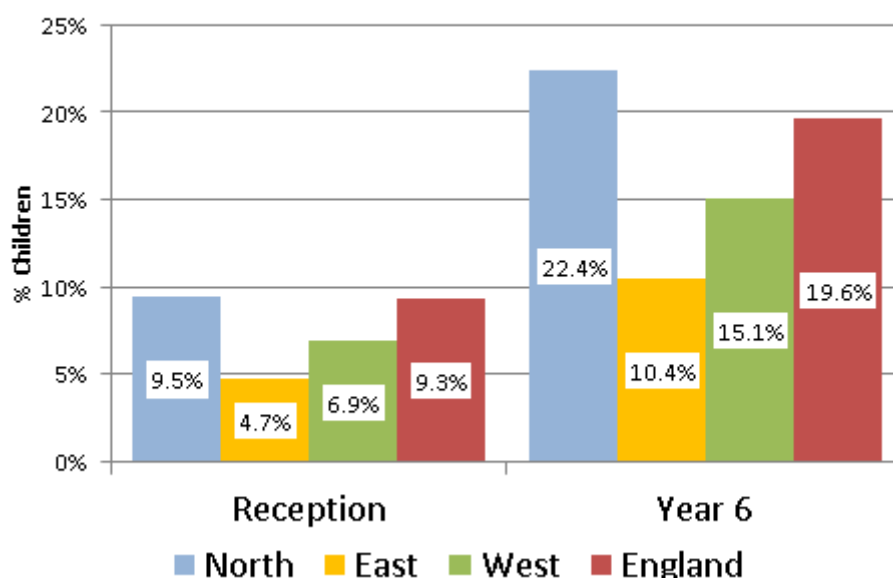
Source: ONS Census 2011

There are proportionally more children classified as obese in the North Solihull locality than either the England or Solihull averages. Obesity amongst children has been rising in recent years. For instance the percentage of children in Year 6 classified as obese in North Solihull has risen from 19.9% in 2010/11 to 22.4% in 2016/17, although this is consistent with borough wide and national trends.

	Obese children (Reception)	Obese children (Year 6)
North Solihull	9.5%	22.4%
East Solihull	4.7%	10.4%
West Solihull	6.9%	15.1%
Solihull	7.4%	16.7%
England	9.3%	19.6%

Source: National Child Measurement Programme, NHS Digital 2014-2017

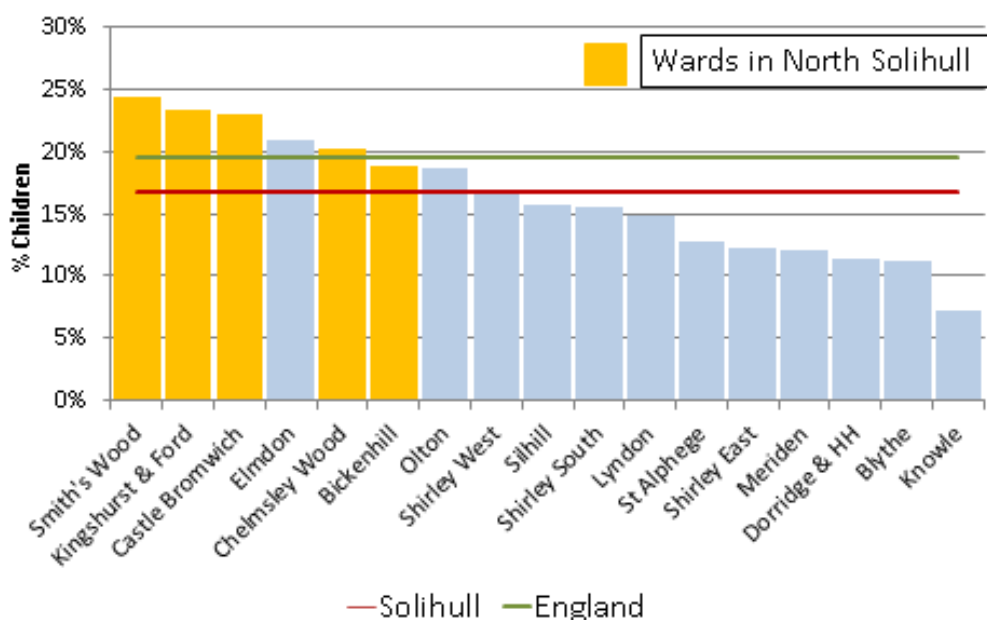
Children Classified as Obese



Source: National Child Measurement Programme, NHS Digital

As the chart below shows wards in North Solihull have among the highest levels of year six obesity in Solihull, with Smith’s Wood, Kingshurst & Fordbridge and Castle Bromwich significantly above the England average.

Children in Year 6 Classified as Obese



Source: National Child Measurement Programme, NHS Digital

Demand for Childrens Services is much higher in North Solihull than elsewhere in the borough. By way of example the table below shows the number of children per 1,000 either

classified as being Children in Need (CIN) or in Child Protection. 58% of all children aged 0-16 years of age known in this way to Solihull Childrens Services live in North Solihull. The relatively high concentration in the North Solihull locality applies across all age groups.

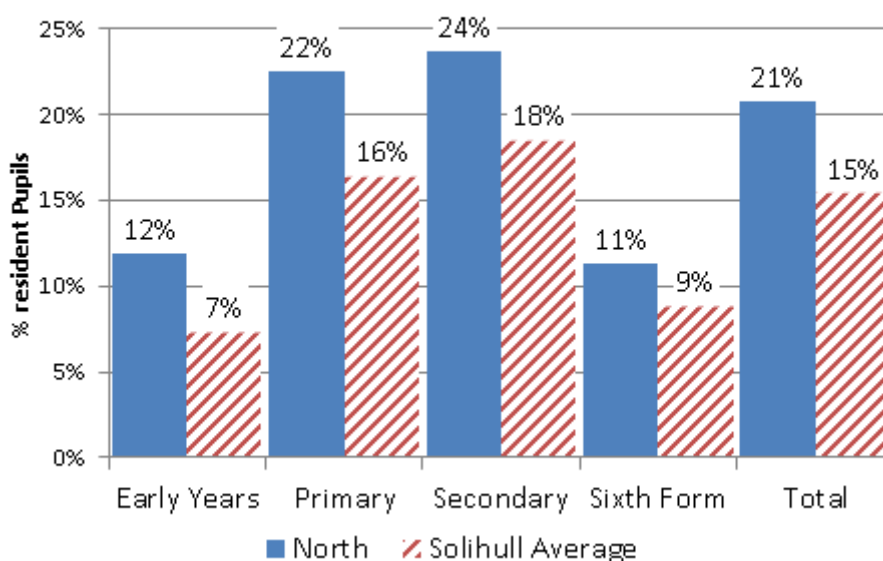
	Children Known to Social services (Children in Need and Child Protection)			
	Number of Children in North	% Solihull Total	Rate per 1,000 Population	
			North	Solihull Average
Under 5	160	68%	38.1	18.9
Age 5-10	181	57%	37.6	20.3
Age 11-16	150	52%	35.4	19.1
All Aged 0-16	491	58%	37.1	19.5
<i>Source: SMBC</i>				

At the time of the Autumn 2017 school Census there were 1,960 children living in North Solihull with a Special Educational Need (353 with an Education or Health Care Plan or Statement of SEN with a further 1,607 receiving SEN support). This equates to 21% of all children, compared to the average of 15% across Solihull as a whole.

As the table below shows the proportion of children living in North Solihull with an SEN is higher than elsewhere in Solihull among all age groups.

% Resident Children with a Special Educational Need				
School Year	North	East	West	Solihull Average
Early Years (Nursery & Reception)	12%	4%	5%	7%
Primary (Years 1-6)	22%	10%	15%	16%
Secondary (Years 7-11)	24%	17%	16%	18%
Further Education (Years 12-13)	11%	7%	8%	9%
Total	21%	11%	14%	15%
<i>Source: SMBC School Census</i>				

Resident Pupils with a Special Educational Need

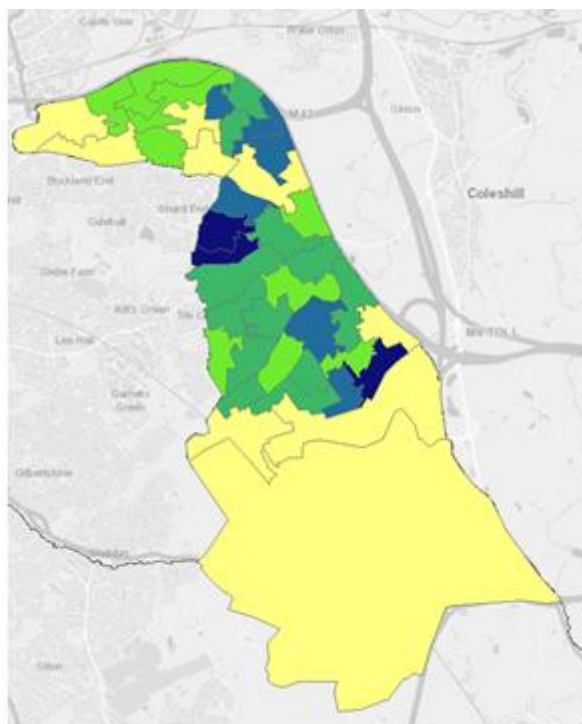
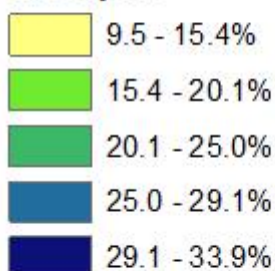


Source: SMBC School Census

The proportion of children with a SEN is well above average in many neighbourhoods in the three regeneration wards. As the map shows there are a considerable number of LSOAs in which more than one in four primary and secondary school age children have a SEN. Particularly high concentrations are evident in Babbs Mill North (34%), Bluebell (34%), Yorkswood (32%) and Chelmsley Wood Town centre (29%).

Primary and Secondary Pupils with a Special Educational Need

% Pupils



Source: SMBC School Census

Not all resident pupils attend a school in North Solihull and not all pupils at a North Solihull school will live in the locality, with cross border flows particularly evident at Secondary school level.

There are 13 primary schools based in the North Solihull locality. The table below shows key metrics for these schools for the school year 2016/17.

Proportionally more pupils attending a North Solihull primary school have a Special Educational Need and are eligible for a Free School Meal. A slightly smaller proportion of pupils achieve the expected standard in reading, writing and Maths at KS2 than elsewhere in Solihull, but North Solihull exceeds the England average on this measure (63% compared to 65%).

Primary schools 2016/17			
Measure	North Solihull Schools	Solihull Average	England
SEN pupils with a statement or EHC plan	1.2%	3.8%	2.9%
SEN support	18.2%	12.1%	12.0%
SEN Total	19.4%	15.9%	14.9%
% Free School Meal	21.8%	15.0%	15.1%
% Pupils Persistent Absentees	11.6%	7.5%	8.3%
% English as Second Language	2.8%	9.7%	20.8%
% Pupils Meeting Expected Standard	62.8%	65.0%	61%
% Pupils Meeting Higher Standard	7.1%	10%	9%
<i>Source: Department for Education</i>			

There are five secondary schools based in the North Solihull locality. The table below shows key metrics for these schools for the school year 2016/17.

Proportionally more pupils attending a North Solihull secondary school are eligible for a Free School Meal than across England as a whole and slightly more have a Special Educational Need (16% compared to 15%). The average attainment 8 per pupil at KS4 is lower than elsewhere in Solihull or the England average. However, it should be noted that percentage of disadvantaged pupils achieving A*-C grades in English & Maths GCSEs is higher than elsewhere in Solihull and the England average (47.5% compared to 43.1% for England).

Secondary schools 2016/17			
Measure	North Solihull Schools	Solihull Average	England
SEN pupils with a statement or EHC plan	1.8%	5.2%	4.3%
SEN support	14.6%	11.5%	10.5%
SEN Total	16.4%	16.7%	14.8%
% FSM	21.8%	13.9%	14.4%
% Pupils Persistent Absentees	18.5%	15.3%	13.5%
% English as Second Language	4.8%	6.3%	16.1%
Average Attainment 8 Score	42.0	47.1	44.6

% Pupils Disadvantaged Pupils Achieving A*-C in English & Mathematics	47.5%	44.5%	43.1%
% Pupils Non-Disadvantaged Pupils Achieving A*-C in English & Mathematics	64.0%	71.7%	70.6%
<i>Source: Department for Education</i>			

Crime and Community Safety

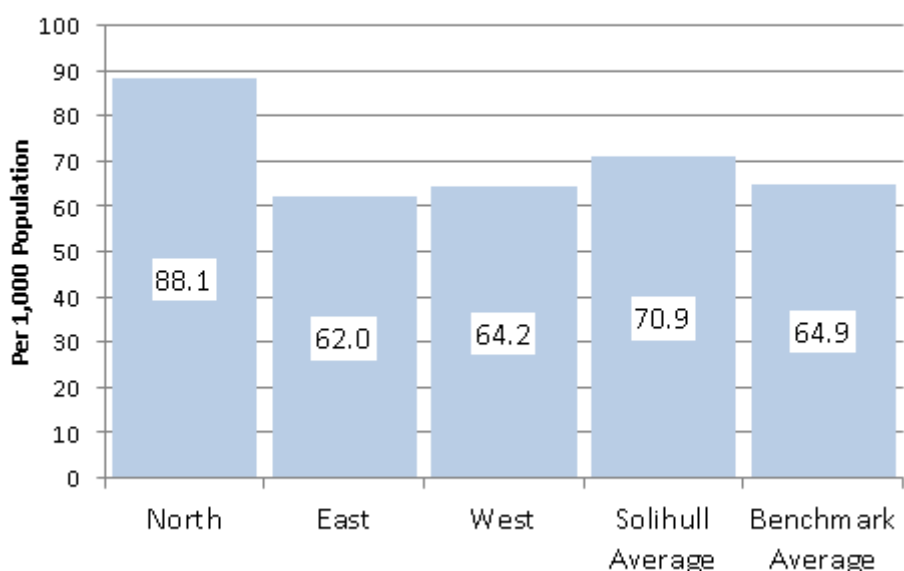
Solihull has the third lowest crime rate compared to the other local authority areas in the West Midlands (out of 7) and is ranked 11 out of 15 among its benchmark group of Local Authorities. Over recent years crime has been increasing, with key trends including rises in burglary, robbery and vehicle crime. However, this is not exclusive to Solihull and the same increases can be seen across the whole of the West Midlands Police Force.

Some areas in Solihull have factors that make them more likely to become crime generators and attractors and therefore account for a higher proportion of crime than others. This is the case with Chelmsley Wood, St Alphege and Kingshurst & Fordbridge where crime rates were 1.5 times the average for Solihull as a whole. By contrast, Knowle had half the average number of crimes with Dorridge & Hockley Heath, Elmdon, Shirley East, Meriden, Blythe and Silhill also well below average.

There were 5,189 total reported crimes recorded in the North Solihull locality in the year to September 2017, representing 35% of all reported crimes in the borough. At 88.1 per 1,000 population North Solihull has the highest crime rate out of the three locality areas where the borough average is 70.9 per 1,000.

	Crime & Safety Demand			
	North Count	% Solihull Total	Rate per 1,000	
			North	Solihull Average
Total Recorded Crime	5,189	35%	88.07	70.86
Other Demand Measures				
Anti-Social Behaviour	1,762	50%	29.91	14.71
Public Safety & Welfare	7,114	35%	120.74	98.06
Road Traffic Collisions - KSI	16	27%	0.27	0.27
Deliberate Fires	89	42%	1.51	1.19
<i>Source: Safer Solihull Strategic Assessment 2018</i>				

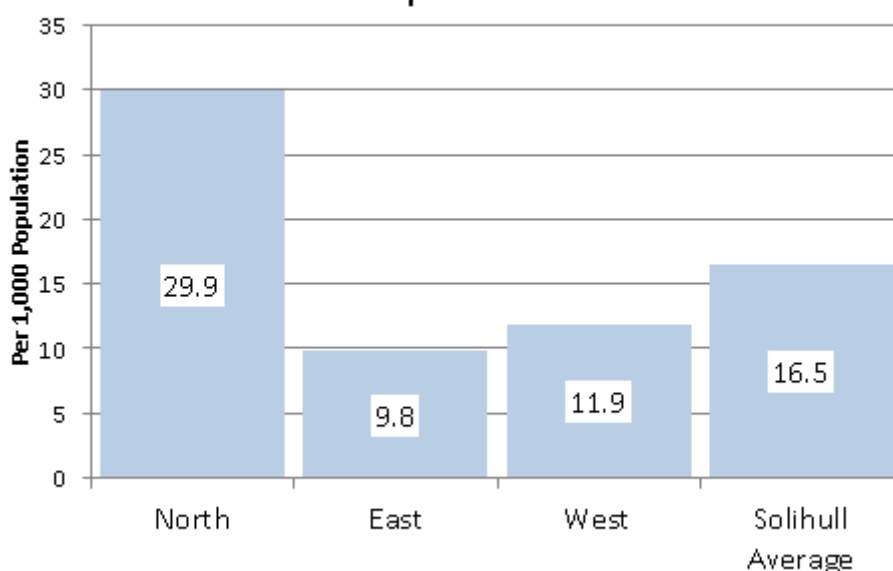
Recorded Crime Rates per 1,000 Population



Source: Safer Solihull Strategic Assessment 2018

There were 1,762 incidents of Anti-Social Behaviour (ASB) in the North Solihull locality in the year to September 2017, representing a half of all ASB in Solihull. At 29.9 per 1,000 population the ASB rate is more than double that recorded in the other two Solihull locality areas.

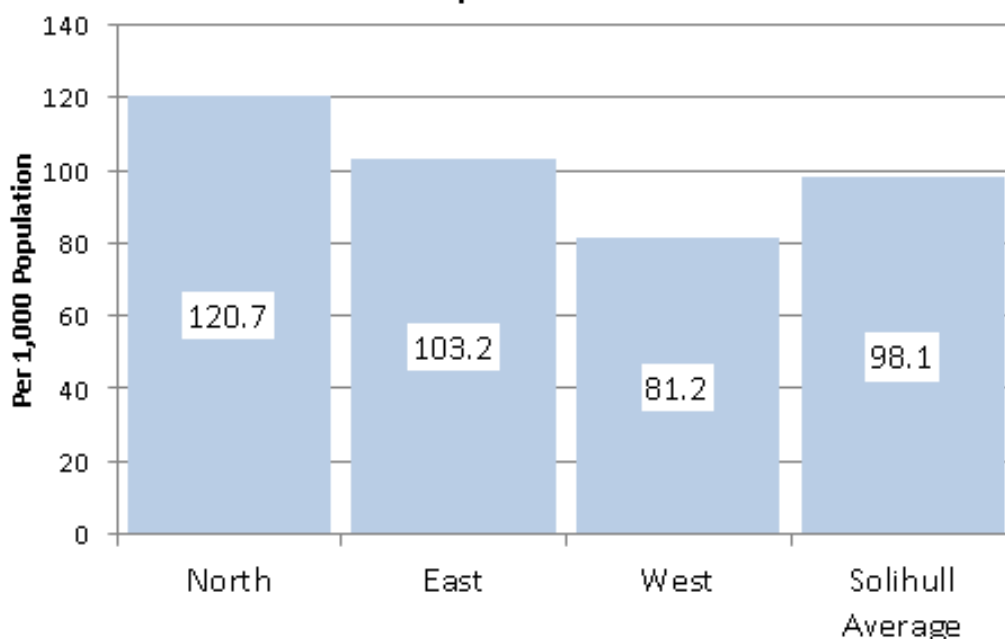
Recorded Anti-Social Behaviour Rates per 1,000 Population



Source: Safer Solihull Strategic Assessment 2018

There were 7,114 Public Safety & Welfare (PSW)⁴ incidents recorded in the North Solihull locality in the year to September 2017. At 120.7 per 1,000 population the PSW rate is the highest in Solihull, although it is notably that the differential between the three localities is much less than ASB.

Recorded Public Safety & Welfare Rates per 1,000 Population



Source: Safer Solihull Strategic Assessment 2018

Total recorded crime in the North Solihull locality increased by 19% in the year to September 2017, higher than the West Midlands Police average of 13.9%. Over the same period there was a fall in Anti-Social Behaviour of nearly 21% in excess of the fall recorded across the West Midlands Police force area as a whole (4.4%).

Offence Group	Oct 15-Sep 16	Oct 16-Sep 17	Difference			
			North Solihull Count	North Solihull	Solihull Average	West Midlands Force
Total Recorded Crime	4,358	5,189	+831	+19.1%	+20.2%	+13.9%
Other Demand Measures						
Anti-Social Behaviour	1,762	1,395	-367	-20.8%	+11.1%	-4.4%
Public Safety & Welfare	7,114	7,425	+311	+4.4%	+6.5%	+1.9%
KSI	16	15	-1	-6.3%	0.0%	-12.2%

⁴ Due to the subjective nature of Anti-Social Behaviour and Public Safety/Welfare, there is a cross over between the two classifications which is why both have been included for analysis. Recordings of incidents of Public Safety/Welfare outnumber Anti-Social Behaviour by approx. 5 to 1.

Deliberate Fires	89	130	41	+46.1%	+47.1%	+27.7%
<i>Source: Safer Solihull Strategic Assessment 2018</i>						

As the table below shows the top 10 offences accounted for 59.9% of Total Recorded Crime in the North area.

Top 10 Individual Offences	Crime Count
Theft from Motor Vehicle	539
Assault Occasion ABH	423
Theft from Shop or stall	383
Criminal Damage to vehicle	379
Make off w/o payment	334
Common Assault	251
Theft of Motor Vehicle	236
Criminal Damage to Dwelling	215
Theft Other	180
Burglary Dwelling	163
<i>Source: Safer Solihull Strategic Assessment 2018</i>	

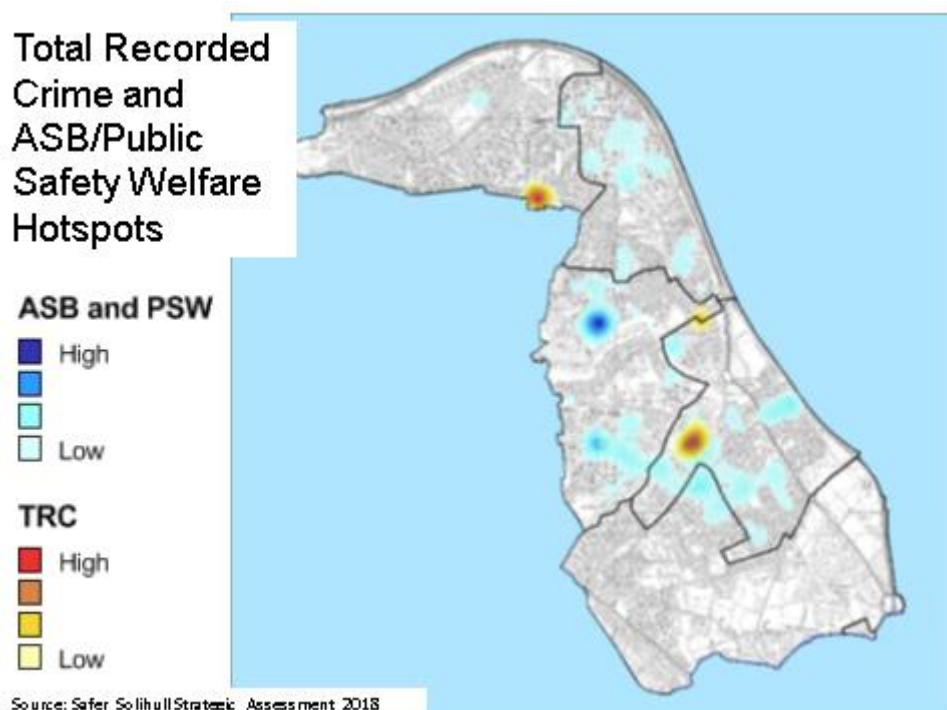
As the table below shows 15 streets in the North Solihull locality accounted for a third of all crime in the area.

Street	Crime Count
Chester Road	635
Bosworth Drive	178
Coleshill Road	123
Cooks Lane	103
Station Road	79
Chelmsley Wood Shopping Centre	77
Forth Drive	77
Moorend Avenue	76
Fordbridge Road	67
Auckland Drive	59
Chelmsley Road	59
Windward Way	53
Bickenhill Parkway	52
Winchester Drive	46
Tamar Drive	43
<i>Source: Safer Solihull Strategic Assessment 2018</i>	

The hotspots for Total Recorded Crime and Anti-Social Behaviour/Public Safety Welfare logs show a considerable overlap within two areas; Chester Road, Castle Bromwich near the Morrison’s Superstore and Chelmsley Wood Shopping Centre.

Within the three visible Total Recorded Crime hotspots, the most common offences were Theft From Shops Stalls and Making Off without Payment which can be expected in areas of high footfall and areas where there are petrol stations.

Across the North area of Solihull, there are multiple Anti-Social Behaviour and Public Safety Welfare hotspots, with one of the most prominent hotspots being near Babb’s Mill Recreation Ground and Kingshurst Way.

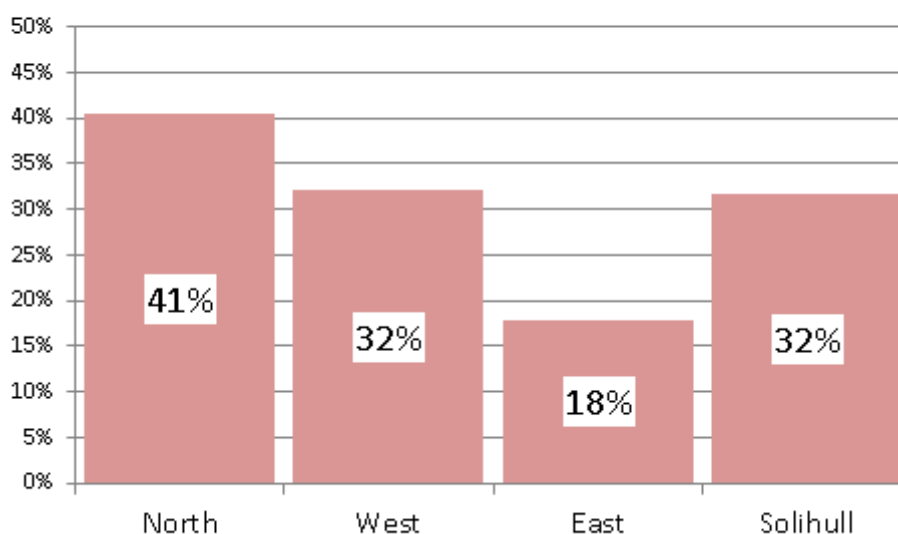


46% of North Solihull respondents to the Solihull Place Survey say that they feel safe in the local area after dark compared to 41% who feel unsafe (18% very unsafe). The proportion of those who feel unsafe is far higher than elsewhere in Solihull (32% West Solihull, 18% East Solihull).

	How Safe Do You Feel After Dark in Your Local Area		
	Total North	% Respondents	
		North	Solihull Average
Very safe	16	9%	17%
Fairly safe	68	37%	37%
Neither safe nor unsafe	17	9%	12%
Fairly unsafe	42	23%	19%
Very unsafe	33	18%	13%
Don't know	8	5%	3%
All Responses	185		
Total Safe	84	46%	54%
Total Unsafe	75	41%	32%

Source: SMBC Place Survey 2018

Respondents Who Feel Unsafe in their Local Area After Dark



Source: SMBC Place Survey 2018

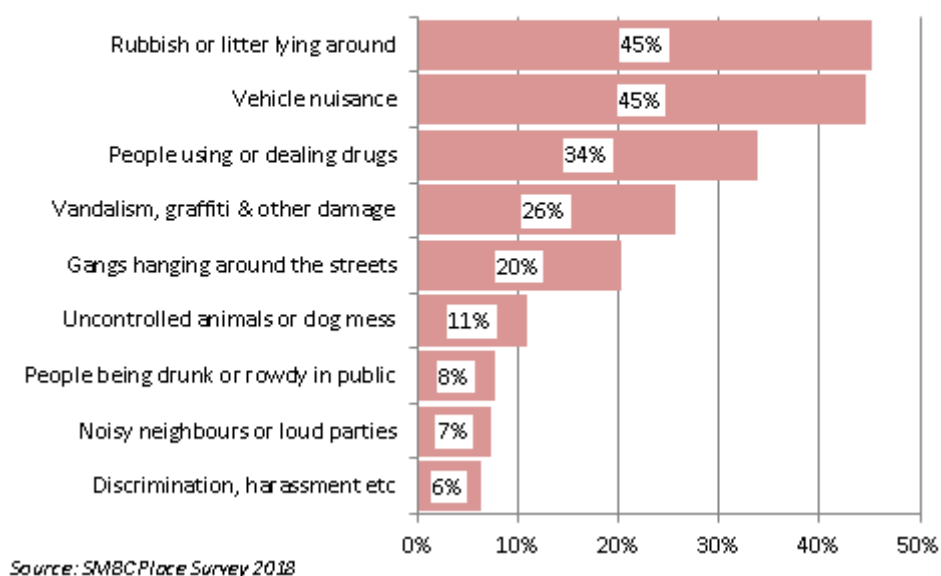
The 2018 Place Survey also asked respondents about nine specific types of ASB in the local area. For most of these types of ASB responses from North Solihull residents were less favourable than elsewhere in the borough.

Rubbish & litter lying around and vehicle nuisance like joyriding and abandoned cars were both considered a problem by 45% of North Solihull respondents, with a third also citing people using or dealing drugs.

% Who Think That There is a Problem in Local Area		
Type of ASB	North Solihull	Solihull Average
Discrimination, harassment or intimidation	6%	8%
Noisy neighbours or loud parties	7%	7%
Vehicle nuisance, like joyriding, abandoned cars etc	45%	32%
Gangs hanging around the streets	20%	18%
Uncontrolled animals or dog mess	11%	14%
People using or dealing drugs	34%	22%
People being drunk or rowdy in public places	8%	8%
Vandalism, graffiti and other deliberate damage to property or vehicles	26%	20%
Rubbish or litter lying around	45%	32%

Source: SMBC Place Survey 2018

Respondents in North Solihull who think there is a problem in their local area



APPENDIX

Borough Map Showing Three Locality Areas

