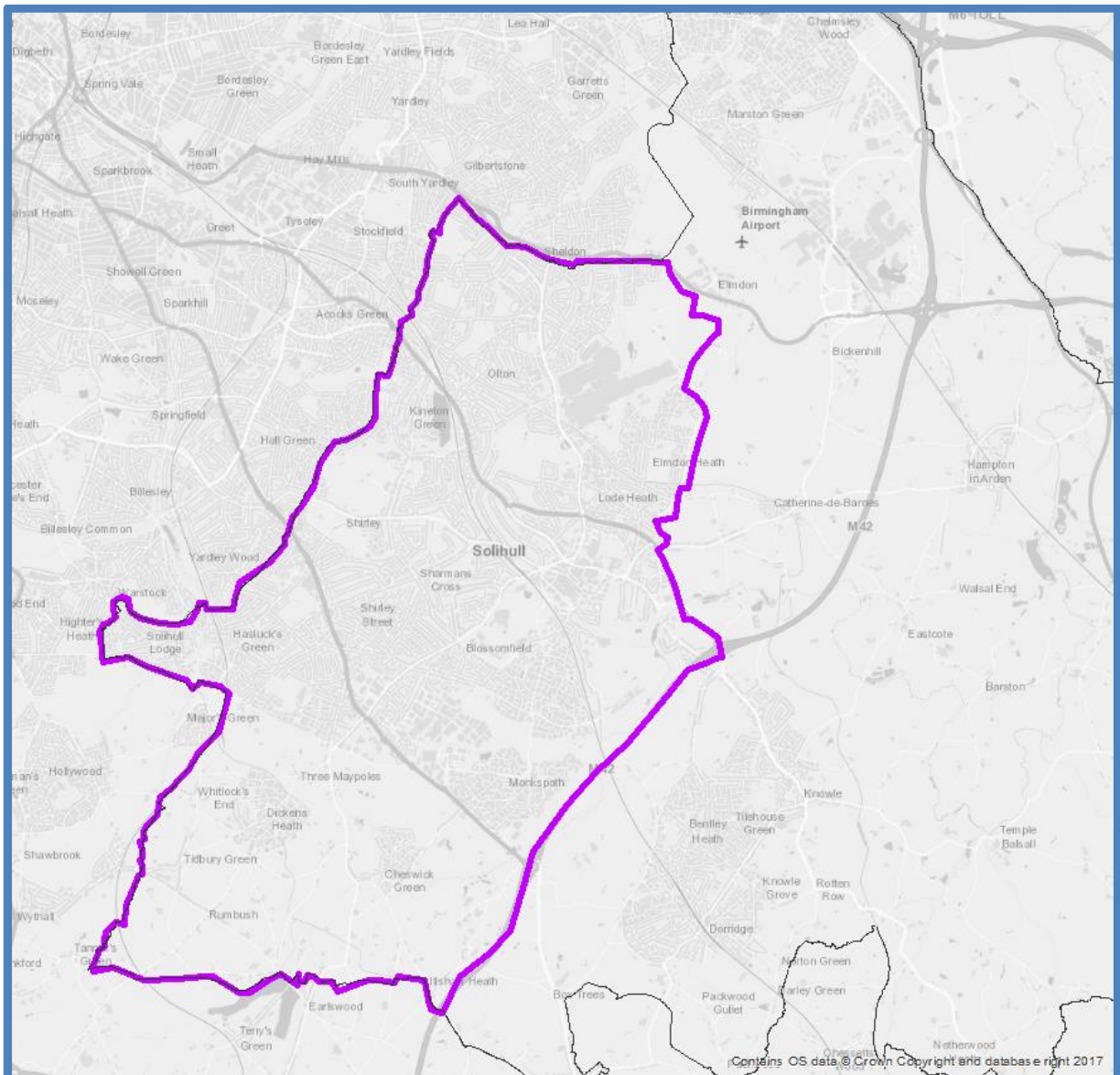


2018 Locality Profile: West Solihull



CONTENTS*page
number*

LOCALITY PROFILE FORWARD	1
LOCALITY LSOA MAP	2
WEST SOLIHULL LOCALITY SUMMARY	3
PEOPLE AND PLACE	5 -15
Total Population and Households	5
Ethnicity, Origin and Language	7
Household Composition	9
Housing and Tenure	10
Deprivation	12
Infrastructure and Assets	13
Housing Development	14
THE COMMUNITY VIEW	16 – 22
Solihull Council Place Survey	16
Solihull Community Housing STAR Survey	20
LOCAL AREA NEED	22 – 55
Employment, Worklessness and Adult Skills	22
Incomes and Poverty	25
Housing Need	29
Adult Health and Wellbeing	30
Adult Social Care	37
Social Isolation	39
Children, Young People and Education	43
Crime and Community Safety	49
	56

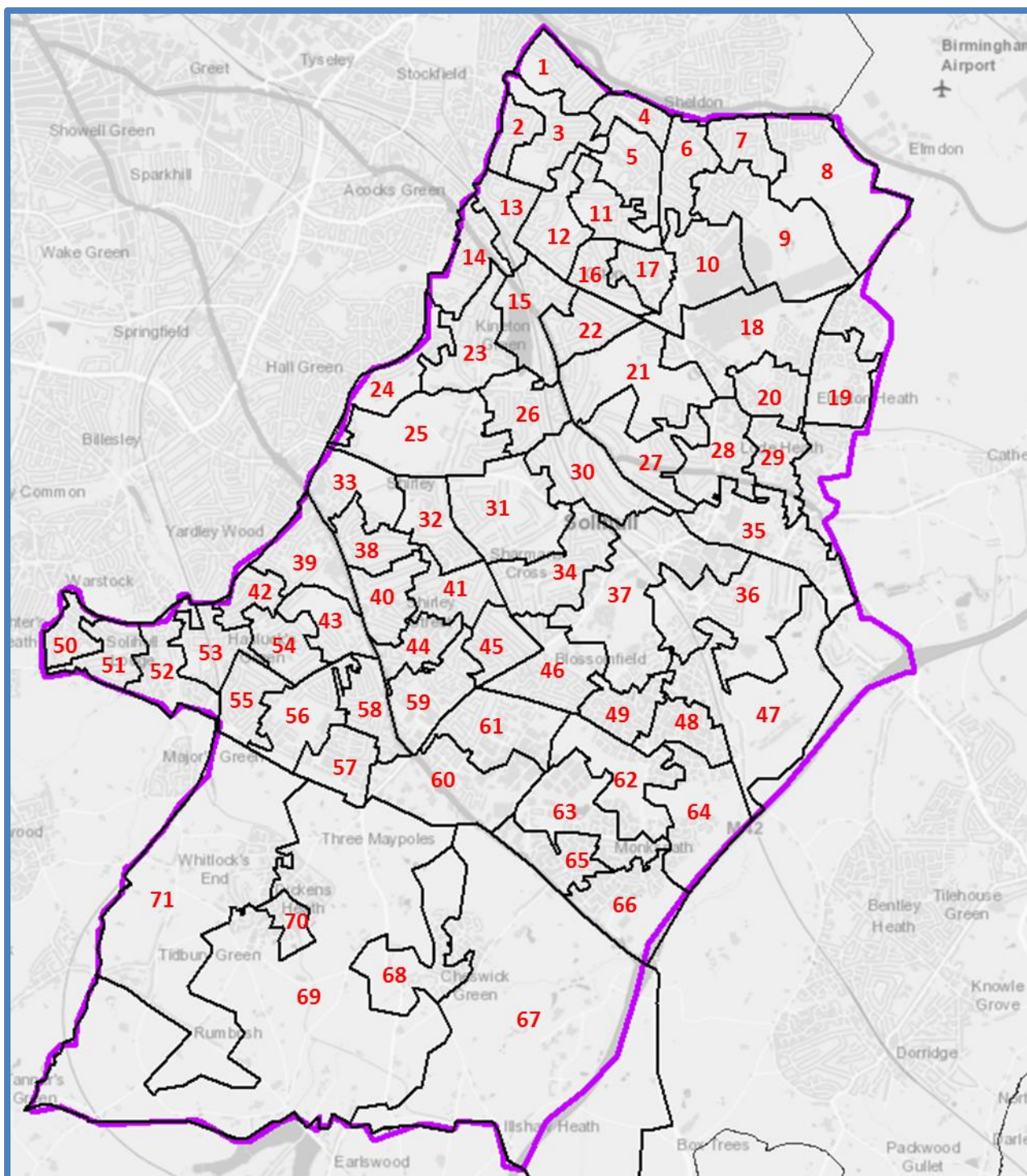
LOCALITY PROFILE FORWARD

Solihull has been divided into three localities; north, east and west (see appendix). This profile gives a snapshot of the West Solihull locality, focusing on the people, place and service need in the area. In addition it includes a summary of local residents' opinion giving an insight of what local people think of their community and West Solihull as a place to live.

The data in the Locality Profiles is based on local area ward and Census area geography, with the majority of information available at Lower Super Output Area (LSOA) neighbourhood level. The West Solihull locality includes 71 LSOAs and nine wards. The LSOAs are listed below, with a map overpage.

Map	LSOA	Map	LSOA
1	Coventry Road West	37	Solihull Tudor Grange
2	Lincoln East	38	Stratford Road North-East
3	Barn Lane	39	Stratford Road North-West
4	Coventry Road East	40	Shirley Street
5	Hobs Moat North	41	Sharmans Cross South
6	Hatchford Brook	42	Stroud Road
7	Valley	43	Shirley Park
8	Elmdon Park South	44	Stratford Road South-East
9	Elmdon Park North	45	Blossomfield North
10	Land Rover North	46	Blossomfield South
11	Hobs Moat South	47	Widney Manor
12	Jubilee	48	Hillfield East
13	Olton North	49	Hillfield West
14	Olton South	50	Solihull Lodge
15	Olton Reservoir	51	Peterbrook
16	Ulverley West	52	Mill Lodge
17	Ulverley East	53	Colebrook
18	Land Rover South	54	Burman
19	Elmdon Heath	55	Haslucks Green
20	Damsonwood North	56	Light Hall
21	World's End	57	Woodlands
22	Dovehouse	58	Stratford Road South-West
23	Langley North	59	Shirley Heath
24	Langley Hall	60	Cranmore South
25	Langley South	61	Cranmore North
26	Oak Cottage	62	Monkspath North
27	Coldlands	63	Monkspath Central
28	Hermitage	64	Monkspath East
29	Damsonwood South	65	Monkspath West
30	Broad Oaks	66	Monkspath South
31	Sharmans Cross North	67	Illshaw Heath
32	Streetsbrook	68	Cheswick Green
33	Green Hill	69	The Lanes
34	Alderbrook	70	Dickens Heath
35	Solihull Hospital	71	Tidbury Green
36	Solihull Brueton		

WEST SOLIHULL SUPER OUTPUT AREAS



WEST LOCALITY SUMMARY

Bordering Birmingham West Solihull is the largest of the three localities and for many measures average level data masks considerable variations at neighbourhood level. Deprivation, benefit dependency and service demand are significantly higher in some of the less affluent neighbourhoods of Lyndon, Olton and Shirley than elsewhere in the locality.

People and Place

- West Solihull is the largest of the three localities, 53% of the borough's population.
- With 21% aged 65 years and over, West Solihull has an older population than England. In some LSOA neighbourhoods over 5% of residents are aged 85+.
- The older population is the fastest growing section of the population with the number aged 65+ increasing by 10% in the 5 years to 2016 and those 85+ by 18%.
- Over 86% of the population are White, although the area is home to 83% of Solihull's Asian/Asian British population with this group representing more than one in five of the population in parts of Shirley, Monkspath and the Coventry Road.
- Single person households are less common than the England average, although they are increasing more than other household types in West Solihull.
- The proportion of lone parent households is below the England average but is higher in some of West Solihull's more deprived neighbourhoods.
- There is a far greater proportion of owner occupied households than across England as a whole, although in a local context socially rented households are an important feature of some neighbourhoods in Lyndon, Olton and Shirley.
- The majority of West Solihull is subject to low levels of overall deprivation, although in a local context there are relatively deprived pockets in Lyndon, Olton and Shirley. For instance Green Hill and Hobs Moat North are among the most deprived 15% neighbourhoods in England.
- There are ten housing development sites designated in the draft Local Plan in West Solihull which have an estimated capacity for just over 5,600 new housing units. This represents 64% of the borough total.

Community View

- A large majority of West Solihull respondents to the Place Survey are satisfied with the area as a place to live (86%) with responses also showing that it is a socially cohesive area.
- The level of traffic congestion, road & pavement repairs and the level of crime are most frequently cited as aspects of the local area that need improving.
- 35% of respondents from West Solihull say that they can influence decisions in their local area, compared to 57% who don't think they can. Although this is an unfavourable response it mirrors that from across Solihull as a whole.
- Just over four in ten respondents from West Solihull say that have taken part in formal volunteering for a club or organisation over the last 12 months.
- A large majority of West Solihull tenants and residents responding to Solihull Community Housing's STAR survey are satisfied with their local neighbourhood (83%).

- This is higher than the borough average, as is the proportion satisfied with the quality of their home (81%) and the proportion who think their rent provides value for money (83%).

Local Area Need

- On average West Solihull residents are far less likely than elsewhere in the borough to be dependent on an out of work benefit, housing benefit or tax credits, although levels of benefit dependency are far higher in the pockets of relative deprivation.
- In West Solihull less than 7% of children live in an out of work benefit household, although there is a considerable range at LSOA level rising to over 15% in some neighbourhoods.
- The number of households in fuel poverty is below average, although the differential between West Solihull and the England average is less than for many other poverty measures.
- Evidence suggests adults in most parts of West Solihull are more likely to live a healthy lifestyle than across England as a whole and data relating to life expectancy and premature mortality is accordingly more favourable.
- 1,100 adults in West Solihull aged 18+ receive council funded Adult Social Care support. 77% of these receive a community package such as homecare, with 18% in a care home.
- Many of the risk factors associated with social isolation such as benefit dependency are low in most parts of West Solihull and the majority respondents to the Place Survey think that their neighbours would provide practical help if they fell ill.
- In West Solihull there are relatively high concentrations of particular at risk groups such as carers and older people living alone. For instance, in many neighbourhoods more than 25% of all households are occupied by a single older person.
- Health measures for children in West Solihull, such as obesity levels are much more favourable than the England average.
- Demand for Childrens Social Care Services is lower in West Solihull than the borough average.
- The proportion of children & young people with a Special Educational Need is in-line with the borough average, although there are particular concentrations in some of the locality's more deprived neighbourhoods in Lyndon, Elmdon and Shirley.
- West Solihull's crime rate is in-line with levels recorded in similar Local Authority areas. The number of ASB incidents is well below that for North Solihull, with the number recorded falling over the year to September 2017.
- There are various crime/ASB hotspots in West Solihull, most notably Solihull Town Centre and Stratford Road in Shirley, but also including the Sears Retail Park and the Ice Skating Rink/Hobs Moat Road.
- 32% of West Solihull respondents to the Place Survey feel unsafe after dark.
- Nearly a third of West Solihull respondents think that vehicle nuisance like joyriding and abandoned cars and rubbish & litter lying around is a problem in their local area. One in five also cite vandalism, people using or dealing drugs and gangs hanging around in the streets.

PEOPLE AND PLACE

Population

	West	Solihull	England
2016 residents	113,008	211,763	55,268,067
Area (hectares)	4,972	17,829	13,027,843
Population density	22.7	11.9	4.2
2011 Households	45,538	86,056	22,063,368
Average household size	2.42	2.40	2.40
<i>Source: ONS</i>			

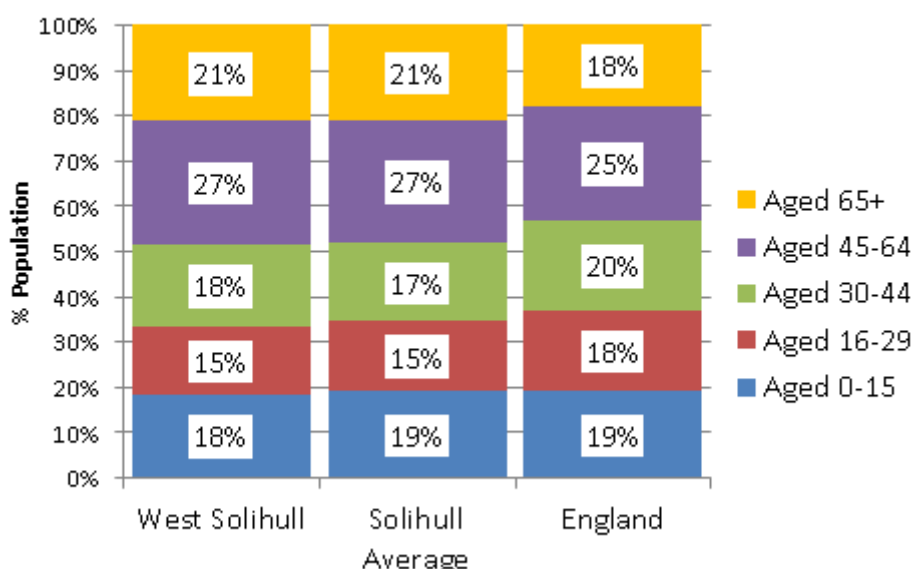
In 2016 the population of West Solihull was 113,008 (55,197 males, 57,811 females).

There are just under 23 people per hectare in West Solihull, compared to the Solihull average of 11.9 per hectare and the England average of 4.2 per hectare.

At the time of the 2011 Census there were 45,538 households in West Solihull, with an average of 2.42 people per household, compared to the Solihull and England averages of 2.40 per household.

	Count	% of Population		
	West	West	Solihull	England
Aged 0-4 years	6,237	5.5%	5.9%	6.2%
Aged 5-15 years	14,545	12.9%	13.3%	12.8%
Aged 16-29 years	16,872	14.9%	15.4%	18.0%
Aged 30-44 years	20,678	18.3%	17.3%	19.6%
Aged 45-64 years	30,665	27.1%	27.1%	25.4%
Aged 65-84 years	20,137	17.8%	17.9%	15.5%
Aged 85 years+	3,874	3.4%	3.1%	2.4%
Children (aged 0-15 years)	20,782	18.4%	19.2%	19.1%
Working Age (16-64 years)	68,215	60.4%	59.8%	63.1%
Retirement Age (65 years+)	24,011	21.2%	21.0%	17.9%
<i>Source: ONS Mid Year Population Estimates 2016</i>				

Resident Population 2016

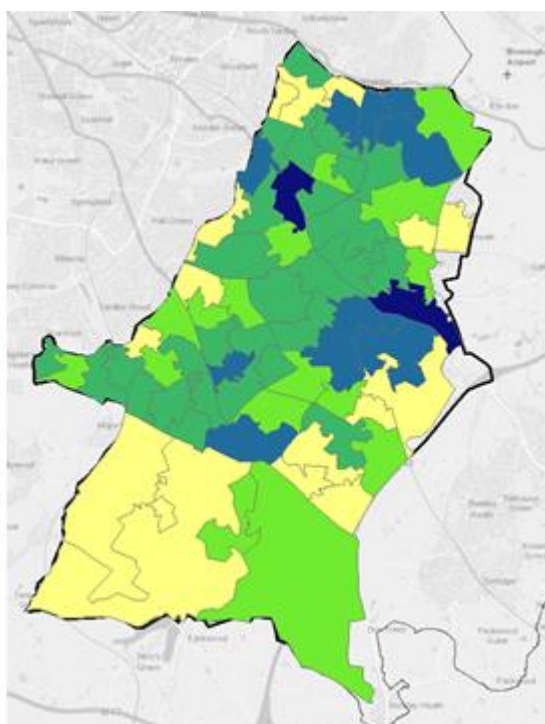
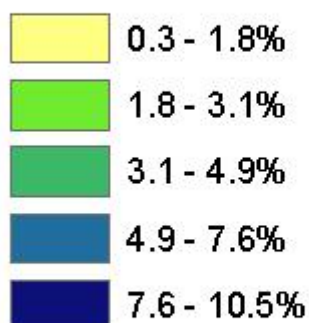


Source: ONS Mid Year Population Estimates

The West Solihull locality has a slightly older age profile than England as a whole. 21% of the population are aged 65 and over (18% for England), including nearly 3,900 aged 85+ (3.4%). As the map shows the proportion of older people aged 85+ represent more than 5% of the population in a number of LSOA neighbourhoods, particularly in St Alphege, Olton and Elmdon.

2016 Population Aged 85 and Over

% Population

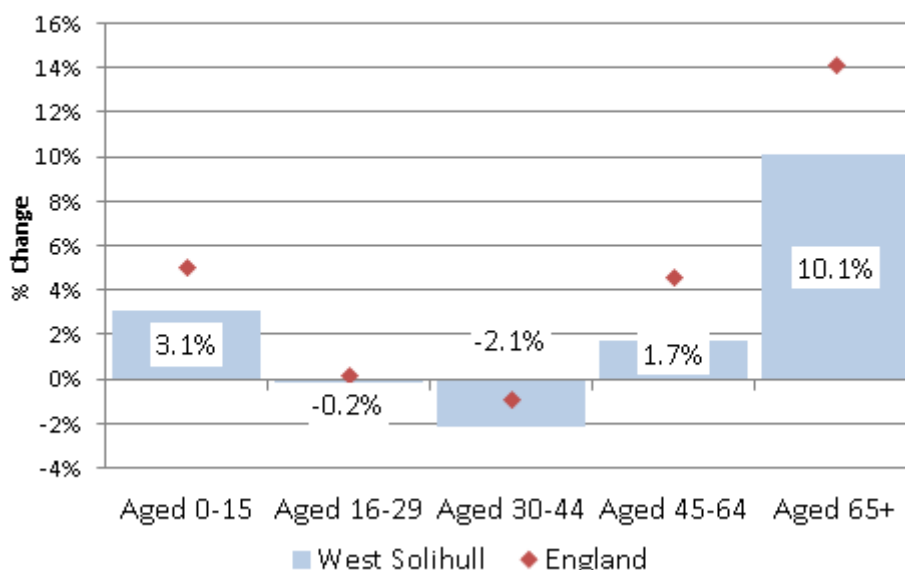


Source: ONS Population Estimates

West Solihull's population increased by 2.6% (2,867 individuals) between 2011 and 2016, compared to the England average of 4.3%.

By age group the largest increase in population in West Solihull between 2011 and 2016 was among those aged 65 and over (10.1%, 2,202 individuals). This includes an 18% increase in the 85+ population (+600 individuals). There were smaller increases in the number of children aged 0-15 years (3.1%, 623 individuals) and those aged 45-64 (1.7%, 515 individuals). This was partially offset by a fall in the number of people aged 30-44 in the West Solihull locality.

Population Change 2011-2016



Source: ONS Mid Year Population Estimates

Ethnicity, Origin, Religion and Language

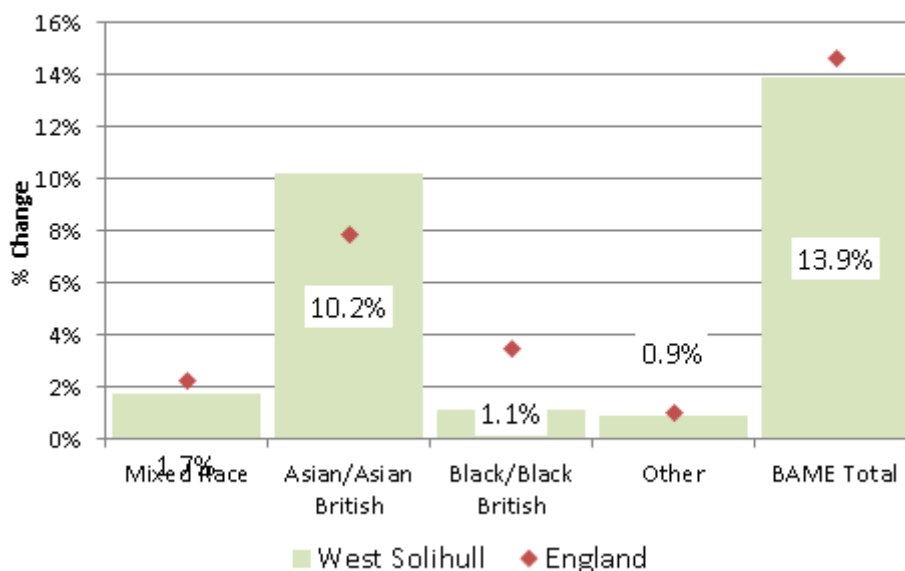
	Count	% of Population		
	West	West	Solihull	England
White Population	94,852	86.1%	89.1%	85.4%
Black & Asian Minority Ethnic Population (BAME)	15,289	13.9%	10.9%	14.6%
Born in UK	99,751	90.6%	92.6%	86.2%
Born Outside UK	10,390	9.4%	7.4%	13.8%
No Religion	20,790	20.1%	22.8%	26.7%
Christian	71,293	69.0%	70.0%	64.0%
Other Religions	11,230	10.9%	7.1%	9.4%
English Main Language (age 3+)	102,389	96.0%	97.1%	92.0%
Speak English Well (age 3+)	3,648	3.4%	2.5%	6.3%
Cannot Speak English or Speak Well (age 3+)	671	0.6%	0.5%	1.7%

Source: ONS Census 2011

West Solihull has a larger Black and Minority Asian (BAME) population than elsewhere in the borough and is in-line with the England average. 83% of those with an Asian/Asian British

background living in Solihull live in West Solihull. This group represents 10% of the area's population, compared to just under 8% of England's.

Black and Asian Minority Ethnic (BAME) Population in West Solihull 2011

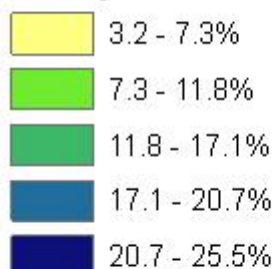


Source: ONS Mid Year Population Estimates

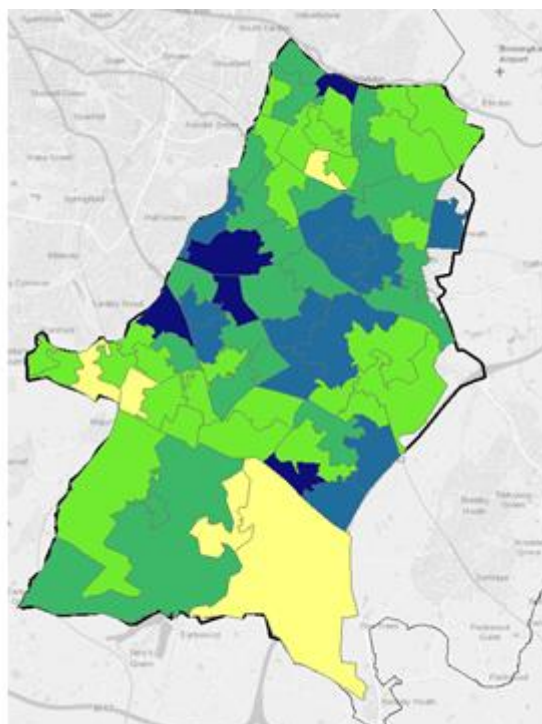
People from a BAME background represent more than one in five of the population in various neighbourhoods in Shirley, Monkspath and the Coventry Road.

Residents from a Black or Minority Ethnic Background in West Solihull

% Population



Source: ONS Census 2011



A higher proportion of West Solihull residents were born outside of the UK than elsewhere in the borough, although the number is smaller than the England average (9.4% compared to

13.8%). A large majority (69%) of the 10,390 West Solihull residents born outside of the UK arrived prior to 2001, with just 14% arriving post 2007.

Around 20% of the West Solihull population say that they have no religious affiliation. Christians are the largest group (69%), although the proportion of other religions is higher than elsewhere in the borough (11%).

96% of the West Solihull population aged 3 years and over have English as their main language, with those that cannot speak English or speak English well representing just 0.6% of the total population.

Household Composition

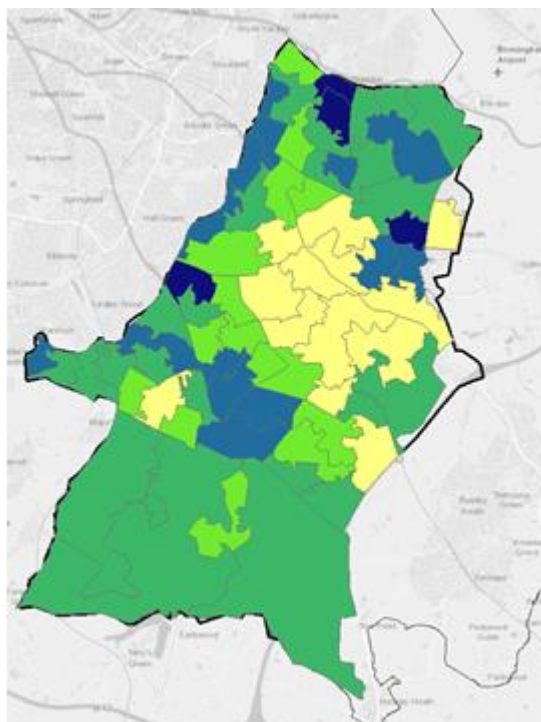
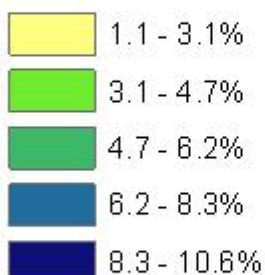
	Count	% of All Households		
	West	West	Solihull	England
One Person	13,195	29.0%	29.2%	30.2%
One Family	29,869	65.6%	65.6%	61.8%
Other Households	2,474	5.4%	5.2%	8.0%
Total Aged 65+	11,573	25.4%	24.4%	20.7%
Of which Single	6,617	14.5%	13.9%	12.4%
All with Dependent Children	13,463	29.6%	30.2%	29.1%
Of Which Lone Parent	2,395	5.3%	7.1%	7.1%
All Households	45,538			
<i>Source: ONS Census 2011</i>				

66% of West Solihull's 45,538 households are occupied by one family, which like the borough as a whole is above the England average (62%). Single person households are marginally less common in West Solihull than across England as a whole, but increased by 18% between 2001 and 2011, whereas those occupied by a family increased by just 2%.

There are 4,012 lone parent households in West Solihull of which 2,395 have dependent children, which represents 5% of all households in the locality, slightly lower than either the Solihull or England averages (both 7%). As the map below shows the proportion of lone parent households is substantially above the England average in only a few West Solihull LSOA neighbourhoods, principally Damsonwood North (11%), Hobs Moat North (11%) and Green Hill (9%).

Lone Parent Households in West Solihull

% Households



Source: ONS Census 2011

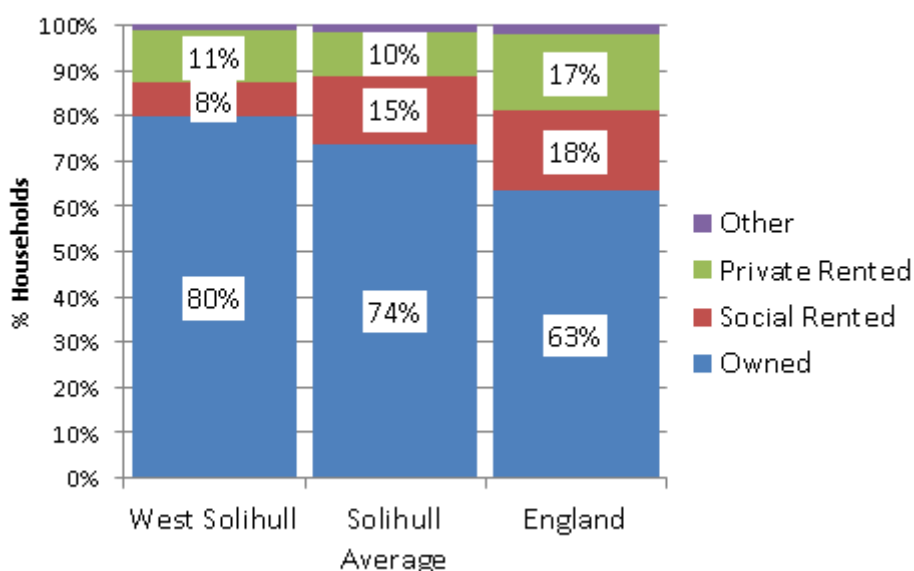
Housing and Tenure

Nearly 80% of households in the West Solihull locality are owner occupied, far in excess of the England average of 63%. West Solihull accounts for 27% of all socially rented households in Solihull.

	Count	% of Households		
	West	West	Solihull	England
Owner Occupied	36,281	79.7%	73.9%	63.3%
Shared Ownership	270	0.6%	0.6%	0.8%
Socially Rented	3,431	7.5%	14.9%	17.7%
Privately Rented	5,221	11.5%	9.9%	16.8%
Living Rent Free	335	0.7%	0.7%	1.3%

Source: ONS Census 2011

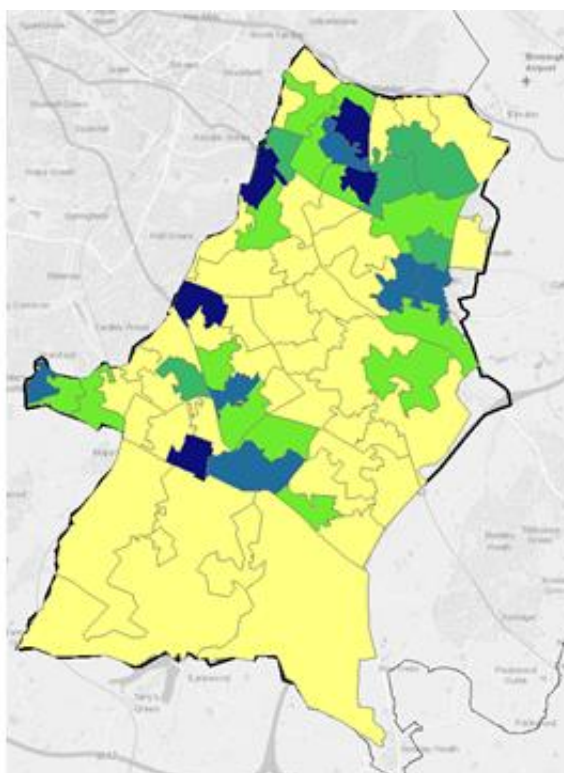
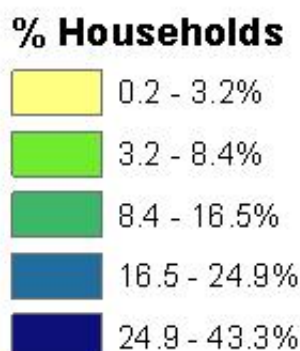
Household Tenure 2011



Source: ONS Census

The proportion of households that are socially rented across West Solihull as a whole is below the England average (7.5% compared to 18%), although there are LSOA neighbourhoods with high concentrations. Specific hotspots include Ulverley East (43% of all households), Green Hill (41%), Hobs Moat North (34%), Olton South (33%) and Woodlands (29%).

Socially Rented Households in West Solihull



Source: ONS Census 2011

The majority of households in the West Solihull locality live in a house or bungalow (84%), with just 16% living in a flat.

	Count	% of Households		
	West	West	Solihull	England
Whole House or Bungalow	39,162	83.6%	81.6%	77.5%
Flat, Maisonette or Apartment	7,663	16.4%	18.2%	22.1%
Other	19	0.0%	0.2%	0.4%

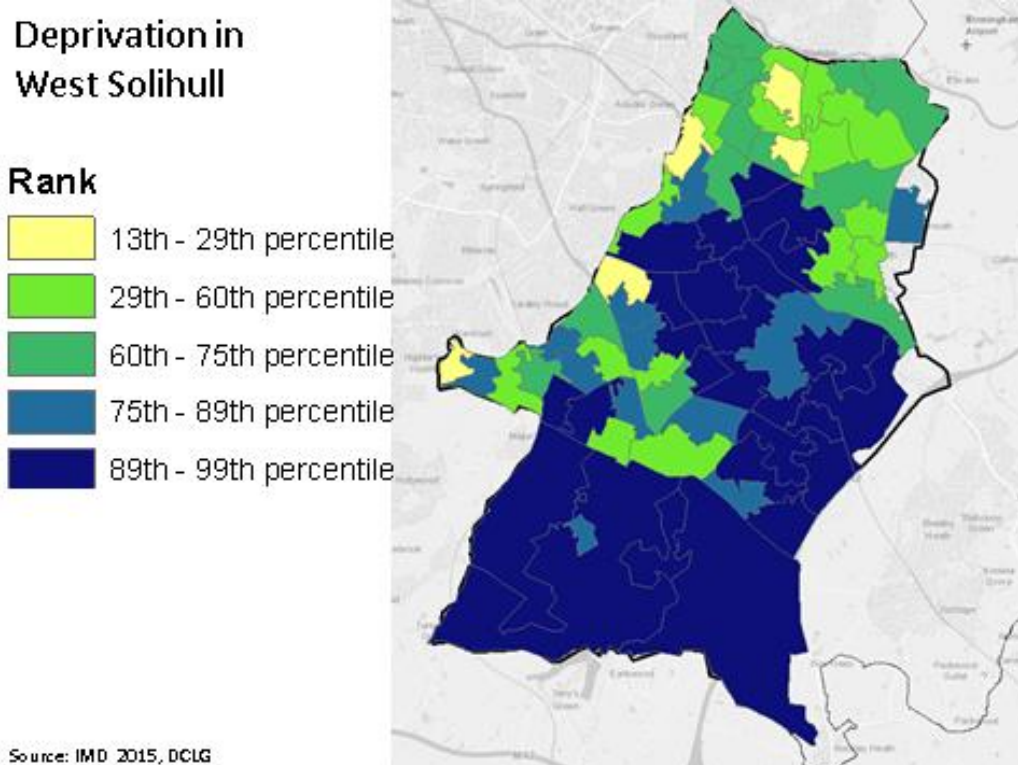
Source: ONS Census 2011

Deprivation

The Index of Multiple Deprivation (IMD) combines a number of income, social and housing measures into a single deprivation score for individual LSOA neighbourhood in England. In this way the IMD ranks deprivation in each neighbourhood relative to all others in England.

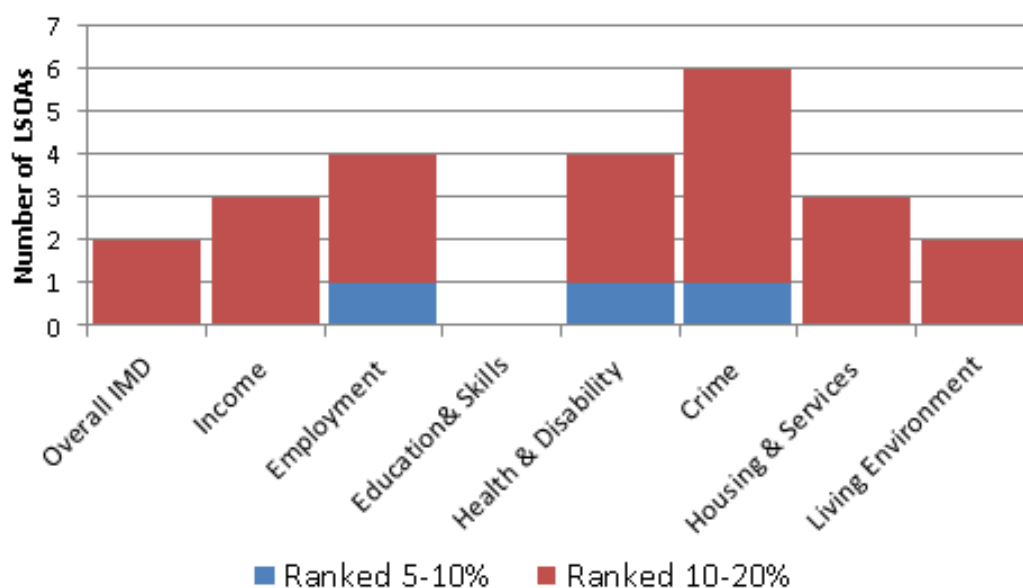
Aside from a few pockets, West Solihull is subject to relatively low levels of deprivation. The average percentile rank of the 71 LSOAs in the West Solihull locality is 74 compared to 25.2 in the North locality and 86.3 in the East of Solihull. In total 39 of the 71 LSOAs in West Solihull are among the least deprived 25% of neighbourhoods in England, with 26 of these in the top 10%. At the other end of the spectrum four LSOAs are amongst the most deprived 25% in the country.

In a local context the most deprived LSOA neighbourhoods in West Solihull are Green Hill (13th percentile), Hobs Moat North (13th percentile), Olton South (22nd percentile), Ulverley East (24th percentile) and Solihull Lodge (29th percentile).



As the chart below shows 5 of West Solihull’s 71 LSOAs are ranked among the most 20% deprived neighbourhoods in England from a crime and order perspective (including one in the most deprived 10%). There are no North Solihull LSOAs ranked in the bottom 20% of neighbourhoods for Education & Skills and relatively few from a Living Environment perspective.

Neighbourhoods in West Solihull in Most Deprived 20% in England



Source: 2015 Index of Multiple Deprivation, DCLG

Infrastructure and Community Assets

The West Solihull locality area contains the strategic transport infrastructure of the A34 Stratford Road and the A41 Warwick and Road; principal routes into Birmingham, and two railway lines, with stations at Shirley, Olton, Solihull, Widney Manor and Whitlocks End. Excellent connectivity to strategic road networks has resulted in traffic congestion at key destinations such as Solihull and Shirley Town Centres.

At 1.42 per household, West Solihull has higher levels of car ownership than the England average, with just 16% of households having no car or van compared to 26% for England. 78% of West Solihull residents who travel to work do so by private vehicle, with just 13% using public transport.

The table below summarises the range of community facilities and assets located in the West Solihull locality. A full list is available in the separate asset register.

	Type of Asset	Number
Education	Infant/Primary	35
	Secondary	7
	Special	2
	Private	6
	Further Education College	2
Health & Care	GP Surgery	17
	Pharmacy	26
	Older People Residential & Nursing	19
	Older People Sheltered Housing/Extra Care	35
	Residential for Adults with Learning Disabilities	12
Community Facilities	Libraries	5
	Community Centres, Halls & Clubs	65
	Sports & Leisure Facilities	11
	Places of Worship	37
Parks & Nature Reserves	Green Flag Parks	8
	Other Parks	2
	Local Nature Reserve	4

Housing Development

The Solihull Local Plan (SLP) was adopted in December 2013 and covers the period 2011 to 2028. However, in the wake of a legal challenge, housing shortfalls in the wider region and the need to deliver HS2 it was deemed necessary for an early review of this plan.

This review has led to the development of a draft local plan with additional land allocated for housing development¹.

There are three housing sites in West Solihull allocated in the 2013 SLP that have not yet started development and have been retained in the updated draft local plan. These sites in Solihull town centre, Shirley and Blythe have the potential to deliver 2,185 new housing units.

Existing Housing Allocations (Retained from 2013 SLP)		
Site	Area (hectares)	Capacity (Units)
Solihull Town centre	-	861
Powergen - Shirley	3.84	374
Blythe Valley Park	12.25	950

¹ The Review process is ongoing with public consultation on the proposals running from December 2016 to February 2017. The final housing allocations are dependent on this consultation process.

West Solihull Total	-	2,185
<i>Source: SMBC Draft Local Plan</i>		

There are seven new sites allocated in West Solihull in the updated draft local plan with a potential to deliver 3,450 new housing units on a phased basis.

New Housing Allocations (Proposed as part of Review)					
Site	Area (ha)	Capacity (Units)	Delivery Years		
			Short 1-5	Medium 6-10	Long 11-15
West of Dickens Heath (off Tythe Barn Lane, Tilehouse Lane & Birchy Leasowes Lane)	41	700	Yes	Yes	Yes
TRW/The Green (Stratford Rd) - Shirley	19	400	Yes	Yes	
South of Dog Kennel Lane - Shirley	42	850	Yes	Yes	Yes
South of Shirley (between Whitlocks End Farm & Dickens Heath Rd)	30	600	Yes	Yes	Yes
Sharmans Cross Rd - Solihull	3	100	Yes		
East of Solihull (between Lugtrout Lane & Hampton Lane)	39	650		Yes	Yes
Moat Lane / Vulcan Rd - Solihull	5	150			Yes
West Solihull Total	179	3,450			
<i>Source: SMBC Draft Local Plan</i>					

Taken together the retained housing development sites from the 2013 SLP and the new allocations make provision for 5,635 housing units in West Solihull. This is 64% of the borough's total and equates to 49.9 units for each 1,000 residents.

	Housing Allocations in Draft Local Plan				
	Existing Allocations	New Allocations	Total Units	% Solihull Total	Units Per 1,000 Population
North	280	350	630	7%	10.7
East	175	2,350	2,525	29%	63.4
West	2,185	3,450	5,635	64%	49.9
Solihull	2,640	6,150	8,790		41.5
<i>Source: SMBC Draft Local Plan</i>					

COMMUNITY VIEWS

Place Survey

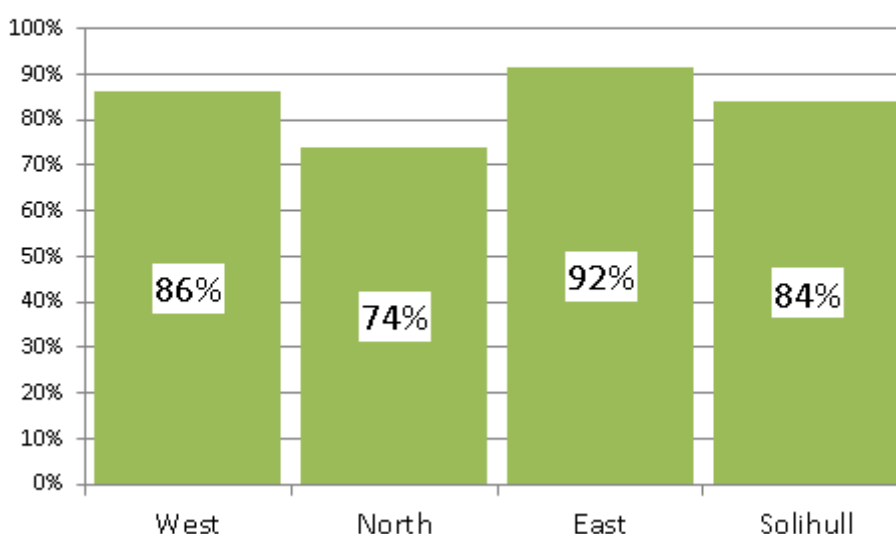
In 2018 the Solihull Place Survey asked 700 Solihull residents a series of questions relating to their opinions about their local area as a place to live, local services and their own participation in community life. There were 377 responses from residents living in the West Solihull locality area.

86% of respondents in West Solihull said that they were satisfied with their local area as a place to live (40% very satisfied, 46% fairly satisfied) compared to 10% who were dissatisfied.

	Overall, how satisfied or dissatisfied are you with your local area as a place to live?		
	West Total	% Respondents	
		West	Solihull Average
Very satisfied	152	40%	39%
Fairly satisfied	173	46%	44%
Neither satisfied nor dissatisfied	15	4%	5%
Fairly dissatisfied	25	7%	8%
Very dissatisfied	11	3%	2%
Total	377		

Source: SMBC Place Survey 2018

Respondents Satisfied with their Local Area as a Place to Live



Source: SMBC Place Survey 2018

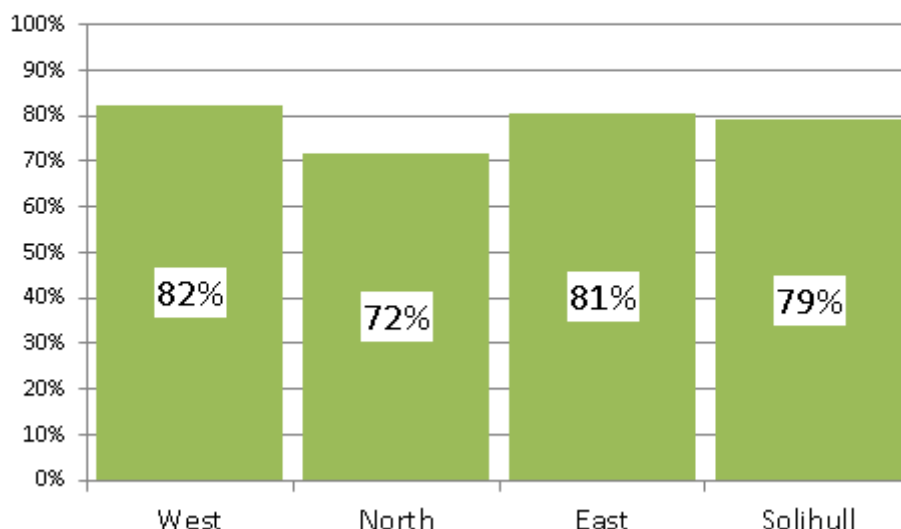
Respondents to the Place Survey were asked which of 12 elements of their local area and community most needed improving. As the table below shows 31% of respondents in West

Solihull said that the level of traffic congestion definitely needed improving. More than a quarter of respondents also cited the road & pavement repairs and the level of crime.

Definitely Needs Improving in Local Area				
Aspect of Local Area	% Respondents		Rank out of 12	
	West Solihull	Solihull Average	West Solihull	Solihull Average
The level of traffic congestion	31%	30%	1	2
Road and pavement repairs	30%	30%	2	1
The level of crime	28%	27%	3	3
Things for young people to do - including those young people with disabilities	16%	21%	4	4
Things for older people to do - including those older people with a disability	11%	16%	5	5
Fast Broadband/Internet Connectivity	9%	11%	6	8
Support in the community for people who require care to live independently	9%	13%	7	7
Support for people who are caring for others	9%	14%	8	6
Reliable local Public Transport	8%	8%	9	9
Local places to work	8%	7%	10	11
Good local facilities (Schools, Doctors, Dentists, Shops, Sports & Leisure facilities)	6%	7%	11	10
Attractive environment	5%	5%	12	12
<i>Source: SMBC Place Survey 2018</i>				

Like Solihull as a whole a large majority of respondents from West Solihull say that people from a different background in their local area get on well together (82% compared to 79% for the Solihull average).

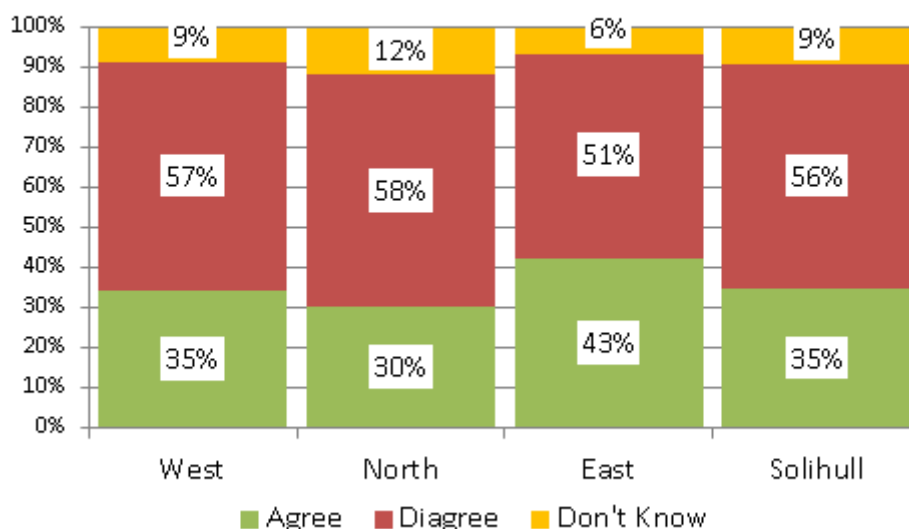
Respondents Agree that People from a Different Background Get on Well Together in their Local Area



Source: SMBCPlace Survey 2018

35% of respondents from West Solihull say that they can influence decisions in their local area, compared to 57% who don't think they can. Although this is an unfavourable response it mirrors that from across Solihull as a whole.

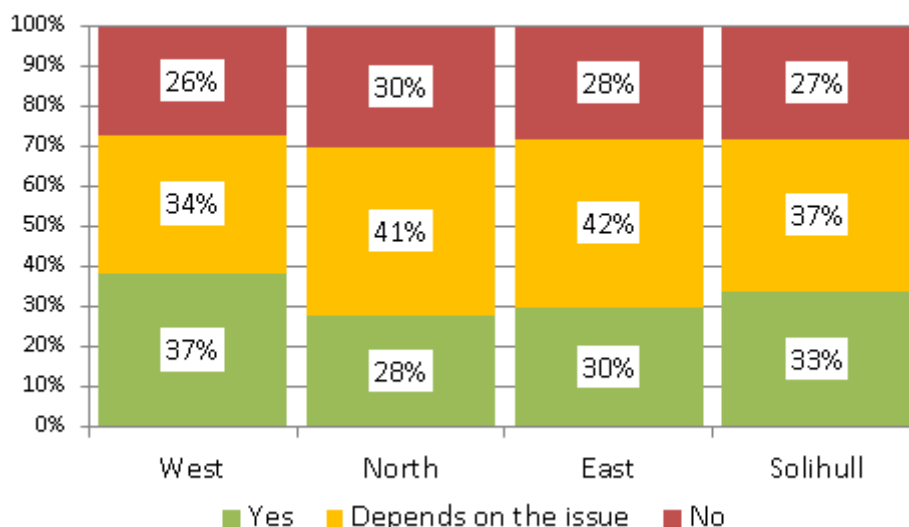
Do you agree or disagree that you can influence decisions affecting your local area?



Source: SMBCPlace Survey 2018

37% of West Solihull respondents say that they would definitely like to be more involved in the decision making process, with a further 34% saying that it depends on the issue. This is slightly more positive than other areas of Solihull.

Would you like to be more involved in decisions that affect your local area?



Source: SMBCPlace Survey 2018

Just over four in ten respondents from West Solihull say that have taken part in formal volunteering for a club or organisation over the last 12 months (27% once a month, 15% less often), compared to 57% who haven't volunteered. This is a lower participation rate than the East Solihull locality (58%), but above that for North Solihull (21%).

It should be noted that more respondents say that they have given informal unpaid help such as helping neighbours or litter picking in the last 12 months (68%).

Respondents Who Have Taken Part in Formal Volunteering Over the Last 12 Months



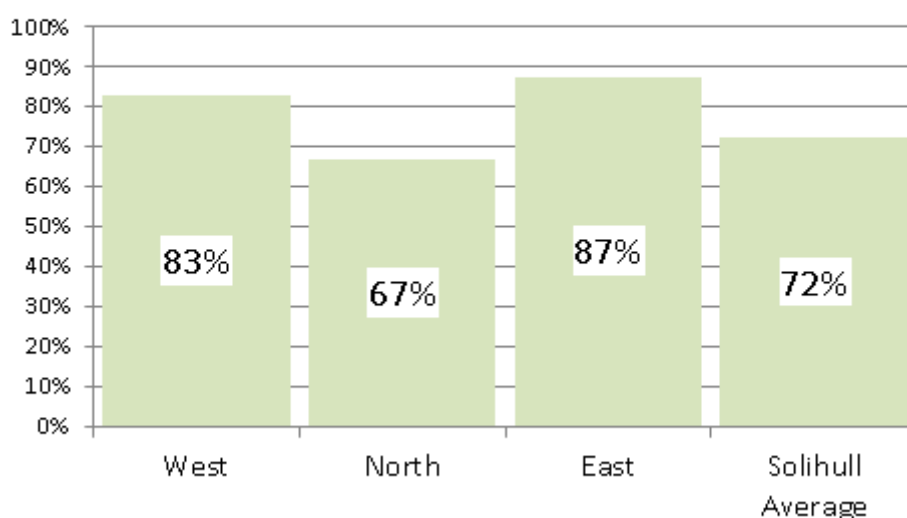
Source: SMBCPlace Survey 2018

Solihull Community Housing Survey of Tenants and Residents (STAR)

Solihull Community Housing’s STAR survey 2017 measures tenants’ satisfaction with their local neighbourhood, their home and SCH services. Across Solihull as a whole there were a total of 1,299 responses equating to a response rate of 13%.

In West Solihull 83% of SCH tenants who responded to the STAR survey are satisfied with their local neighbourhood as a place to live, compared to just 14% who are dissatisfied. This represents a more favourable response than the Solihull average.

Respondents Satisfied with their Local Neighbourhood as a Place to Live



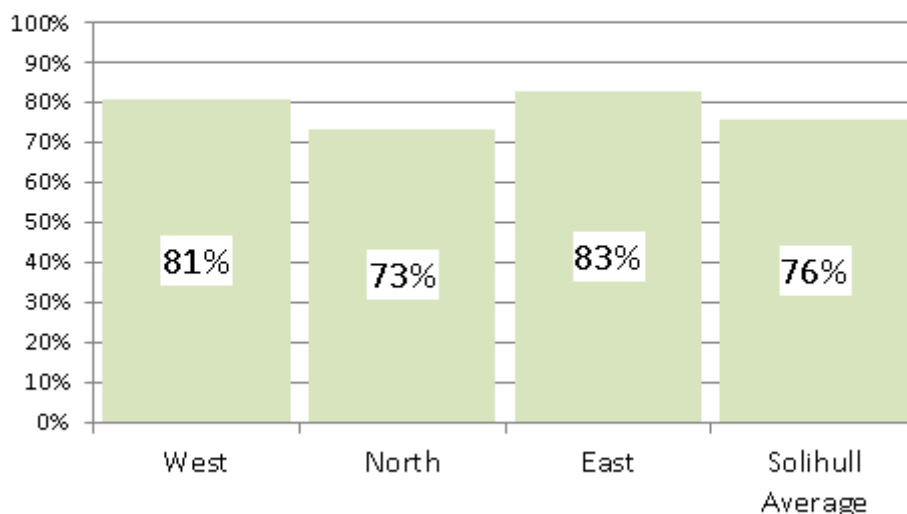
Source: SCH STAR Survey 2017

	Overall, how satisfied or dissatisfied are you with your local neighbourhood as a place to live?		
	West Total	% Respondents	
		West	Solihull Average
Very satisfied	138	53%	35%
Fairly satisfied	79	30%	37%
Neither satisfied nor dissatisfied	7	3%	8%
Fairly dissatisfied	25	10%	11%
Very dissatisfied	12	5%	8%
Total	261		

Source: SCH STAR Survey 2017

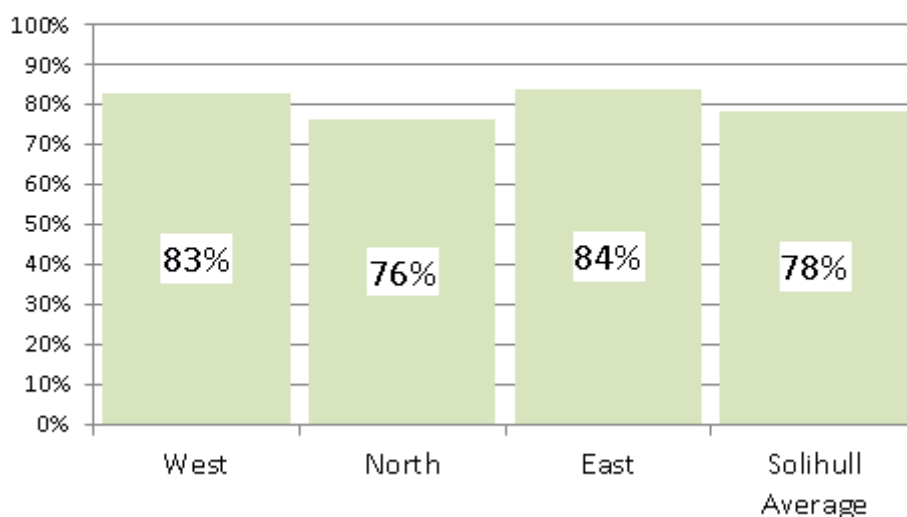
West Solihull tenants and residents are also more satisfied with the quality of quality of their home than the borough average and are more likely to say that they think that their rent provides value for money.

Respondents Satisfied with the Quality of Their Home



Source: SCH STAR Survey 2017

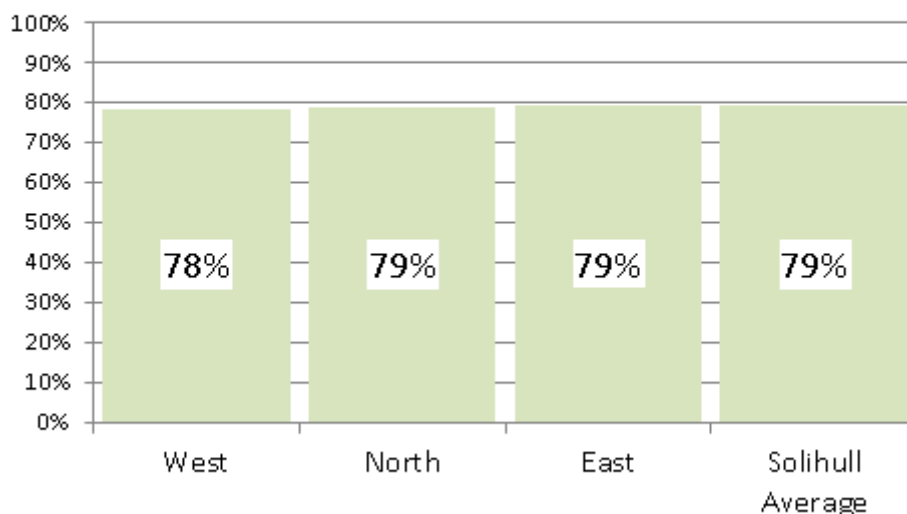
Respondents Satisfied That Their Rent Provides Value for Money



Source: SCH STAR Survey 2017

A large majority of West Solihull respondents to the STAR survey say that they are satisfied with the overall service provided by SCH (78%), with 13% dissatisfied. Responses to this question in West Solihull are in-line with other areas of the borough.

Respondents Satisfied with the Service Provided by Solihull Community Housing



Source: SCH STAR Survey 2017

LOCAL AREA NEED

Employment, Worklessness and Adult Skills

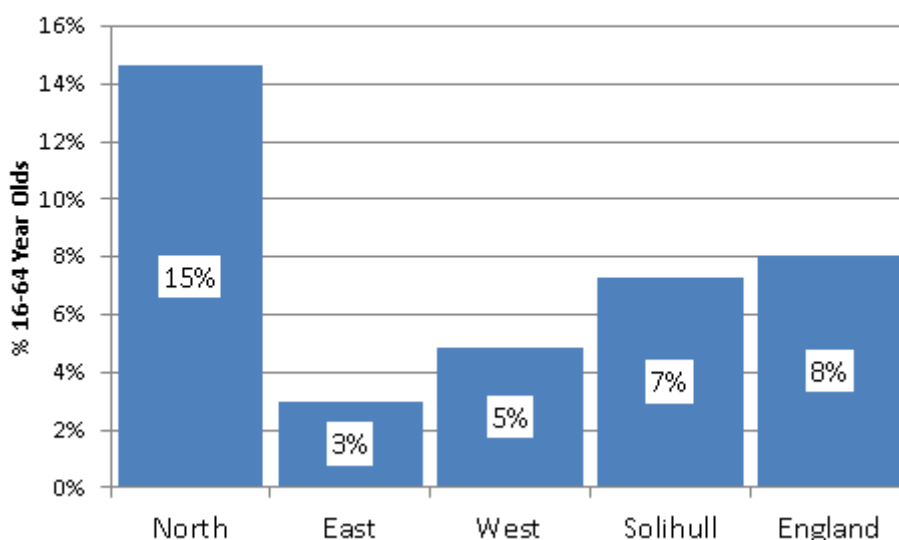
At the time of the Census the working age employment rate in West Solihull was higher than elsewhere in the borough and the England average. Proportionally fewer people were both unemployed and economically inactive.

	West Solihull	% 16-64 Population		
		West Solihull	Solihull Average	England
Employed	52,298	77%	74%	71%
Unemployed	3,016	4%	6%	6%
Economically Inactive	12,859	19%	21%	23%

Source: ONS Census 2011

In November 2016 3,290 individuals in West Solihull were claiming an out of work benefit, equating to a worklessness rate of just 5%. This is far lower than the England average (8.1%).

Out of Work Benefit Claimants



Source: DWP

75% of all out of work benefit claimants in West Solihull receive employment support Allowance (ESA) or Incapacity Benefits with 3.6% of the working age population claiming compared to the Solihull and England averages of 5% and 5.8% respectively. As with the rest of the borough and England as a whole around a half of all ESA claimants are unable to work because of mental health problems or a behavioural disorder.

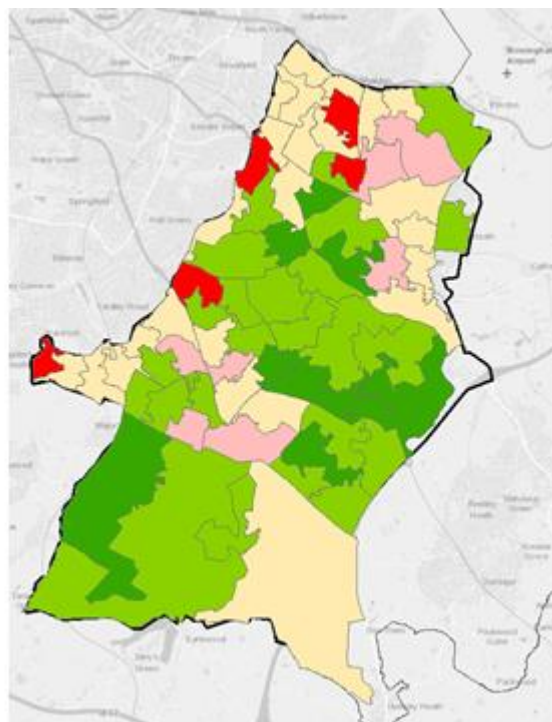
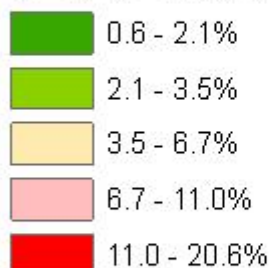
	West Claimants	% 16-64 Year Olds		
		West	Solihull Average	England
ESA & incapacity benefits	2,460	3.6%	5.0%	5.8%
Job seekers allowance	385	0.6%	1.1%	1.1%
Lone parents on Income Support	370	0.5%	1.1%	1.0%
Others on income related benefits	75	0.1%	0.1%	0.2%
All Out of Work Benefits	3,290	4.8%	7.3%	8.1%

Source: DWP

The map below shows that while on average just 4.8% of the working age population in West Solihull claim an out of work benefit that figure rises to well above the England average in a number of the more deprived neighbourhoods in the locality. Particularly high rates of worklessness are evident in the Green Hill (21%), Olton South (17%), Ulverley East (15%), Hobs Moat North (14%) and Solihull Lodge (14%) LSOAs.

16-64 Year Olds Claiming an Out of Work Benefit

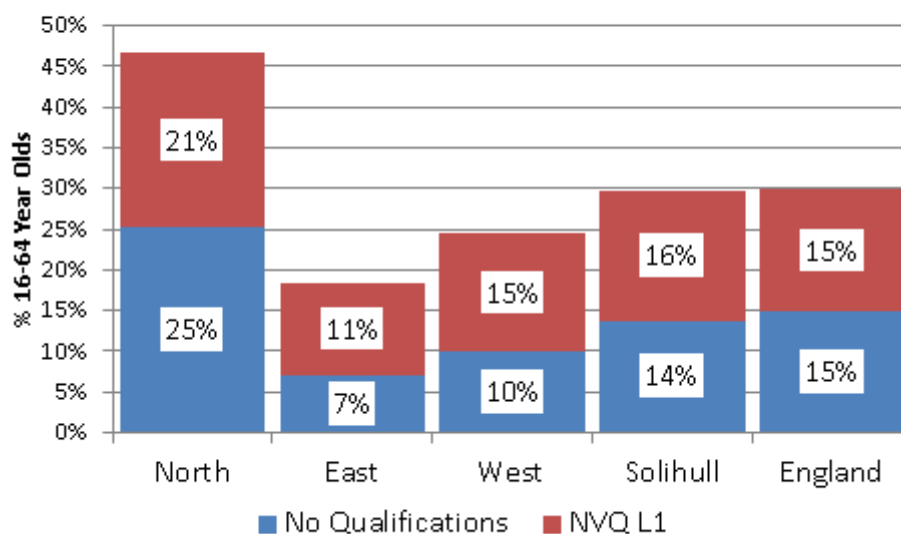
% 16-64 Population



Source: DWP

Alongside health, qualification levels are one of the main barriers to employment. 10% of working age residents in West Solihull have no qualifications, with a further 15% qualified to just NVQ level 1. At the other end of the spectrum 36% have NVQ level 4+ qualifications (degree level and above) compared to the Solihull and England averages of 32% and 30% respectively.

Working Age Residents with Low Qualifications Levels



Source: DNS Census2011

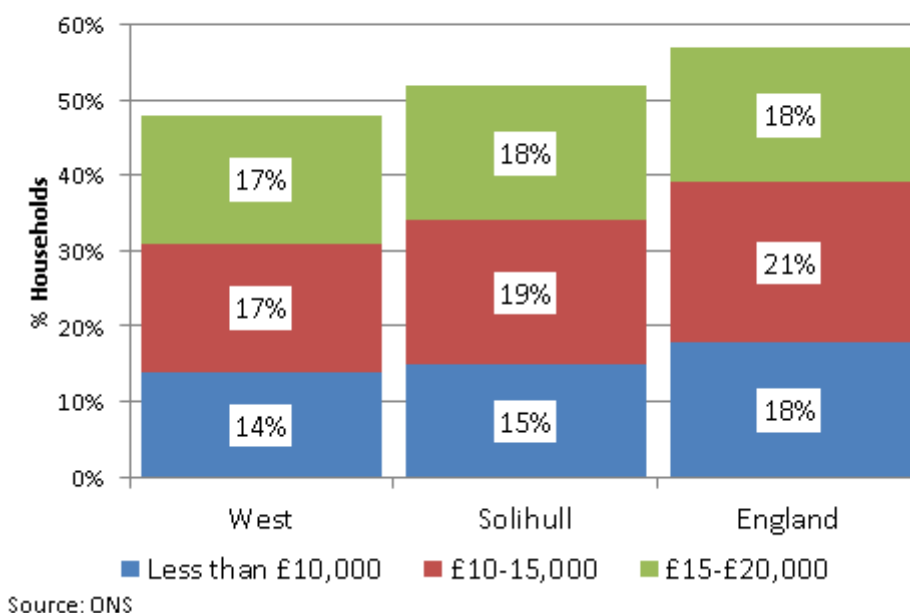
The relatively high skills base is reflected in below average levels of worklessness whilst also dictating the type of employment undertaken by many of those in work. This is shown

by a comparison of the occupations of those in employment in West Solihull compared to the rest of the borough and national average. For instance, just 12% of West Solihull residents work in process or elementary occupations with 35% working in managerial or professional roles. Across England as a whole the proportions are 18% process & elementary and 28% managerial & professional.

Incomes and Poverty

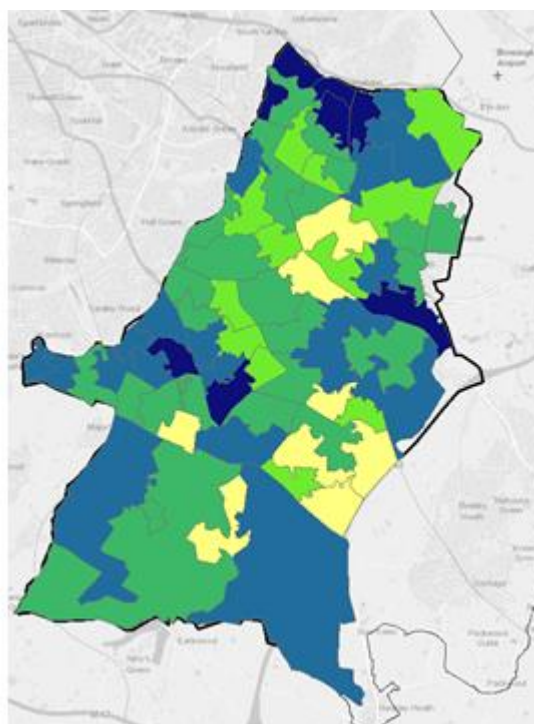
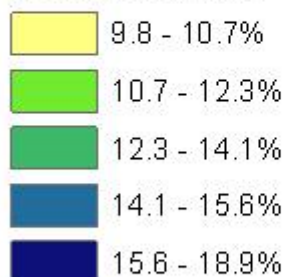
48% of households in the West Solihull locality have an annual income of less than £20,000 compared with the Solihull and England averages of 52% and 57% respectively. The proportion on the lowest levels of annual incomes (£10,000 or less) are also below average (14% compared to 18% for England).

Annual Household Incomes



Households with Annual Incomes of £10,000 or Less in West Solihull

% Households



Source: ONS

At the end of 2017 DWP statistics show that 4,069 individuals in West Solihull were claiming housing benefit. This represents 4.5% of the 18+ population, compared with the England average of 8.5%.

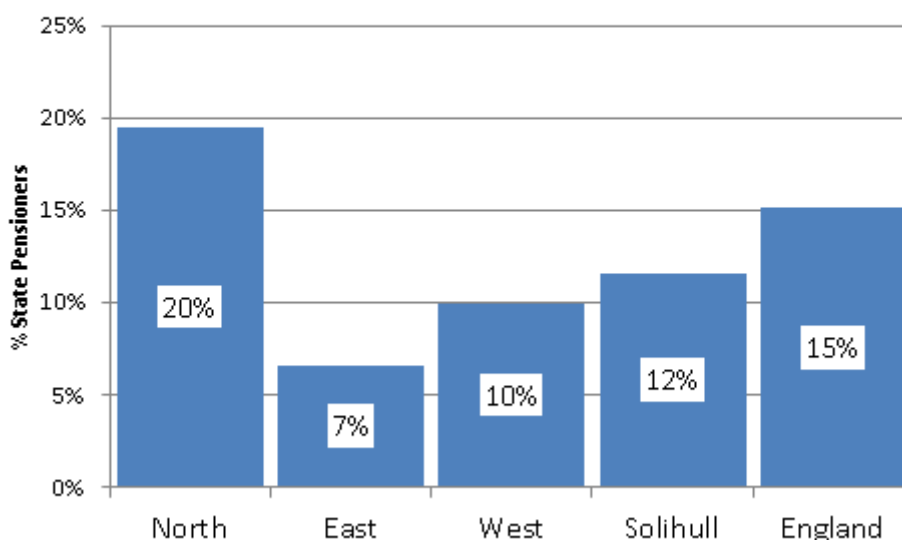
19% of claimants in West Solihull are under the age of 35, with 34% aged 65 and over, including over 1,087 claimants aged over 70 (27% of total). The housing benefit claimant rate is well below the England average for all age groups in West Solihull.

Age	Housing Benefit Claimants by Age Group				
	West Claimants	% of All Claimants		Rate (% Population)	
		West	England	West	England
Under 25	118	3%	4%	2%	3%
25 to 34	665	16%	16%	5%	8%
35 to 44	665	16%	18%	5%	10%
45 to 54	691	17%	18%	4%	9%
55 to 64	529	13%	14%	4%	8%
65+	1,401	34%	29%	6%	11%
Total	4,069			5%	8%

Source DWP

At the end of 2017 there were 2,510 older people in the West Solihull locality claiming pension credits. This represents 10.0% of all state pensioners in the area, a much smaller proportion than the England average (15.1%).

Pensioners Claiming Pension Credits



Source: DWP

The latest data shows that in May 2016 there were 1,365 children aged 0-15 living in in out of work benefit household in West Solihull with a further 220 young aged 16-18 doing so. The proportion of children and young people living in these out of work benefit households is proportionally much lower in West Solihull than across England as a whole.

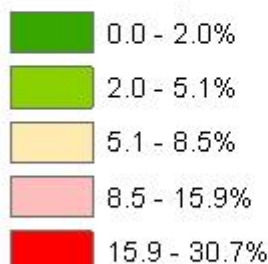
	% Children Living in an Out of Work Benefit Household	
	Aged 0-15	Aged 0-18
North Solihull	28.0%	26.1%
West Solihull	6.6%	6.4%
East Solihull	4.4%	4.3%
Solihull Average	12.7%	11.9%
England	14.0%	13.4%

Source: DWP May 2016

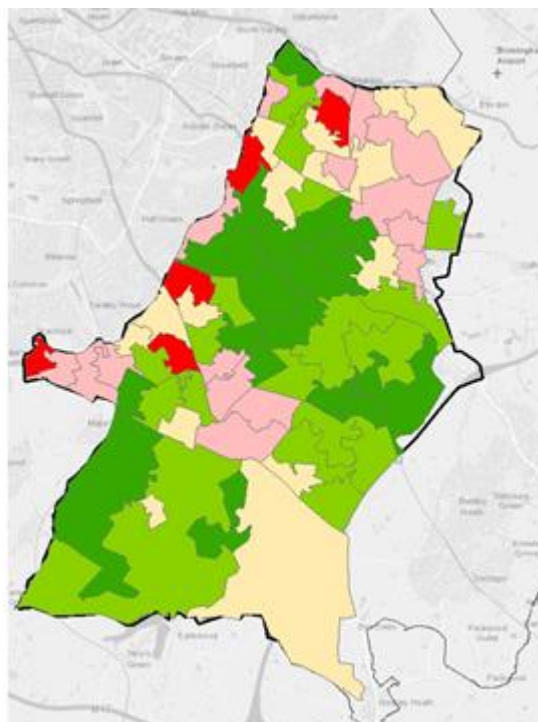
Child poverty in West Solihull is low, with just under 7% of children aged 0-15 living in out of work benefit household. However, there is a considerably range at LSOA neighbourhood level, with particular hotspots at Hobs Moat North (31%), Shirley Park (22%), Green Hill (20%), Solihull Lodge (19%) and Olton South (18%).

**Children Aged 0-15
Years Living in an
Out of Work
Benefit Household**

% 0-15 Population



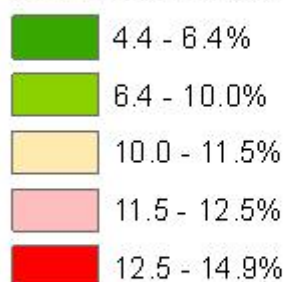
Source: DWP



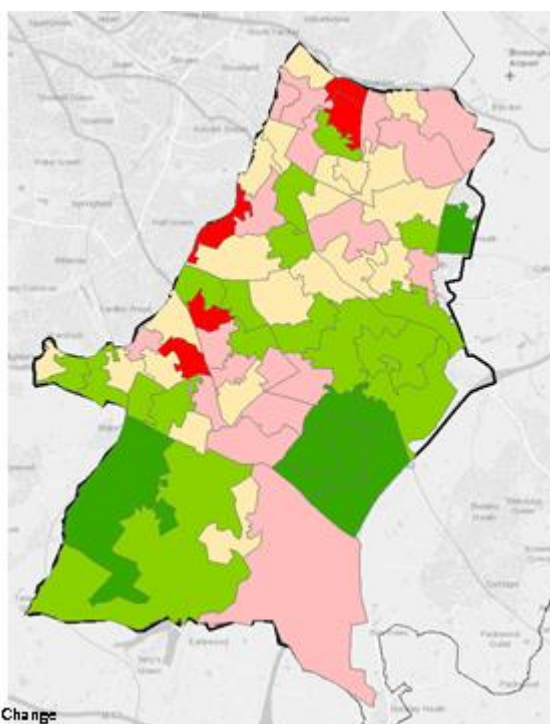
The latest data shows that 4,715 households in West Solihull are classified as being in fuel poverty. At 10.2% of all households in the locality this is below both the England average (11%) average. However, it should be noted that unlike other measures relating to income deprivation and poverty, the gap between West Solihull and the rest of the country is less pronounced and at an individual LSOA neighbourhood level there are significant local hotspots such as Shirley Park (15%), Coventry Road East (13%), Stratford Road North East (13%) and Hobs Moat North (13%).

**Households in Fuel
Poverty**

% Households



Source: Department for Business, Energy & Climate Change



Housing Need

At the time of the 2011 Census 1,750 households in the West Solihull locality were had at least one room too few for the number of people in that household. On this basis 3.8% of households in West Solihull were classified as overcrowded, much fewer than the England average (8.7%). On a similar basis 2.1% of households in West Solihull had at least one bedroom too few, again well below the England average (4.6%).

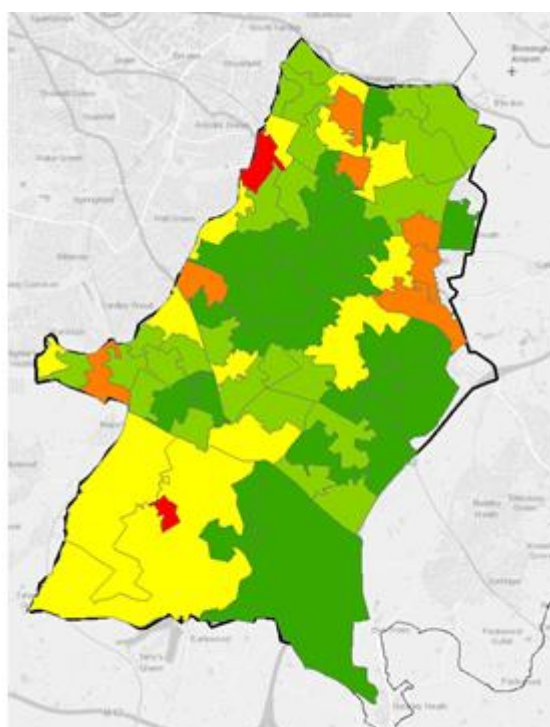
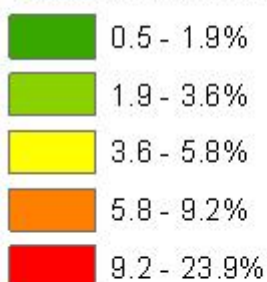
	West Households	% Overcrowded Households		
		West	Solihull Average	England
At least one room too few	1,750	3.8%	4.5%	8.7%
At least one bedroom too few	934	2.1%	2.6%	4.6%

Source: ONS Census 2011

At an LSOA neighbourhood level Dickens Heath stands out with 24% of households having one room too few. Aside from that anomaly, Olton South (17.3%) and Green Hill (9.2%) are the only other neighbourhoods where overcrowding is more common than England as a whole.

Households with at Least One Room Too Few (Overcrowded)

% Households



Source: ONS Census 2011

A total of 1,678 households with a West Solihull address are on the Housing Register and classified as having a housing need (Bands A-E)². This represents 3.7% of all households in West Solihull. The West Solihull locality accounts for 33% of all Solihull households on the Housing Register.

² Includes only those with an active status with a local address (excludes entries on Housing Register that give a care of address in Solihull)

There are 240 West Solihull households classified as being in urgent housing need (Bands A-B). This represents 0.5% of all households in the locality.

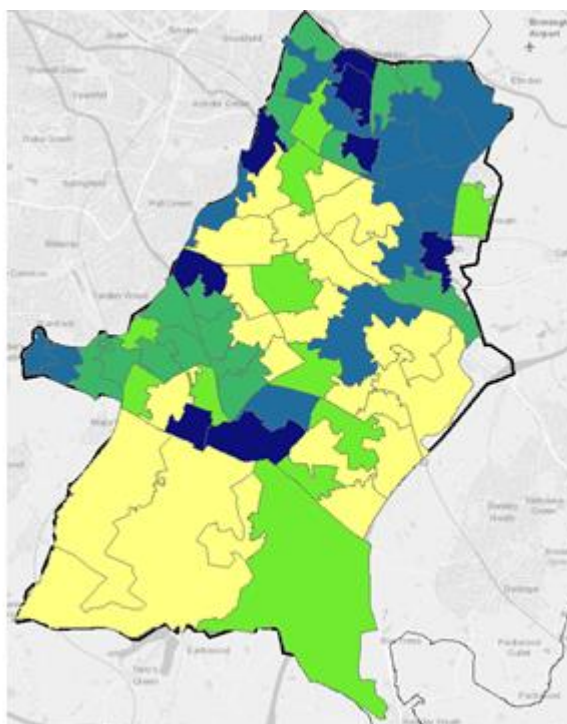
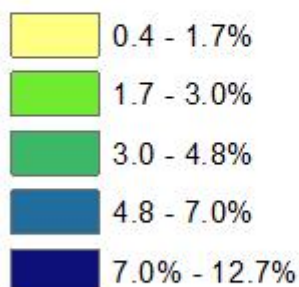
Bands	West Solihull Households	% of all Households			
		West	East	North	Solihull Average
A	22	0.0%	0.0%	0.3%	0.1%
B	218	0.5%	0.2%	2.0%	0.9%
C2	76	0.2%	0.1%	1.0%	0.4%
C3	5	0.0%	0.0%	0.1%	0.0%
D	679	1.5%	0.6%	4.4%	2.2%
E	678	1.5%	0.9%	5.2%	2.4%
All Bands A-E	1,678	3.7%	1.8%	12.9%	6.0%
All Bands A-B	240	0.5%	0.3%	2.2%	1.0%

Source: SMBC

The proportion of households with a housing need (bands A-E) is low across West Solihull as a whole, although in a local context there are relative hotspots in the Green Hill (13%), Damsonwood South (10%), Cranmore South (10%), Olton South (9%) and Hobs Moat North (9%) LSOA neighbourhoods.

Households on Housing Register with a Housing Need (Bands A-E)

% Households



Source: SMBC

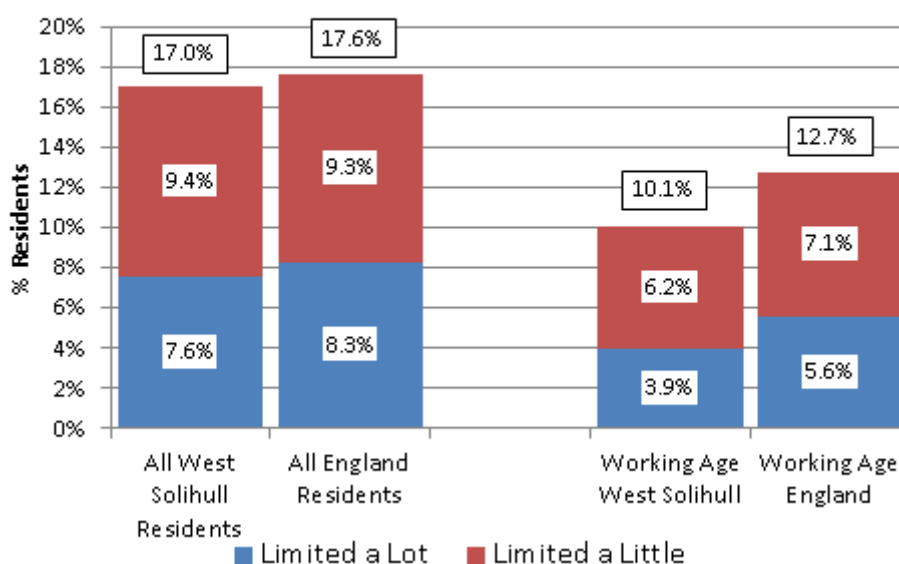
Adult Health and Wellbeing

17% of the West Solihull population say that their day to day activities are limited by long-term illness or disability, compared with the England average of 18%. The favourable differential is slightly wider among those of working age (10% compared to 13%).

	West	West	Solihull	England
Whole Population				
Day-to-day activities limited a lot	8,386	7.6%	8.2%	8.3%
Day-to-day activities limited a little	10,387	9.4%	9.7%	9.3%
All Limited	18,773	17.0%	17.9%	17.6%
Day-to-day activities not limited	91,368	83.0%	82.1%	82.4%
Working Age Population (Age 16-64)				
Day-to-day activities limited a lot	2,676	3.9%	4.9%	5.6%
Day-to-day activities limited a little	4,215	6.2%	6.9%	7.1%
All Limited	6,891	10.1%	11.8%	12.7%
Day-to-day activities not limited	61,282	89.9%	88.2%	87.3%

Source: ONS Census

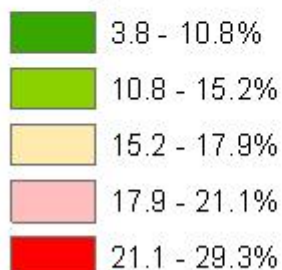
Population Whose Day to Day Activities are Limited by Ill Health or Disability



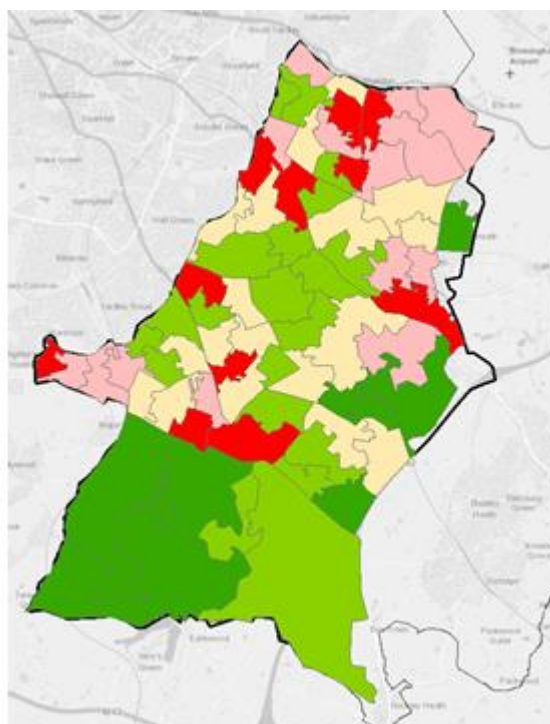
Although the proportion of West Solihull residents who say that their day to day activities are limited is slightly below the England average (17% compared to 18%), in a local context there are a number of hotspots. Primarily these are the more deprived neighbourhoods in the locality and those with a large older population, including Olton South (29%), Ulverley East (29%), Solihull Lodge (29%), Solihull Hospital (28%) and Hobs Moat North (28%).

Residents Whose Day to Day Activities are Limited by Long Health or Disability in West Solihull

% Population



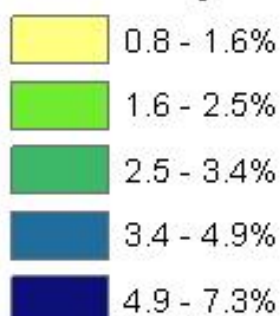
Source: ONS Census 2011



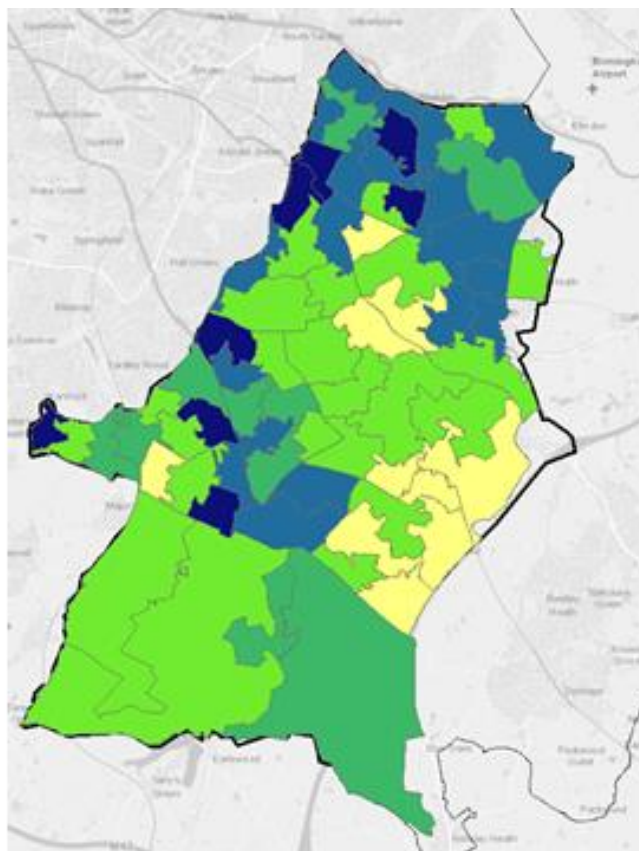
A total of 2,840 individuals in West Solihull receive Disability Living Allowance, equating to 3.1% of the 16+ population, compared to the Solihull average of 3.8% and the England average of 4.0%.

Residents aged 16+ receiving Disability Living Allowance

% 16+ Population



Source: DWP

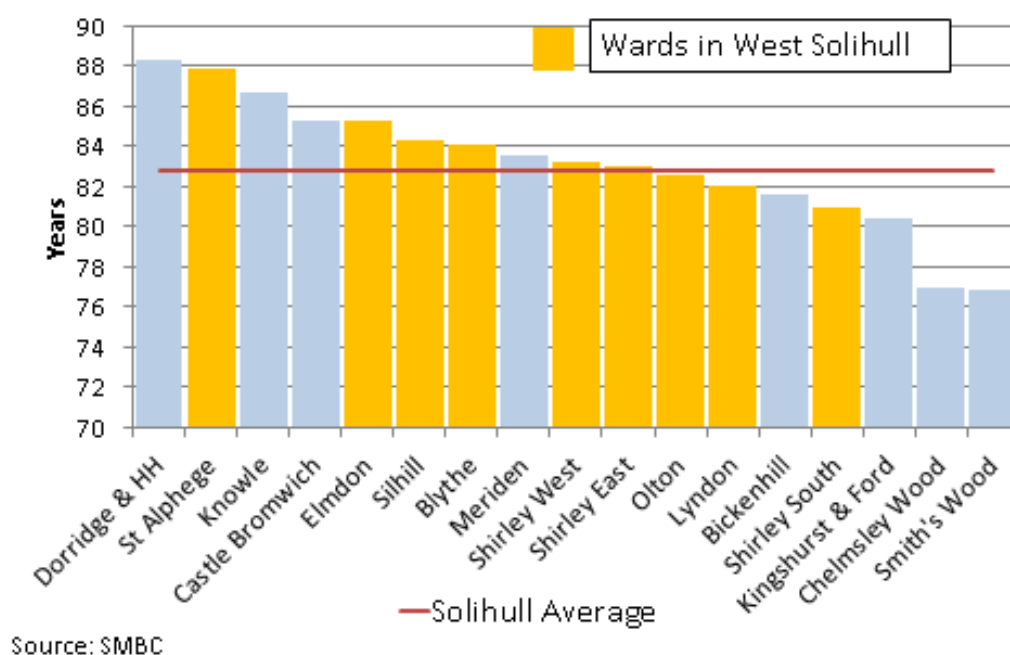


Life expectancy at birth is above the Solihull average for all wards in West Solihull with the exception of Shirley South and Lyndon where it is only marginally below average.

	Life Expectancy at Birth (Years) 2014-16		
	All People	Males	Females
Blythe	84.1	83.1	85.3
Elmdon	85.3	81.8	89.4
Lyndon	82	80.2	83.7
Olton	82.6	81.4	83.7
Shirley East	83	81.3	84.7
Shirley South	81	80.4	81.4
Silhill	84.3	82.7	85.6
St Alphege	87.9	85	90.6
Solihull Average	82.8	80.9	84.7

Source: SMBC

Life Expectancy at Birth 2014-16

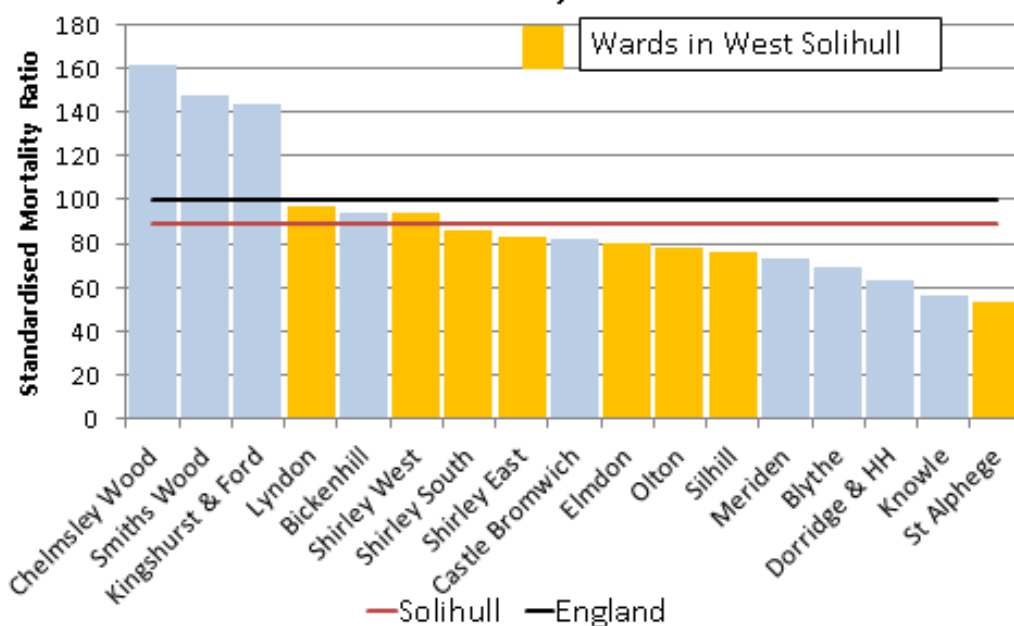


Deaths under the age of 75 (classified as premature mortality) are less common in all wards in West Solihull than across England as a whole. The only exception to this pattern are the above average premature death rates from Coronary Heart Disease evident in Shirley West and Lyndon.

	Deaths Under Age of 75 (Standardised Mortality Ratio)			
	All Causes	Cancer	Circulatory Disease	Coronary Heart Disease
Blythe	69.2	85.9	56	29.8
Elmdon	79.7	98.6	62.6	59.5
Lyndon	96.8	96.6	103.7	103.8
Olton	78	83.4	71.7	71.9
Shirley East	83	74.2	93.6	116
Shirley South	86.5	94	96.7	84
Shirley West	93.7	91.4	86	106.6
Silhill	76	95.1	47	36.4
St Alphege	52.8	59.1	48.2	54.7
Solihull Average	89.0	96.9	81.0	81.2
England Average	100	100	100	100

Source: Public Health England

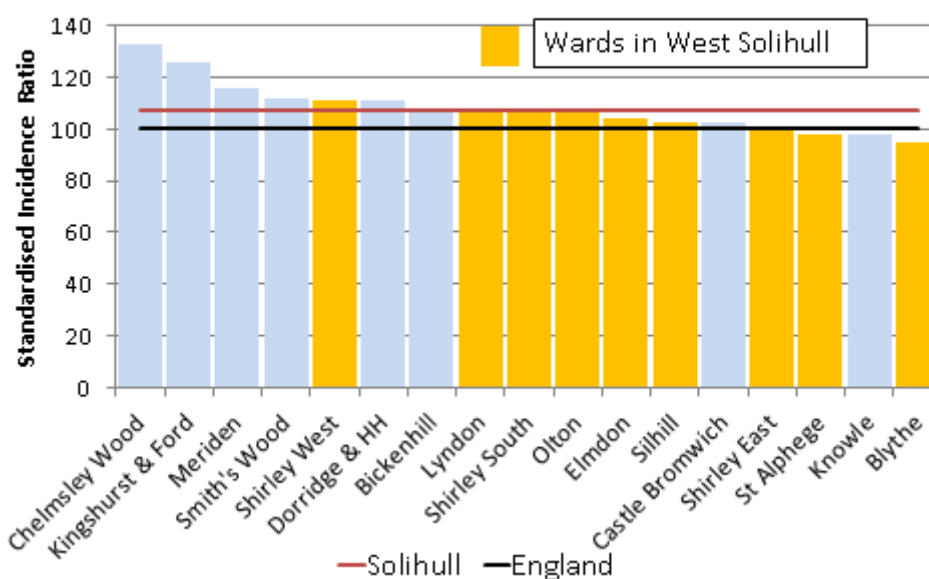
Premature Mortality (Deaths Under Age of 75)



Source: Public Health England

The incidence of cancer is marginally above the England average in the majority of wards in West Solihull, although only Shirley South is at the upper end of the spectrum for Solihull. Blythe has the lowest cancer incidence in Solihull.

Incidence of All Cancers



Source: Public Health England

The pattern varies by type of cancer, with lung cancer much less prevalent in West Solihull the England average, but relatively high rates of prostate cancer and in select West Solihull wards above average incidence of breast cancer and colorectal cancer.

	Cancer Incidence (Standardised Incidence Ratio)				
	All Cancer	Breast Cancer	Colorectal Cancer	Lung Cancer	Prostate Cancer
Blythe	94.6	82.5	105.6	38.7	158.6
Elmdon	104.1	87.1	111.1	80.7	140
Lyndon	106.9	114.9	103.8	96.4	120.7
Olton	106.3	112.7	76	77.8	164.3
Shirley East	99.8	104	109.4	91.1	131.2
Shirley South	106.6	98	112.4	81.6	140.6
Shirley West	111.3	120.9	112.3	82.8	145.6
Silhill	102.2	107.2	84.6	75.2	128.1
St Alphege	98	112.1	108.7	57.3	123.7
Solihull Average	107.1	105.4	103.3	90.5	137.8
England Average	100	100	100	100	100

Source: Public Health England

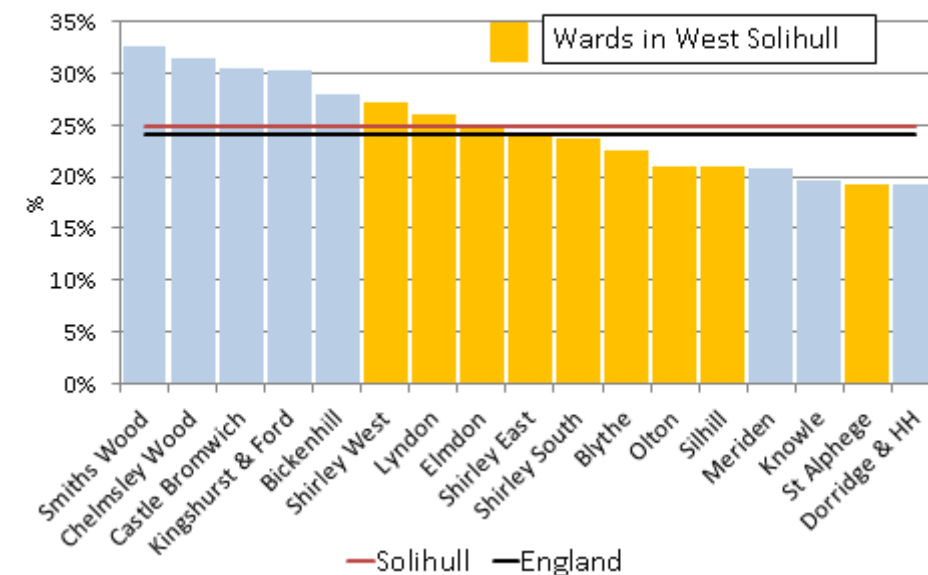
Modelled estimates from Public Health England show that in most West Solihull wards proportionally fewer adults are classified as obese. However, above average levels are evident in Shirley West, Lyndon and to a lesser extent Olton. The levels of obesity are largely consistent with the proportion of adults eating healthily.

The modelled estimates of the number of binge drinking adults in West Solihull are broadly in-line with the England average, although hospital data shows that stays for alcohol related harm are notably above average in the Lyndon and Elmdon wards.

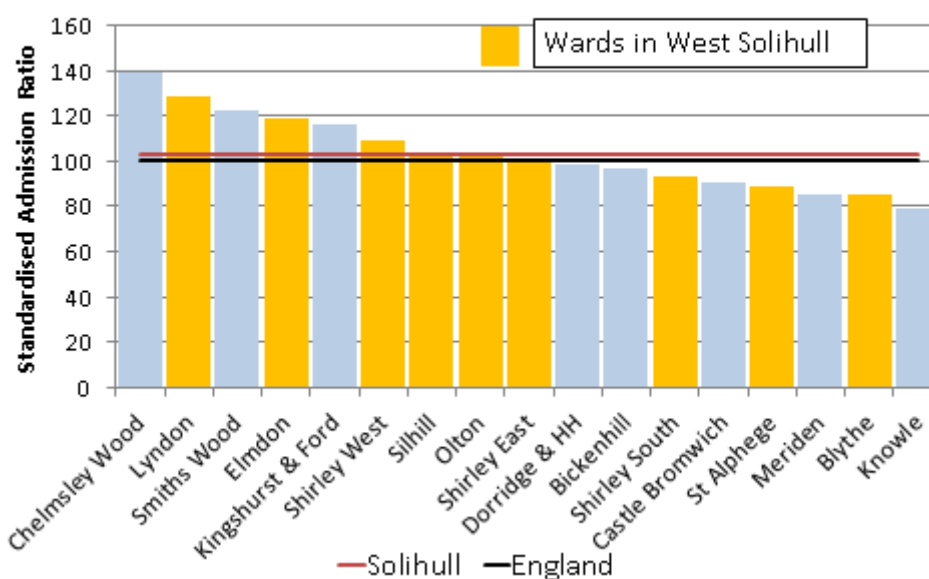
	Obese adults	Binge drinking adults	Healthy eating adults
Blythe	22.5%	20.7%	33.2%
Elmdon	25.1%	18.4%	27.2%
Lyndon	26.1%	20.8%	25.2%
Olton	21.0%	18.8%	31.1%
Shirley East	24.0%	17.6%	30.1%
Shirley South	23.6%	18.2%	30.8%
Shirley West	27.1%	19.8%	26.6%
Silhill	20.9%	17.0%	34.5%
St Alphege	19.3%	18.5%	37.1%
Solihull	24.9%	20.2%	28.5%
England	24.1%	20.0%	28.7%

Source: Public Health England

Obese Adults



Hospital Stays for Alcohol Related Harm



Data from the Solihull Place Survey shows that just 8% of West Solihull respondents say that they have not been physically active over the last week. This is marginally fewer than the Solihull average (10%). The proportion who say that they are active on a daily basis is also slightly above average (62% compared to 60%).

	On how many of the last 7 days were you physically active continuously for 20 minutes or longer?		
	West Total	% Respondents	
		West	Solihull Average
None	30	8%	10%
1 to 2 Days	37	10%	9%
3 to 4 Days	78	21%	21%
5 Days and over	232	62%	60%
Total	377		

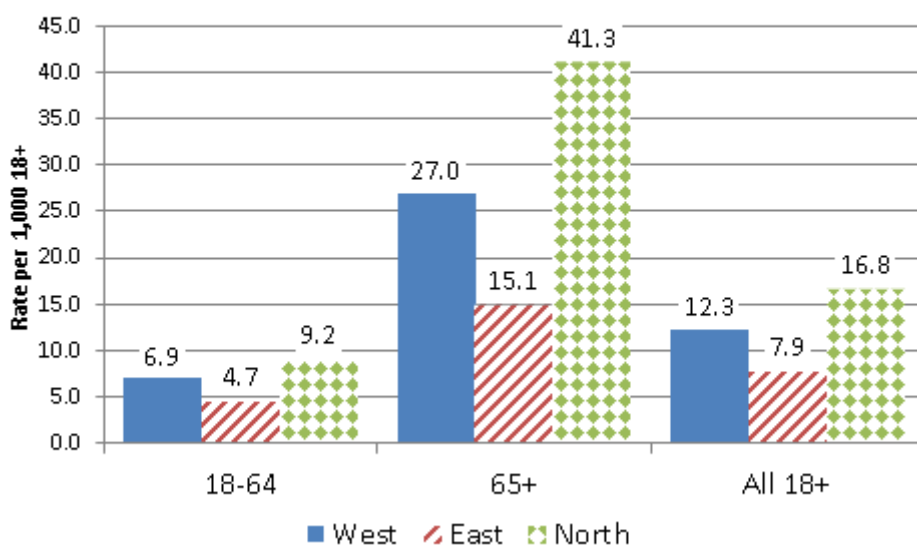
Source: SMBC Place Survey 2018

Adult Social Care

There are currently 1,102 adults in West Solihull aged 18 and over receiving support from Solihull adult social care (453 aged 18-64, 649 aged 65 and over)³. This equates to 12.3 per 1,000 residents a lower rate than in North Solihull, but higher than that in the East of the borough. The same pattern is evident among both the 18-64 age group and among older people aged 65 and over.

³ Excludes those receiving reablement support

Adult Social Care Clients (Rate per 1,000 Population)



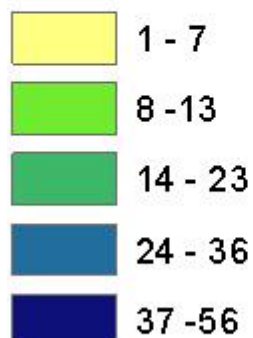
Source: SMBC

77% of adults in West Solihull receiving a package of care from adult social services are in receipt of some form of community support (including homecare and daycare), 18% are in a care home setting (residential, nursing and extra care) and 5% are in Supported Living. Community care is the most common type of support among both adults aged 18-64 (79%) and older people aged 65 and over (76%).

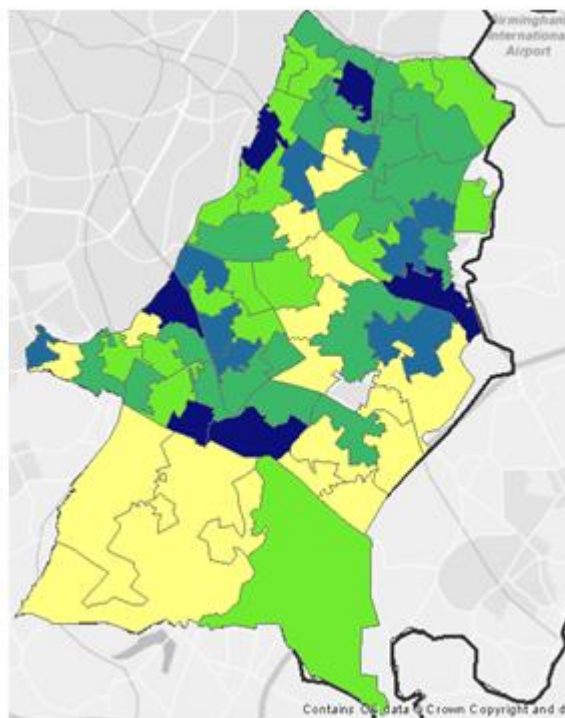
As the map below shows there are various concentrations of Adult Social Care clients in West Solihull, particularly in Olton, Lyndon, Shirley South, along the Stratford Road in Shirley East and around Solihull Hospital. These clusters reflect the location of care homes and extra care schemes.

Adult Social
Care Clients
Aged 18+

ASC Clients



Source: SMBC

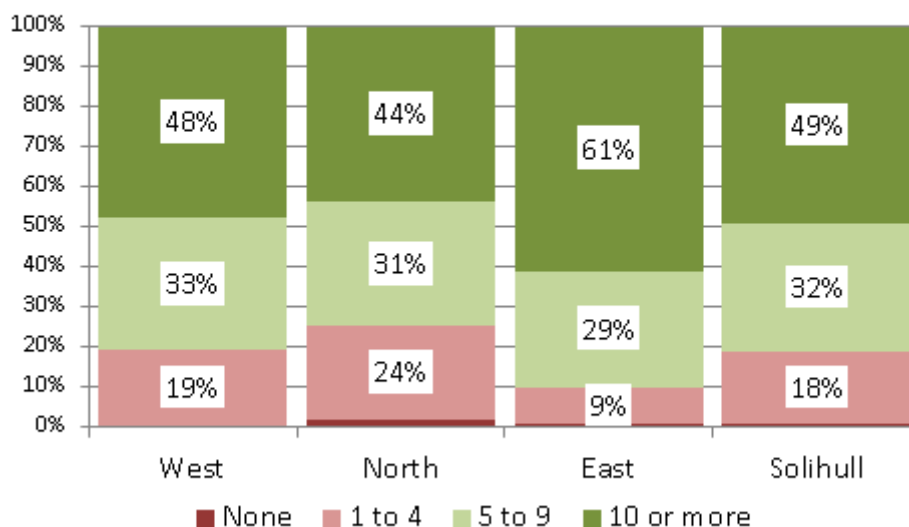


Social Isolation

Responses from the 2018 Place Survey show that most people who live in West Solihull know five or more people in their immediate neighbourhood and say that a neighbour would definitely or possibly help them if they were to fall ill. Like Solihull as a whole most respondents from West Solihull do not feel socially isolated.

Less than 1% of West Solihull respondents to the Place Survey say that they do not know anybody in their immediate neighbourhood by name, while at the other end of the spectrum 81% say that they know at least five people (including 48% who know 10 people or more).

How many People in your Neighbourhood do you Know by Name?



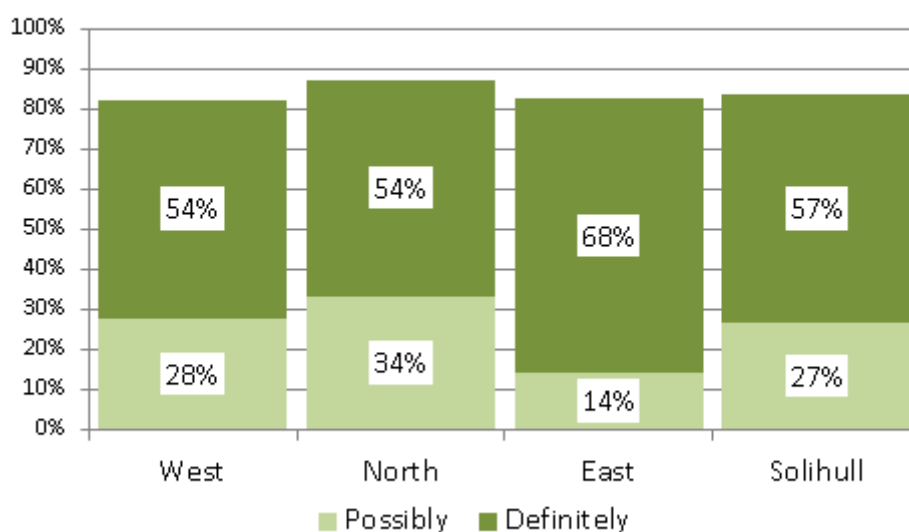
Source: SMBCPlace Survey 2018

82% of residents in the West Solihull locality think that it is likely that a neighbour would give them practical help if they were to fall ill (54% definitely, 28% possibly) compared to just 18% who think that it is either fairly or very unlikely they would get help.

	If you were to fall ill, do you think neighbours would give you practical help?		
	West Total	% Respondents	
		West	Solihull Average
Yes, definitely	204	54%	57%
Yes, possibly	105	28%	27%
Fairly unlikely	37	10%	10%
Very unlikely	29	8%	7%
Total	376		

Source: SMBC Place Survey 2018

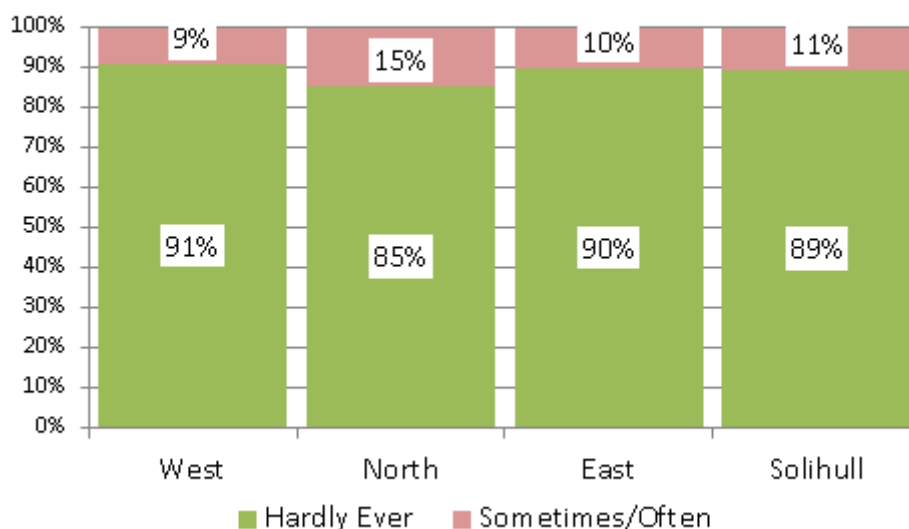
Respondents who think neighbours would help them if they fell ill



Source: SMBCPlace Survey 2018

91% of respondents from West Solihull say that hardly ever feel isolated from others, with 9% saying that they sometimes do. This is a marginally more positive response than across Solihull as a whole.

How Often Do You feel Isolated from Others?



Source: SMBCPlace Survey 2018

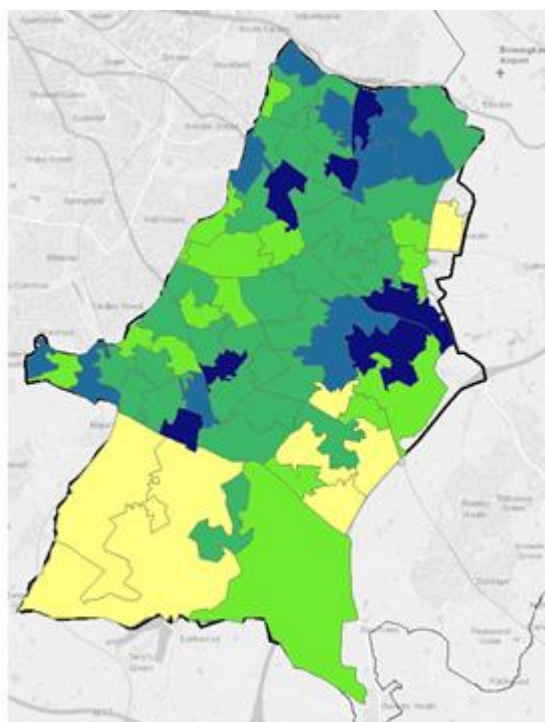
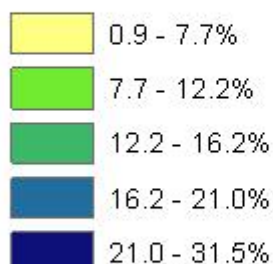
Research evidence shows that there are a variety of risk factors associated with social isolation. For instance, people employed in manual occupations, those with lower level qualifications and those on lower incomes are less likely to extensive social networks. Fear

of crime, ill health and unemployment all described elsewhere in this profile can also be a factor.

Older people living alone and those caring from someone with a long-term condition or disability are particularly vulnerable to social isolation. Older people living alone account for 14.5% of all households in the West Solihull locality, although the proportion rises to over well over 25% in many neighbourhoods. The highest concentrations can be found in the Solihull Hospital (32%), Stratford Road South-East (29%), Olton Reservoir (27%), Hatchford Brook (25%), Solihull Brueton (25%) and Ulverley East (25%) LSOAs.

**People Living Alone
Aged 65 and Over
in West Solihull**

% Households



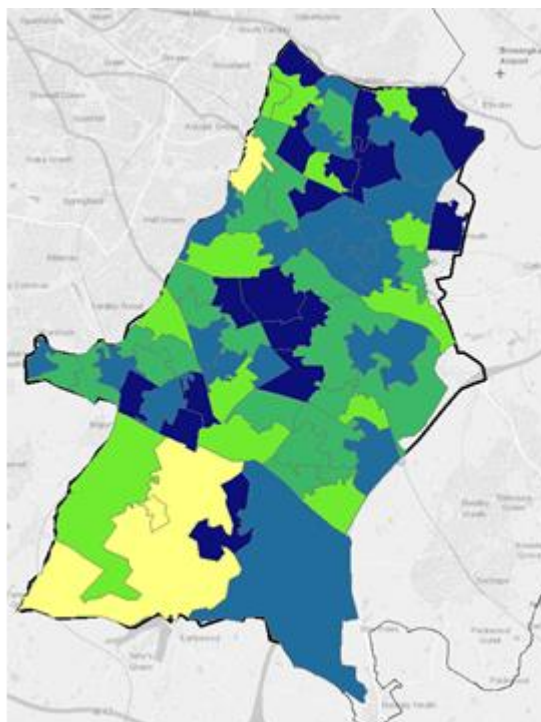
Source: ONS Census 2011

12% of West Solihull residents provide unpaid care for a relative, friend or neighbour, broadly in-line with the Solihull average and just above that for England as a whole. A large majority of these carers provide 1 to 19 hours of care per week, with 2,511 individuals (2.3% of population) providing care for 50 hours or more per week.

	West Total	% Population		
		West	Solihull Average	England
1 to 19 hours care	8,944	8.1%	7.8%	6.5%
20 to 49 hours care	1,472	1.3%	1.4%	1.4%
50+ hours care	2,511	2.3%	2.5%	2.4%
All Carers	12,927	11.7%	11.7%	10.2%
Non-Carers	97,214	88.3%	88.3%	89.8%

Source: ONS Census 2011

The proportion of residents who provide unpaid care is fairly evenly distributed throughout West Solihull with (Dickens Heath aside) a fairly narrow range at an LSOA level. Neighbourhoods with above average levels of carers include Sharmans Cross North, Land Rover North and Woodlands (all 15% of population).



Source: ONS Census

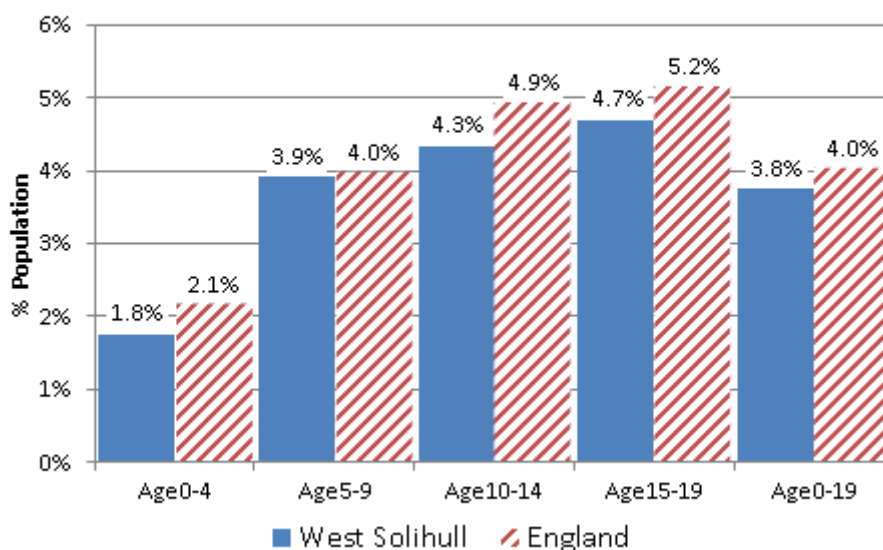
Children & Young People and Education

At the time of the 2011 Census the day to day activities of 961 children and young people aged 0-19 years in the West Solihull locality were limited by their long-term health or disability. This represents 3.8% of all children & young people aged 0-19 in the area, broadly the same as the England and Solihull averages. The proportion with whose activities are limited is in-line or slightly below the average in West Solihull for all age groups.

Children & Young People whose Day to Day Activities are Limited by Long-Term Health or Disability				
Age Group	West	% Population		
		West	Solihull Average	England
Age 0-4 Years	102	1.8%	1.9%	2.1%
Age 5-9 Years	239	3.9%	4.2%	4.0%
Age 10-14 Years	294	4.3%	4.9%	4.9%
Age 15-19 Years	326	4.7%	5.0%	5.2%
All Age 0-19 Years	961	3.8%	4.1%	4.0%

Source: ONS Census 2011

Children & Young People Whose Day to Day Activities are Limited by Ill Health or Disability



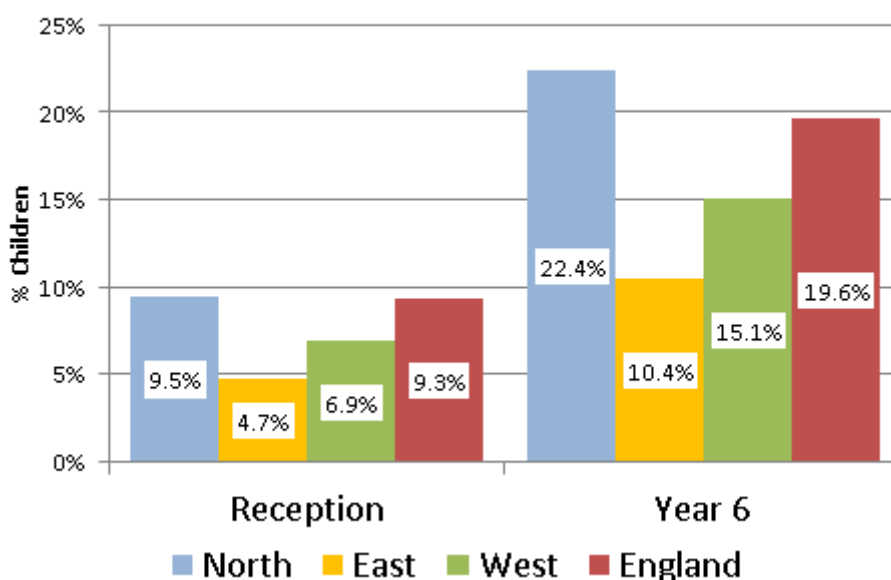
Source: ONS Census 2011

There are proportionally fewer children classified as obese in the West Solihull locality than either the England or Solihull averages. Nationally, obesity amongst children has been rising in recent years, particularly among Year 6 children (aged 10-11). The trend in West Solihull is similar with the prevalence among year 6 rising from 13.4% in 2012/13 to 15.1% in 2016/17.

	Obese children (Reception)	Obese children (Year 6)
North Solihull	9.5%	22.4%
East Solihull	4.7%	10.4%
West Solihull	6.9%	15.1%
Solihull	7.4%	16.7%
England	9.3%	19.6%

Source: National Child Measurement Programme, NHS Digital 2014-2017

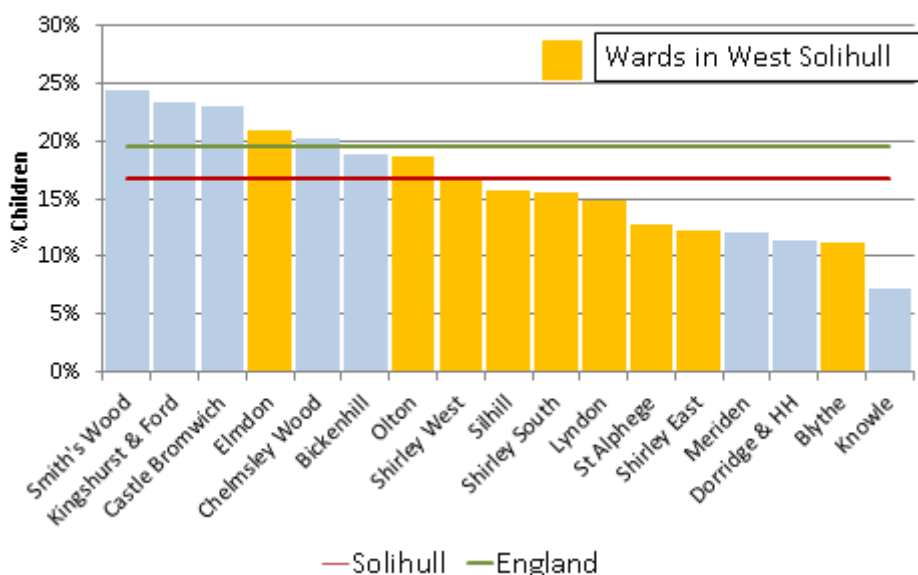
Children Classified as Obese



Source: National Child Measurement Programme, NHS Digital

As the chart below shows, all wards in West Solihull apart from Elmdon have a below England proportion of children classified as obese at year 6.

Children in Year 6 Classified as Obese



Source: National Child Measurement Programme, NHS Digital

Demand for Childrens Services is lower in West Solihull than the borough average. By way of example the table below shows the number of children per 1,000 either classified as being Children in Need (CIN) or in Child Protection. 36% of all children aged 0-16 years of age known in this way to Solihull Childrens Services live in West Solihull. The percentage who

live in West Solihull is slightly lower among the youngest children (27% of Solihull total for under 5s) and higher among older children (40% for 11-16 year olds).

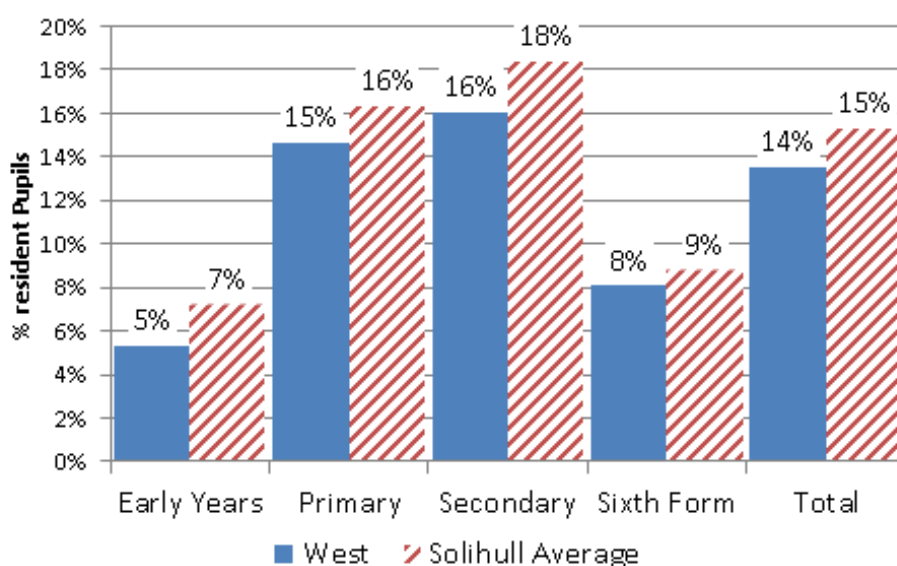
	Children Known to Social services (Children in Need and Child Protection)			
	Number of Children in West	% Solihull Total	Rate per 1,000 Population	
			West	Solihull Average
Under 5	236	27%	10.3	18.9
Age 5-10	317	39%	15.5	20.3
Age 11-16	290	40%	14.5	19.1
All Aged 0-16	843	36%	13.7	19.5
<i>Source: SMBC</i>				

At the time of the Autumn 2017 school Census there were 2,097 children living in West Solihull with a Special Educational Need (443 with an Education or Health Care Plan or Statement of SEN with a further 1,654 receiving SEN support). This equates to 14% of all children, compared to the average of 15% across Solihull as a whole.

As the table below shows the proportion of children living in West Solihull with an SEN is slightly lower than the Solihull average among all age groups.

% Resident Children with a Special Educational Need				
School Year	North	East	West	Solihull Average
Early Years (Nursery & Reception)	12%	4%	5%	7%
Primary (Years 1-6)	22%	10%	15%	16%
Secondary (Years 7-11)	24%	17%	16%	18%
Further Education (Years 12-13)	11%	7%	8%	9%
Total	21%	11%	14%	15%
<i>Source: SMBC School Census</i>				

Resident Pupils with a Special Educational Need

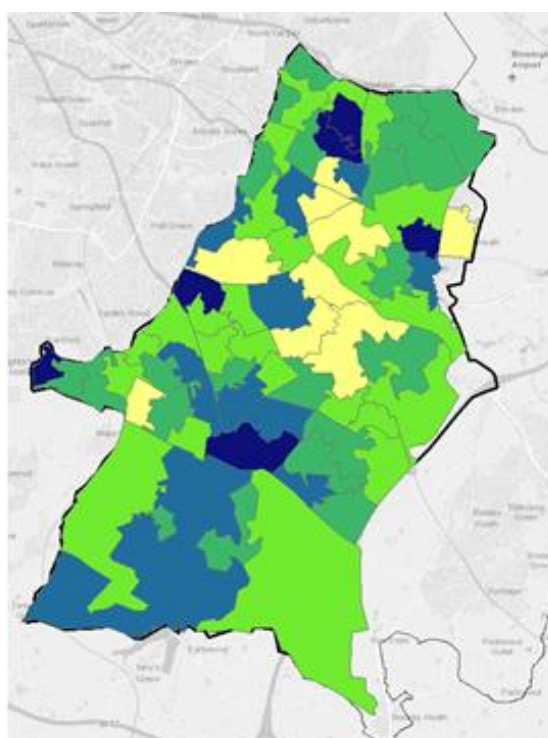
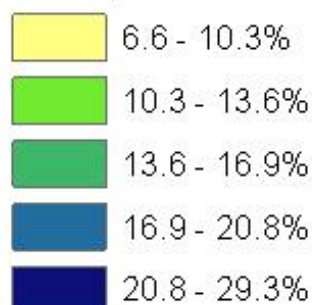


Source: SMBC School Census

Although the proportion of children with a SEN is in-line with the Solihull average across West Solihull as a whole, there are a number of neighbourhoods with relatively high concentrations. Although not exclusively, these tend to be areas with relatively higher levels of deprivation. As the map below shows 29% of primary and secondary school pupils in Hobs Moat North have a SEN, with a similarly above average number in Green Hill (24%), Solihull Lodge (22%), Hobs Moat South (22%), Cranmore South (22%), Damsonwood North (22%).

Primary and Secondary Pupils with a Special Educational Need

% Pupils



Source: SMBC School Census

Not all resident pupils attend a school in West Solihull and not all pupils at a West Solihull school will live in the locality, with cross border flows particularly evident at Secondary school level.

There are 26 primary schools based in the West Solihull locality.

Proportionally fewer pupils attending a West Solihull primary school have a Special Educational Need and are eligible for a Free School Meal than England as a whole. Proportionally more pupils achieve the expected standard in reading, writing and Maths at KS2, with West Solihull schools also exceeding the Solihull and England averages in terms of the percentage of pupils achieving a higher standard.

Primary schools 2016/17			
Measure	West Solihull Schools	Solihull Average	England
SEN pupils with a statement or EHC plan	1.2%	3.8%	2.9%
SEN support	11.5%	12.1%	12.0%
SEN Total	12.7%	15.9%	14.9%
% FSM	7.9%	15.0%	15.1%
% Pupils Persistent Absentees	6.3%	7.5%	8.3%
% English as Second Language	11.7%	9.7%	20.8%
% Pupils Meeting Expected Standard	65.8%	65.0%	61%
% Pupils Meeting Higher Standard	11.4%	10%	9%
<i>Source: Department for Education</i>			

There are seven secondary schools based in the West Solihull locality.

Proportionally far fewer pupils attending a West Solihull secondary school are eligible for a Free School Meal than across England as a whole and slightly less have a Special Educational Need (13% compared to 15%). The average attainment 8 per pupil at KS4 is above the England average.

Secondary schools 2016/17			
Measure	West Solihull Schools	Solihull Average	England
SEN pupils with a statement or EHC plan	2.4%	5.2%	4.3%
SEN support	10.3%	11.5%	10.5%
SEN Total	12.7%	16.7%	14.8%
% FSM	8.8%	13.9%	14.4%
% Pupils Persistent Absentees	11.9%	15.3%	13.5%
% English as Second Language	8.7%	6.3%	16.1%
Average Attainment 8 Score	49.1	47.1	44.6
% Pupils Disadvantaged Pupils Achieving A*-C in English & Mathematics	43.4%	44.5%	43.1%
% Pupils Non-Disadvantaged Pupils Achieving A*-C in English & Mathematics	74.7%	71.7%	70.6%
<i>Source: Department for Education</i>			

Crime and Community Safety

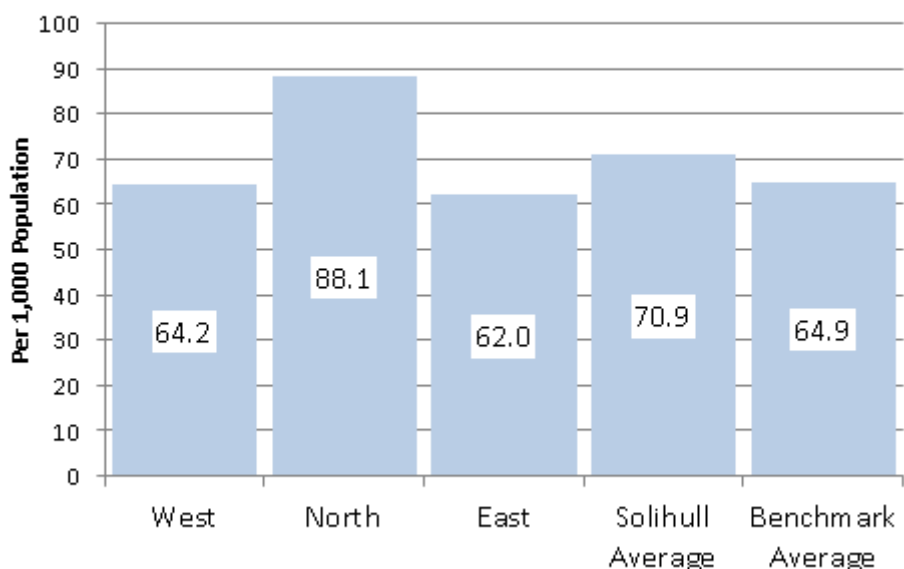
Solihull has the third lowest crime rate compared to the other local authority areas in the West Midlands (out of 7) and is ranked 11 out of 15 among its benchmark group of Local Authorities. Over recent years crime has been increasing, with key trends including rises in burglary, robbery and vehicle crime. However, this is not exclusive to Solihull and the same increases can be seen across the whole of the West Midlands Police Force.

Some areas in Solihull have factors that make them more likely to become crime generators and attractors and therefore account for a higher proportion of crime than others. This is the case with Chelmsley Wood, St Alphege and Kingshurst & Fordbridge where crime rates were 1.5 times the average for Solihull as a whole. By contrast, Knowle had half the average number of crimes with Dorridge & Hockley Heath, Elmdon, Shirley East, Meriden, Blythe and Silhill also well below average.

There were 7,253 total reported crimes recorded in West Solihull in the year to September 2017, representing 49% of all reported crimes in the borough. At 64.2 per 1,000 population West Solihull has a lower crime rate than the borough average (70.9 per 1,000) and is broadly in-line with the benchmark for the Most Similar Group of Local Authorities (64.9 per 1,000).

	Crime & Safety Demand			
	West Count	% Solihull Total	Rate per 1,000	
			West	Solihull Average
Total Recorded Crime	7,253	49%	64.2	70.9
Other Demand Measures				
Anti-Social Behaviour	1,342	38%	11.9	14.7
Public Safety & Welfare	9,171	45%	81.2	98.1
Road Traffic Collisions - KSI	23	39%	0.20	0.27
Deliberate Fires	97	46%	0.86	1.19
<i>Source: Safer Solihull Strategic Assessment 2018</i>				

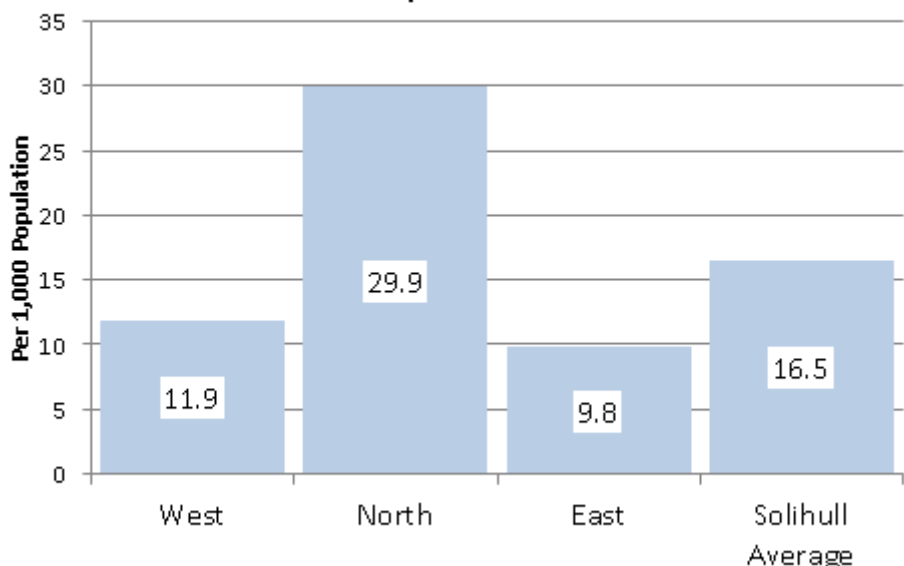
Recorded Crime Rates per 1,000 Population



Source: Safer Solihull Strategic Assessment 2018

There were 1,342 incidents of Anti-Social Behaviour (ASB) in the West Solihull locality in the year to September 2017, representing just 38% of the Borough total. At 11.9 per 1,000 population the ASB rate is well below the Solihull average.

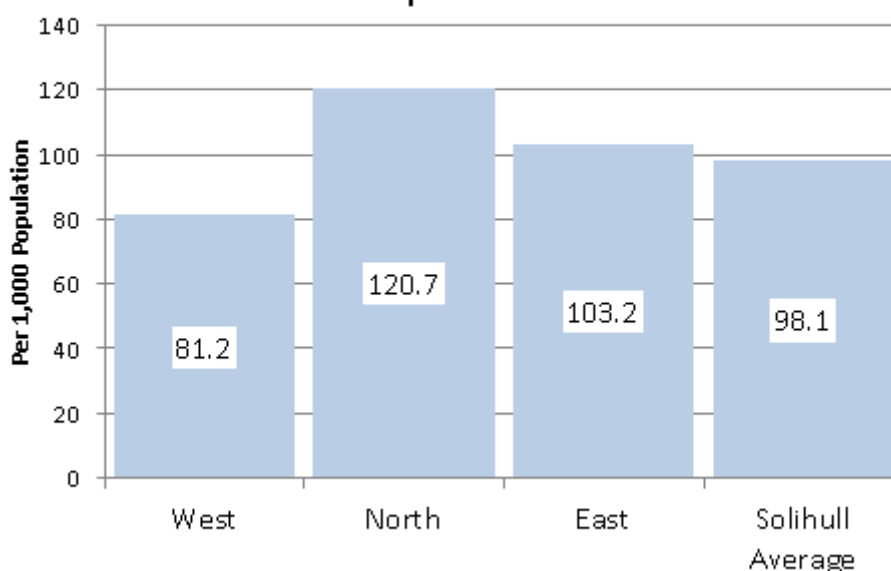
Recorded Anti-Social Behaviour Rates per 1,000 Population



Source: Safer Solihull Strategic Assessment 2018

There were 9,171 Public Safety & Welfare (PSW)⁴ incidents recorded in the West Solihull locality in the year to September 2017. At 81.2 per 1,000 population the PSW rate is the lowest in Solihull, although it is notably that the differential between the three localities is much less than ASB.

Recorded Public Safety & Welfare Rates per 1,000 Population



Source: Safer Solihull Strategic Assessment 2018

Total recorded crime in the West Solihull locality increased by over 20% in the year to September 2017, higher than the West Midlands Police average of 13.9%. Over the same period Anti-Social Behaviour fell by nearly 7% in excess of the 4.4% fall recorded across the West Midlands Police force area as a whole.

Offence Group	Oct 15-Sep 16	Oct 16-Sep 17	Annual Difference			
			West Solihull Count	West Solihull	Solihull Average	West Midlands Force
Total Recorded Crime	6,019	7,253	+1,234	+20.5%	+20.2%	+13.9%
Other Demand Measures						
Anti-Social Behaviour	1,437	1,342	-95	-6.6%	+11.1%	-4.4%
Public Safety & Welfare	8,517	9,171	+654	+7.7%	+6.5%	+1.9%
KSI	22	23	+1	4.6%	0.0%	-12.2%
Deliberate Fires	68	97	+29	42.6%	+47.1%	+27.7%

Source: Safer Solihull Strategic Assessment 2018

⁴ Due to the subjective nature of Anti-Social Behaviour and Public Safety/Welfare, there is a cross over between the two classifications which is why both have been included for analysis. Recordings of incidents of Public Safety/Welfare outnumber Anti-Social Behaviour by approx. 5 to 1.

As the table below shows the top 10 offences accounted for 61.4% of Total Recorded Crime in the West area.

Top 10 Individual Offences	Crime Count
Theft from Shop or stall	917
Theft from Motor Vehicle	834
Theft of Motor Vehicle	389
Assault Occasion ABH	357
Burglary Dwelling	351
Burglary Residential	345
Criminal Damage to vehicle	327
Theft Other	317
Make off w/o payment	309
Interfere with Vehicle	306

Source: Safer Solihull Strategic Assessment 2018

As the table below shows, the Top 10 named streets accounted for 31% of the Total Recorded Crime in the West Locality.

Top 10 Streets 2016/17	
Street	Crime Count
Stratford Road	849
Warwick Road	335
High Street	238
Mell Square	168
Lode Lane	131
Hobs Moat Road	123
Blossomfield Road	114
Haslucks Green Road	104
Station Road	100
Marshall Lake Road	83

Source: Safer Solihull Strategic Assessment 2018

The hotspots for Total Recorded Crime and Anti-Social Behaviour/Public Safety Welfare show a considerable overlap within two areas, Solihull Town Centre and Stratford Road, Shirley. Crime hotspots were also found Sears Retail Park and a large supermarket centre on Stratford Road.

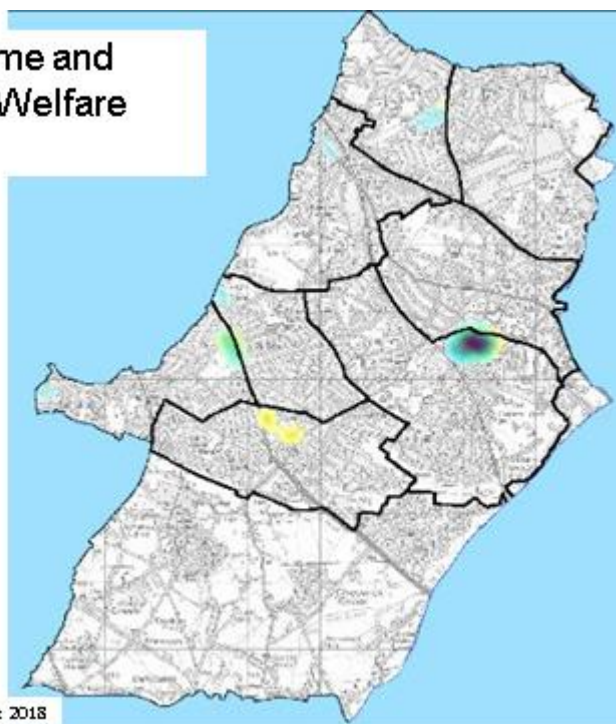
There are 4 locations which are hotspots for Anti-Social Behaviour/Public Safety Welfare – near the Ice Skating Rink/Hobs Moat Road, Warwick Road - Olton, Stratford Road heading towards the Robin Hood Island and around Kilcote Road, Shirley.

Total Recorded Crime and ASB/Public Safety Welfare Hotspots

ASB and PSW



TRC



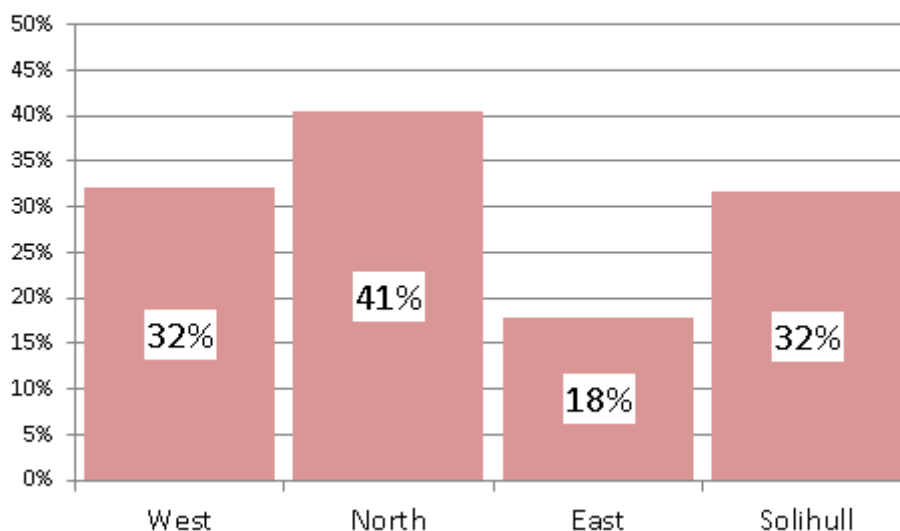
Source: Safer Solihull Strategic Assessment 2018

53% of West Solihull respondents to the Solihull Place Survey say that they feel safe in the local area after dark compared to 32% who feel unsafe (13% very unsafe).

	How Safe Do You Feel After Dark in Your Local Area		
	Total West	% Respondents	
		West	Solihull Average
Very safe	60	16%	17%
Fairly safe	142	38%	37%
Neither safe nor unsafe	48	13%	12%
Fairly unsafe	73	19%	19%
Very unsafe	48	13%	13%
Don't know	7	2%	3%
All Responses	378		
Total Safe	202	53%	54%
Total Unsafe	121	32%	32%

Source: SMBC Place Survey 2018

Respondents Who Feel Unsafe in their Local Area After Dark



Source: SMBC Place Survey 2018

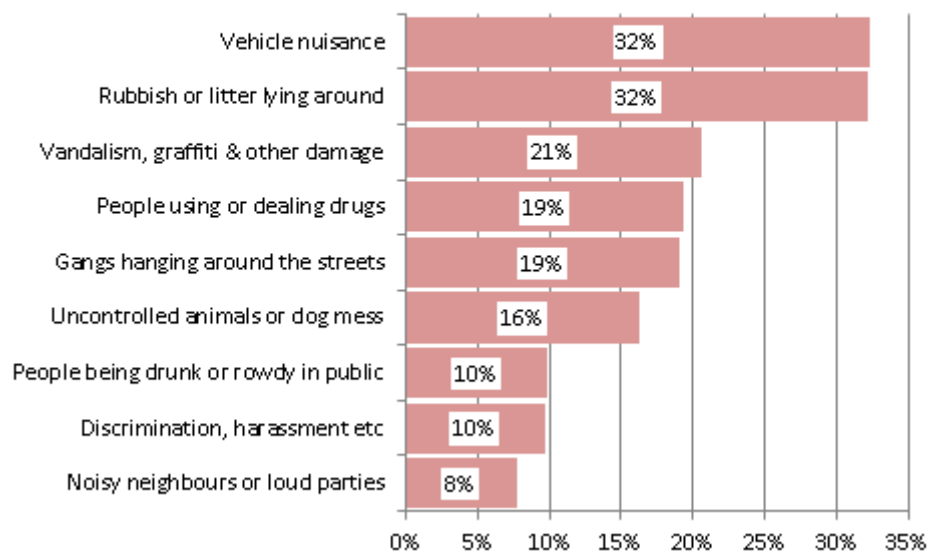
The 2018 Place Survey also asked respondents about nine specific types of ASB in the local area. For most of these issues responses from West Solihull residents were in-line with the Solihull average.

Nearly a third of West Solihull respondents think that vehicle nuisance like joyriding and abandoned cars and rubbish & litter lying around is a problem in their local area. One in five also cite vandalism, people using or dealing drugs and gangs hanging around in the streets.

% Who Think That There is a Problem in Local Area		
Type of ASB	West Solihull	Solihull Average
Discrimination, harassment etc	10%	8%
Noisy neighbours or loud parties	8%	7%
Vehicle nuisance, like joyriding, abandoned cars etc	32%	32%
Gangs hanging around the streets	19%	18%
Uncontrolled animals or dog mess	16%	14%
People using or dealing drugs	19%	22%
People being drunk or rowdy in public places	10%	8%
Vandalism, graffiti and other deliberate damage to property or vehicles	21%	20%
Rubbish or litter lying around	32%	32%

Source: SMBC Place Survey 2018

Respondents in West Solihull who think there is a problem in their local area



Source: SMBCPlace Survey 2018

APPENDIX

Borough Map Showing Three Locality Areas

