

Solihull Parents' Network

Christmas 2024 Family Events



Images courtesy of (from clockwise) Warwick Castle, Kenilworth Castle and Touchwood Solihull.

Solihull Family Information Service
Call: 0800 389 8667
Email: familyinfo@solihull.gov.uk
Web: www.solihull.gov.uk/familyinfo

Balsall Common Library

283 Kenilworth Road, Balsall Common CV7 7EL

Christmas Craft and Relax





Christmas Craft and Relax

Monday 23 December
2.15 to 4.15pm

Escape to the library today for a selection of relaxing crafts. Suitable for children aged 4 to 11 years and their grown ups!

Balsall Common Library
283 Kenilworth Road, CV7 7EL
☎ 01676 532590 ➡ www.solihull.gov.uk/library-events

Find us on Facebook 





Dickens Heath Library

Old Dickens Heath Road, Solihull B90 1SD



Christmas Story Time with Rhymes and Crafts

Join us for our final story time of 2024 for a Christmas special. Christmas crafts and colouring will be available afterwards for all those on Santa's nice list!

Booking required as spaces are limited. Please book a place for everyone ages 2 years and over (including adults). We look forward to seeing you there!

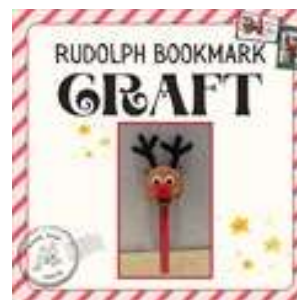
Age: 0-5 years
Dates: Thursday 19th December
Times: 10.15am to 11am
Cost: Free
Contact: 0121 744 6078
Email: libraries@solihull.gov.uk
Website: <https://www.solihull.gov.uk/library-events>



Rudolph Bookmark Craft

Join us at Dickens Heath Library to make a festive Rudolph bookmark! Booking is required online or in the library as places are limited. We look forward to seeing you there!

Age: 5 years upwards
 Dates: Saturday 21 December
 Times: 12.15pm to 1.15pm
 Cost: Free
 Contact: 0121 744 6078
 Email: libraries@solihull.gov.uk
 Website: <https://www.solihull.gov.uk/library-events>



Hobs Moat Library

Ulleries Road, Solihull, B92 8EB

Little Hobbits (Story Time) at Hobs Moat Library - Christmas

Join us on Thursday morning at 10:15am for a combined story and rhyme time session with a Christmas theme.

Age: 0-5 years
 Dates: Thursday 19 December
 Times: 10.15am to 11am
 Cost: Free
 Contact: 0121 743 4592
 Email: libraries@solihull.gov.uk
 Website: <https://www.solihull.gov.uk/library-events>



Chelmsley Wood Library

10 West Mall, Chelmsley Wood Shopping Centre, Chelmsley Wood, B37 5TN



Christmas Storytime and Craft at Chelmsley Wood Library



Join us for a magical Christmas storytime with rhymes and decorate your own special bauble to take home!

Monday 9th December 10:30-11:30

To reserve your space, please speak to a member of staff at Chelmsley Wood Library
on 0121 788 4380



The Core

Theatre Square, Touchwood, Solihull, B91 3RG

The Core Christmas Market – The Core Foyer

Do your festive shopping at The Core's Christmas Market, with handmade and artisan goods from small businesses & local artists.

Browse 30 different stalls including Christmas decorations, wreaths, pictures, prints, artwork, gingerbread, jewellery, pottery, comics/drawings, knitted items, yoga items, wellness items (diffusers, essential oils, creams), scarfs, candles, glasses, Christmas sacks, mugs and seat covers.

The Encore café will also be open so you can try out delicious festive treats including turkey baps, mulled wine, minced pies and more!

FREE entry - just drop in any time on Saturday 14 December between 10am and 4pm.



Santa's Christmas Cracker? - the show where every child receives a present from Santa!

Honalee Media are delighted to present their hit Santa Show this Christmas.

It really is the most wonderful time of the year, so it's no surprise that everyone at the North Pole is super-excited as Christmas draws near!

Father Christmas is busy making toys, Dotty the Elf is decorating the Christmas tree and Dasher the Reindeer is getting presents onto his sleigh - but then they meet a lost penguin who has never even heard of Christmas...Impossible!

But how to teach him all about Christmas? Dare they open the door marked For Christmas Emergencies Only? And can you help unleash the magic of Christmas by pulling one of Santa's Christmas Crackers?"

Join Father Christmas and friends for a fun, festive, musical adventure to discover the wonder of Christmas – you may even get to pull a cracker with Dotty the Elf!

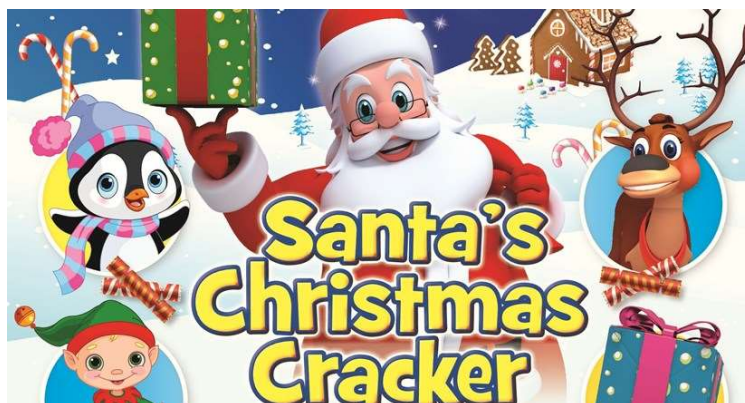
Santa's Christmas Cracker is a 45 minute, interactive family show, particularly suitable for 2-7 year olds. Afterwards the adventure continues as each child gets to meet Father Christmas and receive a specially wrapped present from him – it's the most Christmassy Christmas show ever, HO-HO-HO!

Songs include festive favourites:

Jingle Bells, Rudolph the Red-Nosed Reindeer,

The Twelve Days Of Christmas, Deck The Halls,

We Wish You A Merry Christmas and many more!



REVIEWS

"It was perfect, full of fun, singing and laughter, what better way to start the festive season!" – 'Mummy Monster' blog

"The Santa Shows have become our Christmas tradition and we love them! Perfect engagement with the children, lots of audience participation and the children were beside themselves when Father Christmas gave them a present after the show. Wonderful value for money and top rate entertainment!" - Natalie D, mum of Rae

"Eyes lit up full of wonder and joy – as my children walked away from receiving their gift they whispered, "That was the real Santa!" - Families North Hampshire

"A magical way to start our Christmas celebrations and a memory I shall treasure!" - Basingstoke Gazette

Age: 2 to 7 years

Dates: Friday 20th – Tuesday 24th December 2024

Times: Various see website for details

Cost: Ticket prices: £11.50 adult, £10.50 child, £42 family of 4.

Contact: 0121 704 6962

Email: thecoretheatre@solihull.gov.uk

Website: <https://www.thecoretheatresolihull.co.uk/whats-on/all-shows/santas-christmas-cracker/27365>

Elmwood Family Hub

37 Burton's Way, Smiths Wood, B36 0UG

Sensory Santa

Join North Solihull Additional Needs group for their Sensory Santa experience, running across two sessions.

3.00pm – 4.00pm and 4.30pm – 5.00pm. Places are limited, so contact North Solihull Additional Needs group for all session information.

Age: 0-5 years
Dates: Tuesday 10th December 2024
Times: 3pm – 4pm and 4.30pm - 5pm
Cost: Free
Email: northsolihulladditonalneedsgroup@outlook.com

Christmas Craft Session



Christmas Sensory Play

Come and join the festive fun with Solihull College and their sensory Christmas play. For children aged 18mths and upwards. Call in on the day at Elmwood Family Hub, no booking required!

Age: 18 months and upwards
 Dates: Friday 13th December 2024
 Times: 12.30pm – 2.30pm
 Cost: Free

Elmwood Family Hub Merry Christmas Celebration

Come and join us at our Christmas celebration event, we will have music sessions, Christmas play activities for children including messy play and arts and crafts, along with other festive fun! Call in on the day at Elmwood Family Hub, no booking required!

Age: All ages
 Dates: Thursday 19th December 2024
 Times: 3.30pm – 5.30pm
 Cost: Free



Families are most welcome to pop in and see our hub!

There is a play area and a sensory room that can be booked by families.

We also have some pre-loved school uniform and children's clothing including coats at reception.

To find out more please visit www.solihull.gov.uk/family-hubs or download the "Solihull Family Hubs" App. Alternatively, you can call us on 0121 779 1700 or email elmwoodfh@solihull.gov.uk or visit our facebook page <https://www.facebook.com/SolihullFamilyHubs>

Ackers Adventure

Golden Hillock Road, Sparkbrook, Birmingham B11 2PY



Festive Sessions

Come along and enjoy 30 minutes of festive **tobogganing** followed by a delicious luxury hot chocolate with marshmallows and cream. Exclusive toboggan slope use available or if you feel really energetic, try **tubing** on our main ski slope.

Advanced booking is essential via our website.

Age: 3 to 12 years (Tobogganing)
8 years and above (Tubing)
Dates: Sunday 1st December to Tuesday 31st December
Times: See website for details
Cost: £39 for up to 6 children (Tobogganing)
£13.50 per person (Tubing)
Contact: 0121 772 5111
Email: bookings@ackers-adventure.co.uk
Website: www.ackers-adventure.co.uk

Stay Active

Ackers Adventure

FESTIVE SESSIONS

INCLUDES A LUXURY HOT CHOCOLATE WITH CREAM AND MARSHMALLOWS FOR EACH PARTICIPANT

TUBING

30 MINUTES OF TUBING FOR £13.50, SUITABLE FOR AGES 8 AND ABOVE

TOBOGGANING

30 MINUTES OF TOBOGGANING FOR A GROUP OF 6 CHILDREN FOR JUST £39

Planet Ice Solihull

Hobs Moat Road, Solihull B92 8JN



Christmas Learn to Skate Camps

Our 3 or 5 Day Camps are designed for beginners who are looking to learn how to skate or those that want to improve their skills on the ice.

Our camps include a 30 minute group lesson, breakfast and a hot drink meal deal and public skate after your lesson to practice your skills.

If you are looking for additional training experience towards your Skate Excellence grades 1 to 8, then please talk to a member of staff, who can advise which course would be right for you.



Age: Adults and children of all ages
Dates/Times: Mondays to Fridays (throughout the school holidays)
Times: Please see website
Cost: £56 per 3 day course
£71 per 5 day course
Contact: Pre-book your 3 or 5 day camps via our website or by calling 0121 742 5561
Email: solihull@planet-ice.co.uk
Website: www.planet-ice.co.uk

Christmas Ice Skating

Amidst the festive glow, remember that our public ice skating sessions continue daily throughout the holiday season and beyond! Whether you're a seasoned skater or a newcomer eager to experience the thrill of gliding on ice, Planet Ice Solihull is your winter wonderland all year round.



Exciting news for our Ice Card Members this Christmas! Double discounts are set to sparkle on the 26th and 31st December 2024 and 1st January 2025, just in time for the festive celebrations.

Embrace the holiday spirit as our Ice Card Members enjoy a dazzling £4.80 off every magical ice-skating session on these special dates.

It's the perfect chance to unwrap the full magic of your Ice Card Membership benefits and skate joyfully into the New Year.

Please note: pre-book your sessions online to secure your spot in this winter wonderland

Stay Active

Skate and Spot Santa

Skate & Spot Santa at Planet Ice! ❄️ 🧊

Get into the festive spirit and join us for some icy fun! Spot Santa as he makes his way around the rink—whether he's walking, trading his sleigh for a Zamboni, or skating alongside you!

Join us for a joyful Christmas adventure this December! Find out more and book via our website.

Dates: Weekends in December.

Website: www.planet-ice.co.uk/

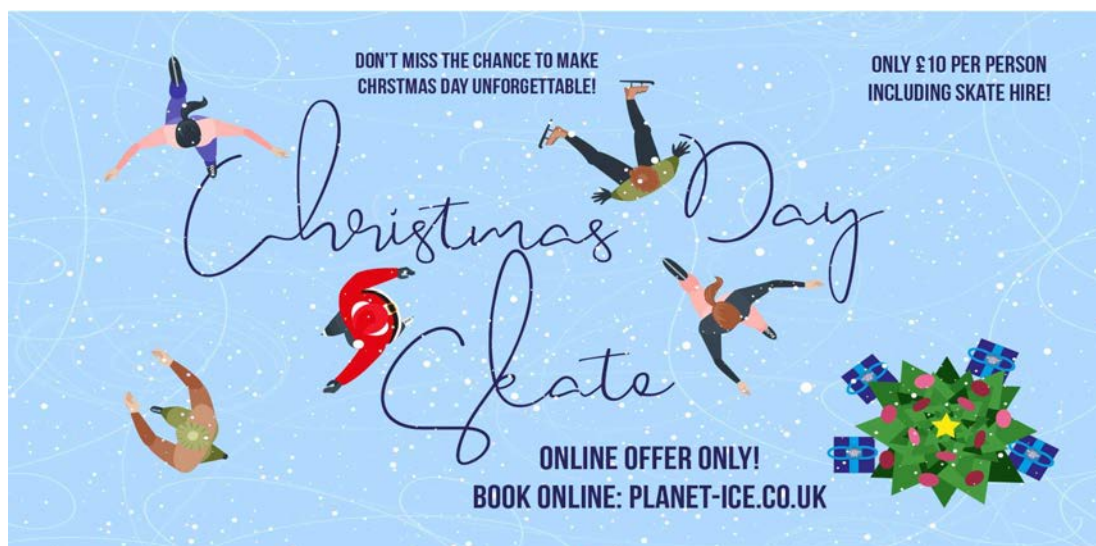


Christmas Day Skate

Make Your Christmas Day Unforgettable with Planet Ice!

Looking for something magical to do on Christmas Day? Join us for a festive skating treat!

For one day only, skate for just £10 per person when you book online! Get into the holiday spirit and enjoy this special offer while it lasts!



Four Ashes Golf Centre

Four Ashes Road, Dorridge, Solihull B93 8NQ



Festive Adventure Golf



Come and play adventure golf on our specially decorated festive course with Christmas trees, lights and decorations to get you in the Christmas spirit.

For more information visit our website.

Age: All ages

Days/Times: Throughout December:

Tuesday, Wednesday, Thursday 9.30am to 8.30pm (Last round at 7.30pm)

Saturdays (9am to 5pm)

Sundays (9.30am to 5pm)

Christmas Eve (9.30am to 5pm)

Christmas Day and Boxing Day (closed)

Friday 27th to Monday 30th December (9.30am to 6pm)

New Years Eve (9.30am to 5pm)

New Years Day (10am to 5pm)

Cost: Please see website

Email: info@fourashesgolfcentre.co.uk

Website: www.fourashesgolfcentre.co.uk



Stay Active

The Wave

New Union Street, Coventry CV1 2PS

Ride the Christmas wave

The Wave, a UK award-winning, indoor waterpark making a splash in the heart of Coventry!

From high-speed slides and a fun-packed splash zone to the exhilarating Wave Pool and relaxing Lazy River... There's something for thrill, spill and chill seekers of all ages to enjoy.



Dates: Saturdays throughout December
Times: 10.15am to 4pm (drop-in sessions)
Cost: £54 per family ticket (2 adults, 2 juniors)
Website: www.thewavecoventry.com

Stay Active

Art at the Heart CIC



The Courtyard Gallery, The Core, Homer Road, Solihull B91 3RG

How to Draw: Snow Leopard (Xmas Special)

Are you looking for a unique and creative Christmas gift? Then why not join us for our 'Snow Leopard Drawing Workshop' for kids (ages 7-13)! This special session teaches children how to create a realistic Snow Leopard drawing using shading techniques and pencil skills. Finished artwork will be mount board framed—ready to gift and perfect for wildlife lovers or budding artists.

As well as taking home a beautiful piece of art, a portion of the proceeds will support our adoption of an endangered Snow Leopard through the World Wildlife Fund.

Other creative workshops are also available for all age groups. [\[Explore other workshops\]](#). Book now for a memorable Christmas gift that combines creativity, nature, and the magic of art!



Age: 7 to 13 years
Date: Saturday 21st December
Times: 2pm to 3.30pm
Cost: £20.21 per child (includes drawing minus mount board frame)
Contact: 07772 319303
Email: admin@artattheheartcic.org
Website: <https://www.eventbrite.co.uk/e/how-to-draw-snow-leopard-christmas-special-tickets-1075561355969?aff=oddtcreator>

Get Creative

Me & My Pencil: How to draw Harry Potter

What will you learn?

Create your very own Harry Potter drawing using just a pencil and eraser. Learn how to create his likeness using shading and pencil techniques, as well as simple ways of measuring and recording proportions accurately.



Need a gift for someone special? This workshop would make a lovely present for Harry Potter fans.

What will you take away?
In just one session, you'll have made a beautiful drawing that will be

mountboard framed at the end of the session. You'll have developed a toolkit of drawing skills to take away, too!

If you like the sound of this workshop, you might be interested in some of our other short courses below. Look out for the Me & My Pencil sessions where you can continue to practice and develop your pencil drawing skills.

Age: 7 to 13 years
Date: Saturday 28th December 2024
Times: 9.30am to 11am
Cost: £20.21 per child (including drawing minus mount board frame)
Contact: 07772 319303
Email: admin@artattheheartcic.org
Website: www.artattheheartcic.org/short-courses/

Me & My Pencil: How to draw Dobby (Christmas Special)

What will you learn?

Create your very own Dobby drawing using just a pencil and eraser. Learn how to create his likeness using shading and pencil techniques, as well as simple ways of measuring and recording proportions accurately.

Need a gift for someone special? This workshop would make a lovely present for Harry Potter fans.

What will you take away?



In just one session, you'll have made a beautiful drawing that will be mountboard framed at the end of the session. You'll have developed a toolkit of drawing skills to take away, too!

If you like the sound of this workshop, you might be interested in some of our other short courses below. Look out for the Me & My Pencil sessions where you can continue to practice and develop your pencil drawing skills.

Age: 7 to 13 years
Date: Saturday 28th December 2024
Times: 2pm to 3.30pm
Cost: £20.21 per child (including drawing minus mount board frame)
Contact: 07772 319303
Email: admin@artattheheartcic.org
Website: www.artattheheartcic.org/short-courses/

How to Draw: A Puppy (Christmas Special)

Looking for a unique and thoughtful Christmas gift? This workshop is the perfect present for children who love animals and art! In just one session, participants will create their own heartwarming puppy drawing, learning shading techniques and pencil skills to bring this furry friend to life.



What's Included:

- Learn drawing techniques: Develop skills to add depth, texture, and realism to the puppy's fur and expressive eyes.
- Framing option: For just an extra £4, the artwork will be mounted and ready to gift—perfect for an animal lover. Children will mount their artwork on a beautiful mountboard, ready to display or gift.
- Celebrate creativity: Spark your child's imagination and love for art while creating something personal and meaningful.

This workshop makes a great Christmas present—first, they'll enjoy the experience of creating something adorable, and then the finished, mounted drawing becomes a heartfelt gift for someone they care about. It's the perfect way to share your passion for creativity and animals this festive season. Don't miss out on this creative experience. Book now for a Christmas gift that will leave a lasting impression!

Age: 7 to 13 years
Date: Thursday 2nd January 2024
Times: 9.30am to 11am
Cost: £20.21 per child (includes drawing minus the mount board frame).
Contact: 07772 319303
Email: admin@artattheheartcic.org
Website: www.artattheheartcic.org/short-courses/

How to Draw: A Niffler (Christmas Special)

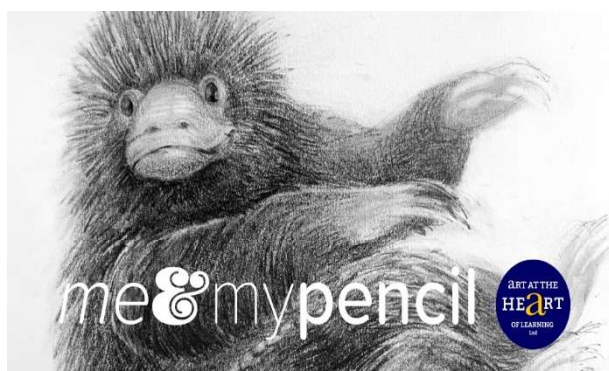
Looking for a unique and exciting Christmas activity? This workshop is the perfect opportunity for teens who love art! In just one session, young artists will create their own enchanting Niffler drawing, learning shading techniques and pencil skills to bring this mischievous creature to life.

What's Included:

- Learn drawing techniques: Develop skills to add depth, texture, and realism to the Niffler's adorable features.
- Framing option: For just an extra £4, the artwork will be mounted and ready to gift—perfect for a Harry animal enthusiast. Participants will mount their artwork on a beautiful mountboard, ready to display.
- Celebrate creativity: Spark your teen's imagination and love for art while creating something personal and magical.

This workshop makes a wonderful Christmas activity—first, they'll enjoy the experience of creating something special, and then their finished, mounted drawing becomes a heartfelt gift for someone they care about. It's the perfect way to share your passion for creativity and storytelling this festive season.

Don't miss out on this magical, creative experience. Book now for a Christmas memory that will leave a lasting impression!



Age: 7 to 13 years
Date: Thursday 2nd January 2024
Times: 9.30am to 11am
Cost: £20.21 per child
(includes drawing minus the mount board frame).
Contact: 07772 319303
Email: admin@artattheheartcic.org
Website: www.artattheheartcic.org/short-courses/



Castle Bromwich
Hall Gardens

Castle Bromwich Historic Gardens

Chester Road, Castle Bromwich. B36 9BT.

Singing Santa

Santa is feeling very jolly this Christmas and is in the mood to sing some happy songs.

Come to the Gardens to meet and singalong with Santa this December.

In each 50 minute session, Santa will entertain the children (and their grown-ups!) with a great session of songs with lots of child friendly interactions and getting into the Christmas spirit.



At the end of the session, each child will receive a present from Santa and have a chance to have a picture taken with him.

The sessions takes place in the warm and cosy tent in the Melon Ground near the entrance to the Gardens. There is seating and heat.

Each ticket also gives you access to the *whole of the Gardens for all day*.

So, as well as your Santa Singalong Session, you can spend time exploring the Gardens, and return to the courtyard for warming hot chocolate, drinks, soup, cake and snacks and a bit more shopping.

Age: 2 to 9 years (other ages are welcome).
Date: Saturday 14th and 21st December 2024.
Times: 2 slots each day - 11.30am and 1.30pm
Cost: Child ticket £6 including present, accompanying adult £5.
Website: <https://www.castlebromwichhallgardens.org.uk/calendar/>

Carols in the courtyard

Everyone is invited to our last open afternoon of the year – boost your happy hormones! We loved our scratch choir community singing in the Courtyard so much last year, we're determined to do it again.

For a short while, just forget about all that 'arranging' for the holidays and come along to boost your mood by singing along with everyone. whatever your voice!

The cafe will be open for warming drinks, hot chocolate, mulled mead and wine and there'll be snacks too.

If wet... we have cosy cover in the Melon Ground

Age: All ages welcome
Date: Sunday 22nd December 2024.
Times: 12.30pm – 3pm
Cost: No need to book. Free.
Website: <https://www.castlebromwichhallgardens.org.uk/calendar/>

Days Out

Warwick Castle

Warwick, Warwickshire CV34 6AH



Christmas at the Castle

Start a new tradition this year at Warwick Castle this Christmas.

Meet Santa, Mrs. Claus, and the mischievous elves in the stunning staterooms as they share a heartwarming story of festive hope and joy with our magical **Stories with Santa** experience. Glide across the spectacular **open-air ice rink** under the historic and iconic Guy's Tower, wander through a sparkling outdoor **light trail** featuring over half a million twinkling lights to dazzle and delight and wrap up warm for a stroll through the enchanting **Christmas food and drink village**.



Brand new for 2024, guests can revel in our all-singing, all-dancing **Traditional Family Pantomime**, spreading festive cheer to all ages.

The **Snow Queen on Horseback** offers a spectacular photo opportunity, while little ones will be enchanted by the new **Winter Princess Tower Storytime**, brimming with magical tales.

Additionally, children will be delighted by the new **Stories with Santa** story time and a special gift. To top it all off, our brand-new light trail installations will dazzle and delight everyone!

After a day filled with festive fun, why not extend magic with a **Santa Sleepover** short break in the brand-new Warwick Castle Hotel or cosy Woodland Lodges and enjoy an extra-special elf wake-up call, bespoke Santa story time, and traditional pantomime.

With all of this and more in one magical destination, you're sure to feel the Christmas spirit at Warwick Castle.



Age: All ages
Dates: up to Sunday 5th January
Cost: See website for details
Email: customer.information@warwick-castle.com
Website: <https://www.warwick-castle.com/explore-1/events/christmas-at-the-castle/>



Days Out

Stratford Town Walk

Stratford

Stratford Ghost Walk

Award-winning evening Ghost Walk in Stratford upon Avon. Walk around the “haunted” streets to discover the ancient creaky buildings seeping with sinister stories of ghosts, witches, murder and misery. The costumed guides are professional entertainers and deliver the tour in their own unique style.



Dates: Saturday 7th, 14th, 21st and 28th December 2024.

Times: 7.30pm – 9pm

Cost: £10 per adult
£5 per child (8 to 15 years).
Not suitable for under 8s

Stratford Town Walk – Christmas Day

Join the award-winning Stratford Town Walk for a festive guided walk on Christmas Day! Discover Stratford's history and fascinating relationship with William Shakespeare. Hear stories of fire, flood and plague. “Christmas wrapped” with old fashioned sayings and medieval medical cures. The Town Walk goes ahead every day of the year. Please see website for other days and times. The

walk is accessible. Dogs are welcome.

Location: Swan Fountain on Waterside, near the RST and opposite Sheep Street

Age: All ages

Times: 10.30am (walk start time). Duration 1.5 hours to 2 hours

Cost: £10 per adult
£5 per child (8 to 15 years)
Under 8 years free!

Please note: for both Stratford Town Walks the fee includes exclusive discounts at selected shops, restaurants, pubs, coffee shops and attractions.

Contact: Pre-book your tickets online or phone 07855 760377

Email: stratfordtownwalk@btinternet.com

Website: www.stratfordtownwalk.co.uk

Days Out

Knowle and Dorridge Lions Club

Dorridge Village Hall



2023 Lions Festive Walk

Knowle and Dorridge Lions are inviting one and all to join them for their Lions Festive Walk on December 27th.



The annual event will start at Dorridge Village Hall and there will be a choice of a three- or six-mile sign-posted route.

All will pass through the surrounding countryside using country lanes and public footpaths.

Young walkers will be able to join the Lions Safari Hunt on the three-mile walk, with a prize awarded for a correct entry.

Download an entry form here: <https://www.knowleanddorridgelions.com/festive-walk>
Safari entries will be taken by a simple email list if this is easier.

Walkers can register and begin their routes from 9:30 am until 1pm. In the event you cannot download them, you will be able to collect forms and maps from the Lions gazebo in front of Dorridge Village Hall.

Dogs are welcome if kept on a lead and we request that all mess is disposed of carefully. There are one or two stiles where dogs may need to be lifted.

There will be limited parking at the Dorridge Village Hall, Ye Olde Knowle Bowling Club and Dorridge Cricket Club but we would ask people to walk to the event where possible.

Age: All ages
Date: Friday 27th December
Times: 9.30am through to 1pm
Contact: Please visit our website or email for further information
Email: kanddlions@gmail.com
Website: www.knowleanddorridgelions.com



Days Out

Touchwood

Solihull B91 3GJ

Santa comes to Solihull: Christmas celebrations at Touchwood

Santa is coming to Solihull, as Touchwood's festive programme of activities and entertainment kicks off on Saturday 23rd November.

From a magical visit to Santa's Grotto, to gift shopping, enjoying live carols, and celebrating your work party with dinner and drinks, there really is something for everyone at Touchwood Solihull this festive season!

Santa is back in residence this year at his enhanced Christmas Grotto, every day from Saturday 23rd November until Christmas Eve. Eagerly waiting to receive wish lists, and with a sack full of gifts for the little ones, Santa is on hand to bring the festive cheer with parents able to treasure the moment with a photo!

The Grotto is located on Jubilee Walk. Book your ticket online so the elves can reserve your space: eventsattouchwood.co.uk.



The festive opening day will include free face painting, fun and games with Touchwood's resident DJ, Mark Field, in the run up to the Christmas lights switch on with Santa himself at 4.30pm.

Also on the 23rd November, the incredible Snow Lion will be making his debut appearance at Touchwood, with special performances at intervals throughout the day. Everyone's favourite "who-hating" character, the Grinch, will be out causing chaos out on the malls, so be sure to hold onto your Christmas gifts and bring the kids for a magical day out!

Touchwood's Christmas programme also includes the annual School Choir Competition, which gives local school children a stage to entertain shopping guests with well-known festive songs and a sprinkle of Christmas magic.



Days Out

On the festivities, Touchwood's Marketing Manager, Lucy Burnett, said: "With classic favourites such as Santa's Grotto and the Grinch Takeover, to brand new acts including an appearance from the Snow Lion, we are so excited to launch this year's festive programme of activities at Touchwood.

"Guests are invited to join in the fun, whether it's enjoying the entertainment right up until Christmas Eve, gift shopping for loved ones, or rounding off the year with dinner and drinks at one of our restaurants, we look forward to bringing the Christmas cheer!"

Dates:	Open every day from now until Tuesday 24 th December
Times:	Please see website for booking details
Cost:	£7 per child
Website:	www.christmasattouchwood.co.uk/christmas

Kenilworth Castle and Elizabethan Garden

Castle Green, Off Castle Rd, Kenilworth, Warwickshire
CV8 1NE



ENGLISH HERITAGE

Father Christmas at Kenilworth

Join Father Christmas at Kenilworth Castle this December for a magical way to start the festive season.

Father Christmas is taking time out of his busy festive schedule to tell some of his favourite seasonal stories around the Christmas tree.

After the group storytelling session, you and your children will meet the man himself, with the chance to take photographs and make memories to treasure. Father Christmas will also give every child a traditional present to unwrap.

Children of all ages are welcome. Tickets for Father Christmas cost £9.50 per child in advance, for members and non-members, and can be added at the checkout. Non-members will also need to purchase a ticket for the castle itself.



Enjoy a festive day out for all the family at Kenilworth Castle this Christmas time, with carol singing, storytelling and festive crafts!

Listen to tales of Christmases past, including the Arthurian legend of the “Gawain and the Green Knight”, and “The Christmas Cherry Tree”, and step into the

limelight to take part in our interactive Harlequinade pantomime shows.

As you explore the grounds, keep an eye out for the Christmas Wreaths crafted by local Kenilworth community groups, including Scout associations, Girl Guiding, Kenilworth Town Council and local Schools.



Then head to the stables for some Christmas crafting and carol singing from local community groups and Victorian Musicians.

Age: All ages

Dates/Times: Various (see website)

Cost: Please see website

Website: <https://www.english-heritage.org.uk/visit/whats-on/kenilworth-castle-father-christmas-2024/>

Days Out

West Midland Safari Park

Bewdley, Worcestershire DY12 1LF



Santa Safari

West Midlands Safari Park will be hosting its annual, family-favourite Christmas event again and this year, there are some brand-new, exciting features, as well as a 'relaxed' first day.

Running from now until Christmas Eve, Santa Safari is a festive day out for the whole family and this year will be even more magical, with the addition of a new enchanted elevator ride and Mrs Claus' Craft Club.

With an allocated time to see Santa, guests will be greeted in the Discovery Trail by one of his helpful Elves who will magically transport them to the North Pole. Guests can encounter some delightful characters and be dazzled by the Northern Lights.

Guests will then arrive at Santa's Enchanted Elevator - a magical journey transporting families to the heart of the North Pole.

As soon as the doors close, the elevator comes to life and will travel up, up and away on a fantastical flight across snowy landscapes and festive scenes. Finally, it will arrive at Santa's Grotto, so all that's left to do is ring the doorbell and meet the big man himself.

PR & Events Executive, Bethan Davis, said, *"Christmas is our favourite time of year at West Midlands Safari Park, as the elves have been hard at work, transforming it into a winter wonderland, with lights, hundreds of Christmas trees and even layers of snow. This year, under Santa's orders, there have been some changes in the grotto, including the introduction of the enchanted elevators, which really are spectacular and a truly unique way of travelling to Santa's home!"*

"What's even more exciting, is that Mrs Claus will be joining us this year too, telling stories to children and helping them make reindeer food in Mrs Claus' Craft Club. Families can even help make Christmas presents for our animals and we will be sharing their gifts being given to them on our social channels, over the festive period."



Once guests exit the enchanted elevator, they will be able to meet the big man himself, where they can tell him what's on the top of their wish list and a friendly elf will take a picture of the experience for the family to take home.

After meeting Santa, children can pick their own present in the Elves' Workshop and collect their photo. With a wide selection of gifts to choose from, children will be spoiled for choice.

Guests can also head to one of the festive food outlets, to pick up their complimentary festive treats, which include a mince pie or cookie and a drink.

Mrs Claus will be making appearances at intervals throughout the day in her Craft Club, where guests can make reindeer food to take home and create gifts for the Park's animals.

Days Out

They can also take part in a competition to write a letter to Santa and post it in the talking post-box, to be in with the chance of winning a Gold Annual Pass for four people.

Also included is the four-mile Safari Drive, Safari Walk areas, Explorers' Play Park and all the animal talks and encounters.

For more information on prices and to book visit our website.



Age: All ages
Dates: Friday 22nd November to Sunday 24th December 2024 (Santa Safari).
Times: Please see website for details
Cost: Tickets can be booked in advance via the Park's website, where guests can also see the calendar of events
Email: info@wmssp.co.uk
Website: <https://www.wmssp.co.uk>

Days Out

Lichfield Cathedral at Christmas

Lichfield Cathedral, Lichfield

Website: <https://www.lichfield-cathedral.org/what-s-on/whats-on-home>

Christmas Tree Festival

Come and see a wonderful festive array of real Christmas trees decorated by local businesses, schools and charities.

Dates: from 30th November to Sunday 5th January 2025.
(open during visiting opening hours)
Cost: Free entry, donations welcomed.



Carols Around the Tree

Enjoy a short time of joy and celebration with some popular readings and Christmas Carols, featuring a live brass band.

Date: Saturday 21st December
Times: 2pm and 3pm
Cost: Free service, donations welcomed

Family Crib Service

Our popular children's nativity service. Come dressed as a character from the story of the Nativity!

Date: Tuesday 24th December
Times: 3pm
Cost: Free entry, donations welcomed



Christmas Light Show

Join us for a light spectacular by acclaimed animation team: Illuminos.

Enjoy a spectacular Christmas Light Show around the Close, and on the front of the Cathedral, listen to popular carols, and head inside to soak up the atmosphere of this special time of year.

This year's light show is themed with the 12 Days of Christmas in mind – with a Lichfield Cathedral twist, of course.

Includes after-hours access to the Christmas Tree Festival, Gift Shop and Crib. A perfect evening out for family and friends of all ages.

We usually advise visitors to allow around an hour for the full experience.

Dates: Monday 16th – Wednesday 18th December and
Friday 20th – Sunday 22nd December.

Times: From 5.30pm

Cost: £12.50 per adult ticket

£10 per child ticket

£40 per family ticket

Under 2s go free

Website: <https://www.lichfield-cathedral.org/what-s-on/lightshow>



New for 2024: Relaxed Sessions

Dedicated sessions for anyone who would benefit from a more relaxed and supportive experience. Featuring the two outside light shows only, with limited numbers and quieter volumes.

These are outdoor-only sessions.

Please ensure you have read the relaxed session

FAQs which include our Terms and Conditions ahead of booking:

<https://www.lichfield-cathedral.org/downloads/whats-on/2024-christmas-light-show-relaxed-showings-faq.pdf>

Dates: Thursday 19th December

Times: From 5pm

Cost: £6.50 per adult ticket

£5 per child ticket

Under 2s go free

Website: <https://www.lichfield-cathedral.org/what-s-on/lightshow>



Baddesley Clinton

Rising Lane, Baddesley Clinton, Warwickshire
B93 0DQ

Traditional Christmas at Baddesley Clinton

Join us between 30th November 2024 and 5th January 2025 for a traditional Christmas at Baddesley Clinton.



Get lost in the cosy atmosphere and warmth of a family Christmas. Come and sit by the fire with a sparkling tree scattered with presents underneath.

Both the house and grounds will be featuring the celebration of Christmas tradition's theme and this will be mirrored throughout the property with decorations and events inside and out. In the grounds, the Vinery will be celebrating Christmas mulled wine traditions. The Summerhouse in the Walled Garden is featuring the tradition of decorating with Evergreens and presents.

Don't forget the Barn Restaurant will be open serving lots of Christmas treats.

Age: All ages
Dates: From now up until Sunday 5th January 2024
Times/Cost: Please see website
Website: www.nationaltrust.org.uk/visit/warwickshire/baddesley-clinton

Packwood House

Packwood Lane, Lapworth, Warwickshire B94 6AT

A 1920s Christmas at Packwood

It's a Christmas Day in the 1920s, the dining table is set, the presents are ready to be opened and there is a party in full swing. Join us this Christmas at Packwood House to explore as guests and personal friends of the Ash Family.



The house and grounds will be celebrating a 1920s theme this year in honour of the Ash family Christmas parties with decorations being fully up from 30th November 2024 to 5th January 2025.

Indulge in a delicious hot chocolate and mince pie from the café which will be serving a selection of hot and cold food, drinks and light snacks. Indoor and outdoor seating will be available as well as takeaway – perfect for refreshments after a stroll around the gardens in the winter sun.

Age: All ages
Dates: From now up until Sunday 5th January 2024
Times/Cost: Please see website
Contact: 01564 787981
Website: www.nationaltrust.org.uk/visit/warwickshire/packwood-house

Brum's Christmas Reindeer Trail

Birmingham City Centre

Join us for a magical reindeer trail across Birmingham city centre!

Santa's nine reindeer are visiting Birmingham this Christmas as part of a magical sculpture trail, brought to the city centre by Central BID.



Using a special map to locate all nine city centre locations, families can track down Dasher, Dancer, Prancer, Vixen, Comet, Cupid, Donner, Blitzen and, of course, Rudolph, for selfies and to support Birmingham Children's Hospital Charity at the same time.

Brum's Christmas Reindeer Trail has been brought to the city by Central BID Birmingham, the Business Improvement District for the central retail and leisure area, in partnership with arts trail experts Wild in Art.

Four of the sculptures have been sponsored by trail partners Colmore BID, the Frankfurt Christmas Market, Hortons' Estate, Birmingham Children's Hospital Charity and Ice Skate Birmingham.

Brum's Christmas Reindeer Trail launches on 6th November 2024 and continues throughout the festive period until 6th January 2025.

The colourful reindeer will be in on display in locations such as Great Western Arcade, Piccadilly Arcade, Christmas in Cathedral Square Market, Selfridges, Grand Central, the Frankfurt Christmas Market, Ice Skate Birmingham, Corporation Street and at The Mailbox. Each reindeer plinth features a QR code to enable families to donate and support the vital work of Birmingham Children's Hospital Charity.

Download your colourful trail map here: <https://www.centralbid.co.uk/reindeer-trail/#story> to join us on an exciting Christmas Reindeer Hunt through central Birmingham!



- ❄️ 9 Colourful Reindeer sculptures across central Birmingham.
- ❄️ All decorated by local and national professional artists.
- ❄️ Trail to support Birmingham Children's Hospital Charity.



Dates: From now until Monday 6th January 2024
 Website: <https://www.centralbid.co.uk/reindeer-trail/#story>

Days Out

Birmingham Botanical Gardens

Westbourne Road, Edgbaston, Birmingham B15 3TR

Luminate Winter Light Trail - Birmingham

We're pleased to announce the return of Luminate - a magical light trail that will lead you around our historical gardens in a new light.

Journey through the Gardens transformed by mesmerising installations, projections, music and glowing tunnels of light.



This year's trail will cast a new glow on the Gardens' Grade II* listed landscape, celebrating nature and creativity in every twist and turn. Wander at your own pace, taking in scenes of gentle glows, twinkling lights, and magical displays.

A timeless experience to be enjoyed by all, young and old alike – make memories that will last a lifetime

There will be food traders selling:

- Tasty treats
- Festive drinks
- Hot and cold beverages
- Don't forget to save some room to toast marshmallows in the Gardens!



This trail is outside, so please dress for the weather!

The route is accessible via wheelchair, and disabled toilets accessible on site.

Car parking is available at the Gardens on a first-come-first served basis. Limited blue badge parking is also available.

Tickets must be pre-booked online in advance!

Dates: From now until 1st January 2025
Times: 4.30pm to 8pm
Cost: Please see website
Contact: 0121 454 1860
Website: www.birminghambotanicalgardens.org.uk

Frankfurt Christmas Market Birmingham

Birmingham City Centre

Birmingham's Frankfurt Christmas Market is a firm fixture in the city's annual calendar and a massive favourite with both residents and visitors to the city from across the UK and Europe. Birmingham comes alive every winter with the arrival of the Market, a clear sign that Christmas is just around the corner. The stalls on Victoria Square and along New Street offer something for everyone.

The largest authentic German Christmas market outside of Germany or Austria Birmingham's Frankfurt Christmas Market offers a large range of traditional good and gifts and a selection of tempting food and drink.



A great place to meet up with family and friends and enjoy the live music programme on Victoria Square. And whilst you're here why not pick up some presents for your family and friends with everything from handcrafted wooden decorations and delicate glass baubles to in the form of the ever-favourite crystal lamps, Sounds of Nature, toys, jewellery and much more besides!

Dates: Friday 1st November to Tuesday 24th December

Times: Monday to Thursday (11am to 9pm)

Friday (11am to 9.30pm)

Saturday (10am to 9.30pm)

Sunday (10am to 9pm)

Website: <https://www.thebfc.co.uk/birminghams-frankfurt-christmas-market/>

National SEA LIFE Centre Birmingham

The Water's Edge, Eleven Brindley Place, Birmingham B1 2HL

Santa's Grotto Experience

From 30th November to the 24th of December, sea explorers will be able to marvel at over 2,000 amazing creatures including jaw-some sharks, cheeky gentoo penguins and the UK's first and only sea otters, Ozzy and Ola before entering our glittering grotto where Santa and his cheeky elves will be waiting in their magical winter wonderland to say hello and find out what's on the top of those Christmas lists this year!

Every child who visits Santa in his grotto will be given a present to take home and enjoy!

Tickets to see Santa is an additional charge, Please see website for further details.

Cost: Please see website

Dates: up to Tuesday 24th December

Website: www.visitsealife.com/birmingham

The Snowdome

Leisure Island, River Drive, Tamworth, B79 7ND

Santa's Winter Wonderland at the SnowDome

Discover the magic of real snow this Christmas at Santa's Winter Wonderland at the SnowDome – including 3 festive experiences!

From 16th November to 5th January, enjoy a festive extravaganza with real snow, real animals, and an ALL-NEW Christmas show for the whole family.



Venture through Santa's snow trail and feel the excitement of real snow as you glide on a snow sledge, race down the summit slide, marvel at the festive light displays, experience the magic of falling snow, and enjoy a family snowball game!

Santa himself will then guide visitors on a magical journey in the brand-new mini pantomime – Jack and the Beanstalk. Meet Rudolf and friends as you climb the towering beanstalk, outwit the giant and embark on a heartwarming journey of bravery, friendship, and dreams.

Afterwards, take a stroll through Santa's Christmas village, make new furry friends, enjoy a ride on the classic children's carousel, and write and post your own letter to Santa.

Age:	All ages
Dates:	From now up until Sunday 5 th January 2024
Times/Cost	Please see website
Contact:	03448 000011 Guest Services & Bookings
Email:	guestservices@snowdome.co.uk Guest Services & General Enquiries
Website:	https://www.snowdome.co.uk/santas-winter-wonderland/

Days Out

Twycross Zoo

Burton Road, Atherstone, CV9 3PX

Twycross Zoo's Christmas at The Gruffalo Discovery Land

Christmas is coming to Twycross Zoo and families are invited to experience the magic of The Gruffalo and The Gruffalo's Child like never before at The Gruffalo Discovery Land! Between 16th November - 24th December 2024, visitors can step into a world where the magic of Christmas meets the wonders of The Gruffalo as the zoo's unique attraction is transformed into a festive woodland experience.



The 4-acre land, complete with animatronics, film clips, and much more, offers visitors an immersive experience in which they can enter the world created by Julia Donaldson and Axel Scheffler.

This year, the zoo's new Christmas experience will add an extra touch of magic, taking families on an adventure through the deep, dark wood, where beloved characters from The Gruffalo story are brought to life along its festive themed Christmas trail.

Along the trail, visitors will encounter the real-life animals that inspired The Gruffalo and The Gruffalo's Child stories, including Fox, Owl, Snake, and maybe even the Big Bad Mouse.

Visitors to this year's event will not only have the chance to meet The Gruffalo, but they will also be among the first in the UK to meet The Gruffalo's Child — an experience that is exclusively available at Twycross Zoo this Christmas.

Plus, any budding explorers can get their hands on a Gruffalo Ranger certificate as the zoo's Gruffalo Ranger Training experience has had a festive makeover and can be completed along the Christmas trail.

But the fun doesn't stop there! Further along the Christmas trail, visitors can enjoy the zoo's brand-new Santa Show before a meet-and-greet with Santa and his elves — providing the picture-perfect moment for families to capture those wonderful memories.

Mrs Claus will also be on hand to give every child their very own FREE Gruffalo toy to take home, and if all of that wasn't enough to get you in the Christmas spirit, there will be a series of Christmas craft workshops and a selection of festive food and drink stalls.

Days Out

Coventry Transport Museum

Millennium Place, Hales Street, Coventry CV1 1JD

Visit Santa: Vintage Sleigh Ride Experience

Wander through a magical winter wonderland and snowy scenes before taking a ride on Coventry famous and enchanting vintage sleigh, pulled by two trusty reindeer. Your next stop? Lapland. Write your Christmas wish list, meet Santa in his festive grotto, tell him your Christmas wishes and collect your bespoke gift from a North pole elf.



What to Expect This Year:

- Vintage Sleigh Ride
- Meet Santa
- Visit Santa's workshop for some fun festive activities
- Free admission to the museum for the day
- Ticket holders will receive a special book, co-created with Aaron Ashmore (excluding babes in arms without a separate ticket and accompanying adults)

Dates: Friday 22nd November – Monday 23rd December 2024

Times: 10.30am – 4pm (timeslots every 30 minutes).

Cost: From £10 depending on the date of the session

Website: <https://transport-museum.com/events/1550/visit-santa-vintage-sleigh-ride-experience>

Early Years Sleigh Experience

Especially designed for our very youngest visitors, our Early Years Sleigh Experience invites you and your little ones to enjoy the magic of Coventry's famous and enchanting vintage sleigh in a calmer pace.

Wander through a magical winter wonderland and snowy scenes before stepping onto the Sleigh, pulled by two trusty reindeer. Then, meet Santa in his festive grotto, tell him your Christmas wishes and collect your bespoke gift from a North pole elf. Follow up the sleigh ride with a round of super festive sensory play in our Mini Museum Engineers inspired Santa's Workshop.

Activities are designed with early years children in mind and numbers are limited to allow for the space to not become overwhelming for visiting babies, toddlers and their grown-ups.



Dates: Wednesday 4th, 11th and 18th December 2024

Times: Timeslots at 10am, 10.30am, 11am, 11.30am, 12pm and 12.30pm.

Cost: From £15 per child (includes 2 accompanying adults).

Website: <https://bookings.cvlife.co.uk/santas-sleigh/types>

Days Out

Tinker | Make | Play Engineers: Winter

Escape the cold and join our winter themed Tinker | Make | Play workshop space to choose from a variety of activities. Take apart broken objects using tools, make a machine that could help in winter and play away in a winter play area.

At Coventry Transport Museum, we believe it all starts with curiosity, perseverance, and creativity. In proper engineering style, we have come up with the perfect formula for a workshop that will help develop those engineering skills.



Dates: Friday 27th & Saturday 28th December 2024

Friday 3rd & Saturday 4th January 2025.

Times: 10am – 3pm

Cost: Drop in session, free with admission.

Website: <https://transport-museum.com/events/1584/tinker-make-play-winter>

Herbert Art Gallery and Museum

Jordan Well, Coventry CV1 5QP

Playful Paper Winter Crafts

Join us for a relaxing winter gathering with your family. Create soft snowy paper snowflakes, colourful paper polar bear sculptures, or explore other wintry possibilities. We'll use various paper types and both classic and modern folding techniques. Bring your creations to life with vibrant colours and embellishments.



Create soft snowy paper snowflakes, colourful paper polar bear sculptures, or explore other wintry possibilities.

Take home these delightful art decorations or share them as keepsakes for loved ones. We provide simple designs for younger children and more challenging options for older children and adults, ensuring there's something enjoyable for everyone.

Spaces are available on a first come, first serve basis.

Ages: For ages 3 years upwards but all are welcome

Dates: Friday 27th, Saturday 28th and Tuesday 31st December 2024

Times: 10.30am to 3.30pm (drop-in sessions)

Cost: £2.50 per child (under 3s free)

Website: <https://www.theherbert.org/whats-on/1832/playful-paper-winter-crafts>



*Wishing all our families a Merry Christmas
& Happy New Year!*

