

**FOR EXTENT OF DIVERSION
PLEASE REFER TO PLAN
"Homer Road, Solihull - Road
closure (Phase 7) (Diversion)"**

EXCALON TRAFFIC MANAGEMENT

NOTES

1.

ALL SIGNS ARE AS PER CHAPTER 8.

2.

DISTANCE BETWEEN SIGNS ARE NOT TO SCALE AND ARE FOR LAYOUT PURPOSES ONLY.

3.

SIGNS SHOULD BE POSITIONED IN A SAFE WORKING SPACE.

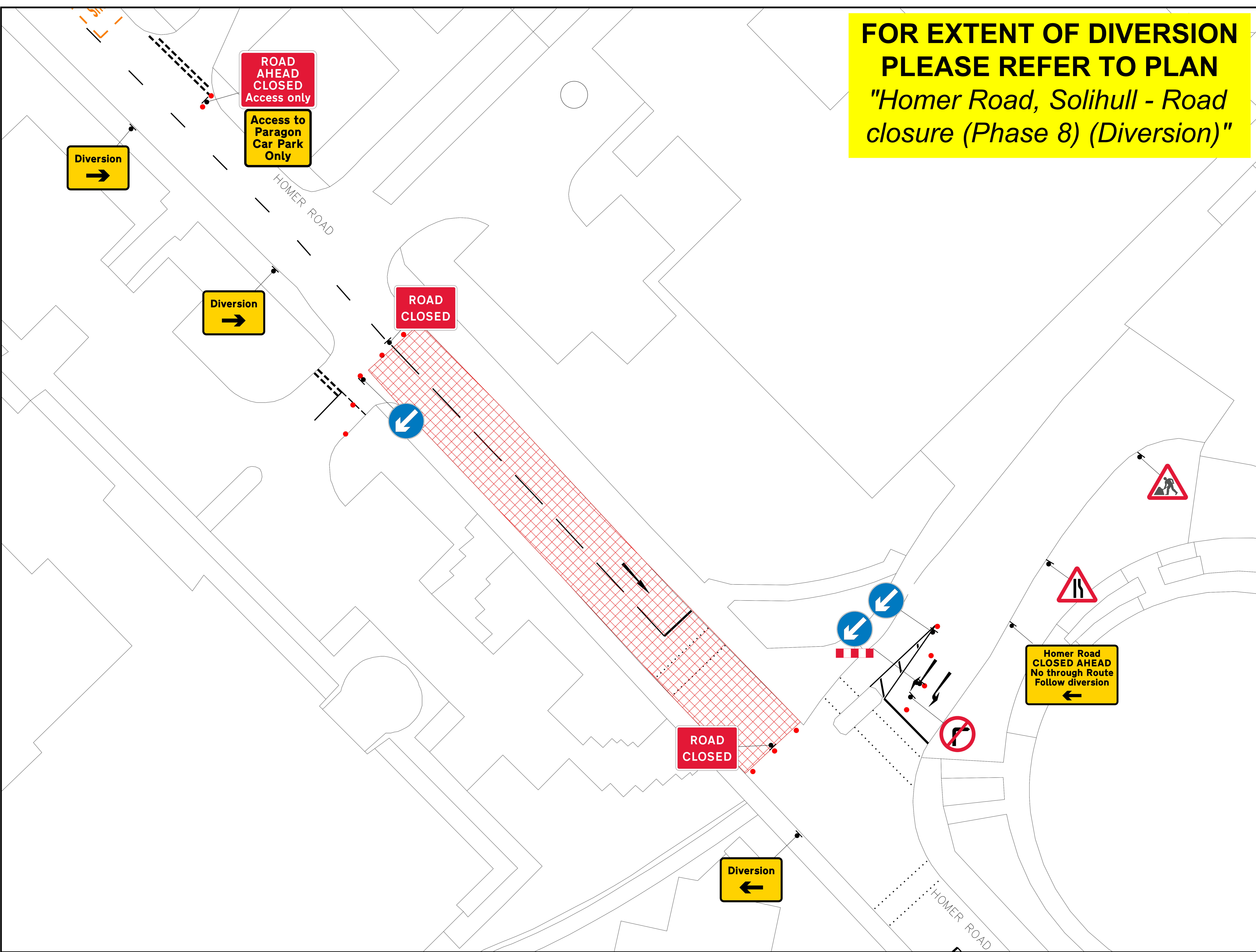
KEY

SIGN POSITION AND DIRECTION

CONE

EXTENT OF ROAD CLOSURE

EXCALON HEAD OFFICE
EXCALON YARD,
2 DUNCAN STREET,
SALFORD,
M5 3SQ



EXCALON TRAFFIC MANAGEMENT

NOTES

1.

ALL SIGNS ARE AS PER CHAPTER 8.

2.

DISTANCE BETWEEN SIGNS ARE NOT TO SCALE AND ARE FOR LAYOUT PURPOSES ONLY.

3.

SIGNS SHOULD BE POSITIONED IN A SAFE WORKING SPACE.

KEY

SIGN POSITION AND DIRECTION

CONE

EXTENT OF ROAD CLOSURE

EXCALON HEAD OFFICE
EXCALON YARD,
2 DUNCAN STREET,
SALFORD,
M5 3SQ

DRAWN BY: KC

DATE: 20/01/25

CHECKED BY: ML

DATE: 20/01/25

APPROVED BY: ML

DATE: 20/01/25

DRAWING No. PHASE 8

REVISION 0

DO NOT SCALE FROM THIS DRAWING