

# Solihull Parents' Network Autumn 2025 Family Events



*Images courtesy of (from clockwise) Hatton Adventure World, Castle Bromwich Hall and Gardens, West Midlands Safari Park and Hatton Adventure World.*

Solihull Family Information Service  
Email: [familyinfo@solihull.gov.uk](mailto:familyinfo@solihull.gov.uk)  
Web: [www.solihull.gov.uk/familyinfo](http://www.solihull.gov.uk/familyinfo)

**Balsall Common Library**  
**283 Kenilworth Road, Balsall Common CV7 7EL**

### **Creepy Creations for Halloween**

Join us on Thursday 30th October, and get crafty this Halloween with a morning of horribly creative fun at the library! No need to book, just turn up (feel free to come in your scariest costumes!)

Age: 4 to 11 years  
 Dates: Thursday 30th October 2025  
 Times: 10.30am – 12.30pm  
 Cost: Free  
 Contact: 01676 532590  
 Email: [balsallcommonlibrary@solihull.gov.uk](mailto:balsallcommonlibrary@solihull.gov.uk)  
 Website: <https://www.solihull.gov.uk/library-events>



**Meriden Library**  
**Arden Cottage, The Green, Meriden, Solihull, CV7 7LN**

### **Creepy Creations for Halloween Craft Drop-in**

Get crafty this Half Term with our drop in craft table, available during opening hours with some horribly creative fun at the library! No need to book, just turn up (feel free to come in your scariest costumes!)

Age: 4 to 11 years  
 Dates: Monday 27th October (10.30am-12.45pm and 2.15pm – 4.30pm).  
 Tuesday 28th October (10.30am – 12.00pm)  
 Thursday 30th October (10.30am – 12.00pm)  
 Cost: Free no need to book just turn up.  
 Contact: For more information call 01676 522717  
 Email: [libraries@solihull.gov.uk](mailto:libraries@solihull.gov.uk)  
 Website: <https://www.solihull.gov.uk/library-events>



**Hampton in Arden Library**  
**39 Fentham Road, Hampton-in-Arden, B92 0AY**

### **Spooktacular Crafting for Halloween**

Get crafty this Halloween with an afternoon of creative fun at the library! No need to book, just turn up.

Age: 4 to 11 years  
 Dates/Times: Tuesday 28th October (2.30pm – 4.30pm).  
 Thursday 30th October (2.30pm – 4.30pm)  
 Cost: Free no need to book just turn up.  
 Contact: For more information call 01675 442629  
 Email: [libraries@solihull.gov.uk](mailto:libraries@solihull.gov.uk)  
 Website: <https://www.solihull.gov.uk/library-events>

**Planet Ice**  
**Hobs Moat Road, Solihull B92 8JN**



### **3 or 5 Day Learn to Skate Camps**



Our camps include a 30-minute group lesson, breakfast and a hot drink meal deal and public skate after your lesson to practice your skills.

Age: Everyone  
Dates/Times: Mondays to Fridays (through half term)  
Times: Please see website  
Cost: £56 per 3 day course  
£71 per 5 day course  
Contact: Pre-book via our website or by calling 0121 742 5561  
Website: [www.planet-ice.co.uk](http://www.planet-ice.co.uk)

### **October Half-Term Public Ice Skating**

Our public ice skating sessions continue to run throughout October half term 2024. Whether you're a seasoned skater or a newcomer looking to experience the joy of gliding on ice, Planet Ice Solihull is the place to be. Join us for a day of ice skating fun and create wonderful memories with your loved ones. See you on the ice!



Please note: all sessions must be pre-booked online.

Age: Adults and children of all ages  
Dates/Times: Friday 24<sup>th</sup> October to Monday 4<sup>th</sup> November 2024 (Also open all year round).  
Times: Please see website  
Cost: £15.20 per person (non-Ice Card Members)  
£10.40 per person (Ice Card Members)

Please note: Ice Card Members receive double discounts saving £4.80 off ice skating!

Contact: Pre-book your tickets via our website or call 0121 742 5561

Email: [solihull@planet-ice.co.uk](mailto:solihull@planet-ice.co.uk)

Website: [www.planet-ice.co.uk](http://www.planet-ice.co.uk)

Stay Active



## **Trick or Treat & Friday Night Fright** 2 for 1 Halloween Skates

Take advantage of our spook-tacular 2 for 1 Ice Skating offer available exclusively online! Book now and bring a friend for a chillingly good time on the ice! Whether you want scary or some sweet treats, there is something for everyone this Halloween at Planet Ice

Date: Friday 31st October  
Cost: See website for details  
Email: [solihull@planet-ice.co.uk](mailto:solihull@planet-ice.co.uk)  
Website: [www.planet-ice.co.uk](http://www.planet-ice.co.uk)



## **The Wave** New Union Street, Coventry CV1 2PS

The Wave, a UK award-winning, indoor waterpark making a splash in the heart of Coventry!



From high-speed slides and a fun-packed splash zone to the exhilarating Wave Pool and relaxing Lazy River... There's something for thrill, spill and chill seekers of all ages to enjoy

Dates: Friday 24<sup>th</sup> October – Sunday 2<sup>nd</sup> November 2025  
Times: Daily  
Cost: £56 per family ticket (2 adults, 2 juniors... under 12)  
Contact: Please see website for booking details  
Website: [www.thewavecoventry.com](http://www.thewavecoventry.com)



## Warwickshire Wildlife Trust

**The Parkridge Centre**  
**Brueton Park, Warwick Road, Solihull,**  
**Warwickshire, B91 3HW**



### **Halloween in the Woods**

Come to our spooky woods and play some games. You will make some magic potions and learn which animals are brave enough to be out and about on Halloween.

This session is aimed at primary school aged children. Please be aware we head out in all weathers, so please dress appropriately.

Meeting point: At the Mud Kitchen

Age: Everyone

Date: Monday 27<sup>th</sup> October 2025

Times: 11.15-12.15

Cost: £6 per child – each paying child includes one accompanying adult

Contact: 02476302912

Email: [education@wkwt.org.uk](mailto:education@wkwt.org.uk)

Website: <https://www.warwickshirewildlifetrust.org.uk/events>

### **Campfire fun and hot chocolates (with toffee apples)**

We'll be cooking on our campfire and making hot chocolate and have a go at making your own toffee apple slices.

This session is aimed at primary school aged children. Please be aware we head out in all weathers, so please dress appropriately.

Meeting point: At the Mud Kitchen

Age: Everyone

Date: Wednesday 29<sup>th</sup> October 2025

Times: 11.15-12.15

Cost: £6 per child – each paying child includes one accompanying adult

Contact: 02476302912

Email: [education@wkwt.org.uk](mailto:education@wkwt.org.uk)

Website: <https://www.warwickshirewildlifetrust.org.uk/events>



**Reynolds Cross School**  
**Olton, Solihull, B92 7ER**



### **Pumpkin Patch and Spooky Activities (Reynolds Cross School)**

#### **Fun activities for families who have children with Special Educational Needs & Disabilities.**

A special pumpkin patch event for families on. Our pumpkin patch is back! Choose your pumpkin from our man-made patch and carve them onsite. We will have a spooky bouncy castle, Halloween theme sensory play, meet some scary animals with our animal man, rest in our sensory tent, enjoy a pony ride (£5 charge on the day) and hot food & drink available to purchase after all that fun.



This event always sells out fast so don't delay and book today.

Dates: Saturday, October 18  
Times: 10:30, 12pm, 1:30pm, 3pm  
Cost: Child £10.00, Siblings £5.00  
Website: <https://senzzone.co.uk/>

### **Bonfire theme party**

Bonfire disco party with the Crazy Crew. The entertainers from Crazy Crew will be playing games & doing action songs. We will also have a decorating biscuit station to create some firework biscuits to enjoy. Bonfire themed sensory play and our sensory tent will be out too! Please note there will be loud music and disco lights throughout this session.

Dates: Saturday 1<sup>st</sup> November  
Times: 10am -12pm  
Cost: £9:50 (£1.50 booking fee)  
Website: <https://senzzone.co.uk/>

**Planet Ice Solihull**  
**Hobs Moat Road, Solihull, B92 8JN**



### **Inclusive Ice Skating**

Our Inclusive Skate sessions provide a welcoming and accessible environment for disabled individuals to enjoy the ice. With a calm, sensory-friendly atmosphere and free skate hire and skating aid for the inclusive skater, this session is designed to ensure a fun and comfortable experience for all.



Age: All Ages from 3+ Disabled individuals and their carers  
Dates: Tuesdays  
Times: 9.30am – 10:30am  
Cost: £10.00 Carer is Free  
Website: [www.planet-ice.co.uk](http://www.planet-ice.co.uk)

**\*For Inclusive / quieter Firework displays please see Solihull Round Table and Wythall Community Association on pages 23/24.**

SEND

**Becketts Farm**  
**Heath Farm, Alcester Road, Wythall, Birmingham, B47 6AJ**



### **Pumpkin Extravaganza**

The Pumpkin Queen and Bella, the Becketts Farm Witch, are returning to Becketts Farm this October half-term for pumpkin carving, spooky spells and plenty of unforgettable Halloween fun!

Magic and mischief await with our enchanting pumpkin carving experience. Join the Pumpkin Queen and Bella for a spooky pumpkin party, filled with jack-o'-lantern carving and thrilling theatre. Young witches, witches and pumpkin lovers will be entertained and amazed by our trained actors. Adventure Awaits!

Join the charming Pumpkin Queen as she welcomes her royal guests (that's you!) to the palace for the ultimate Halloween celebration. There's just one problem – the party preparations are behind schedule! With spooky season in full swing, the Queen has a clever idea: call on her magical friend, Bella, the Becketts Farm Witch, for help!



With a little audience participation and a sprinkle of magic, Bella has a spellbinding solution to get the party back on track!

### **Pumpkin Carving Extravaganza**

It's time to roll up your sleeves because the Queen and Bella need your help to carve the perfect Halloween pumpkins.

Children will choose their own pumpkins from the royal patch and take part in a hands-on carving session where they'll be guided step-by-step to create a masterpiece!



### **Party with Halloween Royalty**

Once the carving is finished, the palace comes to life with spooktacular sounds and lights – it's time to sing and party like royalty, showing off your beautifully carved pumpkins.

Capture the Magic!

Don't forget your cameras! This is a Halloween event you'll want to remember. Pose for photos with the Pumpkin Queen and Bella Beckett as you enjoy your magical, interactive experience.

Dates: Friday 24<sup>th</sup> October – Friday 31<sup>st</sup> October 2025  
Times: Sessions last 1 hour and start times are: 9:30am, 10:45am, 12pm, 1:45pm and 3pm.  
Cost: £14.95 per child including a pumpkin (under 2's free – with siblings if not participating and will not receive a pumpkin.)  
Adults Free – 1 guardian per 2 children for safety reasons.  
Contact: Please see website for booking details  
Website: <https://www.beckettsfarm.co.uk/special-events/pumpkin-extravaganza/>

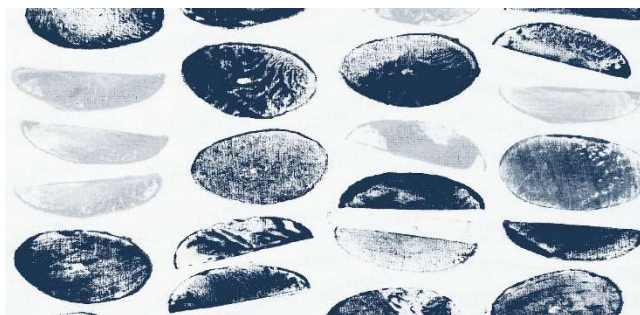


**Herbert Art Gallery & Museum**  
**Jordan Well, Coventry CV1 5QP**

**Herbert**  
Art Gallery & Museum

Get Creative

**Plot, Print & Play: Transform our studio into a giant allotment plot!**



This October half term, help us transform the studio into one magnificent communal allotment plot! Working together with your families and friends, you'll create spectacular wall displays of vibrant vegetable and fruit prints across large sheets of paper. Drawing inspiration from Leah Gordon's Coventry Biennial exhibition, we're exploring themes of shared spaces,

food, common land, and folk traditions through art making. Just as plants and animals have always featured prominently in folk art, we're inviting you to add your artistic voice to this growing garden of creativity and community connection.

Leave one artwork with us to become part of our evolving display and create additional pieces to take home. Visit multiple times throughout the week to try different activities and watch the collaborative masterpiece bloom!

**Fresh Print Tote Bags | Saturday 25th, Tuesday 28th, Wednesday 29th October:**

Design your very own cotton tote bag using fresh vegetables and fruit as printing tools.

Create repeating patterns or bold statement designs, then add affirmations or favourite phrases with Posca pens. Take home your naturally printed bag to carry treasures and show off your creativity!

**Botanical Press Prints | Thursday 30th, Friday 31st October & Saturday 1st November**

Create stunning one-off prints using a collection of hand-picked autumn flora from our Herbert gardens. This fine art technique of mono printing uses Perspex to transfer unique designs onto black or white card. No two prints are ever alike, and they are perfect for framing or displaying at home.

Embrace this colourful autumnal season with art, inspiration, and family fun at the Herbert Art Gallery!

**Meadow Arts Family Workshop inspired by Leah Gordon: Monument to the Vanquished Peasant | Thursday 30th October | 11am - 3pm**

Get hands-on this half term in the studio with a fun and imaginative drop-in art workshop for families. Inspired by Leah Gordon's powerful exhibition Monument to the Vanquished Peasant, children will create artworks to take home, exploring themes of land, community and storytelling through art. Hosted in Herbert's Creative Studio, this session is part of a full day of art activities for all ages, led by the Meadow Arts and Herbert Art Gallery and Museum teams.

Age: All ages

Date: Drop in between activity times stated above

Times: Various

Cost: £2.50 Per Child, Under 3's Free

Website: <https://www.theherbert.org/whats-on/1893/plot-print-play-arts-crafts>



### **Doze under Dippy**

Come and experience a truly unique family experience with our Doze Under Dippy sleepovers.

During the event you will:

- Take part in torch light tours of the museum
- Get creative with arts and crafts
- Discover fun facts about Dippy and get hands on with our fossil collection
- Wind down for a short film in our studio
- Stretch, shake, and play with a roaring dino-themed start to the day



Lights go out at 10.30pm and then it's time to settle down to sleep. Breakfast is served between 7am to 8am. Departure from the museum is at 9am.

Age: 6 years and above

Date: Saturday 25<sup>th</sup> October

Times: 6.30pm – 9am

Cost: £50 per person

Website: <https://www.theherbert.org/whats-on/1767/doze-under-dippy>



### **Newlands Bishop Farm**

**Berry Hall Lane, Catherine De Barnes, Solihull, B91 2RY**

### **Pumpkin Patch**

Celebrate the autumn season at Newlands Bishop Farm's Pumpkin Patch Event! Join us on weekends and weekdays for a fun-filled experience where you can pick the perfect pumpkin, enjoy seasonal activities, and embrace the festive atmosphere of our picturesque farm.

Pick Your Own Pumpkin: Wander through our charming tipi field to and choose your favourite pumpkin to take home. With a variety of sizes and shapes, you'll find the perfect one for carving, decorating, or baking. (Pumpkins sold separately)



Family-Friendly Activities: Enjoy a range of autumn-themed activities suitable for all ages. such as pumpkin carving and a scavenger hunt around the animal walkway there's something for everyone to enjoy.

Meet the Farm Animals: Spend time with our friendly farm animals, including goats, sheep and more. It's a great opportunity for kids and adults alike to interact with.

**Seasonal Refreshments:** Warm up with delicious seasonal treats and beverages from Berry's Cafe. Enjoy hot chocolate, and a selection of homemade goodies.

**Scenic Farm Views:** Take in the beautiful autumn scenery of Newlands Bishop Farm. Capture memorable moments with your family and friends in our picturesque setting.

All proceeds from the event support the Family Care Trust, helping us continue our work within the community.

Age: All Ages  
 Dates: 18<sup>th</sup> – 31<sup>st</sup> October  
 Times: 9am-3pm  
 Cost: Adults and Children over 1 Year £3.67  
 Family Ticket (up to 4 people) £12.58  
 Contact: 0121 711 2939  
 Website: <https://www.newlandsbishopfarm.co.uk/events-at-the-farm/>

**Touchwood**  
**Homer Road, Solihull, B91 3GJ**

**TOUCHWOOD**

### **Touchwood School of Magic & Wizardry**

Calling all young witches and wizards!  
 From Saturday, 25<sup>th</sup> October, the Touchwood School of Magic & Wizardry is opening its doors for one week only, and we need new students to help defend the school and banish the evil Wizard Doomhaven!



Hidden away in the caretaker's cottage, budding magicians will enjoy a spellbinding journey:

- \* Sorting Ceremony: Don your cloak and be sorted into your house
  - \* Wand Crafting: Make your very own wand and learn your first spell
  - \* Potion Slime Lab: Brew a magical (and slimy!) potion to take home
  - \* Broomstick Basics: Hop on your training broom for games and flying fun
- Every graduate will receive their very own Wizard Broomstick Licence Certificate!

Age: All ages  
 Date: 25<sup>th</sup>, 26<sup>th</sup>, 29<sup>th</sup>, 30<sup>th</sup>, 31<sup>st</sup> October and the 1<sup>st</sup> and 2<sup>nd</sup> November  
 Times: 11am, 11.45am, 12.30pm, 1.30pm, 2.15pm & 3pm.  
 Cost: £5.00  
 Website: [eventsattouchwood.co.uk](https://eventsattouchwood.co.uk)

**Places are limited, so please book early to avoid disappointment. A Halloween magical adventure not to be missed!**



ENGLISH HERITAGE

**Kenilworth Castle and Elizabethan Garden**  
Castle Green, Off Castle Rd, Kenilworth, Warwickshire CV8 1NG



Days Out

### **Halloween Half Term at Kenilworth Castle and Elizabethan Garden**

Gather your little monsters for a ghoulishly good day out at Kenilworth Castle and Elizabethan Garden this half-term.

This Halloween, a team of eight monster hunters has assembled at Kenilworth Castle. Each hunter is a master in tracking a particular type of spooky creature. Explore the castle grounds, seek out all eight Hunters, and hear their thrilling tales, expert tips, and eerie encounters.

Complete the adventure to earn your Monster Hunter Certificate – and be ready for whatever supernatural surprises Halloween has in store!

Age: All ages  
Dates: Saturday 25<sup>th</sup> October– Sunday 2nd November 2025  
Times: 10am to 4pm  
Cost: Tickets start from:  
£16.50 per adult  
£43.00 per family (2 adults, 3 children)  
£26.50 per family (1 adult, 3 children)  
Book online and save 15% on the price of entry.  
Free for English Heritage members

Website: <https://www.english-heritage.org.uk/visit/whats-on/kenilworth-castle-halloween-half-term-24-31-oct-2025/>





**Transport Museum Wythall**  
**Chapel Lane, Wythall, B47 6JA**



### **Halloween at Wythall**

Spooky goes on throughout the weekend on our final opening days of the year. Best costume wins a prize, Halloween games to play, Free face painting, Visit our special ghost bus and go trick or treating.

Meet some really spooky characters  
Enjoy special Halloween drinks and snacks in the café

Age: All ages

Dates: 29<sup>th</sup> October 2025.

Halloween Saturday 1<sup>st</sup> & Sunday 2<sup>nd</sup>  
November.

Times: 10.30am to 4:30pm

Cost: 29<sup>th</sup> - Adult £8; Child £4; Family(1+2) £14; (2+2) £20 Miniature railway ride £2  
Halloween £8 per Adult, Children Free, Miniature railway rides £2

Contact: 01564 826471 (during office hours).

Website: [www.wythall.org.uk](http://www.wythall.org.uk)



**Hatton Adventure World**  
**Hatton Adventure World, Dark Lane, Hatton,**  
**Warwick, CV35 8XA**



### **Halloween Spooktacular**

Hatton Adventure World is excited to announce the return of its much-loved Halloween Spooktacular, running 11, 12, 19 and 20 October then 25 October – 2 November from 10am – 5:30pm.

Get ready for a fang-tastic mix of spooky fun and family adventures! All included in your ticket price.



Hatton Adventure World's Halloween Spooktacular 2025 is the ultimate family Halloween event in Warwickshire, offering a full day of seasonal activities and spooky fun this October half term. Perfect for families with children, the event includes pumpkin picking and carving, a trick-or-treat village, zombie laser combat, UV trails, and a monster mash disco, making it one of the top-rated Halloween days out near Birmingham and Coventry. With added attractions like soft play, falconry displays, guinea pig handling, and a funfair, Hatton delivers indoor and outdoor Halloween fun whatever the weather.

Age: All ages

Dates: 11<sup>th</sup> October – 2<sup>nd</sup> November 2025

Times: 10am-5pm

Cost: £20.95 adult and child over 80cm tall.

Contact: 01926843411

Website: <https://hattonhalloween.com/>

### **Hatton Halloween Haunted Drive In**

Get ready for five terrifyingly good nights of spine-chilling cinema at the iconic Hatton Halloween Haunted Drive In!

This October, experience the thrill of the Hatton's Haunted Drive-In, Warwickshire's must-visit Halloween drive-in movie event!

Join us for a unique Halloween drive-in cinema experience under the stars, where each night features two epic screenings:

- A family-friendly spooky film at the earlier showing, perfect for little ghouls and grown-ups.
- A late-night horror movie for adults, packed with screams and suspense.

Whether you're looking for Halloween things to do with kids or planning a horror-themed night out, this event has something for everyone.

Films: Wallace and Gromit at the curse of the Wererabbit (2002) – The Lost Boys (1987) – Ghostbusters (1984) – The Blair Witch Project (1999) – The Addams Family (1991) – Scream (1996) – Hocus Pocus (1993) – Final Destination (2000) – Scooby Doo – Spooky Island (2002) – Texas Chainsaw Massacre (1974)

Enjoy your refreshments from the comfort of your car or step out to soak in the creepy atmosphere.

Watch from your car with sound through your radio

Park up early to get the best spot

Dress up if you dare, costumes are welcome!

Age: All ages

Dates: 11<sup>th</sup>, 18<sup>th</sup>, 25<sup>th</sup>, 30<sup>th</sup> and 31<sup>st</sup> October.

Times: 6pm and 8.30pm

Cost: £40 per car

Contact: 01926843411

Website: <https://hattonworld.com/haunted-drive-in-warwickshire/>



**Castle Bromwich Hall and Gardens**  
**Chester Road, Castle Bromwich, Solihull B36 9BT**



Castle Bromwich  
Hall Gardens

The Gardens are open every day over the half term holidays from Saturday 25<sup>th</sup> October to Sunday 2nd November 2024 for everyone to enjoy Autumn and get a little spooky together. There will be a range of activities included in the normal entry fees; Including the Spooky Maze, Broomstick races, a witches trail and Halloween crafts.



### **Halloween Potion Class**

A spooky class for mixing potions and brewing up some magic at our Halloween Potions Class! Dare you sign up for our Halloween Potions Class? Come join us at Castle Bromwich Historic Gardens for a spooky and fun event where you can brew your own magical potions. Whether you're a seasoned witch or wizard or just starting out in the world of potion-making, this class is perfect for all levels of experience. We'll be attempting 3 or 4 special potions – depending on how much magic the class can gather!

We'll get you sorted into Hogwarts Houses and move on to Troll Bogeys before using Wartcap Powder, Dragons Blood and maybe some Veritas Serum to cook up some fizzing magic.

Our expert potion leaders will guide you through the process and you'll leave with a small potion bottle full of your own favourite magic.

Don't forget to dress up in your best witch or wizard attire and bring your wand if you have one to really get into the spirit of Halloween!

Spaces are limited (10 children per class) so be sure to reserve your spot now for a bewitching time at the Halloween Potions Class!

Age: Ideal for children 7 years and older with their adults

Dates: Wednesday 29<sup>th</sup> October at 2pm & Saturday 1<sup>st</sup> November at 11am

Cost: £15 per Child (includes 1 Adult)  
Extra Adult (limited to one extra per child) £8

Website: [www.castlebromwichhallgardens.org.uk/calendar/](http://www.castlebromwichhallgardens.org.uk/calendar/)

### **A Kid Sized Falconry Experience**

A 90-minute experience getting close up and flying owls and birds of prey – for under 16s

Young people's interest in wildlife, or even in Harry Potter, just grows and grows. Now, your young enthusiast can get close to these wonderful creatures and to learn how to hold them safely on the hand (with a glove on, obviously!)

Our adult Falconry and Owl sessions have a great following here in the Gardens and now Tora's Falconry can offer small groups their own hands-on experience during the school holidays.

Each child get an opportunity to learn about the birds, see them fly and get a chance to fly a small owl or falcon.



Age: Ideal for children 5 years and older with their adults

Dates: Saturday 2nd November at 11am & 1.30pm

Cost: £18 per Child (includes 1 Adult)  
Extra Adult (limited to one extra per child) £8

Website: [www.castlebromwichhallgardens.org.uk/calendar/](http://www.castlebromwichhallgardens.org.uk/calendar/)

Days Out



## Woodland Wizards



The woods are alive with Magic...this Autumn.

Why not come down and train as a Wizard's apprentice, make your own wand, create strange and mythical creatures, mix muddy potions and play some spooky games. Feel free to dress as your favourite witch or wizard if you wish.

Please note: This session is entirely outdoors - please dress accordingly.

Age: Ideal for 3 to 9 year olds with their adults  
 Dates: Tuesday 28<sup>th</sup> October (11am – 12.30pm)  
 Wednesday 29<sup>th</sup> (11am & 12:30)  
 Cost: £13 per family (2 adults and 2 children)  
 £3 per each additional child (when bought with a family ticket)  
 £8 for 1 Adult and 1 Child  
 Website: [www.castlebromwichhallgardens.org.uk/calendar/](http://www.castlebromwichhallgardens.org.uk/calendar/)

## **Spooky Disco in the Gardens** 🧛

*A kid friendly Halloween disco: High energy, spooky not scary, event for Halloween*

Halloween at the Gardens wouldn't be the same without the Spooky Disco...

Non-stop boppy Halloween favourites under the shelter of the stretch tent.

The Gardens are a safe and friendly place, but after dark, when the colourful lights come on who else might you meet as you run across the lawn to the tent?

Both sessions have non-stop atmospheric music for the kids to bounce away their energies in a spooky, but not scary environment.

The younger kiddies can slope off at 6pm for an early night, the second session welcomes families with slightly older children; the music's louder, the spooks a little scarier...same vibe.

We look forward to you joining us. Dress up (dress warm) and scare away. Hot chocolate and other refreshments available

This is primarily a family event for children (3-11).

Adults must remain in charge of their children at all times. But you can dress up and join in too.

Please note there will be loud music and a smoke machine.



### Early Session

Age: Ideal for children aged 3 to 7 years old with their adults

Dates/Times: Friday 31<sup>st</sup> October (4.30pm to 6pm)

### Later Session

Age: Ideal for children aged 7 to 11 years old with their adults

Dates/Times: Friday 31<sup>st</sup> October (7pm to 8.30pm)

Cost: £6.57 per adult, £5.00 child 3-16 years  
£20.00 Family up to 2 adults and 3 children

Website: <https://www.castlebromwichhallgardens.org.uk/events-calendar/>

### Packwood House

Packwood Lane, Lapworth, Warwickshire B94 6AT



### October half-term Pumpkin Trail

Join us at Packwood this October half-term to solve the mystery of the missing pumpkins! Packwood House's head gardener needs your help to solve the mystery of her missing prized pumpkins. Come and wander around the grounds, solve clues and discover the pumpkin thief to claim your reward.



Age: All ages

Dates: Saturday 25<sup>th</sup> October to Sunday 2<sup>nd</sup> November 2025

Times: 9.30am to 3.30pm

Cost: Normal admission prices, plus £3.50 per trail

Contact: 01564 782024

Website: [www.nationaltrust.org.uk/visit/warwickshire/packwood-house](http://www.nationaltrust.org.uk/visit/warwickshire/packwood-house)



**Baddesley Clinton**  
**Rising Lane, Baddesley Clinton, Warwickshire, B93**  
**0DQ**

**October half-term Black Cat Trail**

Join us at Baddesley Clinton this October half-term to spot how many cats are hiding in the garden! This half term prowl through the gardens and see how many of Baddesley's feline friends you can spot along the way and claim a reward along the way.

Age: All ages  
 Dates: Saturday 25<sup>th</sup> October – Sunday 2<sup>nd</sup> November  
 Times: 9.30am to 4pm  
 Cost: Normal admission prices, plus £3.50 per trail  
 Contact: 01564 783249  
 Website: <https://www.nationaltrust.org.uk/visit/warwickshire/baddesley-clinton>



**Coughton Court**  
**Alcester, Warwickshire, B49 5JA**



Join Roofus the bat on a trail around Coughton Court to find his friends! Discover fun facts about bats and other animals as you go. Who will you meet along the way? Free event, normal admission applies.

Age: All ages  
 Dates: Saturday 25<sup>th</sup> October – Sunday 2<sup>nd</sup> November  
 Times: 9.30am to 4pm  
 Cost: Normal admission prices, plus £3.50 per trail  
 Contact: 01789400777

Website: <https://www.nationaltrust.org.uk/visit/warwickshire/coughton-court>

**Stratford Town Walk**  
**Stratford**

The Town Walk is a lovely way to explore Stratford, its history, attractions and fascinating relationship with William Shakespeare. Whether you are a local or visitor this highly acclaimed premier walking tour offers a unique way to create lasting memories as you immerse yourself in the beauty of Stratford upon Avon. Suitable for all. The walk is accessible. Dogs are welcome. Location: Swan Fountain on Waterside, near the RST and opposite Sheep Street

Age: All ages welcome  
 Dates: Every day of the year  
 Times: 11am (walk start time) and also at 2pm on Saturdays. Duration up to 2 hours  
 Cost: £10 per adult, £5 per child (8 to 15 years), Under 8 years free!  
 Fee includes - exclusive discounts at shops, restaurants, pubs, coffee shops and attractions.  
 Contact: Pre-book your tickets online or phone 07855 760377  
 Email: [stratfordtownwalk@btinternet.com](mailto:stratfordtownwalk@btinternet.com)  
 Website: [www.stratfordtownwalk.co.uk](http://www.stratfordtownwalk.co.uk)



## Stratford Ghost Walk

Join Edward or the Man in Black for a magical walk around the 'haunted' streets of Stratford upon Avon. The stories you hear are true, what you make of them, is



upto you. Good old-fashioned storytelling with entertainment.

Discover the ancient creaky buildings seeping with tales of ghosts, witches, murder and misery. Hear about the witch who lived in a slum, a 17th century haunted tearoom, the theatre ghost and a jilted bride. Don't go home alone!

The guides are professional entertainers and deliver Stratford's premier ghost walk in their own unique style. A magical and ghostly evening – not to be missed!

Age: 8 years and above (unsuitable for under 8s)

Dates: Every Saturday

Times: 7.30pm

Cost: £10 per adult £5 per child (8 to 15 years)

Please note: fee includes exclusive discounts at selected shops, restaurants, pubs, coffee shops and attractions.

Contact: Pre-book your tickets online or phone 07855 760377

Email: [stratfordtownwalk@btinternet.com](mailto:stratfordtownwalk@btinternet.com)

Website: [www.stratfordtownwalk.co.uk](http://www.stratfordtownwalk.co.uk)

## **Berryfields Farm** **Berkswell Road, Meriden, CV77LB**



### Halloween At The Barn

Search for your favourite pumpkin in our giant pumpkin field and indoor barn. Pick from our huge range of orange, white or green, classic, novelty or giant pumpkins and squashes - we have every shape and size!

Plus, enjoy feeding our farm animals, explore our Fat Hen Maze, go Eco-Skating, go Axe-Throwing, and finish your visit by tucking into our incredible handmade street food & bar!

Age: All Ages

Dates: Open every weekend from 4th October and every day through half-term

Times: 10am – 7pm

Cost: Entry-only: £4.50 per person (baby in arms Free), Family Bundle (2 adults & 2 kids): £16, Entry & Eco-Skating: £9 per person.

Only available to purchase on the day: Kids Axe-Throwing: £5 for up to 5 people for 5 minutes, Adults Axe-Throwing: £3 for 9 throws (**over 18's only**)

<https://www.thebarnatberryfields.co.uk/book-tickets-halloween>



**West Midland Safari Park**  
**Bewdley, Worcestershire DY12 1LF**

### **Spooky Spectacular**

This Halloween, West Midlands Safari Park is unleashing monster mayhem for a spooky experience like no other! From 18th October – 2nd November 2025, we're pulling out all the stops with a mix of thrilling adventures, spooky shows, and monstrously good fun for the whole family!

#### **New: Frankie's Monster Mash Show**

Meet our brand-new character, Frankie! Watch this little Frankenstein's monster in an electrifying new show that's sure to shock and amaze. With lightning-fast tricks and a twist of fun, Frankie's show will have you laughing and dancing in equal measure. Don't miss out on this ghoulishly good performance!

#### **Patch & Mitzy's Spooky Walkabout!**

Get ready to encounter Patch, our pumpkin-headed scarecrow, and Mitzy, the mischievous monster, as they roam the Park! With plenty of cheeky antics and photo ops, be sure to snap a pic with these spooky stars as they spread Halloween mischief. Who knows what mayhem they'll get up to next?

#### **New Monster Mystery Trail**

Something spooky, slimy and fuzzy are lurking on the Safari Walk, and it's up to you to find them! Solve clues, find the hidden monsters, and earn a sweet treat as a reward for your monster-hunting skills. A perfect quest for little explorers who aren't afraid of a little spooky fun!

#### **Crazy Craft Club**

Calling all little witches and Wizards! Join us in our Enchanting Experiments Emporium for a spook-tacular crafting session.

Meet the silly scientists and design a monstrous creation or get your hands dirty making your very own spooky souvenirs! It's a wild, creative adventure for all ages. This is also where you can collect your sweet treat for finishing the trail.

#### **Photo Competition:** Want to win a spook-tacular prize? Capture the magic of

Halloween by taking a picture at our specially themed photo point! Share your snap with us, and you could win a *Safari Lodges stay* for up to four people. It's the perfect family getaway—if you dare!

#### **Patch's Potion Pursuit** - Every day, Patch will be hiding a potion somewhere in the park.

The first person to find the hidden potion and hands it in to our Silly Scientists will win an enchanting prize!

With pumpkins galore, spooky scenes and things lurking round every corner, you're in for a fang-tastic time!

Age: All Ages  
Dates: Saturday 18<sup>th</sup> October – Sunday 2<sup>nd</sup> November  
Times: 10am – 6pm  
Cost: Day Tickets From £19.00 Pre-booked – on the day £32.00 – under 3's FREE  
Website: <https://www.wmsp.co.uk/tickets/tickets-passes>

**Coventry Transport Museum**  
**Millennium Place, Hales Street, Coventry CV1 1JD**

### **Tinker | Make | Play Engineer: Challenge Yourself**

Join our October Half-term Tinker Make Play family workshops for a few hours of explorative learning – and fun – with family, friends and engineering challenges.

TINKER away! With stuff, tools, your ideas and find out how things work, learn some tool skills and see where your curiosity will take you.

MAKE something! Anything! Use the huge variety of resources we offer. Get hands-on, creative and make your ideas (or our challenges) come true. Make something super big or really small and wow yourself and us too.

PLAY about! Push your imagination, raise your curiosity and simply play away. Whether you get into play mode during some maker challenges or in our playroom, we love seeing families at play.



Dates: Wednesday 25<sup>th</sup> October  
Saturday 29<sup>th</sup> October  
Wednesday 1<sup>st</sup> November 2025  
Times: 11am - 3:30pm (drop-in session)  
Cost: Free with admission  
Website: <https://www.transport-museum.com/events/1589/tinker-make-play-engineers-challenge-yourself>



**Birmingham Botanical Gardens**  
**Westbourne Road, Edgbaston, Birmingham B15 3TR**

### **The Spiders Tangle Trail**

Explore the twists, threads, and wonders of webs!

18<sup>th</sup> October – 2<sup>nd</sup> November 2025

Explore The Spider's Tangle Trail to uncover the secrets of a variety UK's web types – from spirals to tangles, tunnels to traps – through interactive facts, playful poetry and glowing discoveries.

A unique outdoor experience combining art, storytelling and nature  
No plastic, no jump-scares – just creativity, connection and curiosity

Age: Children aged 4–11 and their grown-ups  
Dates: Saturday 18<sup>th</sup> October to Sunday 2<sup>nd</sup> November 2025  
Times: 10am to 5pm  
Cost: £9 per Adult, £6 per child (5-16 years) (Children 4 years and under are Free).  
Family Tickets are also available Trails are an extra £2  
Website: <https://birminghambotanicalgardens.org.uk/bbg-event/the-spiders-tangle-trail-2025/>



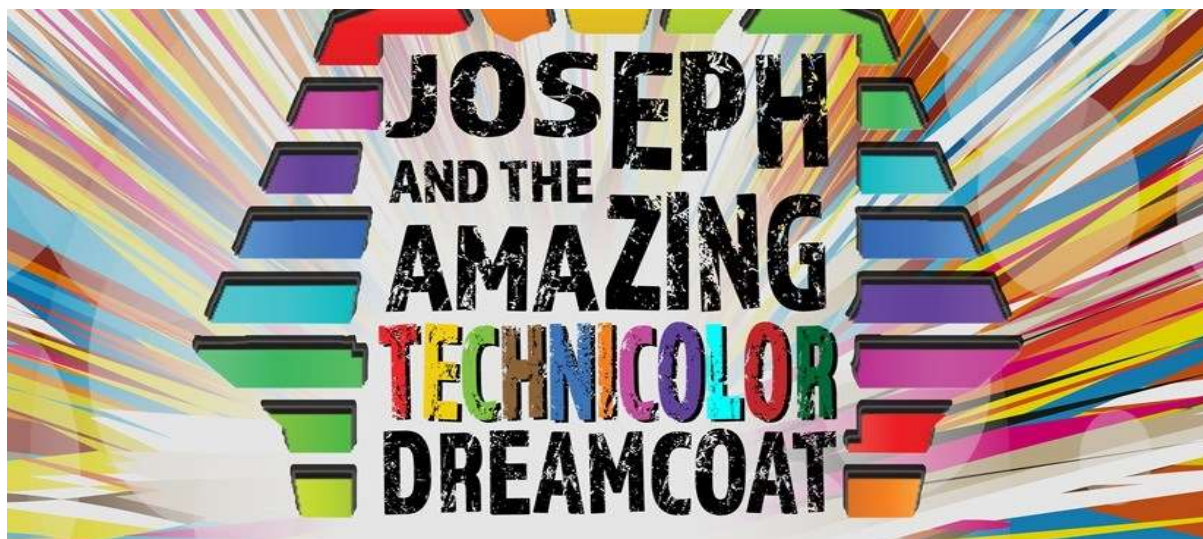


The Core Theatre  
Library Square, Touchwood

Days Out

### **Joseph and the Amazing Technicolor Dreamcoat**

Come on a musical journey as we meet Joseph, discover his dreams, see his brothers and follow Joseph's path to greatness.



Dates: Tuesday 21<sup>st</sup> October - Saturday 25<sup>th</sup> October 2025  
Times: 7.30pm each day and Saturday 25<sup>th</sup> October 2.30pm & 7.30pm.  
Cost: £22  
Website: <https://www.thecoretheatresolihull.co.uk/whats-on/all-shows/joseph-and-the-amazing-technicolor-dreamcoat/27590/>

### **How To Train Your Dragon (2025) 12A** **The Core-Film**



2025 fantasy adventure. As an ancient threat endangers both Vikings and dragons alike on the isle of Berk, Hiccup the Viking forges an unlikely friendship with a Night Fury dragon.

Dates: Monday 27<sup>th</sup> October -Film  
Times: 2pm  
Cost: £6

Website: <https://www.thecoretheatresolihull.co.uk/whats-on/all-shows/how-to-train-your-dragon-2025/27752/>



**1st Solihull Scout Group**  
303 Lode Lane, Solihull, B91 2HZ

### **Bonfire & Fireworks**

Age: All welcome  
Date: Wednesday 5<sup>th</sup> November  
Time: 6pm  
Cost:  
Booking: **Online pre-purchased tickets only**  
<https://www.skiddle.com/whats-on/solihull/1st-Solihull-Scout-Group/>

Stalls including a BBQ food, Drinks, light up toys and sweets.

**Kingshurst Scout Group**  
184th 1st Kingshurst scouts, Bassetts Grove Kingshurst  
Birmingham B37



### **Kingshurst Scout bonfire night**

Join us for a night of fun, food and fireworks at the Kingshurst Scout bonfire night!

Age: All ages  
Dates: Saturday 8<sup>th</sup> November 2025  
Times: 6pm – 9.30pm  
Cost: £6.13  
Website: to book tickets [https://www.eventbrite.co.uk/e/kingshurst-scout-group-bonfire-night-tickets-1697707582079?aff=ebdssbdestsearch&keep\\_tld=1](https://www.eventbrite.co.uk/e/kingshurst-scout-group-bonfire-night-tickets-1697707582079?aff=ebdssbdestsearch&keep_tld=1)

## Tudor Grange Park, Solihull

### Solihull Round Table Fireworks

Enjoy two displays – a shorter, lower-noise Child friendly Display and a 15-minute Main Display set to music – plus a roaring bonfire, funfair and great food.

Gates: 4:30–9:30pm

Must purchase tickets online.

All profits support local charities and good causes.

See you there!

Age: All Welcome

Dates: Saturday 8<sup>th</sup> November 2025

Times: 4:30pm – 9:30pm

Cost: Early bird before 6pm £9.00 Adult, £3.50 Child;  
after 6pm £10.00 Adult, £4.00 Child.

Website: <https://tix.ticketwrangler.co.uk/solihull-round-table/fireworks/>



## Arden Academy

Station Road, Knowle - B93 0PT



### A Spectacular Charity Firework Display

We will have **two** incredible displays for everyone to enjoy. The first display will be a sound sensitive show, which is especially appropriate for small children or people with noise sensitivity. Followed by the same amazing main display as usual.

Come and grab a bite to eat or a sweet treat at our street food market 🍔 🌮 🍕 🍩 🍪

There will be a fully stocked bar including mulled wine, real ale, hot and cold drinks. Also glow, teddy and chocolate tombola's, games and more!

Order now as advanced tickets are significantly discounted!

Pre-order your steak burgers and jumbo hot dogs in advance from the PTFA Stall - limited numbers and pre-orders are discounted - order now so you don't miss out. 🍔 🌮

Age: All Welcome

Dates: Saturday 8th November 2025

Times: 5pm-8.30pm

Cost: On the gate prices will be £12 Adult, £8 Child, £34 Family (of 4)

Web: <https://www.ptaevents.co.uk/ardenschoolptfa/index.cfm?event=event&eventId=100869>





**Blossomfield Cricket Club**  
Widney Lane, Solihull, B91 3JY

### **Blossomfield Bonfire Night**

Event Attractions:  
Street Food Stalls, Indoor &  
Outdoor Bars, Music and a Live  
Fire Performer

Age: All Welcome  
Dates: Friday 7<sup>th</sup> Nov 2025  
Times: 6pm-9pm  
Cost: Family Ticket:  
£24.99 (Two adults  
& two children)  
Adult Ticket: £8.99  
(Over 18)  
Child Ticket: £6.99  
(Under 18)



Booking:

<https://www.trybooking.com/uk/events/landing/92186>

### **Wythall Community Association** **Wythall Park**



### **Bonfire and Fireworks**

This annual event is always popular with the local community. Raising funds for Wythall Park Charity, the event includes a bonfire and two fireworks displays. There are also food vendors and funfair rides to keep the children entertained.

The event is ticket only with limited numbers to maintain safety. No tickets available on the gates.

- 🔥 6.30 Bonfire Lighting
- 🌟 7.30 Fireworks Display – quieter display aimed at younger children
- 🌟 8.30 Main Fireworks Display

Age: All Welcome  
Dates: Saturday 1<sup>st</sup> November 2025  
Times: Gates open at 6pm  
Cost: Discount Tickets (available from 12th to 26th October 2025)  
Adults and children aged 11 and over £12.50 (+fees) per ticket  
General Tickets (available from 27th October to 1st November 2025)  
Adults and children aged 11 and over £15.00 (+fees) per ticket  
Under 10's Free - Children must be supervised by an accompanying adult at all times.

Website: <https://www.eventbrite.co.uk/e/wythall-community-association-bonfire-and-fireworks-tickets-1513199673959?aff=ebdssbdestsearch>

## Kenilworth Castle



ENGLISH HERITAGE

### Kenilworth Round Table Fireworks Spectacular



On Saturday 8 November 2025, enjoy the town's biggest fireworks display at Kenilworth Castle, with food stalls and entertainment for all the family. This event is organised externally by Round Table and is set to be their biggest charity fundraiser of the year.

All profits raised from this event will be used to support local charities, worthy causes and community projects.

Age: All ages

Dates: Saturday 8th November 2025

Times: Gates open at 5.30pm. Last entry at 6.45pm

Cost: Tickets start from:

£14 per adult

£7 per child (5-17) FREE (Under 5's)

£21 Family (1 adult, 2 children)

£35 Family (2 adults 2 children)

<https://kenilworthroundtable.com/fireworks/>

Hatton Adventure World, Dark Lane, Hatton,  
Warwick, CV35 8XA



### Hatton Country World Fireworks

Light up your autumn with a spectacular evening of fire, food, and family fun at Hatton Country World!

Gaze skywards and enjoy a mesmerising display of fireworks, professionally choreographed to music. The entertainment doesn't stop there, with spell-binding fire dancers, DJ, family-friendly fairground rides and a host of street food stalls ready to tickle your tastebuds. Tickets are strictly limited and must be pre-booked online on a first come, first served basis. Please arrive at the time slot on your ticket. **The Fireworks will start at 7.30pm!**



Age: All ages

Dates: Saturday 8th November 2025

Times: 5.45pm. Last entry at 6.30pm

Cost: £50 per car (Max of 7 guests per

vehicle) <https://hattonworld.com/fireworks/>