

Solihull Parents' Network

Christmas 2025 Family Events



Images courtesy of (from clockwise) Warwick Castle, Litchfield Cathedral and Kenilworth Castle

Solihull Family Information Service

Call: 0800 389 8667

Email: familyinfo@solihull.gov.uk

Web: www.solihull.gov.uk/familyinfo

Balsall Common Library

283 Kenilworth Road, Balsall Common CV7 7EL

Christmas Make and Merry

Escape to the library with a morning of creative fun and relaxing crafts! Suitable for children aged 4 to 11 years and their grown-ups. No need to book, just drop in and bring your Christmas creativity!



Age: 4 to 11 years
 Dates: 22nd December
 Times: 10.15am to 12.15pm
 Cost: Free
 Contact: 01676532590
 Email: libraries@solihull.gov.uk
 Website: <https://www.solihull.gov.uk/library-events>

Meriden Library

Arden Cottage, The Green, Meriden CV77LN

Christmas Craft and Relax



T'was the Christmas school holidays! Drop-in to the library during our opening hours for a selection of relaxing crafts. Suitable for children aged 4 to 11 years and their grown-ups!

Age: 4 to 11 years
 Dates: 22nd December
 Times: 10.30am to 4.30pm
 Cost: Free
 Email: libraries@solihull.gov.uk
 Website: <https://www.solihull.gov.uk/library-events>

Hampton in Arden Library

Fentham Road, Hampton in Arden, Solihull, B92 0AY

Join us for Christmas Crafts

Age: 4 to 11 years
 Dates: 16th and 18th December
 Times: 2.30pm to 4.30pm
 Cost: Free
 Email: libraries@solihull.gov.uk
 Website: <https://www.solihull.gov.uk/library-events>



FESTIVE CENTREPIECE WORKSHOP



Join us at Chelmsley Wood Library for a
festive craft session!

Create your own beautiful Christmas table
decoration, complete with a glowing candle
in the centre to take home.

Monday 15th December 10:30

This activity is for adults only. Spaces are limited, to
reserve your space, please speak to a member of
staff at Chelmsley Wood Library



Olton Library

169A Warwick Road, Olton, Solihull, B92 7AR

Storytime



Christmas Storytime at Olton Library

Join us for a special Storytime where we'll share some of our favourite Christmas stories.

Age: 0 to 5 years, older siblings welcome

Dates: Tuesday 23rd December: 2:15pm – 2:45pm

Cost: Free

Contact: 0121 706 3038

Email: libraries@solihull.gov.uk

Website: <https://www.solihull.gov.uk/library-events>

Christmas Crafts

Drop in to make some fun seasonal crafts at our craft table. Grown-up supervision required.

Age: 3 to 11 years

Dates: Saturday 20th December: 10am - 12.30pm

Monday 22nd December, Tuesday 23rd December:
10am – 12:30pm, 2:45pm – 4:30pm

Cost: Free

Contact: 0121 706 3038

Email: libraries@solihull.gov.uk

Website: <https://www.solihull.gov.uk/library-events>



Chelmsley Wood Library

10 West Mall, Chelmsley Wood Shopping Centre, Chelmsley Wood, B37 5TN

Solihull
Libraries



Christmas Treasure Hunt at Chelmsley Wood Library



Come along and take part in our Christmas library treasure hunt! Find all of the letters on our mystery book characters, reveal the hidden festive word and win a small prize!

**Monday 15th December-Saturday 20th
December**

10am-12pm & 2pm-4pm

No booking needed, just drop in!



Chelmsley Wood Library

10 West Mall, Chelmsley Wood Shopping Centre, Chelmsley Wood, B37 5TN

Solihull
Libraries



Christmas Storytime and Craft Activity at Chelmsley Wood Library



Join us for a magical Christmas storytime with rhymes and make your own paper gingerbread wreath and reindeer wand to take home!

Wednesday 17th December 10:30-11:30

To reserve your space, please speak to a member of staff at Chelmsley Wood Library
on 0121 788 4380



The Core

Theatre Square, Touchwood, Solihull, B91 3RG

Solihull Arts Markets

A vibrant marketplace of handmade art and design — from glass and ceramics to textiles, print, jewellery and fine art.

Saturdays and Sundays until Sunday 21st December.

The Solihull Arts Markets bring together a handpicked selection of artists, designers and makers from across the Midlands in the welcoming spaces of The Core, Touchwood, Solihull. Each market day transforms The Core into a vibrant marketplace of handmade art and design — from glass and ceramics to textiles, print, jewellery and fine art.

Visitors can meet the makers, buy directly from local creatives, and enjoy a festive, friendly atmosphere in the heart of Solihull.

Apply to Exhibit

Are you an artist or maker looking for a vibrant, supportive place to sell your work this festive season?

For more information visit: <https://www.thecoretheatresolihull.co.uk/whats-on/all-shows/solihull-arts-markets/27779/>

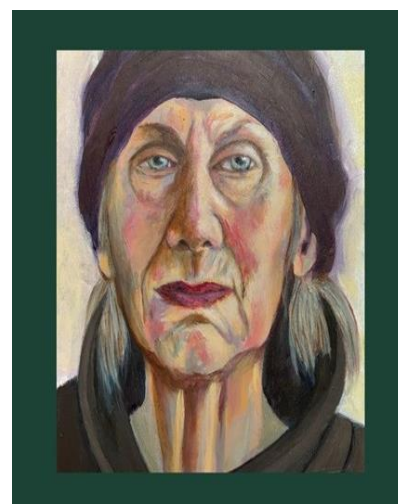
Winter Folk

A showcase of folk traditions, winter landscapes, objects woven from the natural world and seasonal figurative paintings.

This exhibition brings together diverse work by 21 contemporary artists based in the West Midlands. Spanning arts and crafts, it showcases folk traditions, winter landscapes, objects woven from the natural world, and seasonal figurative paintings. As the solstice arrives, viewers are invited to rethink winter as a time of warmth.

Curated by Ruth Millington, this exhibition is the culmination of a *Get Gallery Ready* bootcamp at Solihull College & University Centre.

Odette Campbell, Beth Coutts, Kerrie Dale, Maya Davis-Stokes, Crow Dillon-Parkin, Tanya Farrugia, Anne Forgan, Lee Harvey, Milly Jackson, Gorana Law, Yulia Lisle, Shayan Mawlood, Anna Maxwell, Natalie Mills, Karin O'Sullivan, Marta Pieroni, Janice Rider, Lucy Sadova, Mitch Schofield, Paul Seven and Sam Weeks.



Friday 12th December 2025 - Saturday 10th January 2026

Open during Library hours

Free entry

Santa's Christmas Party



Following last year's sell-out performances, Honalee Media are delighted to present a brand-new show this festive season...

"Christmas is the busiest time of year at the North Pole, when Father Christmas makes presents to deliver across the whole world...and when everyone gets ready for Santa's Christmas Party!

But this year somebody has been up to mischief...

Dotty the Elf's decorations have gone missing,

Dasher the Reindeer's party games are broken and what has happened to Pompom the Penguin's Christmas music?

It looks as though somebody wants to stop Santa's Christmas Party - and that someone is Jack Frost!

Help get Santa's Christmas Party back on track in an adventure full of fun, festive songs and party games. Then meet Santa at his home in the North Pole, where every child will receive a special present from him, after the most Christmassy Christmas show ever – HO-HO-HO!

Songs include festive favourites Jingle Bells, Rudolph the Red-Nosed Reindeer, Have Yourself a Merry Little Christmas, The Twelve Days of Christmas, We Wish You A Merry Christmas and more!"

Santa's Christmas Party is a 45-minute, interactive family show, particularly suitable for 2–8-year-olds, after which the adventure continues as each child gets the chance to receive a special present from Father Christmas in our popular meet, greet and treat!

Age: 2 to 8 years

Dates: Friday 19th – Wednesday 24th December 2025

Times: Various see website for details

Cost: Ticket prices: £12.50 adult, £11.50 child, £46 family of 4.

Email: thecoretheatre@solihull.gov.uk

Website: <https://www.thecoretheatresolihull.co.uk/whats-on/all-shows/santas-christmas-party/27532>



Aladdin

Panto returns to The Core Theatre with Little Wolf Entertainment's magical Production. Saturday 6th December - Sunday 4th January, The Core Theatre.

Sometimes you get even more than you wished for...

Aladdin wishes the Princess would notice him, the Princess wishes she could live a normal life, Aladdin's mother wishes she could remember what she came in here for...and there's something very peculiar about that ancient clapped-out rusty thing. (The lamp...not his mother).

Let us whisk you away this Christmas to the town of Shangri-La where the sorcerers are sinister, the caves are full of surprises, and the genies have been bottling things up for a bit.

With spectacular sets, breathtaking special effects, gorgeous costumes and mountains of mayhem, the award-winning Little Wolf Entertainment are bringing panto back to The Core Theatre with our most lavish, action-packed family adventure so far!

It doesn't take a *genie-us* to know that one of your three wishes should be to see Aladdin at The Core Theatre this Christmas!

There is a relaxed performance of the pantomime on Tuesday 30 December - find out more here: [Aladdin - Pantomime \(RELAXED PERFORMANCE\)](#)

To enquire about school performances please [email us](#).

The 2pm show on Friday 19 December is a Coffee and Cake Matinee - come along and enjoy a coffee and cake from our cafe for just £5 (prior to the show or in the interval, with a valid ticket)

Age: 3 years upwards
 Dates: Saturday 6th December 2025 - Sunday 4th January 2026
 Times: Various see website for details
 Cost: Ticket prices: £24-£28 (concessions available on some performances - see colour-coded guide). Children under 18 months may sit on laps free of charge.
 Email: thecoretheatre@solihull.gov.uk
 Website: <https://www.thecoretheatresolihull.co.uk/whats-on/all-shows/santas-christmas-party/27532>

Riverside Family Hub

289 Bosworth Drive, B37

The Christmas decoration events are all drop in events.

The movies, Christmas celebration and elf show all need to be pre-booked.

5DP



Riverside Christmas Opening Hours

Monday 22 December	08:00 - 16:00
Tuesday 23 December	08:00 - 16:00
Wednesday 24 December	CLOSED
Thursday 25 December	CLOSED
Friday 26 December	CLOSED
Monday 29 December	9:00 - 16:00
Tuesday 30 December	9:00 - 16:00
Wednesday 31 December	9:00 - 16:00
Thursday 1 January	CLOSED
Friday 2 January	CLOSED



Riverside CHRISTMAS EVENTS

Event	Date	Time
Make your own Christmas Tree Decorations	1 - 5 December	15:00 - 16:00
Decorate Our Christmas Tree	5 December	14:00 - 15:00
Movie Monday - Klaus	22 December	10:00 - 12:00
Movie Monday - The Christmas Chronicles	29 December	10:00 - 12:00
Christmas Celebration	30 December	11:00 - 12:00
Flip and Dippy - Elf show and Disco	30 December	12:00 - 14:00

Please speak to a member of staff at Riverside, for more information or to book.
Alternatively, call Riverside on 0121 779 1750

Please contact 0121 779 1700 to book a place.

Elmwood Family Hub

37 Burtons Way, B36 0UG



The poster features a cream-colored background with festive illustrations of holly leaves and berries in the corners. At the top center is the Solihull Family Hubs logo, which includes a stylized house and trees. The main title 'Elmwood Christmas Events' is written in a large, green, serif font. Below the title, a table lists the events, with each row separated by a horizontal line. The text in the table is in a black, serif font. At the bottom, there is a block of text in a smaller, black, serif font, flanked by more holly illustrations.

Marvellous Makers Christmas Session	22 DECEMBER 10:00 - 12:00
Flip & Dippy Christmas Party	22 DECEMBER 16:00 - 18:00
Christmas Craft & Cafe Session	23 DECEMBER 10:00 - 12:00
Christmas Craft & Cafe Session	29 DECEMBER 13:00 - 15:00
Movie Afternoon - Arthur Christmas	30 DECEMBER 12:30 - 14:30
Christmas Craft & Cafe Session	31 DECEMBER 11:00 - 13:00

Please speak to a member of staff at Elmwood, for more
information or to book.
Alternatively, call Elmwood on 0121 779 1700

Please contact 0121 779 1700 to book a place.

Ackers Adventure

Golden Hillock Road, Sparkbrook, Birmingham
B11 2PY



Festive Tobogganing

Enjoy 45 minutes of outdoor tobogganing for up to 6 participants this December! Includes exclusive hire of a tobogganing slope and a hot chocolate for each participant. Book an evening session to make your experience even more magical with our festive lights!

Festive Tubing

Enjoy 30 minutes of outdoor tubing this December! Includes your own tube for the session and a Hot chocolate for each participant. Evening sessions also available (please email) to make your experience even more magical under the lights!

Advanced booking is essential via our website.

Age: 3 to 12 years (Tobogganing)
8 years and above (Tubing)
Dates: Sunday 1st December to 31st December
Times: See website for details
Cost: £60 for up to 6 children (Tobogganing)
£15.00 per person (Tubing)
Contact: 0121 772 5111
Email: bookings@ackers-adventure.co.uk
Website: www.ackers-adventure.co.uk

Planet Ice Solihull

Hobs Moat Road, Solihull B92 8JN

Christmas Learn to Skate Camps

Join our fun filled 3 or 5 day Learn to Skate Camps at Planet Ice, perfect for families, friends and skaters of all levels! Whether you're stepping on the ice for the first time or refining your skills, our coached lessons promise an exciting and rewarding experience.

Age: Adults and children of all ages
Dates: Mondays to Fridays (throughout the school holidays)
Times: Please see website
Cost: Please see website
Contact: Pre-book your 3 or 5 day camps via our website or by calling 0121 742 5561
Email: solihull@planet-ice.co.uk
Website: www.planet-ice.co.uk



Stay Active

Christmas Ice Skating

Amidst the festive glow, remember that our public Ice-skating sessions continue daily throughout the holiday season and beyond! Whether you're a seasoned skater or a newcomer eager to experience the thrill of gliding on ice, Planet Ice Solihull is your winter wonderland all year round.

Perfect for all ages and abilities, whether you're new to skating or a seasoned pro, enjoy a fun, safe and memorable experience on the ice with family and friends.

Exciting news for our Ice Card Members this Christmas! Double discounts are set to sparkle on the 25th and 31st December 2025 and 1st January 2026, just in time for the festive celebrations.

Embrace the holiday spirit as our Ice Card Members enjoy a dazzling £4.80 off every magical ice-skating session on these special dates.

It's the perfect chance to unwrap the full magic of your Ice Card Membership benefits and skate joyfully into the New Year.

Please note: pre-book your sessions online to secure your spot in this winter wonderland

Website: www.planet-ice.co.uk

Christmas Day Skate

Make your Christmas extra magical with a festive skate on Christmas Day. Enjoy the rink for just £10 per person at a special discounted price. A perfect way to celebrate the season.





Christmas Ice Skating

Ice Skating session for all: Ideal for families and friends.

Whether you are a first timer or a seasoned professional, we will ensure you have a memorable and enjoyable experience.

Dates: Thursday 25th December,
Wednesday 31st December and
Thursday 1st January 2026.

Please book online

Website: www.planet-ice.co.uk

Stay Active

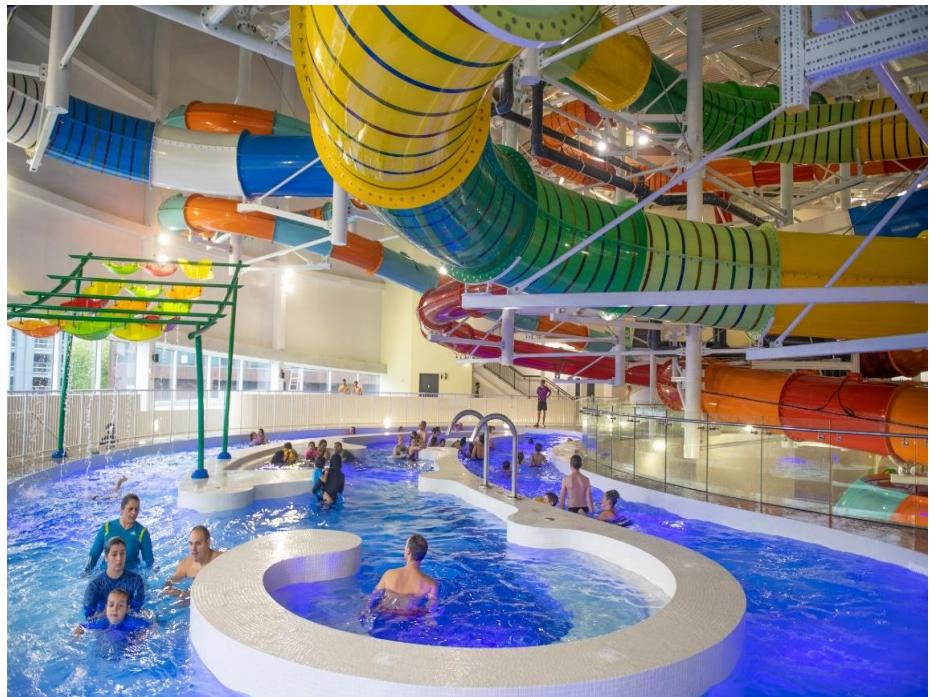
The Wave

New Union Street, Coventry CV1 2PS

Ride the Christmas wave

The Wave, a UK award-winning, indoor waterpark making a splash in the heart of Coventry!

From high-speed slides and a fun-packed splash zone to the exhilarating Wave Pool and relaxing Lazy River... There's something for thrill, spill and chill seekers of all ages to enjoy.



Dates: Saturdays throughout December
Times: 10.15am to 6pm
Cost: £56 per family ticket (2 adults, 2 juniors)
Website: www.thewavecoventry.com

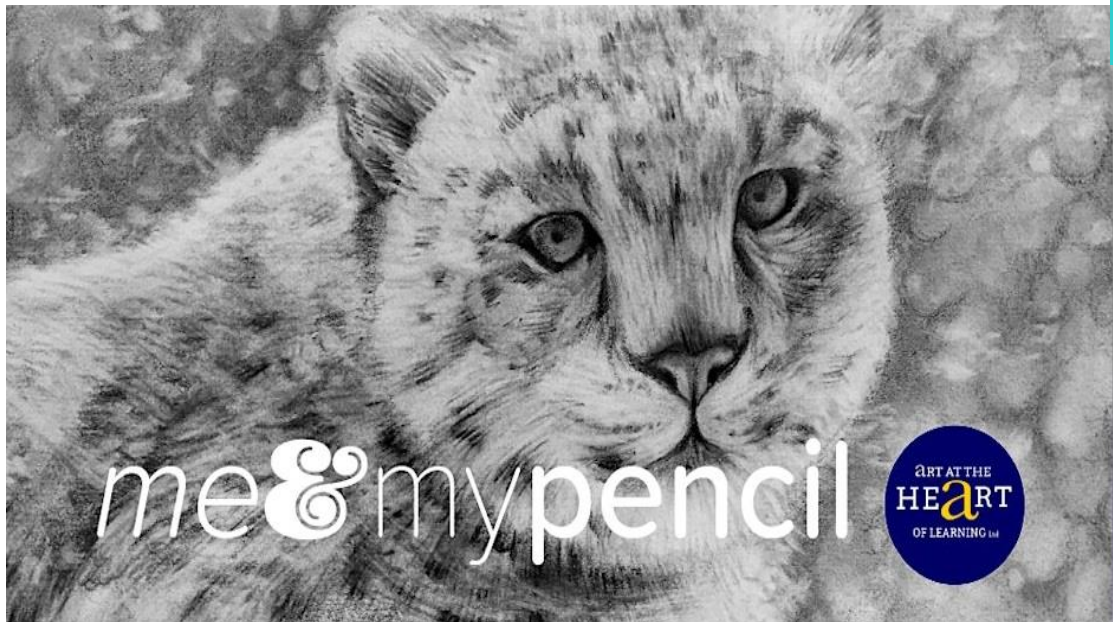
Art at the Heart CIC

The Courtyard Gallery, The Core, Homer Road,
Solihull B91 3RG

How to Draw: Snow Leopard (Christmas Special)

Looking for a unique and thoughtful Christmas gift? This workshop is the perfect present for young artists and nature lovers! In just one session, children will create their own stunning Snow Leopard drawing, learning shading techniques and pencil skills to bring the majestic animal to life.

- Learn drawing techniques to make the Snow Leopard's fur and spots look realistic.
- Framing option: For just extra £5, the artwork will be mounted and ready to gift—perfect for a wildlife or art enthusiast. Your child can mount their artwork in a beautiful mount-board.
- Support wildlife: A portion of the proceeds goes towards supporting the endangered



Age: 7 to 13 years
Date: Tuesday 23rd December
Times: 10:30am to 12pm
Cost: £22.38 per child
Email: admin@artattheheartcic.org
Website: <https://www.eventbrite.co.uk/e/how-to-draw-snow-leopard-christmas-special-tickets-1761027794539?utm-campaign=social&utm-content=attendeeshare&utm-medium=discovery&utm-term=listing&utm-source=cp&aff=ebdsshcopyurl>

Cygnets Art School

Oliver Bird Hall, Church Hill Road, Solihull



Draw a Robin with Soft Pastels

Our Saturday Christmas workshops are run at the same days and times as our term time classes but are also open for additional students to join (subject to availability!) An ideal way to try one of our classes before the Spring Term, or just to enjoy some wintery-themed creativity before the holidays. All materials are included and students will come away with a beautiful, finished artwork at the end of each class.



Age: 5 to 12 years
Date: Saturday 13th December 2025
Times: 9.45am to 10.45am
Cost: £18 per child
Website: <https://cygnets-art-school-south-solihull.classforkids.io/camp/20>

Christmas Jumper with acrylic

Our Saturday Christmas workshops are run at the same days and times as our term time classes but are also open for additional students to join (subject to availability!) An ideal way to try one of our classes before the Spring Term, or just to enjoy some wintery-themed creativity before the holidays. All materials are included and students will come away with a beautiful, finished artwork at the end of each class.



Age: 9 to 13 years
Date: Saturday 13th December 2025
Times: 11am to 12.30pm
Cost: £23.00 per child
Website: <https://cygnets-art-school-south-solihull.classforkids.io/>

Phoebe's Green Christmas

Digital Sensory Show

www.christmasforkids.org.uk

The FREE Digital Sensory Show

Phoebe's Green Christmas

"Every year, I look forward to sharing the show with my class."

"Fun, inclusive, and a great resource!"

Register here

eventbrite

Dear Friends,

Award-winning children's theatre charity, Embracing Arts, invites you to enjoy their flagship festive production: Christmas for Kids. Since 2009, these sensory, interactive shows have been enjoyed by over 46,000 beneficiaries across the UK. This year marks the 6th digital show... **'PHOEBE'S GREEN CHRISTMAS!'**

Join lovable puppet Phoebe as she tries to give her friends the best (and kindest) Christmas ever!

This eight-part interactive festive adventure is bursting with music, puppetry, colourful visuals and more! Accompanying this FREE Digital Production is a **Facilitators' Guide**, made in collaboration with organisations across the SEND network to bring the show to life for sensory learners.

Available from 3rd November at www.christmasforkids.org.uk

The show is designed specifically for neurodiverse children, those labelled PMLD and children with life-limiting illness to enjoy at home, in school, in hospice and hospital, or wherever they feel most comfortable.

Phoebe's Green Christmas promises to provide meaningful, accessible entertainment to all this Christmas, so expect lots of music, puppetry, sensory stimuli and festive cheer!

Super Sen CIC

<https://supersencic.co.uk/>

Information, support and advocacy for neurodivergent individuals, their families and those that support and work with them, from a neurodivergent perspective.

“**Super**” because we recognise that our community is just fabulous and “**Sen**” to highlight what we stand for “**Successfully Embracing Neurodivergence**”

Christmas Craft and Chat



The poster for 'Christmas Crafts and Chat' features a teal background. At the top left is the Super Sen CIC logo with the tagline 'Successfully Embracing Neurodivergence'. At the top right, it says 'Made possible by' followed by the Community Fund logo. The main title 'Christmas Crafts and chat' is in large white letters. Below the title is a Grinch-themed illustration of a green Grinch with a red hat and a red heart. To the left of the Grinch, a speech bubble says 'Make Grinch themed gonks'. Below this, a list of topics includes EHCP's, Disability Benefits, Understanding diagnosis, Signposting, School support, and 'and all things SEN'. To the right of the Grinch, a light blue speech bubble contains the schedule for December: Tuesday 2nd 9:30-11:30am at Riverside Family Hub, B37 5DP; Tuesday 9th 9:30-11:30am at Hatchford Family Hub, B92 8JE; and Tuesday 16th 9:30-11:30am at Elmwood Family Hub, B36 OUG. At the bottom right is an illustration of a pink cup of hot chocolate with a gingerbread man. At the bottom, it says 'Information and support from a fully neurodivergent perspective.'

Super Sen CIC
‘Successfully Embracing Neurodivergence’

Christmas Crafts and chat

Made possible by
COMMUNITY FUND

Make Grinch themed gonks

- EHCP’s
- Disability Benefits
- Understanding diagnosis
- Signposting
- School support
- and all things SEN

December

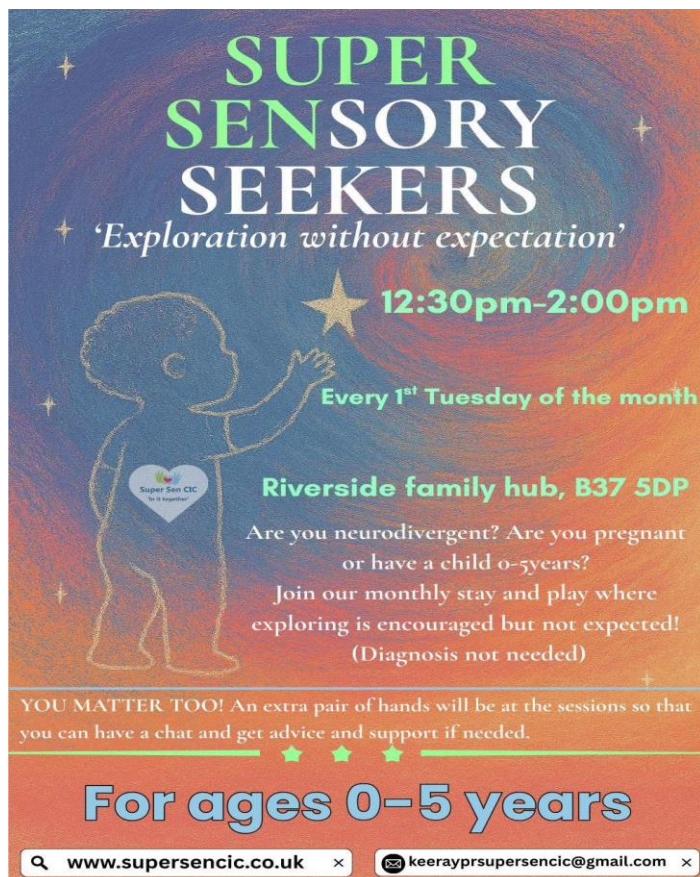
Tuesday 2nd 9:30 -11:30am
Riverside Family Hub, B37 5DP

Tuesday 9th 9:30-11:30am
Hatchford Family Hub, B92 8JE

Tuesday 16th 9:30-11:30am
Elmwood Family Hub, B36 OUG

Information and support from a fully neurodivergent perspective.

Please check date of different Family Hubs



The poster for 'Super Sensory Seekers' has a dark blue background with a starry sky. It features a silhouette of a child reaching up towards a star. The title 'SUPER SENSORY SEEKERS' is in large, bold, white letters. Below the title is the tagline '‘Exploration without expectation’'. The time '12:30pm-2:00pm' is in large yellow letters. Below that, it says 'Every 1st Tuesday of the month'. The location 'Riverside family hub, B37 5DP' is in green. Below that, it asks 'Are you neurodivergent? Are you pregnant or have a child 0-5years?' and invites people to 'Join our monthly stay and play where exploring is encouraged but not expected! (Diagnosis not needed)'. At the bottom, it says 'YOU MATTER TOO! An extra pair of hands will be at the sessions so that you can have a chat and get advice and support if needed.' and 'For ages 0-5 years'. At the very bottom, there are search bars for the website and email.

SUPER SENSORY SEEKERS

‘Exploration without expectation’

12:30pm-2:00pm

Every 1st Tuesday of the month

Riverside family hub, B37 5DP

Are you neurodivergent? Are you pregnant or have a child 0-5years?

Join our monthly stay and play where exploring is encouraged but not expected!
(Diagnosis not needed)

YOU MATTER TOO! An extra pair of hands will be at the sessions so that you can have a chat and get advice and support if needed.

For ages 0-5 years

www.supersencic.co.uk

keerayprsupersencic@gmail.com

Super Sensory Seekers

Tuesday 6th January 2026
12:30pm-2pm

At Riverside Family Hub

Contact:
Keerayprsupersencic@gmail.com

Lichfield Cathedral at Christmas

Lichfield Cathedral, Lichfield

Relaxed Sessions

Dedicated sessions for anyone who would benefit from a more relaxed and supportive experience, **with limited numbers and quieter volumes.**

These are outdoor-only sessions.

Please ensure you have read the relaxed session FAQs which include our Terms and Conditions ahead of booking:

Dates: Monday 15th - Wednesday 17th
December

Times: From 5.15pm

Cost: Cost: Tickets from £8pp,
family tickets from £35, Under 2's go free

Website: <https://www.lichfield-cathedral.org/what-s-on/lightshow>



The Core

Theatre Square, Touchwood, Solihull, B91 3RG

Aladdin - Pantomime (RELAXED PERFORMANCE)

Panto returns to the Core Theatre with a special showing for audiences who may benefit from a more relaxed performance.

Age: 3 years upwards

Dates: Tuesday 30th December

Times: Various see website for details.

Cost: Ticket prices: £24 to £28 (concessions available on some performances - see colour-coded guide). Children under 18 months may sit on laps free of charge.

Email: thecoretheatre@solihull.gov.uk

Website: <https://www.thecoretheatresolihull.co.uk/whats-on/all-shows/santas-christmas-party/27532>



SEND

Castle Bromwich Historic Gardens

Chester Road, Castle Bromwich. B36 9BT



Castle Bromwich
Hall Gardens

Days Out

Singing Santa

Santa is feeling very jolly this Christmas and is in the mood to sing some happy songs.

Come to the Gardens to meet and singalong with Santa this December.

In each 50-minute session, Santa will entertain the children (and their grown-ups!) with a great session of songs with lots of child friendly interactions and getting into the Christmas spirit.

At the end of the session, each child will receive a present from Santa and have a chance to have a picture taken with him.



The sessions take place in the warm and cosy tent in the Melon Ground near the entrance to the Gardens. There are seating and heating.

Each ticket also gives you access to the *whole of the Gardens for all day*.

So, as well as your Santa Singalong Session, you can spend time exploring the Gardens, and return to the courtyard for warming hot chocolate, drinks, soup, cake and snacks and a bit more shopping.

Age: 2 to 9 years (other ages are welcome).
Date: Saturday 7th and 13th December 2025.
Times: 2 slots each day - 11.30am and 1.30pm
Cost: Child ticket £7 including present, accompanying adult £6.
Website: <https://www.castlebromwichhallgardens.org.uk/events-calendar/>

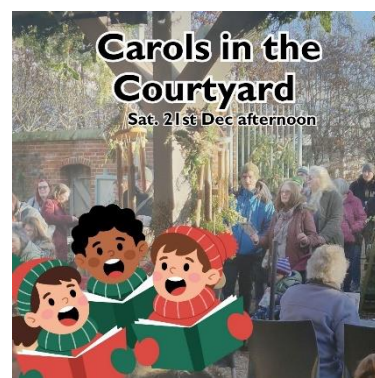
Carols in the courtyard

Everyone is invited to our last open afternoon of the year – boost your happy hormones! We loved our scratch choir community singing in the Courtyard so much last year, we're determined to do it again.

For a short while, just forget about all that 'arranging' for the holidays and come along to boost your mood by singing along with everyone. whatever your voice!

The cafe will be open for warming drinks, hot chocolate, mulled mead and wine and there'll be snacks too.

Age: All ages welcome
Date: Sunday 21st December 2025.
Times: 12.30pm – 3pm
Cost: No need to book. Free.
Website: <https://www.castlebromwichhallgardens.org.uk/events-calendar/>



Warwick Castle

Warwick, Warwickshire CV34 6AH



Days Out

Christmas at the Castle

Start a new tradition this year at Warwick Castle this Christmas.

Experience the magic with Santa and Mrs. Claus during our delightful Stories with Santa experience. Begin your journey by joining Santa's cheery elves for some fun and festive magic. Then join Santa & Mrs. Claus eagerly waiting to share a magical Storytime with you. Each child will receive a special Christmas gift and there's even a surprise for the grown-ups. Whether it's your first time or a cherished family tradition, experience the magic of Stories with Santa this Christmas at Warwick Castle.



Join us for a magical pantomime adventure in the enchanting Woodland Theatre! Starring the legendary Guy of Warwick and the beautiful Princess Felice, this fun-filled show is perfect for all the family. Expect laughter, lively singing, and dazzling dancing as our hero's battle villains, bringing timeless tales to life.

Additionally, Make this Christmas truly unforgettable with a Santa Sleepover at Warwick Castle, available on

selected winter dates in 2025.

Settle in for a cosy overnight stay in Warwick Castle Accommodation, filled with festive touches and family evening entertainment.

Open-air Ice Rink

The Castle's east front transforms into a magical skating rink for the ultimate festive experience on the ice. Glide around our ice rink right underneath the majestic Guy's Tower. As you skate, enjoy the sound of your favourite Christmas classics.



Age: All ages
Dates: up to Sunday 4th January
Cost: See website for details

Email: customer.information@warwick-castle.com

Website: <https://www.warwick-castle.com/explore-1/events/christmas-at-the-castle/>

Stratford Town Walk

Stratford upon Avon

Stratford Ghost Walk



Award-winning evening Ghost Walk to uncover the darker side of Stratford's history. Accompany your costumed guide around the 'haunted' streets to discover the ancient creaky buildings seeping with sinister stories of ghosts, witches, murder and misery. The guide is a professional entertainer and delivers the tour in their own unique style.

Dates: Saturday 6th, 13th, 20th and 27th December 2025.

Times: 7.30pm

Cost: £10 per adult, £5 per child (8 to 15 years).

Not suitable for under 8s

Days Out

Stratford Town Walk – Christmas Day

Join the award-winning Stratford Town Walk for a fun guided walk for the whole family - 'fur babies' too! Join a local professional guide and enjoy fresh air, exercise and good company. Discover Stratford's history & fascinating relationship with William Shakespeare. Hear stories of Stratford's history through fire, flood & plague, with old fashioned sayings, medieval medical cures and amusing anecdotes.

Location: Swan Fountain on Waterside, near the RST and opposite Sheep Street

Date: 25th December 2025
Age: All ages
Times: 10.30am (walk start time). Duration 1.5 hours to 2 hours
Cost: £10 per adult
£5 per child (8 to 15 years)
Under 8 years free!



Please note: for both Stratford Town Walks the fee includes exclusive discounts at selected shops, restaurants, pubs, coffee shops and attractions.

Contact: Pre-book your tickets online or phone 07855 760377
Email: stratfordtownwalk@btinternet.com
Website: www.stratfordtownwalk.co.uk

Knowle and Dorridge Lions Club

Dorridge Village Hall



2025 Lions Festive Walk

Knowle and Dorridge Lions are inviting one and all to join them for their Lions Festive Walk on December 27th 2025.



The annual event will start at Dorridge Village Hall and there will be a choice of a three- or six-mile sign-posted route.

All will pass through the surrounding countryside using country lanes and public footpaths.

Young walkers will be able to join the Lions Safari Hunt on the three-mile walk, with a prize awarded for a correct entry.

Download an entry form here: <https://www.knowleanddorridgelions.com/festive-walk>
Safari entries will be taken by a simple email list if this is easier.

Walkers can register and begin their routes from 9:30 am until 1pm. In the event you cannot download them, you will be able to collect forms and maps from the Lions gazebo in front of Dorridge Village Hall.

Dogs are welcome if kept on a lead and we request that all mess is disposed of carefully. There are one or two stiles where dogs may need to be lifted.

There will be limited parking at the Dorridge Village Hall, Ye Olde Knowle Bowling Club and Dorridge Cricket Club but we would ask people to walk to the event where possible.

Age: All ages
Date: Friday 27th December 2025
Times: 9.30am through to 1pm
Contact: Please visit our website or email for further information.
Email: kanddlions@gmail.com
Website: www.knowleanddorridgelions.com



Days Out

Touchwood
Solihull B91 3GJ

Visit Santa this Christmas at Touchwood

Santa is back in residence this year at his enchanted Christmas grotto. He's eagerly waiting to receive wish lists and will even have an early gift for your little ones.

Santa is back in residence this year at his enhanced Christmas Grotto, every day from Saturday 22nd November until Christmas Eve. Eagerly waiting to receive wish lists, and with a sack full of gifts for the little ones, Santa is on hand to bring the festive cheer with parents able to treasure the moment with a photo!

The Grotto is located on Jubilee Walk. Book your ticket online so the elves can reserve your space. A gift is included for each booked ticket within the entry price when visiting Santa.



Cost: £7 per child

Website: www.christmasattouchwood.co.uk/christmas

The Grinch is back

On Saturday 13th and Sunday 14th December the mischievous Grinch will be back at Touchwood once again and is taking over the whole of Touchwood.....get ready as you never know where he will pop up!

Please note this is a free event, and does not require booking. The Grinch will be roaming around Touchwood, and will not be taking over the grotto.



Umberslade Adventure

Chalcot Wood, Cut Throat Ln, Hockley Heath, Solihull B94 6SE

Father Christmas & his Reindeer Woodland Grotto

We are bringing the festive spirit to Umberslade Adventure and our ancient woodland this Christmas with a brand-new experience.

Your journey starts at reception where you will check-in and then follow the fairy light trail up to Deer Wood Lodge and the home of our special Christmas Grotto housing our VIP guest. On the way meet with our new herd of reindeer, our ponies and Ryland



sheep. Animal feed will be available to purchase at reception. Carry-on walking up to Deer Wood Lodge, which will be open with a toasty log burning fire and serving hot drinks and food to include mulled wine and cider.

Play on the Adventure Playgrounds and take a woodland walk around the nature trail and finish with a sweet or Savory pancake at Bluebells Lodge or buy a marshmallow on a stick for £1.50 to toast over the open fire pit.

Your booking is time specific for your group to meet with Father Christmas in his Grotto beside Deer Wood Lodge. The maximum number of tickets per booking time is 8 persons, whilst your Grotto visit is time specific you can stay and play in the park for as long as you want, so either arrive early or stay after you have met with Father Christmas. **IMPORTANT:** Please ensure you arrive in the park at least 20 minutes before your time slot. If you are late and miss your slot unfortunately, we cannot guarantee that you will be able to re-schedule, and no refunds will be given.

You will then be invited into your personal meet & greet with Father Christmas at your booked time and each child ticket will receive a present from Father Christmas himself. Please note that adult tickets and babies in arms tickets don't include a gift from Father Christmas. This event is suitable for everyone who believes in the magic of Christmas. This is a ticket only event and all adults & children require a valid ticket booking is essential.

Dates: 6th, 7th, 13th, 14th, 20th and 21st December 2025

Times: 10am until 4pm.

Website: <https://umbersladeadventure.digitickets.co.uk/event-tickets/45090?catID=44773&>

Days Out

Kenilworth Castle and Elizabethan Garden

Castle Green, Off Castle Rd, Kenilworth, Warwickshire CV8 1NE



ENGLISH HERITAGE

Days Out

Father Christmas at Kenilworth

Join Father Christmas at Kenilworth Castle this winter for a magical way to start the festive season.

Father Christmas is taking time out of his busy festive schedule to tell some of his favourite seasonal stories around the Christmas tree.



After the group storytelling session, you and your children will meet the man himself, with the chance to take photographs and make memories to treasure. Father Christmas will also give every child a traditional present to unwrap.

Children of all ages are welcome. Tickets for Father Christmas cost £9.50 per child in advance, for members and non-members, and can be added at the checkout. Non-members will also need to purchase a ticket for the castle itself.

Join us at Kenilworth Castle and Elizabethan Garden for a festive day out the whole family will love. Make Magical memories as you explore the castle and enjoy festive activities. Soak up the sights, sounds, and scents of Christmas past and present.

As you wander through the grounds, keep your eyes peeled for our Christmas Wreath Trail created by the local community. Take part in family-friendly festive crafts in the Stables before enjoying the comforting crackle of the fire pit – perfect for toasting marshmallows.

Each weekend we'll be joined by different groups of choirs and bands to set the scene:

Saturday 6th December - Uni of Warwick Acapella Society,

Sunday 7th December - Warwickshire Singers,

Saturday 13th December - Sounds of Time,

Sunday 14th December - Priors Field Primary School,

Saturday 20th December - Sounds of Time and

Sunday 21st December - Bilton Silver Band.



Please see website for more information and to book.

Website: <https://www.english-heritage.org.uk/visit/whats-on/family-events/>

Festive fun awaits as Santa Safari returns

West Midlands Safari Park is set to sprinkle a little extra magic this Christmas, with the return of its much-loved Santa Safari event and some new festive features.

On selected dates from until Christmas Eve, families can combine a winter visit to the safari along with meeting Santa in his magical grotto.



New for this year, Mrs Claus will be setting up residency at the Park and has her own special show - Storytime with Mrs Claus, where she will read an enchanting Christmas tale to families from her cosy cabin.

Also, brand-new this year is the Park's very first Christmas Pantomime. For four days only, from 20th –23rd December, Treetops Pavilion will host a fabulous production of Aladdin.

Packed with sing-along songs, laugh-out-loud comedy and a few unexpected surprises, it's the perfect way to round off a magical festive day.

Rochelle Zare, Head of Marketing, said, "*Santa Safari is, without a doubt, my favourite time of year. Watching families create magical memories after our team has spent months planning and perfecting every detail is incredibly rewarding. This year's Santa Safari is set to be our most enchanting yet. From festive adventures through the Park to unforgettable moments with Santa himself, plus some exciting new features, we can't wait to welcome families back to celebrate the season with us.*"



"Our elves have been hard at work, transforming our Discovery Trail into a winter wonderland. We have hundreds of trees, beautiful snow-covered scenes and new lighting displays that will add an extra touch of sparkle - especially for those visiting Santa a little later in the day. We hope everyone has a magical time this festive season."

With an allocated time to see Santa, guests will be greeted in the Discovery Trail by one of his helpful Elves, directing them to the North Pole seeing delightful characters and being dazzled by the Northern Lights on the way.

A highlight for many will be the return of Santa's Enchanted Elevator, an immersive ride that whisks families up through the skies and to Santa's front door, where little ones can then enter, to meet the man in red himself.

Once guests exit the enchanted elevator, they will be able to meet the big man himself, where they can tell him what's on the top of their wish list and a friendly elf will take a picture of the experience for the family to take home.

After meeting Santa, children can pick their own present in the Elves' Workshop and collect their photo. With a wide selection of gifts to choose from, children will be spoiled for choice.

Guests can then head to one of the festive food outlets, to pick up their complimentary festive treats, which include a freshly baked cookie and a drink.

Children can take part in some Christmas crafts at Mrs Claus' Craft Club, where they can make some reindeer food, do some Christmas colouring and take part in a competition by writing a letter to Santa, to be in with the chance of winning a Gold Annual Pass for four people.

Also included is the four-mile Safari Drive, Safari Walk areas, Explorers' Play Park and all the animal talks and encounters.

Further information and prices can be found on the Park's website.

Age: All ages
 Dates: Saturday 22nd November to Sunday 24th December 2025 (Santa Safari).
 Times: Please see website for details
 Cost: Tickets can be booked in advance via the Park's website, where guests can also see the calendar of events
 Email: info@wmssp.co.uk
 Website: <https://www.wmssp.co.uk>

Lichfield Cathedral at Christmas

Lichfield Cathedral, Lichfield

Website: <https://www.lichfield-cathedral.org/what-s-on/whats-on-home>

Christmas Tree Festival

Come and see a wonderful festive array of real Christmas trees decorated by local businesses, schools and charities. New for 2025, you'll also find a stunning selection of wreaths created by local schools, charities, and businesses, proudly displayed on the Fenland Black Oak table - a showcase of our community's creativity!

Dates: 4th December 2025 to 4th January 2026.
 (open during visiting opening hours)
 Cost: Free entry, donations welcomed.



Carols Around the Tree



Enjoy a short time of joy and celebration with some popular readings and Christmas Carols, featuring a live brass band.

Date: Saturday 20th December
Times: 2pm and 3pm
Cost: Free service, donations welcomed.

Family Crib Service



The ever-popular Crib Service at Lichfield Cathedral is the perfect family Christmas service. Go dressed as a character from the story of the Nativity and take part in the fun re-telling of the Christmas story.

Date: Wednesday 24th December
Times: 13:30pm & 3pm
Cost: Free entry, donations welcomed.

Christmas Light Show

Head to Lichfield Cathedral for a spectacular light show around the Close and on the famous West Front. New for 2025: The Robin's Reward – enjoy spectacular projections and beautiful lights around The Close and on the iconic West Front of the Cathedral. Enjoy popular carols and take a moment inside to reflect and celebrate this special time of year. Relaxed sessions are also available for those who would benefit from a more relaxed and supportive experience, with limited numbers and quieter volumes.

Dates: Monday 15th – Sunday 21st December 2025
Times: From 5.30pm
Cost: Tickets from £8 each, family tickets from £35, Under 2's go free.



We usually advise visitors to allow around an hour for the full experience.



Christmas at Baddesley Clinton



Enjoy the build-up to the festive season at Baddesley Clinton. Reflect on Christmas memories and traditions, enjoy the decorations and explore the great outdoors. At Baddesley this Christmas, from **29th November 2025 – 4th January 2026**, there is great excitement as a long-awaited white Christmas is anticipated.

The kitchen is all abustle with the preparation of festive food, the log fire in the Great Hall is burning to keep the chill at bay and the children are dreaming of the snowmen they might build and the fun of snowball fights ahead. Free for members, normal admission applies.

The Snowman™ Sculpture Trail at Baddesley Clinton



Come and spot twelve giant The Snowman™ sculptures around the gardens at Baddesley Clinton this winter from **12th November 2025 to 11th January 2026**, presented by Wild in Art.

Pick up a trail map from Visitor Reception and see if you can find all of the decorated sculptures around the gardens. The Snowman™ sculptures have been painted by national and international artists, showcasing designs inspired by the carol, The Twelve Days of Christmas. Free for members, normal admission applies.

Age: All ages

Times/Cost: Please see website

Website: www.nationaltrust.org.uk/visit/warwickshire/baddesley-clinton

Packwood House

Packwood Lane, Lapworth, Warwickshire B94 6AT

Christmas at Packwood

Celebrate the festive season at Packwood and step into the warmth of this much-loved Tudor manor, where the rooms are dressed for the season with sparkling trees, twinkling lights and beautiful handmade decorations. We invite you to join Baron Ash on his grand adventure, when aged just 21, he travelled to 11 different countries. This Christmas we



invite you to enjoy beautifully decorated rooms which reflect the memories of his travels and the countries he visited. Free for members, normal admission applies.

Age: All ages

Dates: 29th November 2025 – 4th January 2026

Times/Cost Please see website

Contact: 01564 787981

Website: www.nationaltrust.org.uk/visit/warwickshire/packwood-house

CENTRAL BID
BIRMINGHAM

Brum's Christmas Reindeer Trail

Birmingham City Centre

Join us for a magical reindeer trail across Birmingham city centre!

Birmingham's lovable reindeer sculptures are back in the city centre for Christmas 2025 – and four have a whole new look.

Rudolph, Dasher, Dancer, Prancer, Vixen, Comet, Cupid, Donner and Blitzen were revealed across Birmingham city from Friday, November 14th for Central BID Birmingham's new festive attraction, Brum's Christmas Reindeer Trail.

After its popularity last year, the trail returns and once again helps raise money and awareness for Birmingham Children's Hospital Charity.

Families and other visitors to Birmingham can follow Brum's Christmas Reindeer Trail, created with art trail experts Wild In Art, until Tuesday January 6.

Four of the reindeer have been refreshed with new designs. There is now even a Roy Wood, *I Wish It Could Be Christmas Every Day* theme, along with a reindeer decorated with Christmas trees, another featuring a snowman with twinkling lights and a cheeky faced reindeer bursting from gift wrap.



The picture-perfect sculptures – ideal for festive selfies – are spread out across the city centre including at Mailbox, Frankfurt Christmas Market, Great Western Arcade and inside the world's biggest Primark in High Street.

Like last year, the reindeer trail includes a hunt to solve the hidden word.



Days Out

- ❄ 9 Colourful Reindeer sculptures across central Birmingham.
- ❄ All decorated by local and national professional artists.
- ❄ Trail to support Birmingham Children's Hospital Charity.

Dates: From now until Monday 6th January 2025

Website: <https://www.centralbid.co.uk/brums-christmas-reindeer-trail-returns-to-birmingham-city-centre-for-2025-download-map-here/>

Birmingham Botanical Gardens

Westbourne Road, Edgbaston, Birmingham B15 3TR

THE BIRMINGHAM
**BOTANICAL
GARDENS**
AN EDUCATIONAL CHARITY

Luminate Winter Light Trail -Birmingham

Luminate is returning to the gardens for this festive season, ready to dazzle and delight all over again.

This year's trail will cast a new glow on the Garden's Grade II listed landscape, celebrating nature and creativity in every twist and turn. Immerse yourself in our mesmerizing almost mile long trail, with stunning lighting elements and fabulous light play, all set to music. Wander at your own pace, taking in scenes of gentle glows, twinkling lights and magical displays.

A timeless experience to be enjoyed by all, young and old alike -male memories that will last a lifetime!

There will be food traders selling:

- Tasty treats
- Festive drinks
- Hot and cold beverages
- Don't forget to save some room to toast marshmallows in the Gardens!

This trail is outside, so please dress for the weather!

The route is accessible via wheelchair, and disabled toilets accessible on site.

Car parking is available at the Gardens on a first-come-first served basis. Limited blue badge parking is also available.

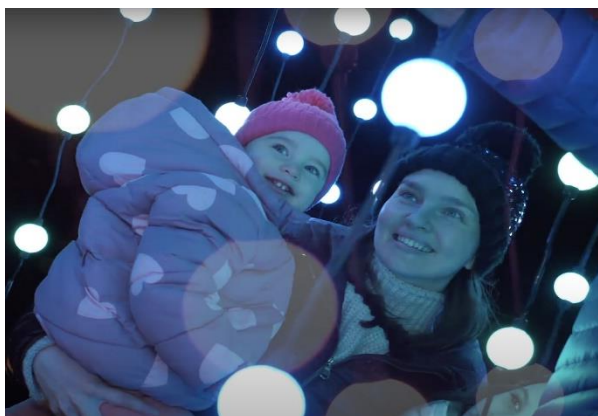
Tickets must be pre-booked online in advance!

Dates: From now until 1st January 2026

Times: 4.00pm to 10:30pm

Cost: Please see website

Website: <https://luminate.live/birmingham-botanical-gardens>



Days Out

Frankfurt Christmas Market Birmingham

Birmingham City Centre

Birmingham's Frankfurt Christmas Market is a firm fixture in the city's annual calendar and a massive favourite with both residents and visitors to the city from across the UK and Europe. Birmingham comes alive every winter with the arrival of the Market, a clear sign that Christmas is just around the corner. The stalls on Victoria Square and along New Street offer something for everyone.

The largest authentic German Christmas market outside of Germany or Austria Birmingham's Frankfurt Christmas Market offers a large range of traditional good and gifts and a selection of tempting food and drink.

A great place to meet up with family and friends and enjoy the live music programme on Victoria Square. And whilst you're here why not pick up some presents for your family and friends with everything from handcrafted wooden decorations and delicate glass baubles to in the form of the ever-favourite crystal lamps, Sounds of Nature, toys, jewellery and much more besides!



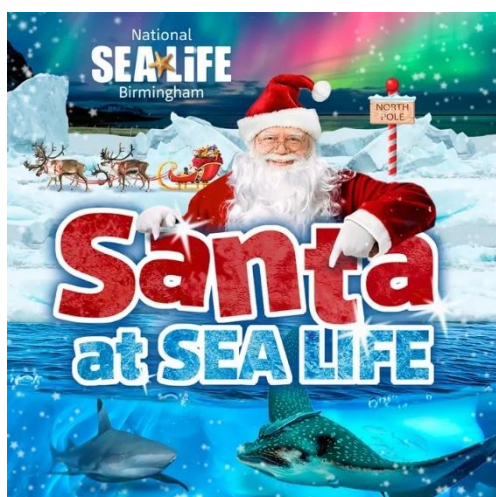
Dates: Open daily until Wednesday 24th December
Times: Monday to Thursday (11am to 9pm)
Friday (11am to 9.30pm)
Saturday (10am to 9.30pm)
Sunday (10am to 9pm)

Website: <https://thebfc.co.uk/>

National SEA LIFE Centre Birmingham

The Water's Edge, Eleven Brindley Place, Birmingham B1 2HL

Santa's Grotto Experience



Daily until the 24th of December, sea explorers will be able to marvel at over 2,000 amazing creatures including jaw-some sharks, cheeky gentoo penguins and the UK's first and only sea otters, Ozzy and Ola before entering our glittering grotto where Santa and his cheeky elves will be waiting in their magical winter wonderland to say hello and find out what's on the top of those Christmas lists this year!

Every child who visits Santa in his grotto will be given a present to take home and enjoy!

Tickets to see Santa is an additional charge, please see website for further details.

Cost: Please see website

Dates: Open daily until the 24th December 2026

Website: www.visitsealife.com/birmingham

The Snowdome

Leisure Island, River Drive, Tamworth, B79 7ND

Santa's Winter Wonderland at the Snowdome

Discover the magic of real snow this Christmas at Santa's Winter Wonderland at the Snowdome – including 4 festive experiences!



Enjoy a magical retelling of Beauty and the Beast – with a snowy twist! The frosty Beast is a loveable Yeti... bringing fun, laughter and festive sparkle, along with the main man in red, Santa! A heart-warming highlight of your adventure.

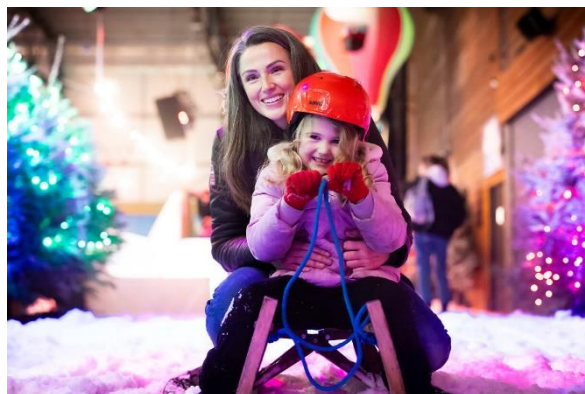
Meet adorable alpacas and furry friends, spin around on the classic carousel and go head-to-head in the family game zone. Pop by Santa's house and soak up the warm festive atmosphere, all included in your ticket!



Age: All ages
Dates: From now up until Sunday 5th January 2026
Times/Cost: Please see website
Contact: 03448 000011 Guest Services & Bookings
Email: guestservices@snowdome.co.uk Guest Services & General Enquiries
Website: <https://www.snowdome.co.uk/santa-s-winter-wonderland/>

Open now until the 3rd of January 2026, enjoy a festive extravaganza with real snow.

Experience the UK's only guaranteed snowfall this Christmas! As snowflakes fall around you, families can play, sledge and slide through a magical snowy landscape- whatever the weather outside.



Step into the brand new SledEX post room, where every child join's Santa's post team! Meet Red, the jolly postman, write your letter to Santa and choose a magical post-box. It's heartwarming, hands-on festive fun... the perfect finale to your experience.

Days Out

Coventry Transport Museum

Millennium Place, Hales Street, Coventry CV1 1JD

Vintage Sleigh Ride Experience

Meet Santa, ride his sleigh and make family memories to cherish!

Wander through a magical winter wonderland and snowy scenes before taking a ride on Coventry famous and enchanting vintage sleigh, pulled by two trusty reindeer. Your next stop? Lapland. Write your Christmas wish list, meet Santa in his festive grotto, tell him your Christmas wishes and collect your bespoke gift from a North pole elf.

What to Expect This Year:

- Vintage Sleigh Ride
- Meet Santa
- Free admission to the museum for the day
- Ticket holders will get to visit our Santa's Toy Shop and choose a toy(excluding babes in arms without a separate ticket and accompanying adults)

Dates: Friday 29th November – Monday 23rd December

Times: 9:00am – 4:30pm (timeslots every 30 minutes).

Cost: From £16 depending on the date of the session

Website: <https://www.transport-museum.com/>



Herbert Art Gallery and Museum

Jordan Well, Coventry CV1 5QP

Playful hand puppets

Join us for a relaxing winter gathering and create playful hand puppets from white socks! with your family.

Escape the winter chill and join us for a cosy family crafting session! Transform simple white socks into magical hand puppets that will spark hours of imaginative play.

Let your creativity run wild as you design lovable characters - create a funny monster, a hungry caterpillar, a cheerful snowman, or any character from your imagination! Using vibrant fabric pens, colourful buttons, pipe cleaners, and delightful embellishments, you can transform these plain white socks into lively characters with personality and charm.

This relaxing drop-in workshop is perfect for families looking to spend quality time together while creating something special.

Take home your unique puppet creations and watch as they become fun friends for storytelling, puppet shows, and endless imaginative adventures! Ages: all are welcome

Dates: Tuesday 30th and Wednesday 31st December 2025

Times: 10.30am to 3.30pm (drop-in sessions)

Cost: £2.50 per child, including babies. (adults go free)

Website: <https://www.theherbert.org/whats-on/1895/winter-puppet-workshop>



Days Out



Wishing all our families a Merry
Christmas
& Happy New Year!

