

Welcome to this digital spring edition of the Independent Travel Training Newsletter. In this issue, we will give you a snapshot of the work our team have been doing this term. We said goodbye to Flossie and welcomed Fay to the team.

## 60 Seconds with... Fay Graver



### Q. When did you join the team and what does your role involve?

*I joined the team in February of this year. My role as an Independent Travel Trainer involves me teaching and supporting young people with SEND to become independent when travelling either by bus, train or on foot to their educational setting or place of work.*

### Q. How did your previous experience help you in your new role?

*A. My previous experience helped me in my new role as I can adapt the support given to meet the individual needs of the young person. I can then apply strategies to help reduce any worries or anxieties to ensure they have a positive experience.*

### Q. What's the best part of your job?

*A. Seeing the trainee gain real confidence and independence.*

### Q. What's your favourite mode of transport and why?

*A. I don't have a favourite mode of transport, but I do love to walk. I enjoy being outside, especially in the Summer, when I can take in the sights and sounds (this also helps me to keep fit!)*

### Q. Any hidden talents?

*A. No hidden talents but I did teach myself to crochet (if that counts!)*



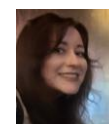
**Remember British summer time begins on Sunday the 29<sup>th</sup> of March, clocks go forward an hour: with lighter nights and the promise of warmer days but remember to be prepared for unpredictable weather!**



Our team has been busy this term visiting educational settings throughout the borough, delivering workshops on road safety, personal safety and stranger awareness to over 50 students have accessed our workshops this term! Look out for our trainers' visiting schools in the summer term to deliver workshops to Yr 6 pupils with SEN and IEPs transitioning to secondary school.



This term we have delivered Open Awards Level 2 Award in Skills for Teaching Independent Travel to colleagues working in Solihull, Lancashire, Lincolnshire and Nottinghamshire. We also delivered Guide and Passenger Assistant Training to 26 guides working with children and young people on transport assistance.



Meet Georgia, our Travel Assessments Options Officer who supports our families and carers to decide whether their child or young person would be suitable for Independent Travel Training or Transport

**Congratulations to Independent Travel Trainer Kirsty on the safe arrival of baby Willow.**

'Thanks so much for your travel session last term focusing on keeping safe whilst out and about over the dark winter months, it had a meaningful impact on our students and was packed full of sensible and practical ideas around keeping safe whilst travelling.'

Please give us feedback by scanning the QR code below.



### Quote from a school

'A huge thank you to you! He's got so much more independence now and he was so proud of himself today, showing everyone his certificate.'

## We would love to visit your school, college or event!

Do you have children or young people in your setting that are on Solihull Council provided transport to school?

Do they live in within Solihull Council Borough?

Would they benefit from Independent Travel Training?

If the answer is yes, please email us on: [travel.training@solihull.gov.uk](mailto:travel.training@solihull.gov.uk)

Or visit our website: [Solihull Independent Travel Training \(ITT\)](http://Solihull Independent Travel Training (ITT))

Watch our new videos by clicking on this link: [Independent Travel Training](http://Independent Travel Training)

