

Solihull's Climate Change Prospectus

Our vision: opportunities and fairer outcomes by acting on climate change

Purpose

Our Climate Change Prospectus (CCP) defines Solihull Council's approach to our Council Plan aim of *"Opportunities and fairer outcomes by acting on climate change"*. The CCP is the main way we communicate delivery of the Council's Climate Change Declaration. We want to get the best outcomes from taking climate action for our borough, its residents, Solihull's business and organisations and our environment.

Solihull Council is already acting on climate change across all areas of Council activity; this prospectus sets out aims for this action and our vision for a sustainable borough. We already have plans in place that have elements of climate change included in them and the CCP links them together. We have set the aim to be net zero as a borough by 2041 and in council operations by 2030 – however our action extends beyond this.



**YOUR
FUTURE
SOLIHULL**



Solihull
METROPOLITAN
BOROUGH COUNCIL

Our aims for climate action

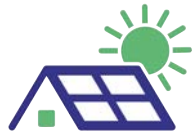
Solihull Council wants to take climate action to benefit the whole borough, to do this we have set out the following key principles that motivate us.



Unlocking the benefits of climate action

Taking action on climate change offers many benefits, like lower energy bills from using energy more efficiently and better health from cleaner air.

As a Council, we aim to make the most of these benefits for everyone in the borough.



Working towards a fairer and more sustainable Solihull

Our changing climate is likely to bring warmer, wetter winters, hotter, drier summers, and more extreme weather. Vulnerable people in our society are at higher risk from our changing climate and may face challenges accessing climate solutions.

The Council aims to ensure everyone can benefit from climate action and to protect and improve Solihull's environment through both mitigation and adaptation.



A thriving green economy

We are striving for a Solihull where economic growth is achieved without increasing carbon emissions or damaging our environment. We're already doing well, as our economy produces less carbon per pound added to the economy compared to the West Midlands and UK averages.

Solihull's green economy is growing - we want to make the most of this to benefit our borough.



An engaged borough where everyone feels empowered to take action

The Council has control over less than 1% of borough greenhouse gas emissions but can have an influence over around $\frac{3}{4}$ of emissions.

This shows how important the Council's actions are in helping us combat climate change. It also demonstrates how important it is for all our borough to be engaged and empowered to act.



Taking action ourselves

As a Council we are committed to taking action on our own operations alongside enabling others to access climate change interventions.

This can include rolling out retrofit projects, EV charging, air quality projects, active travel, protecting and enhancing our natural environment and developing important infrastructure such as the town centre heat network.

Our Vision for a Sustainable Solihull:

Opportunities and fairer outcomes by acting on climate change

To create the UK's best-connected **economy** - for business, for people, forever

Clean Air for all

An **energy** system that meets the needs of the borough and supports our climate ambitions

An enhanced well connected **natural environment**

Everyone in the borough can access decent, safe and warm housing at the point of need and has opportunities to create sustainable **homes** in thriving communities

A highly connected borough where everyone has access to sustainable **transport**

Delivering services which contribute to a cleaner, greener borough through the proactive **management of resources**

Solihull has the **resources** it needs to deliver a sustainable borough

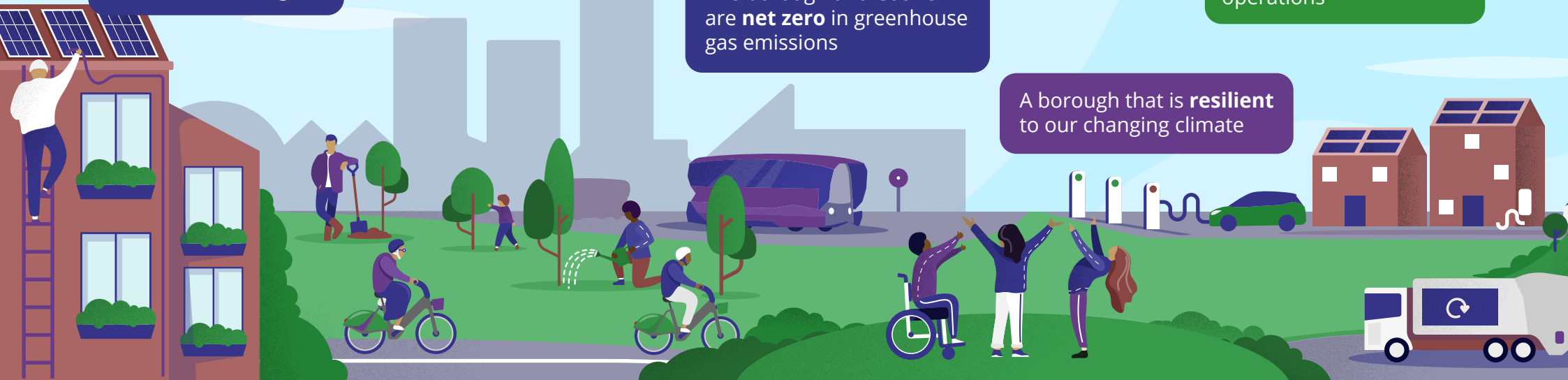
Residents and organisations across the borough are **benefitting** from climate action and know what they can do to help

The **Council** is leading by example and considers sustainability in all our operations

Planning that supports a just transition to a sustainable borough

The borough and Council are **net zero** in greenhouse gas emissions

A borough that is **resilient** to our changing climate



Climate change action: Solihull's plans

The information below sets out Solihull's plans and policies that link to climate change and sustainability action, some are specific to climate and sustainability action alone and some have elements of climate action included.

It shows the overarching documents that drive our approach such as the Solihull Council plan and Statement of Intent, the area specific plans along with Council action and the underpinning plans that support our action.

Strategic direction - where we're heading

[The Solihull Council Plan](#)

[Climate Change Emergency: Statement of Intent](#)

[Solihull's Climate Change Prospectus](#)

[Solihull Climate Change Action Plan \(formerly Net Zero Action Plan\)](#)

Plans and delivery - what we're doing

Natural environment

- [Natural Capital Investment Strategy](#)
- [Biodiversity Duty Report](#)
- [Solihull Urban Forestry Strategy](#)

Clean Air

- [Air Quality Strategy](#)

Homes

- [Solihull Housing Strategy](#)

Transport

- [Solihull Connected Transport Strategy](#)
- [Solihull Cycling & Walking Strategy & Infrastructure Plan](#)
- [Solihull's Electric Vehicle Strategy](#)

Climate change action: Solihull's plans - continued

Council operations

- [Council Carbon Plan](#)
- Directorate Sustainability Action Plans

Circular economy and waste

- [Waste Management Strategy for Solihull](#)
- [Waste & Recycling Policy](#)

Enablers – what supports us in achieving our goals

[Local Plan and Climate Change Supplementary Planning Document](#)

[Solihull Economic Strategy](#)



YOUR
FUTURE
SOLIHULL